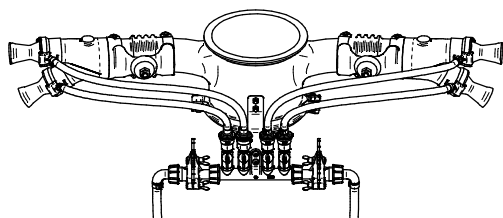


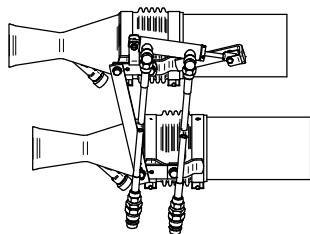
Sez. T03

Condotto dell'aria
Air duct



Sez. T03A (⌘)

Kit 2M2D

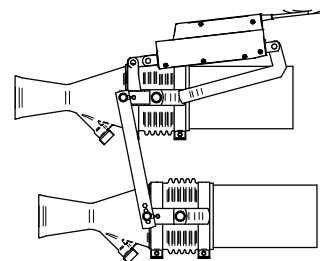


Sez. T24 (⌘)

Movimentazione Idraulica
Hydraulic Movement

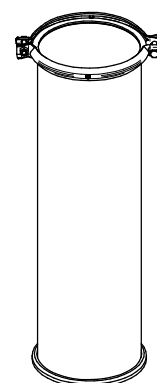
Sez. T06

Circuito idraulico
Plumbing of liquids



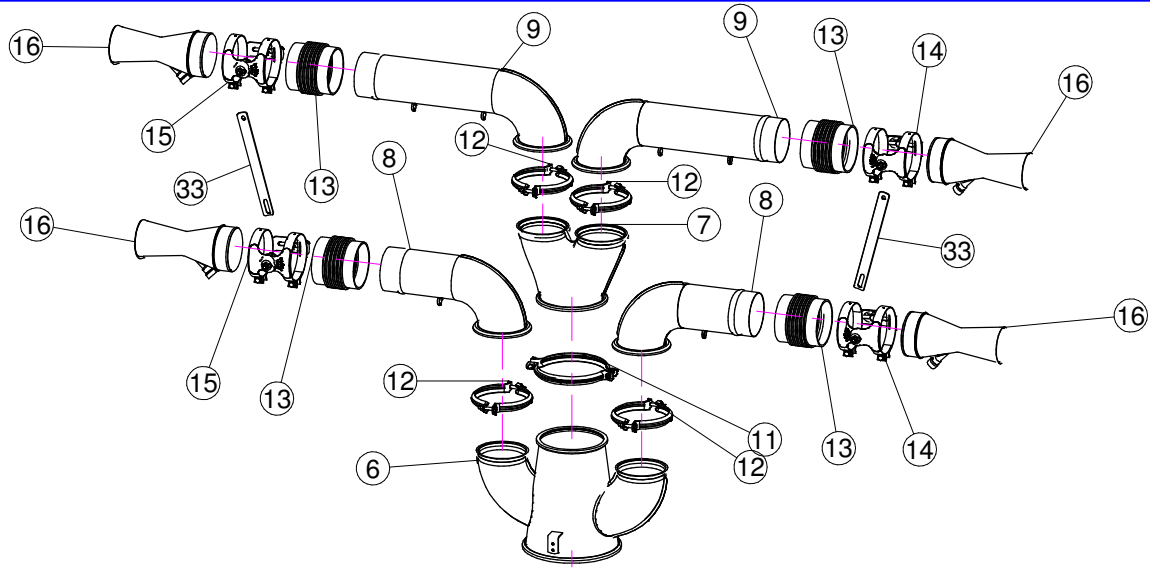
Sez. T25 (⌘)

Movimentazione Elettrica
Electrical Movement

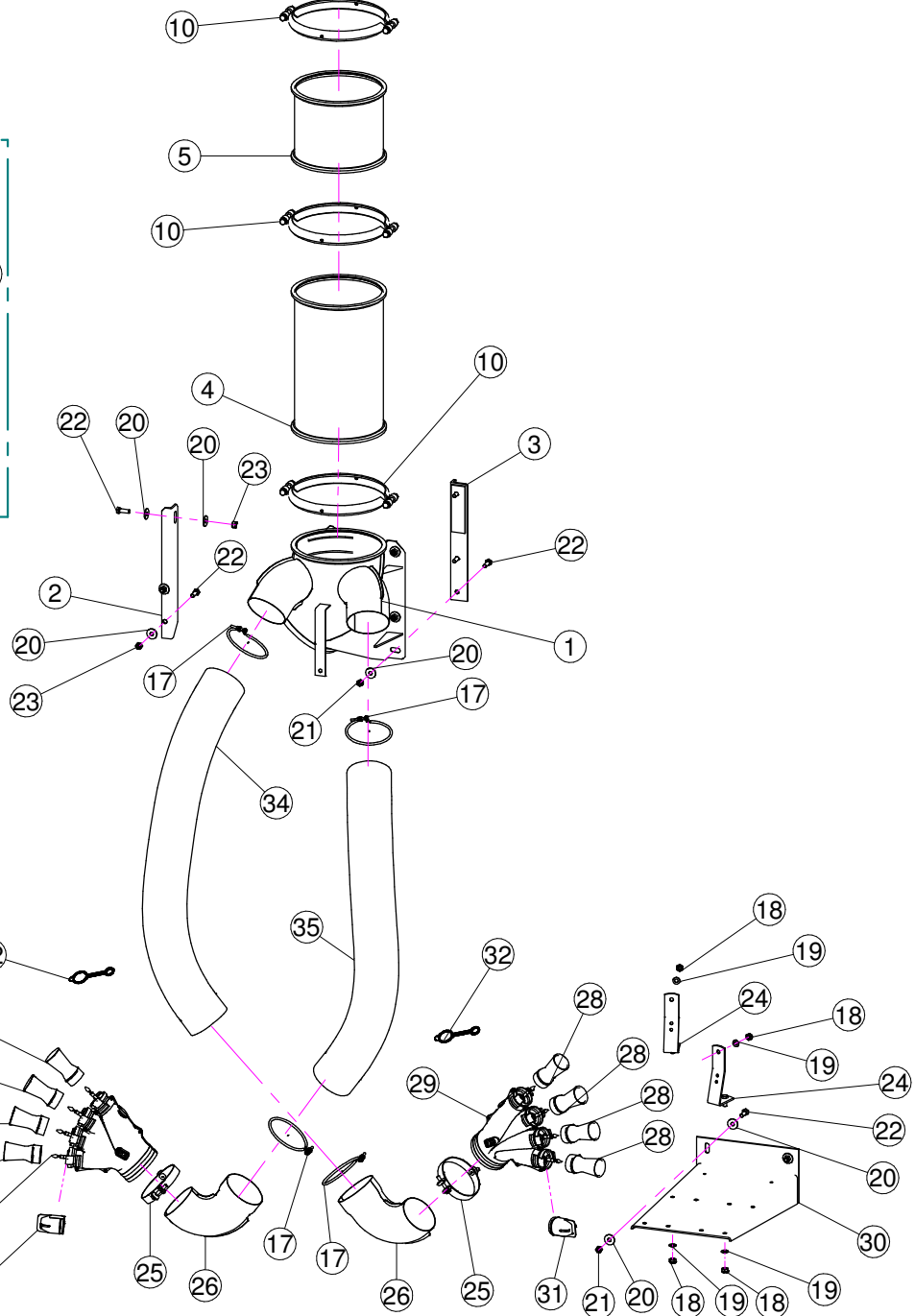
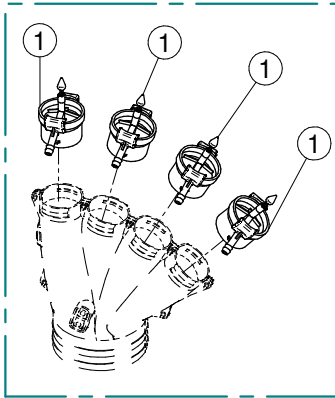


Sez. T28 (⌘)

Prolunghe
Extension



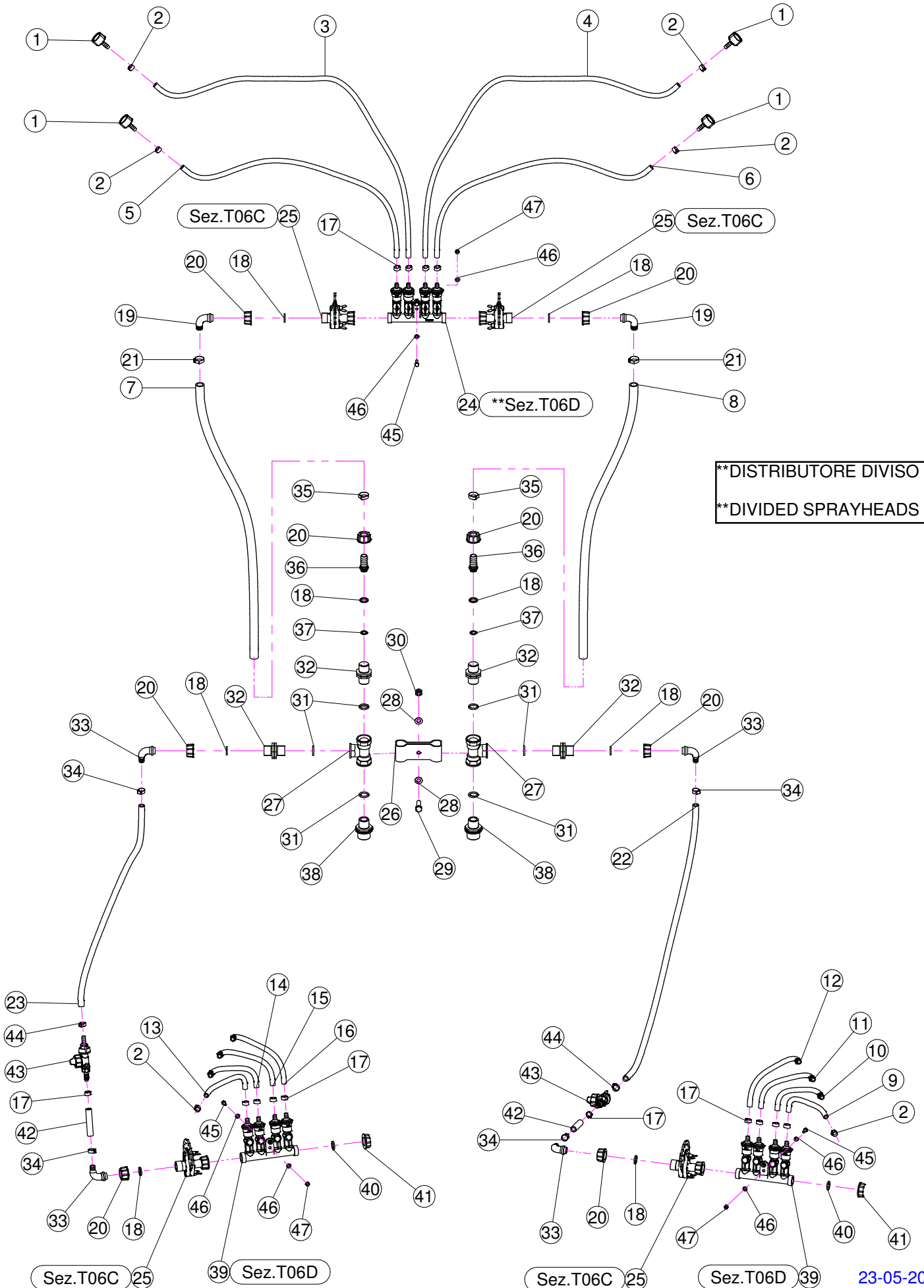
X20.014.000



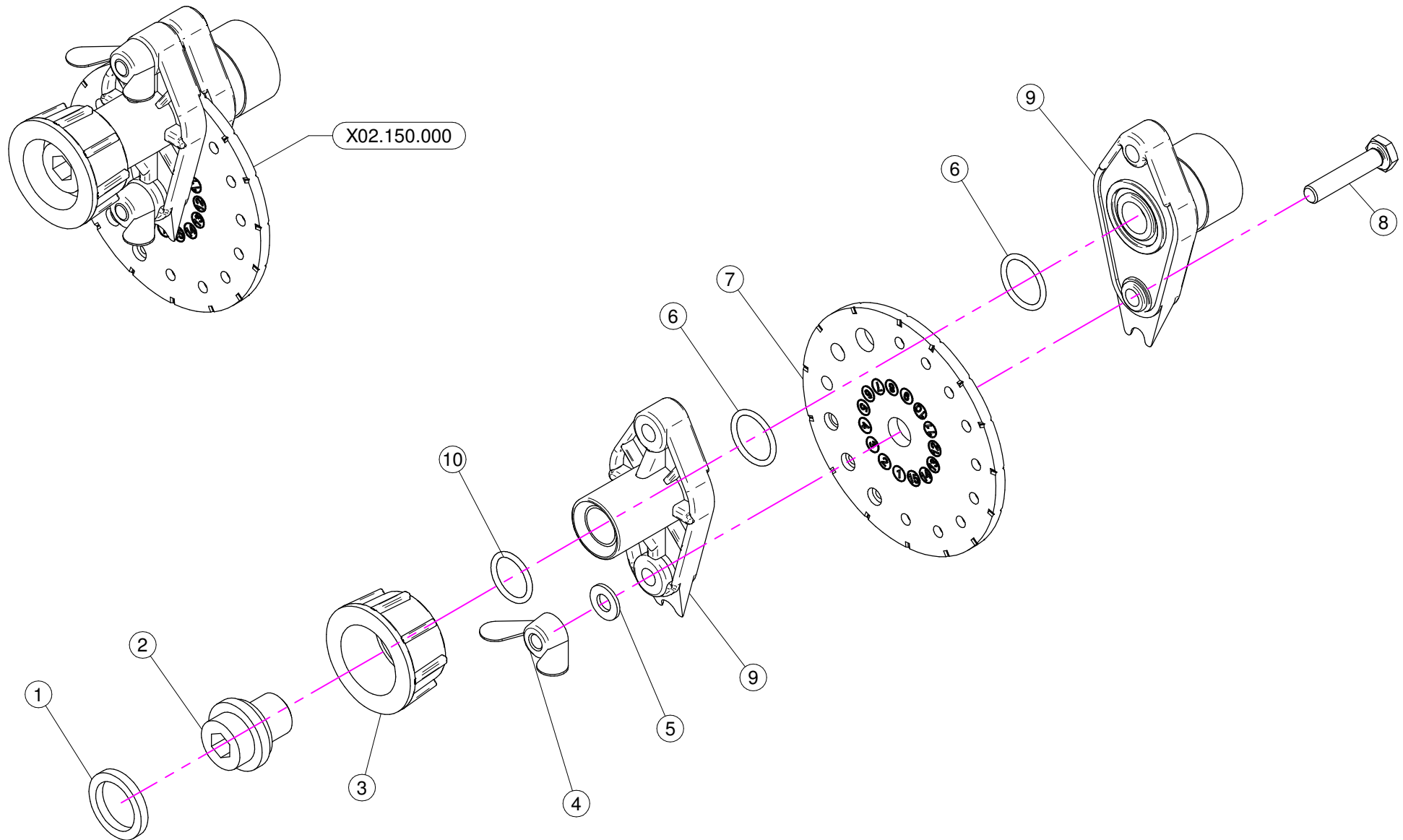
N°	Doc. Number	Titolo	Title	Q.tà
1	X50.283.001	CURVA D.250 A 45° CON CORPO A Y D.175	BODY AIR OUTLET	1
2	X05.809.051	STAFFA FISSAGGIO CURVA A 45°	45° ELBOW BRACKET	1
3	X50.331.000	STAFFA PER CURVA 45° A CROCERA	ELBOW BRACKET	1
4	X21.100.040	PROLUNGA D.250 x 400	EXTENSION D.250 x 400	1
5	X21.100.020	PROLUNGA D.250 x 200	EXTENSION D.250 x 200	1
6	X50.078.000	CORPO D.250-175 CON DUE USCITE D.130	BODY D.250-175 WITH 2 OUTLETS D.130	1
7	X20.204.000	CORPO D.175 CON 2 USCITE D.120	BODY D.175 WITH 2 OUTLETS D.120	1
8	X20.675.000	CURVA D.120 L=330 PER TC	ELBOW D.120 L=330 PER TC	2
9	X20.644.102	CURVA D.120 L=520 PER TC	ELBOW D.120 L=520 PER TC	2
10	X05.813.000	COLLARE D.275	CLAMP D.275	3
11	X05.616.000	COLLARE PER TUBI D.175	PIPE CLAMP D.175	1
12	X04.027.000	COLLARE PER TUBI D. 150	PIPE CLAMP D. 150	4
13	X02.021.000	MANICOTTO FLESSIBILE D.120	FLEXIBLE SLEEVE	4
14	X21.080.000	COPPIA FASCETTE Ø 127 DESTRA	RIGHT CLAMP Ø 127	2
15	X21.081.000	COPPIA FASCETTE Ø 127 SINISTRA	LEFT CLAMP Ø 127	2
16	X10.027.120	DIFFUSORE 27/120 CON TUBETTO	NOZZLE 27/120	4
17	XF0.120.000	FASCETTA UNIFILO D.120	CLAMP D.120	4
18	XDA.010.0BG	DADO AUTOBLOCCANTE M10	SELF LOCKING NUT M10	4
19	XRP.010.000	RONDELLA PIANA D.10	WASHER D.10	4
20	XRP.010.030	RONDELLA PIANA D.10 x 30 mm	WASHER D.10 x 30 mm	15
21	XD0.10.5587G	DADO M10	NUT M10	7
22	XTE.010.030T	VITE TE M10 x 30	SCREW TE M10 x 30	10
23	XD0.10.5587G	DADO M10	NUT M10	3
24	X20.283.100	SQUADRETTA FISSAGGIO MANI	OUTLET'S JOINT PLATE	2
25	X00.125.001	FEMMINA FASCETTA D.125 ORIENTABILE	FEMALE CLAMP D.125	2
26	X04.845.000	CURVA D.120 A 105°	ELBOW D.120 A 105°	2
27	X20.014.000SX	MANO A 4 USCITE CON TUBETTI	FOUR OUTLETS	1
28	X00.008.050	DIFFUSORE 8/50	NOZZLE 8/50	8
29	X20.014.000DX	MANO A 4 USCITE CON TUBETTI	FOUR OUTLETS	1
30	X50.282.001	STAFFA FISSAGGIO CURVE 90° SU LINK E PLUS 55	BRACKET	1
31	X02.127.000	TAPPO DI ATTACCO RAPIDO	CAP NOZZLE PLUG	2
32	X20.697.000	FERMA DIFFUSORE	NOZZLE STOP	8
33	X20.666.000	STAFFA COLLEGAMENTO DIFFUSORI	NOZZLES UNION BRACKET	2
34	X02.239.120	TUBO POLIURETANO D.120 L=1200	HOSE D.120 L=1200	1
35	X02.239.105	TUBO POLIURETANO D.120 L=1050	HOSE D.120 L=1050	1

X20.014.000

N°	Doc. Number	Titolo	Title	Q.tà
1	X20.016.01C	RACCORDO ATTACCO RAPIDO PORTA TUBETTO	PIPE WITH OLIVE	4

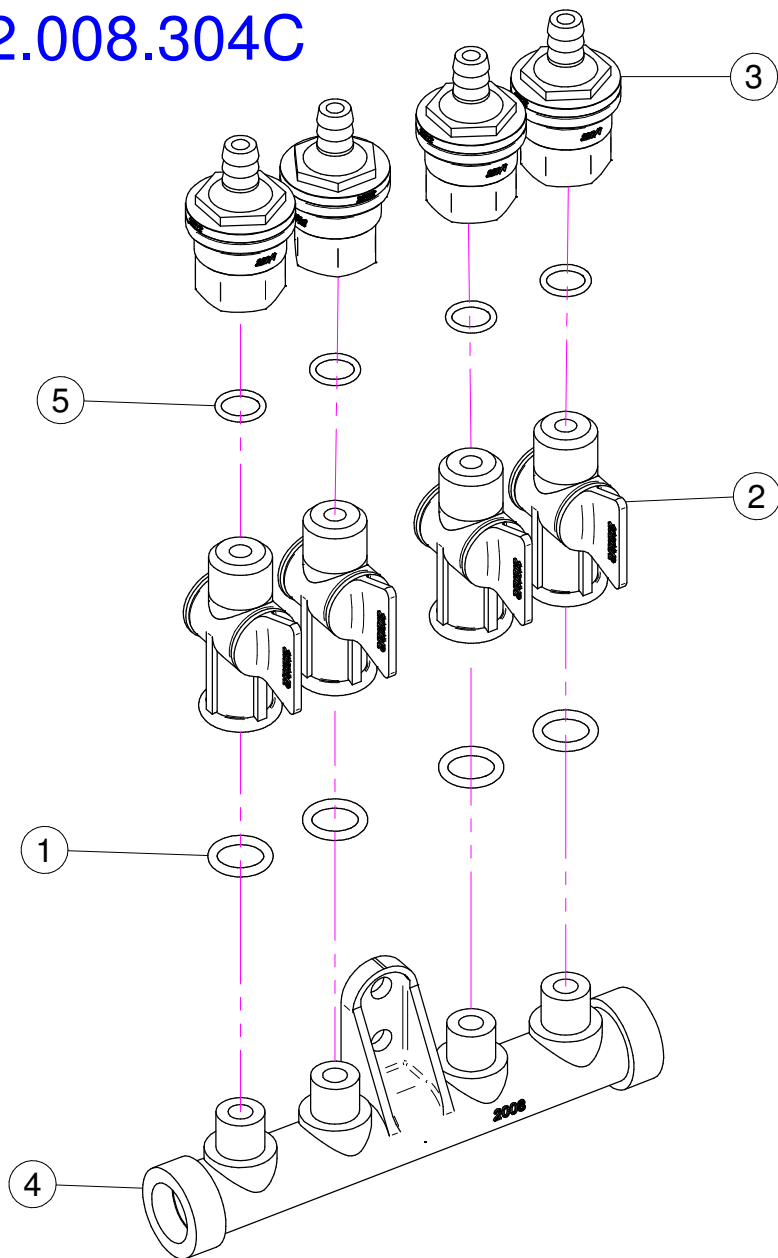


N°	Doc. Number	Titolo	Title	Q.tà
1	X21.010.000	RACCORDO P.G. DIRITTO D.10 COMPLETO	COMPLETE R.H. D.10 UNION	4
2	XFC.012,5.014	FASCETTA COBRA SLO30705	KOBRA CLAMP	12
3	X02.217.120	TUBO D.8x13 L=1000	HOSE D.8x13 L=1200	1
4	X02.217.120	TUBO D.8x13 L=1200	HOSE D.8x13 L=1200	1
5	X02.217.100	TUBO D.8x13 L=1000	HOSE D.8x13 L=1000	1
6	X02.217.100	TUBO D.8x13 L=1000	HOSE D.8x13 L=1000	1
7	X02.211.072	TUBO D.16x23 L=720	HOSE D.16x23 L=720	1
8	X02.211.072	TUBO D.16x23 L=720	HOSE D.16x23 L=720	1
9	X02.217.020	TUBO D. 8 x 13 L= 200	HOSE D. 8 x 13 L= 200	1
10	X02.217.025	TUBO D. 8 x 13 L= 250	HOSE D. 8 x 13 L= 250	1
11	X02.217.030	TUBO D. 8 x 13 L= 300	HOSE D. 8 x 13 L= 300	1
12	X02.217.035	TUBO D. 8 x 13 L= 350	HOSE D. 8 x 13 L= 350	1
13	X02.217.020	TUBO D. 8 x 13 L= 200	HOSE D. 8 x 13 L= 200	1
14	X02.217.025	TUBO D. 8 x 13 L= 250	HOSE D. 8 x 13 L= 250	1
15	X02.217.030	TUBO D. 8 x 13 L= 300	HOSE D. 8 x 13 L= 300	1
16	X02.217.035	TUBO D. 8 x 13 L= 350	HOSE D. 8 x 13 L= 350	1
17	XFC.013,5.015	FASCETTA COBRA SLO30710	KOBRA CLAMP	14
18	X02.349.000	GUARNIZIONE PIANA D.17X23X3	17X23X3 FLAT GASKET	8
19	X00.055.046	RACCORDO CURVO P.G. D.17	CURVED UNION WITH R.H. D.17	2
20	X00.055.045	GIRELLO 3/4" GAS	3/4" FLY NUT	8
21	XFC.023,5.025	FASCETTA COBRA 23,5 - 25	KOBRA CLAMP 23,5 - 25	2
22	X02.213.095	TUBO D.10x16 L=950	HOSE D.10x16 L=950	1
23	X02.213.065	TUBO D.10x16 L=650	HOSE D.10x16 L=650	1
24	X02.008.404C	DISTRIBUTORE LIQUIDI A 4 RUBINETTI	4 TAPS LIQUID MANIFOLD	1
25	X02.150.000	REGOLATORE A DISCO ROTANTE COMPLETO	ROTATION DISK REGULATION	4
26	X02.999.000	STAFFA FISSAGGIO RACCORDO A T	T UNION FIXING BRACKET	1
27	X02.396.000	RACCORDO A T 3/4" - 3/4" - 3/4" F.	UNION 3/4" - 3/4" - 3/4" F.	2
28	XRP.010.000	RONDELLA PIANA D.10	WASHER D.10	2
29	XTE.010.035T	VITE TE 10 x 35	SCREW TE 10 x 35	1
30	XDA.010.0BG	DADO AUTOBLOCCANTE M10	SELF LOCKING NUT M10	1
31	XOR.004.081	OR D.20,22 x 3,53	20,22 x 3,53 O-RING GASKET	6
32	X02.380.000	NIPPLO 3/4"	NIPPLE 3/4"	4
33	X00.055.046R	RACCORDO CURVO P.G. D.14	CURVED UNION WITH R.H. D.14	4
34	XFC.016,5.018	FASCETTA COBRA 16,5 - 18	KOBRA CLAMP 16,5 - 18	4
35	XFC.022,5.024	FASCETTA COBRA 22,5 - 24	KOBRA CLAMP 22,5 - 24	2
36	X02.002.000	RACCORDO DIRITTO 3/4" P.G.18	STRAIGHT UNION 3/4" R.H.18	2
37	XOR.000.117	OR D. 13,1x18,34x2,62	13,1x18,34x2;62 O-RING GASKET	2
38	X02.293.000	RIDUZIONE 1" M - 3/4" M	1" M - 3/4" M REDUCER NIPPLE	2
39	X02.008.304C	DISTRIBUTORE LIQUIDI A 4 RUBINETTI	4 TAPS LIQUID MANIFOLD	2
40	X02.030.010	GUARNIZIONE TAPPO DISTRIBUTORE	GASKET	2
41	X02.182.000	TAPPO 3/4" FEMMINA	FEMALE 3/4" CAP	2
42	X02.213.007	TUBO D.10x16 L=70	HOSE D.10x16 L=70	2
43	X00.226.05C	GETTO ANTIGOCCIA DIRITTO COMPLETO	COMPLETE ANTIDROP	2
44	XFC.015,5.017	FASCETTA COBRA SLO30720	KOBRA CLAMP	2
45	XTE.006.020T	VITE TE M6 x 20	SCREW TE M6 x 20	6
46	XRP.006.000	RONDELLA PIANA D. 6	WASHER D.6	12
47	XD0.06.5588G	DADO M6	NUT M6	6



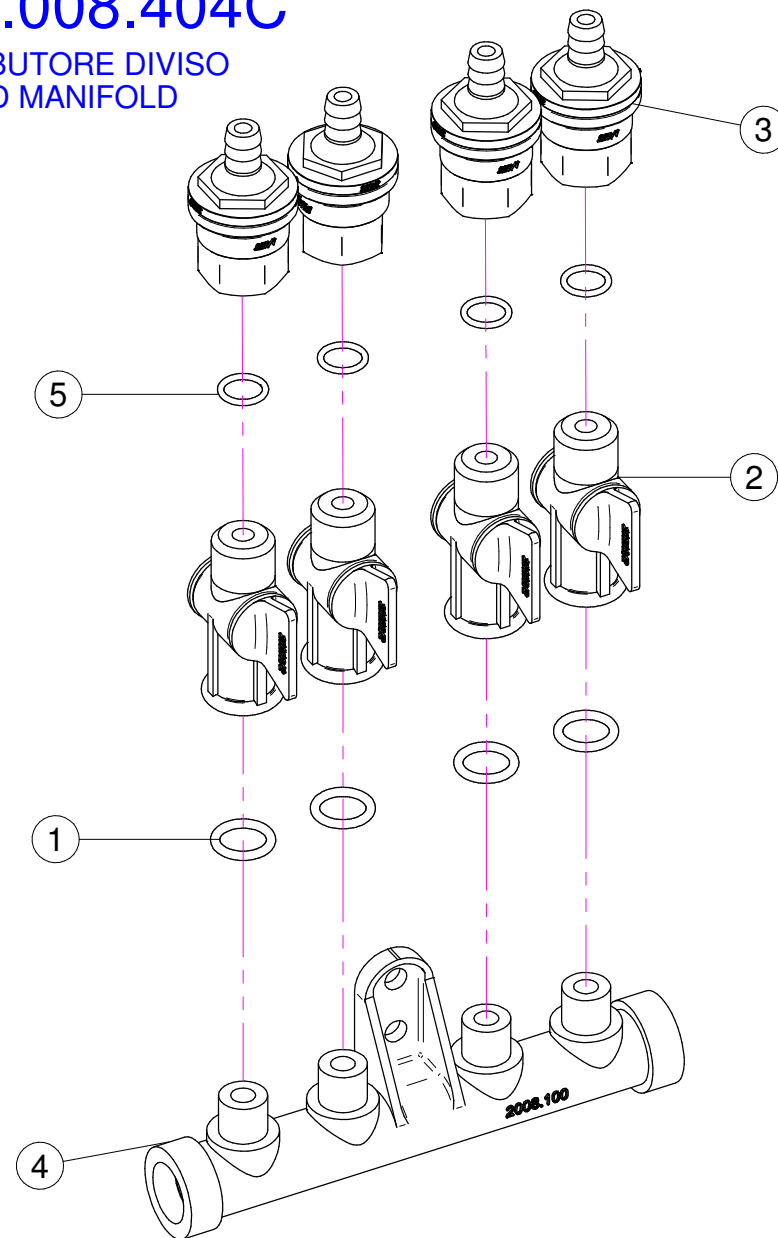
N°	Doc. Number	Titolo	Title	Q.tà	Note
1	X02.349.000	GUARNIZIONE PIANA D.17X23X3	17X23X3 FLAT GASKET	1	
2	X02.117.000	NIPPLO M14X1.5/D.17	ADAPTOR NIPPLE	1	
3	X00.055.045	GIRELLO 3/4" GAS	3/4" FLY NUT	1	
4	XDF.OTT.006	DADO AD ALETTE IN OTTONE M6	WING NUT M6	2	
5	XRP.006.000I	RONDELLA PIANA D. 6 INOX	INOX WASHER D.6	2	
6	XOR.002.062	OR D.15.6X1.78	D.15.6X1.78 OR	2	
7	X02.148.000	DISCO ROTANTE PER REGOLATORE	REGULATOR DISK	1	
8	XTE.006.030I	VITE TE M6X30 INOX	INOX M6X30 BOLT	2	
9	X02.147.500	COPPIA DI SEMICORPO REGOLATORE	REGULATOR HALF-BODY	1	
10	XOR.002.050	OR 12,43 x 1,78 NBR70	12,43 x 1,78 NBR70 O-RING GASKET	1	

X02.008.304C



X02.008.404C

DISTRIBUTORE DIVISO
DIVIDED MANIFOLD

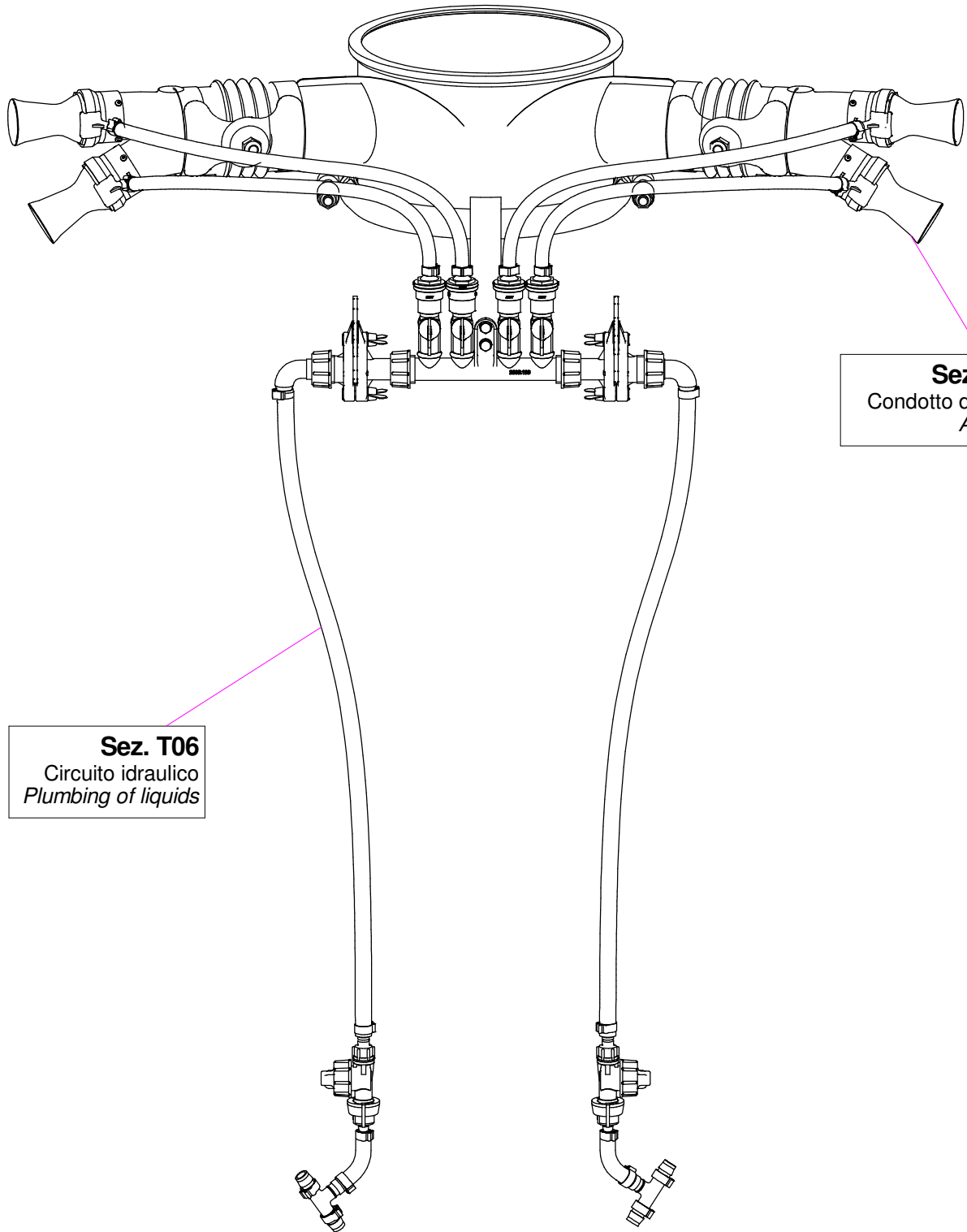


X02.008.304C

N°	Doc. Number	Titolo	Title	Q.tà	Note
1	XOR.000.117	OR D. 13,1x18,34x2,62	13,1x18,34x2;62 O-RING GASKET	4	
2	X20.202.100	RUBINETTO P.G. D.10 F.1/4" GAS TAGLIATO	TAP ASSEMBLY	4	
3	X00.227.01C	DISPOSITIVO ANTIGOCCIA	ANTDRIP VALVE	4	
4	X02.008.000	DISTRIBUTORE LIQUIDO TESTATE	SPRAYHEADS LIQUID MANIFOLD	1	
5	XOR.002.043	OR 10.82X14.38X1.78 NBR70	10.82X14.38X1.78 NBR70 O-RING GASKET	4	

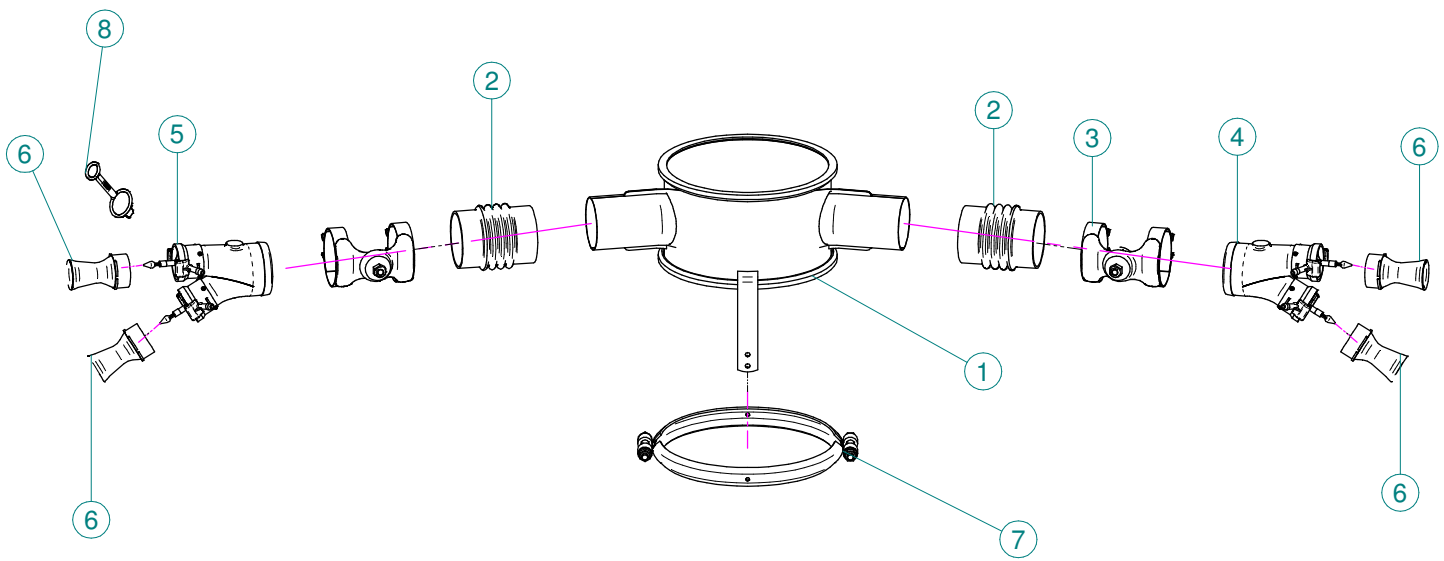
X02.008.404C

N°	Doc. Number	Titolo	Title	Q.tà	Note
1	XOR.000.117	OR D. 13,1x18,34x2,62	13,1x18,34x2;62 O-RING GASKET	4	
2	X20.202.100	RUBINETTO P.G. D.10 F.1/4" GAS TAGLIATO	TAP ASSEMBLY	4	
3	X00.227.01C	DISPOSITIVO ANTIGOCCIA	ANTDRIP VALVE	4	
4	X02.008.100	DISTRIBUTORE LIQUIDO TESTATE DIVISO	DIVIDED SPRAYHEADS LIQUID MANIFOLD	1	
5	XOR.002.043	OR 10.82X14.38X1.78 NBR70	10.82X14.38X1.78 NBR70 O-RING GASKET	4	



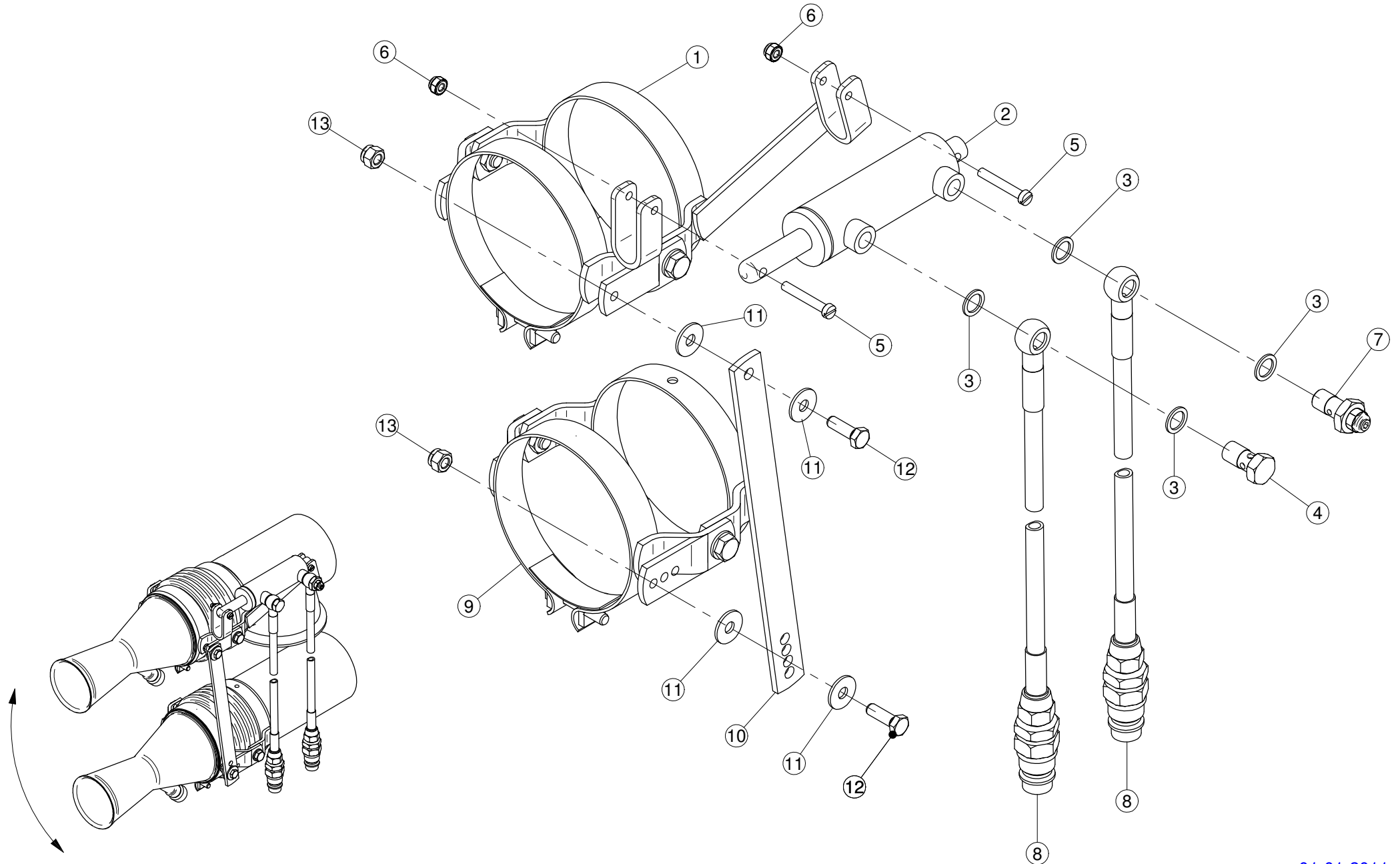
Sez. T03
Condotto dell'aria
Air duct

Sez. T06
Circuito idraulico
Plumbing of liquids

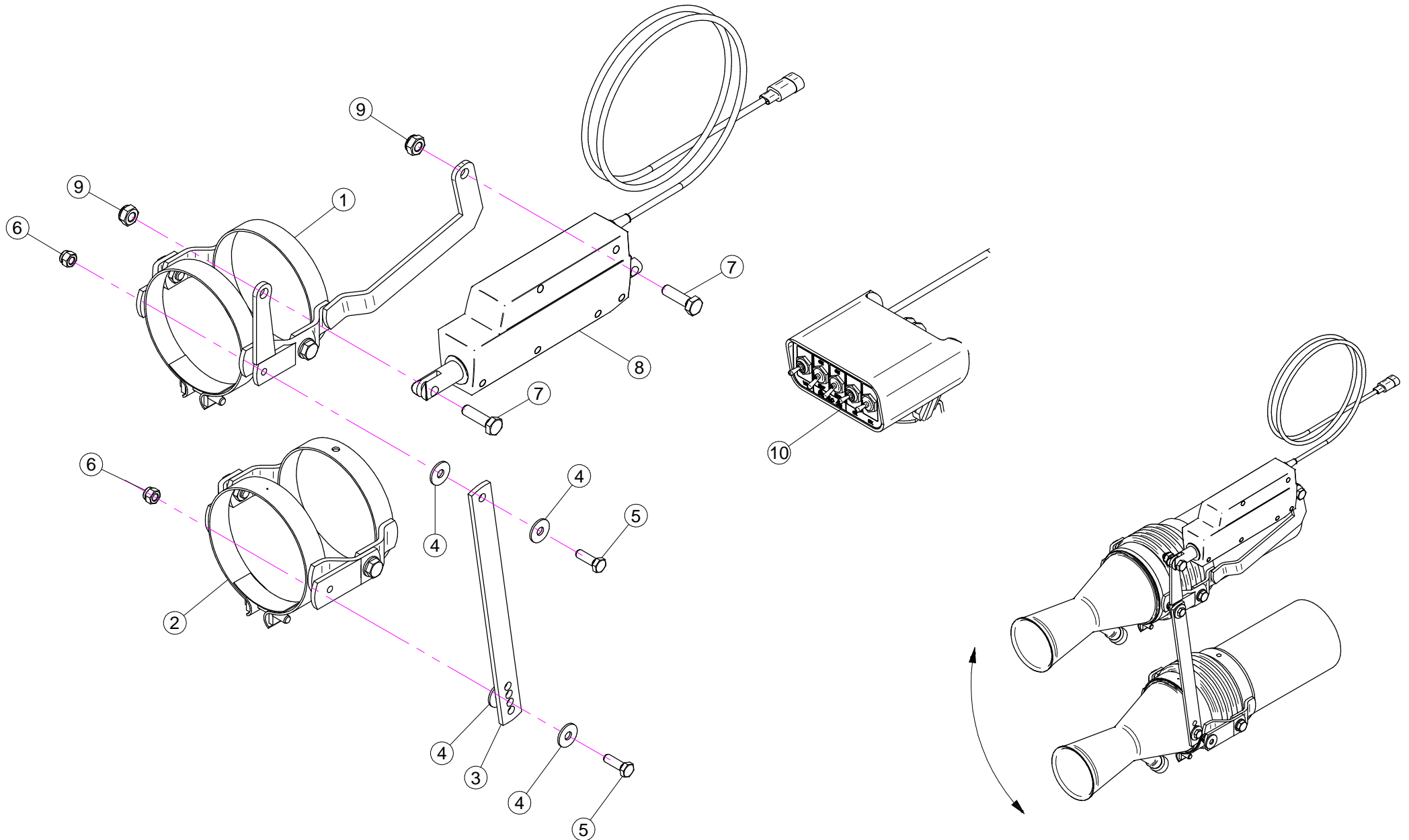


N°	Doc. Number	Titolo	Title	Q.tà
1	X50.081.000	CORPO D.250 L=150 CON 2 USCITE D.80	BODY D.250 L=150 WITH 2 OUTLETS D.80	1
2	X02.020.000	MANICOTTO FLESSIBILE D.80 x 115	FLEXIBLE SLEEVE D.80 x 115	2
3	X02.046.000	COPPIA FASCETTE D.85	CLAMP D.85	2
4	X20.221.100DX	MANO Ø 80 A DUE USCITE	TWO OUTLETS BODY	1
5	X20.221.100SX	MANO Ø 80 A DUE USCITE	TWO OUTLETS BODY	1
6	X00.004,5.50	DIFFUSORE 4,5/50	NOZZLE 4,5/50	4
7	X05.813.000	COLLARE D.275	CLAMP D.275	1
8	X20.697.000	FERMA DIFFUSORI	NOZZLE STOP	1

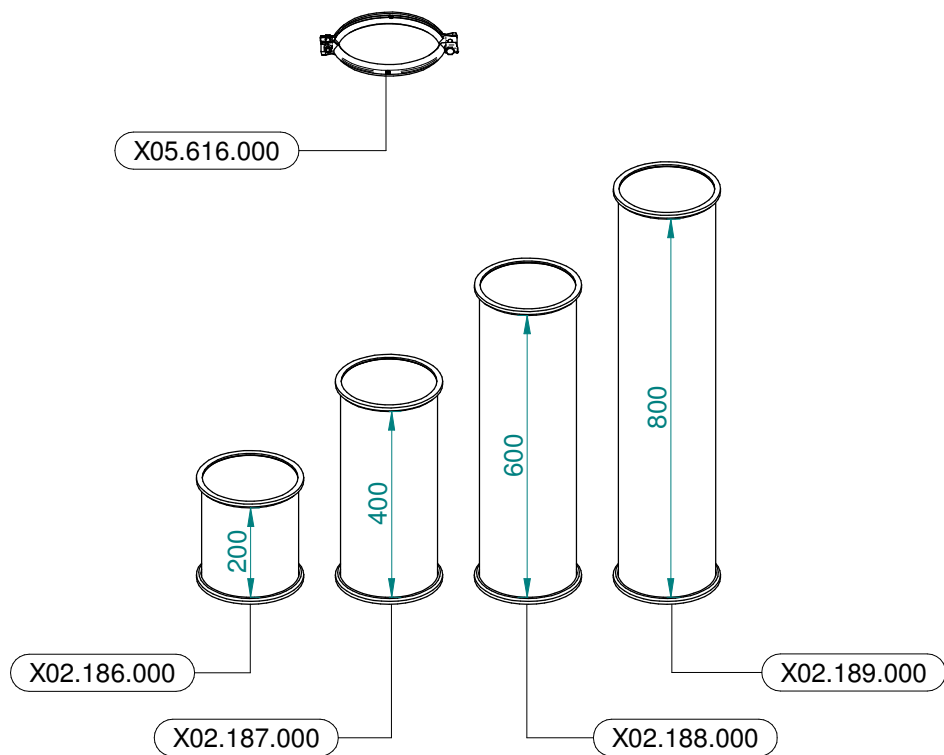
N°	Doc. Number	Titolo	Title	Q.tà
1	X02.008.404C	DISTRIBUTORE LIQUIDI A 4 RUBINETTI	4 TAPS LIQUID MANIFOLD	1
2	X02.150.000	REGOLATORE A DISCO ROTANTE COMPLETO	ROTATION DISK REGULATION	2
3	XFC.013,5.015	FASCETTA COBRA SLO30710	KOBRA CLAMP	6
4	XTE.006.020T	VITE TE M6 x 20	SCREW TE M6 x 20	2
5	XD0.06.5588G	DADO M6	NUT M6	2
6	XFC.012,5.014	FASCETTA COBRA SLO30705	KOBRA CLAMP	4
7	X20.885.000	RACCORDO A T D.13-13-13	T UNION D.13-13-13	2
8	XFC.016,5.018	FASCETTA COBRA 16,5 - 18	KOBRA CLAMP 16,5 - 18	8
9	X00.226.05C	GETTO ANTIGOCCIA DIRITTO COMPLETO	COMPLETE ANTIDROP	2
10	X02.349.000	GUARNIZIONE PIANA D.17X23X3	17X23X3 FLAT GASKET	2
11	X00.055.046R	RACCORDO CURVO P.G. D.14	CURVED UNION WITH R.H. D.14	2
12	X00.055.045	GIRELLO 3/4" GAS	3/4" FLY NUT	2
13	XFC.015,5.017	FASCETTA COBRA SLO30720	KOBRA CLAMP	2
14	XRP.006.000	RONDELLA PIANA D. 6	WASHER D.6	4
15	X02.213.007	TUBO D.10x16 L=70	HOSE D.10x16 L=70	2
16	X02.213.080	TUBO D.10 x 16 L=80 cm	PIPE D.10 x 16 L=80 cm	1
17	X02.213.080	TUBO D.10 x 16 L=80 cm	PIPE D.10 x 16 L=80 cm	1
18	X02.217.054	TUBO D.8x13 L=540	HOSE D.8x13 L=540	1
19	X02.217.047	TUBO D.8x13 L=470	HOSE D.8x13 L=470	1
20	X02.217.054	TUBO D.8x13 L=540	HOSE D.8x13 L=540	1
21	X02.217.047	TUBO D.8x13 L=470	HOSE D.8x13 L=470	1



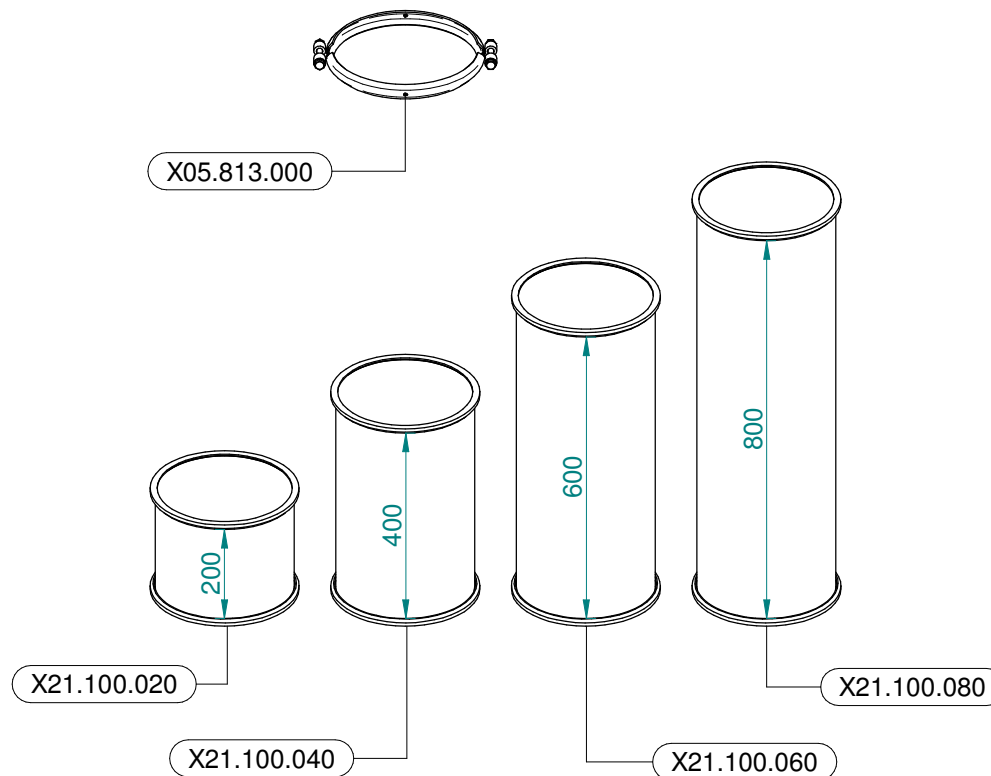
N°	Doc. Number	Titolo	Title	Q.tà	Note
1	X02.140.200	COPPIA FASCETTE ORIENTABILI D.127 CON ATTACCO PISTONE	CLAMP D.127 WITH JACK BRACKET	2	
2	X02.840.04C	MARTINETTO COMPLETO D.20/30 CORSA 60	JACK	2	
3	X02.472.000	RONDELLA DI RAME	COPPER WASHER	8	
4	X02.408.000	RACCORDO DRITTO PER OCCHIO	JACK EYE RIGHT UNION	2	
5	XTC.06.40.07I	VITE T.CIL. M6 x 40 INOX	INOX SCREW M6 x 40	4	
6	XDA.006.0AG	DADO AUTOBLOCCANTE M6 ALTO PG	SELF-LOCKING NUT - HIGH M6	4	
7	X20.718.000	REGOLATORE PORTATA IDRAULICA	FLOW REGULATOR	2	
8	X20.900.370	TUBO OLIO PER MARTINETTO L=3700	OIL PIPE FOR JACK L=3700	4	
9	X02.140.020	COPPIA FASCETTE ORIENTABILI D.127	CANNON SPRAYER CLAMP D.127	2	
10	X20.922.000	STAFFA COLLEGAMENTO PER DIFF.MOVIM. IDRAULICA	UNION BRACKET	2	
11	XRP.008.024	RONDELLA PIANA LARGA D.8X24	WASHER D.8X24	8	
12	XTE.008.025T	VITE TE M8 x 25	SCREW TE M8 x 25	4	
13	XDA.008.0AG	DADO AUTOBLOCCANTE M8	SELF LOCKING NUT M8	4	



N°	Doc. Number	Titolo	Title	Q.tà	Note
1	X02.140.500	COPPIA FASCETTE ORIENTABILI D.127 CON ATTACCO ATTUATORE	CLAMP D.127 WITH ACTUATOR BRACKET	2	
2	X02.140.020	COPPIA FASCETTE ORIENTABILI D.127	CANNON SPRAYER CLAMP D.127	2	
3	X20.922.000	STAFFA COLLEGAMENTO PER DIFF.MOVIM. IDRAULICA	UNION BRACKET	2	
4	XRP.008.024	RONDELLA PIANA LARGA D.8X24	WASHER D.8X24	8	
5	XTE.008.025T	VITE TE M8 x 25	SCREW TE M8 x 25	4	
6	XDA.008.0AG	DADO AUTOBLOCCANTE M8	SELF LOCKING NUT M8	4	
7	XTE.010.035T	VITE TE 10 x 35	SCREW TE 10 x 35	4	
8	X21.016.000	ATTUATORE LINEARE (LA 12.1)	LINEAR ACTUATOR (LA 12.1)	2	
9	XDA.010.0BG	DADO AUTOBLOCCANTE M10	SELF LOCKING NUT M10	4	
10	X21.030.200	KIT COMANDO ELETTRICO (ATTUATORI / ELETROVALVOLE)	KIT REMOTE CONTROL (LINEAR ACTUATOR / SOLENOID VALVE)	1	



Ø 175
 Plus 42 - 45 - 50
 Blitz 45 - 50
 Link 50



Ø 250
 Plus 55
 Blitz 55
 Link 55