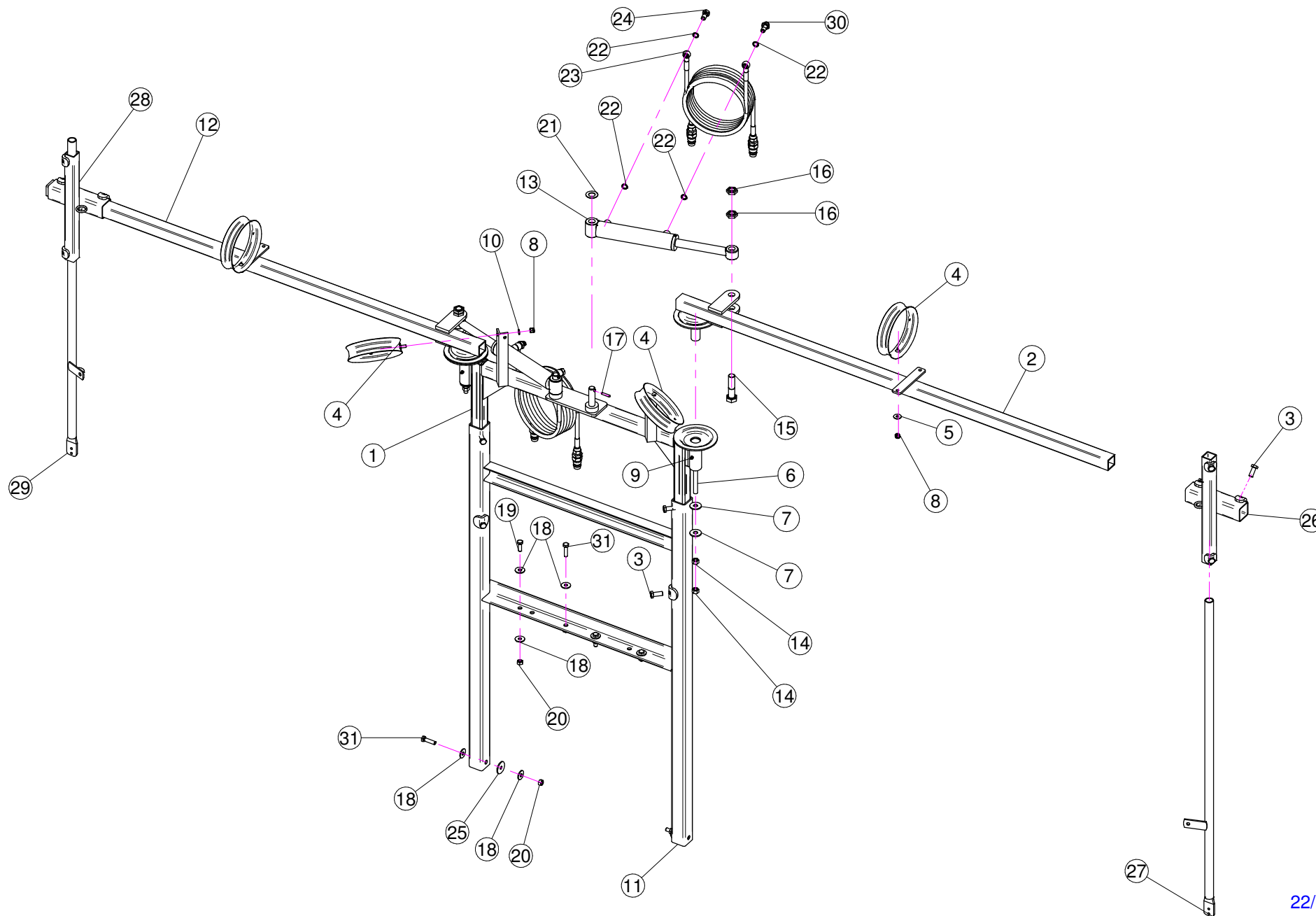
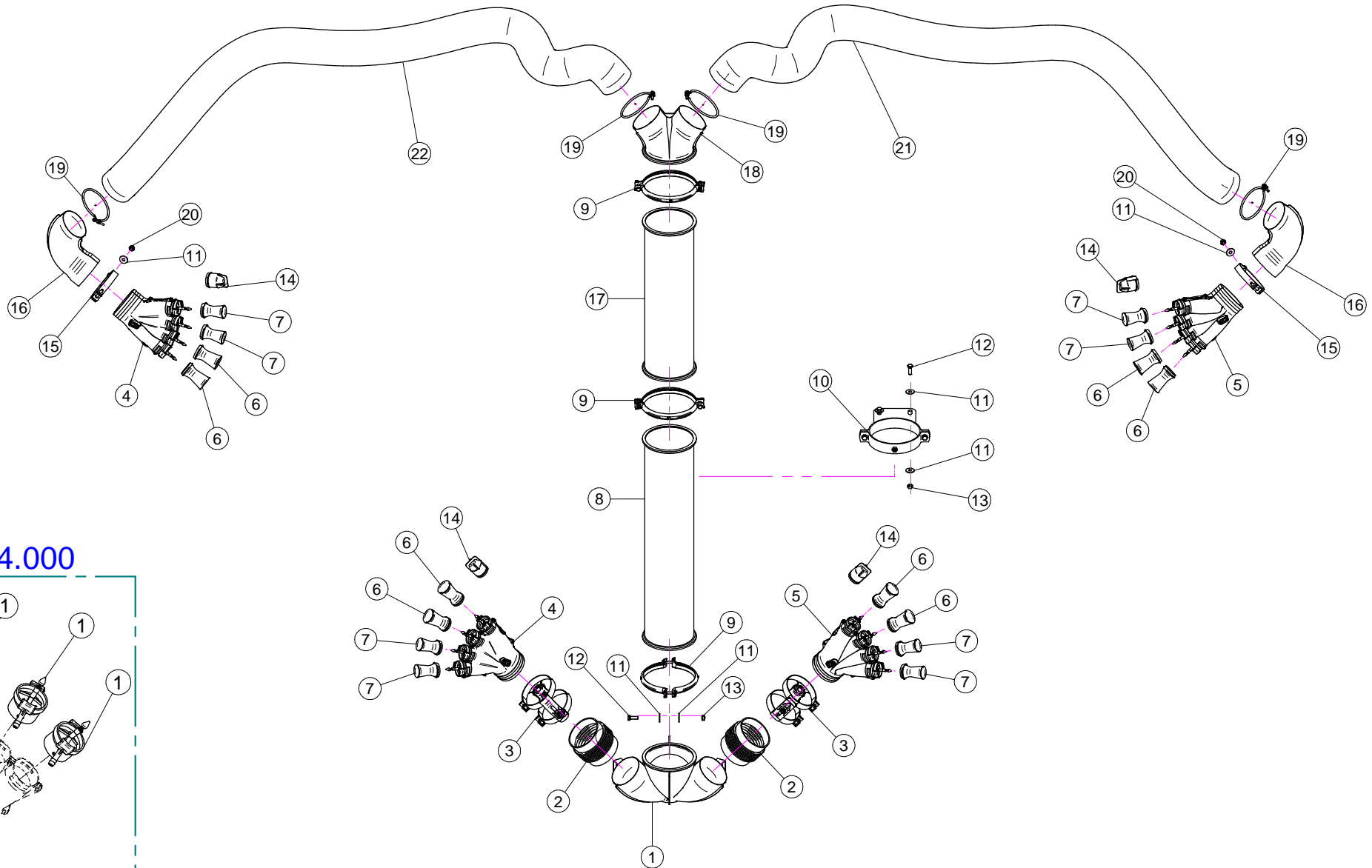


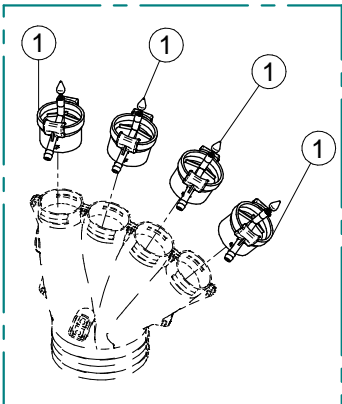
(⌘) A richiesta / Optional Devices



N°	Doc. Number	Titolo	Title	Qtà
1	X20.870.201	TELAIO SCORREVOLE	SLIDING FRAME	1
2	X20.871.102	BRACCIO LATERALE DESTRO	RIGHT LEG	1
3	XTE.012.030T	VITE TE 12 x 30	SCREW TE 12 x 30	12
4	X20.227.000	ANELLO GUIDA TUBI PICCOLO	SMALL PIPE GUIDE RING	4
5	XRP.008.024	RONDELLA PIANA LARGA D.8X24	WASHER D.8X24	2
6	XBRF.012.010	BARRA FILETTATA M12 L=100	PIPE M12 L=100	2
7	XRP.012.036	RONDELLA PIANA D12 X 36	WASHER D12 X 36	4
8	XDA.008.0AG	DADO AUTOBLOCCANTE M8	SELF LOCKING NUT M8	4
9	XID.006.001	INGRASSATORE DIRITTO M6	GREASER	2
10	XRP.008.000	RONDELLA PIANA D.8	WASHER D.8	2
11	X21.049.100	TELAIO CENTRALE FISSO	CENTRAL FRAME	1
12	X20.872.102	BRACCIO LATERALE SINISTRO	LEFT LEG	1
13	X02.838.01C	MARTINETTO LATERALE COMPLETO	SIDE JACK	2
14	XD0.12.5587G	DADO M12 PG UNI 5587	M12 NUT	4
15	XTE.020.080	VITE TE M20 x 80	SCREW TE M20 x 80	2
16	XDO.20.5589G	DADO BASSO M20	LOWER NUT M20	4
17	XSE.006.030	SPINA ELASTICA D.6 x 30	ELASTIC PIN D.6 x 30	2
18	XRP.010.030	RONDELLA PIANA D.10 x 30 mm	WASHER D.10 x 30 mm	12
19	XTE.010.030T	VITE TE M10 x 30	SCREW TE M10 x 30	2
20	XD0.10.5587G	DADO M10	NUT M10	6
21	XRP.020.000	RONDELLA PIANA D.20	WASHER D.20	2
22	X02.472.000	RONDELLA DI RAME	COPPER WASHER	8
23	X20.900.600	TUBO OLIO PER MARTINETTO L=6000	OIL PIPE FOR JACK L=6000	4
24	X02.408.000	RACCORDO DRITTO PER OCCHIO 1/4"	JACK EYE RIGHT UNION 1/4"	2
25	XRP.010.040	RONDELLA PIANA D.10 X 40	WASHER D.10 X 40	2
26	X20.873.100	ANELLO DI SCORRIMENTO DESTRO	RIGHT SLIDING RING	1
27	X20.685.600.Z	BRACCIO FISSAGGIO DIFFUSORE DESTRO ZINCATO	RIGHT NOZZLE FIXING ARM	1
28	X20.874.100	ANELLO DI SCORRIMENTO SINISTRO	LEFT SLIDING RING	1
29	X20.685.500.Z	BRACCIO FISSAGGIO DIFFUSORE SINISTRO ZINCATO	LEFT NOZZLE FIXING ARM	1
30	X20.718.000	REGOLATORE PORTATA IDRAULICA	FLOW REGULATOR	2
31	XTE.010.040T	VITE TE M10 x 40	SCREW TE M10 x 40	4



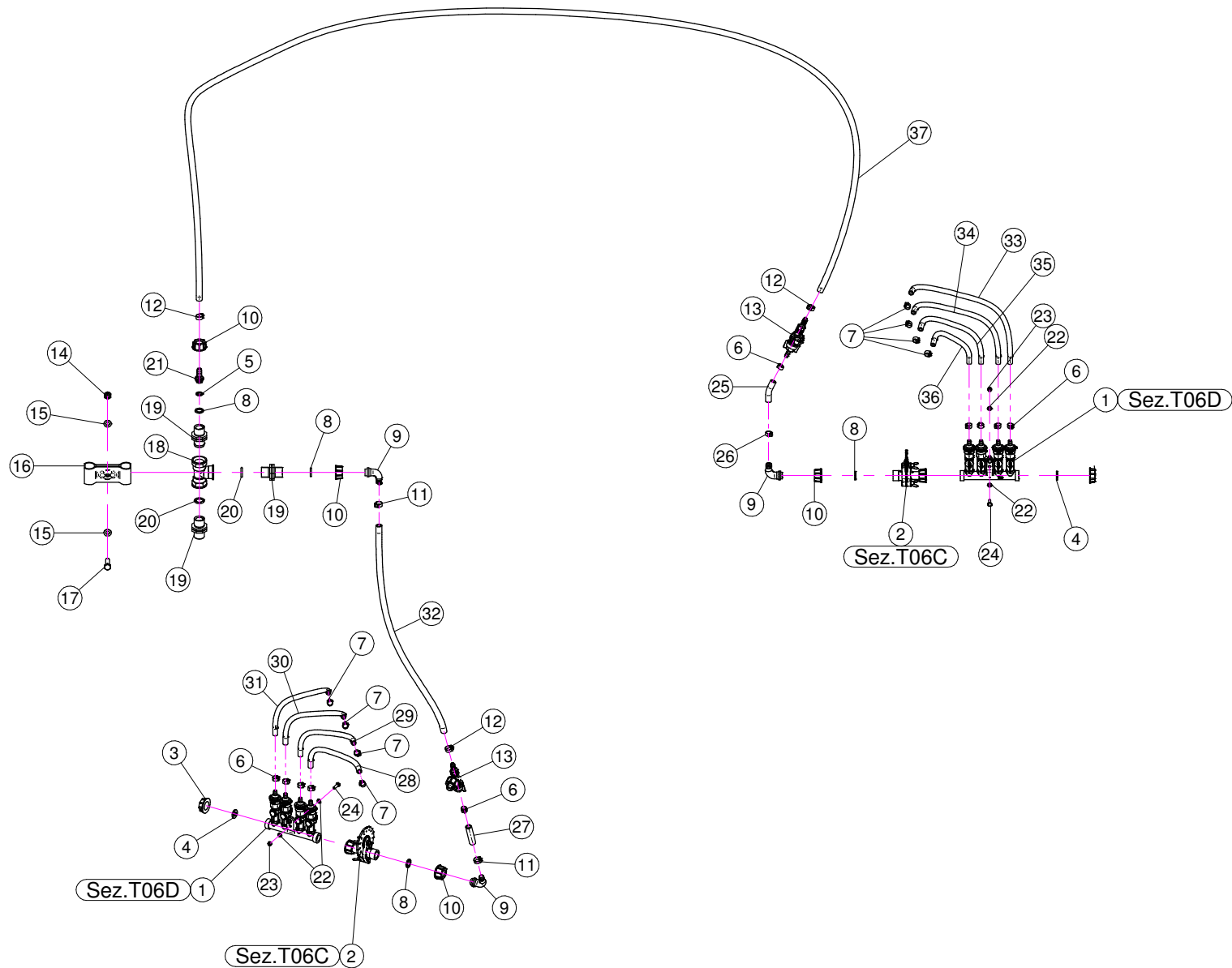
X20.014.000



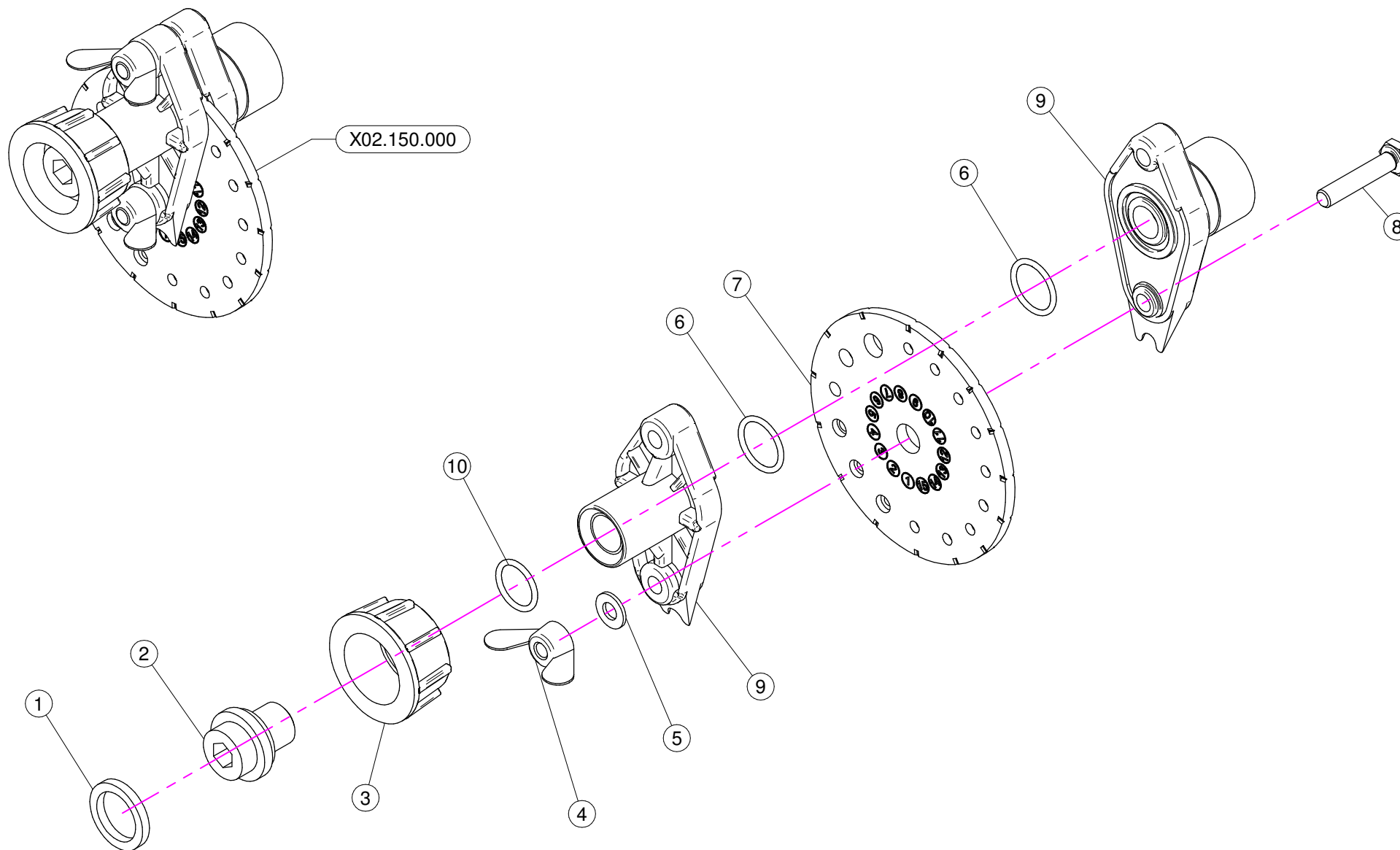
N°	Doc. Number	Titolo	Title	Q.tà	Note
1	X02.996.100	CURVA INFERIORE D.175 CON 2 USCITE D.120	LOWER BEND	1	
2	X02.021.000	MANICOTTO FLESSIBILE D.120	FLEXIBLE SLEEVE	2	
3	X21.080.000	COPPIA FASCETTE Ø 127 DESTRA	RIGHT CLAMP Ø 127	2	
4	X20.014.000SX	MANO A 4 USCITE CON TUBETTI	FOUR OUTLETS	2	
5	X20.014.000DX	MANO A 4 USCITE CON TUBETTI	FOUR OUTLETS	2	
6	X00.008.050	DIFFUSORE 8/50	NOZZLE 8/50	8	
7	X00.006.050	DIFFUSORE 6/50	NOZZLE 6/50	8	
8	X02.189.000	PROLUNGA D.175 X 800	EXTENSION D.175 X 800	1	
9	X05.616.000	COLLARE PER TUBI D.175	PIPE CLAMP D.175	3	
10	X20.503.000	FASCETTA D.175 FISSAGGIO TESTATE	D.175 CLAMP HEADS FIXING	1	
11	XRP.010.030	RONDELLA PIANA D.10 x 30 mm	WASHER D.10 x 30 mm	8	
12	XTE.010.030T	VITE TE M10 x 30	SCREW TE M10 x 30	3	
13	XD0.10.5587G	DADO M10	NUT M10	3	
14	X02.127.000	TAPPO DI ATTACCO RAPIDO	CAP NOZZLE PLUG	4	
15	X00.125.001	FEMMINA FASCETTA D.125 ORIENTABILE	FEMALE CLAMP D.125	2	
16	X04.845.000	CURVA D.120 A 105°	ELBOW D.120 A 105°	2	
17	X02.188.000	PROLUNGA D.175 X 600	EXTENSION D.175 X 600	1	
18	X02.739.400	CORPO TESTATA D.175 A 2 USCITE	BODY HEAD	1	
19	XF0.120.000	FASCETTA UNIFILO D.120	CLAMP D.120	4	
20	XDA.010.0BG	DADO AUTOBLOCCANTE M10	SELF LOCKING NUT M10	2	
21	X02.239.230	TUBO POLIURETANO D.120 L=2300	HOSE D.120 L=2300	1	
22	X02.239.230	TUBO POLIURETANO D.120 L=2300	HOSE D.120 L=2300	1	

X20.014.000

N°	Doc. Number	Titolo	Title	Q.tà
1	X20.016.01C	RACCORDO ATTACCO RAPIDO PORTA TUBETTO	PIPE WITH OLIVE	4

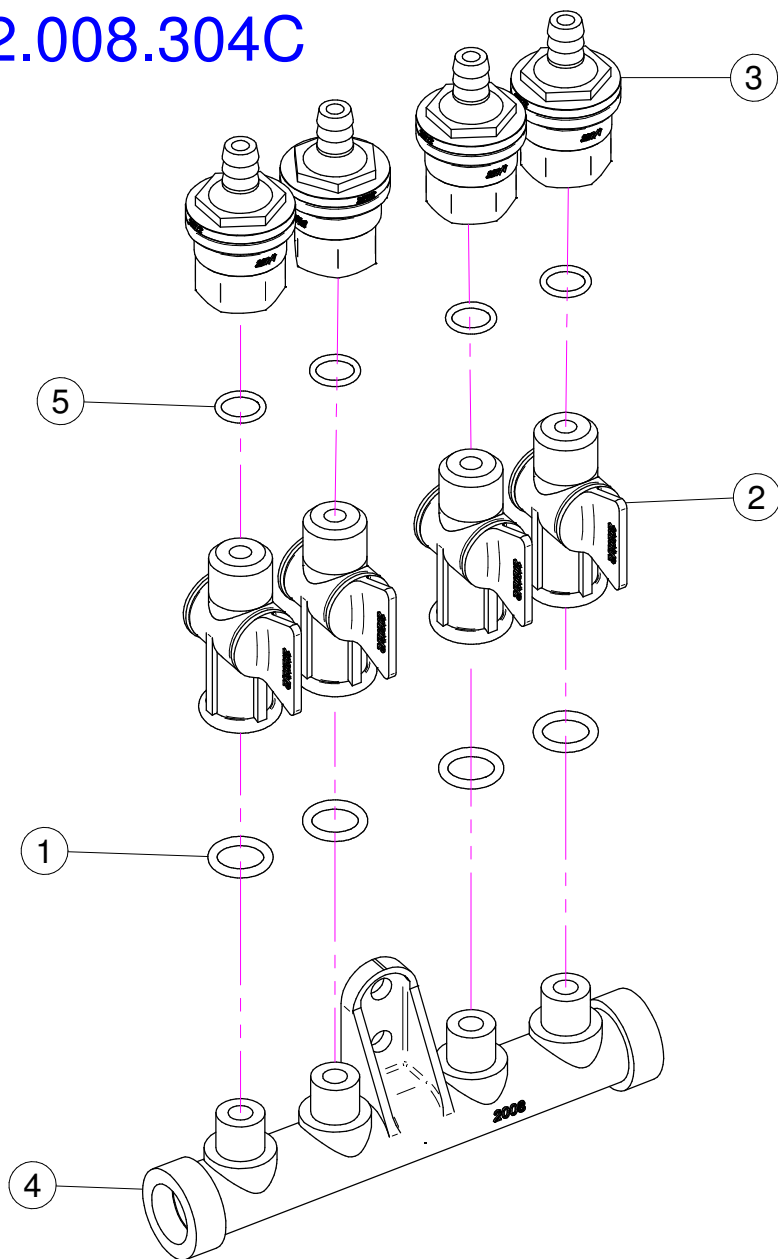


N°	Doc. Number	Titolo	Title	Q.tà	Note
1	X02.008.304C	DISTRIBUTORE LIQUIDI A 4 RUBINETTI	4 TAPS LIQUID MANIFOLD	4	
2	X02.150.000	REGOLATORE A DISCO ROTANTE COMPLETO	ROTATION DISK REGULATION	4	
3	X02.182.000	TAPPO 3/4" FEMMINA	FEMALE 3/4" CAP	4	
4	X02.030.010	GUARNIZIONE TAPPO DISTRIBUTORE	GASKET	4	
5	XOR.000.117	OR D. 13,1x18,34x2,62	13,1x18,34x2;62 O-RING GASKET	2	
6	XFC.013,5.015	FASCETTA COBRA SLO30710	KOBRA CLAMP	20	
7	XFC.012,5.014	FASCETTA COBRA SLO30705	KOBRA CLAMP	16	
8	X02.349.000	GUARNIZIONE PIANA D.17X23X3	17X23X3 FLAT GASKET	8	
9	X00.055.046R	RACCORDO CURVO P.G. D.14	CURVED UNION WITH R.H. D.14	6	
10	X00.055.045	GIRELLO 3/4" GAS	3/4" FLY NUT	8	
11	XFC.016,5.018	FASCETTA COBRA 16,5 - 18	KOBRA CLAMP 16,5 - 18	4	
12	XFC.015,5.017	FASCETTA COBRA SLO30720	KOBRA CLAMP	6	
13	X00.226.05C	GETTO ANTIGOCCIA DIRITTO COMPLETO	COMPLETE ANTIDROP	4	
14	XDA.010.0BG	DADO AUTOBLOCCANTE M10	SELF LOCKING NUT M10	1	
15	XRP.010.000	RONDELLA PIANA D.10	WASHER D.10	2	
16	X02.999.000	STAFFA FISSAGGIO RACCORDO A T	T UNION FIXING BRACKET	1	
17	XTE.010.035T	VITE TE 10 x 35	SCREW TE 10 x 35	1	
18	X02.396.000	RACCORDO A T 3/4" - 3/4" - 3/4" F.	UNION 3/4" - 3/4" - 3/4" F.	2	
19	X02.380.000	NIPPLO 3/4"	NIPPLE 3/4"	6	
20	XOR.004.081	OR D.20,22 x 3,53	20,22 x 3,53 O-RING GASKET	6	
21	X02.122.000	RACCORDO A P.G. D.13	D.13 UNION	2	
22	XRP.006.000	RONDELLA PIANA D. 6	WASHER D.6	16	
23	XD0.06.5588G	DADO M6	NUT M6	8	
24	XTE.006.020T	VITE TE M6 x 20	SCREW TE M6 x 20	8	
25	X02.213.007	TUBO D.10 L=70	HOSE D.10 L=70	2	
26	XFC.014,5.016	FASCETTA COBRA SLO30716	KOBRA CLAMP	2	
27	X02.213.007	TUBO D.10x16 L=70	HOSE D.10x16 L=70	2	
28	X02.217.031	TUBO D. 8 x 13 L=310	HOSE D. 8 x 13 L=310	2	
29	X02.217.033	TUBO D. 8 x 13 L=330	HOSE D. 8 x 13 L=330	2	
30	X02.217.039	TUBO D. 8 x 13 L=390	HOSE D. 8 x 13 L=390	2	
31	X02.217.041	TUBO D. 8 x 13 L=410	HOSE D. 8 x 13 L=410	2	
32	X02.213.070	TUBO D.10 x 16 L=700	HOSE D.10 x 16 L=700	2	
33	X02.217.045	TUBO D. 8 x 13 L=450	HOSE D. 8 x 13 L=450	2	
34	X02.217.039	TUBO D. 8 x 13 L=390	HOSE D. 8 x 13 L=390	2	
35	X02.217.031	TUBO D. 8 x 13 L=310	HOSE D. 8 x 13 L=310	2	
36	X02.217.025	TUBO D. 8 x 13 L=250	HOSE D. 8 x 13 L=250	2	
37	X02.213.320	TUBO D.10x16 L=3200	HOSE D.10x16 L=3200	2	



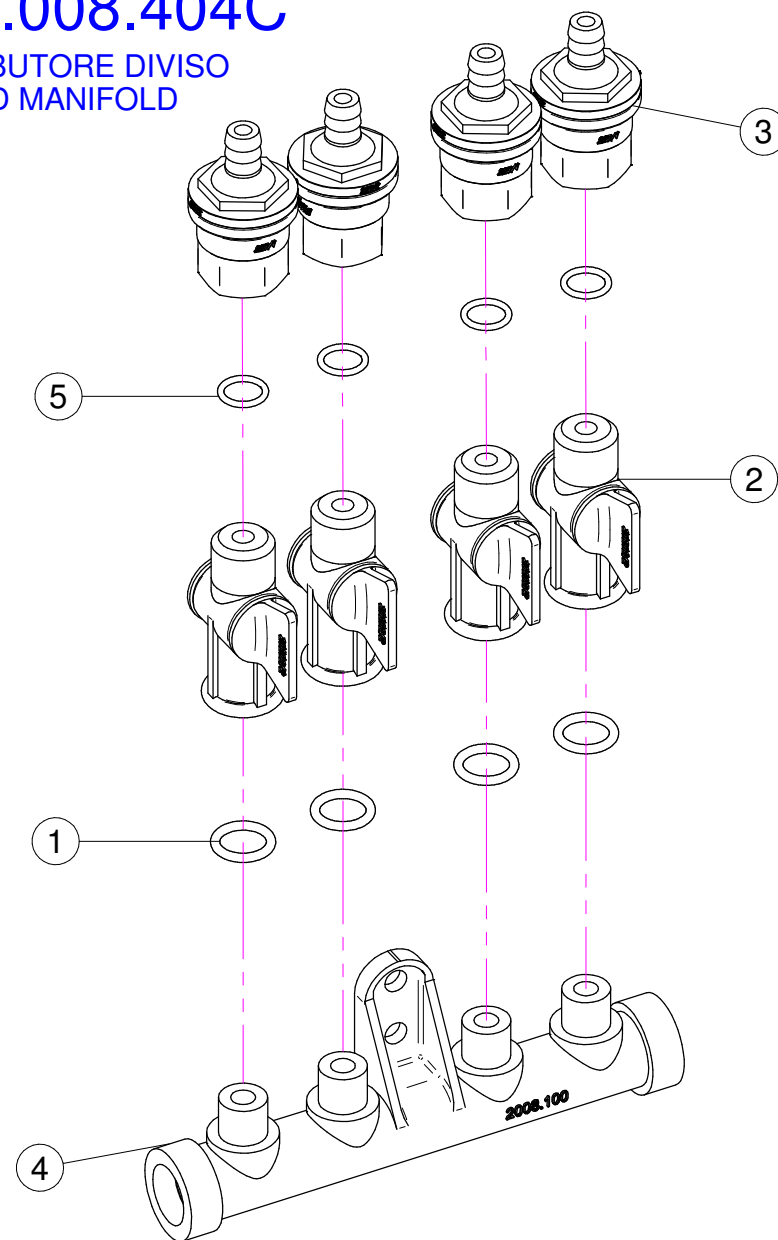
N°	Doc. Number	Titolo	Title	Q.tà	Note
1	X02.349.000	GUARNIZIONE PIANA D.17X23X3	17X23X3 FLAT GASKET	1	
2	X02.117.000	NIPPLO M14X1.5/D.17	ADAPTOR NIPPLE	1	
3	X00.055.045	GIRELLO 3/4" GAS	3/4" FLY NUT	1	
4	XDF.OTT.006	DADO AD ALETTE IN OTTONE M6	WING NUT M6	2	
5	XRP.006.000I	RONDELLA PIANA D. 6 INOX	INOX WASHER D.6	2	
6	XOR.002.062	OR D.15.6X1.78	D.15.6X1.78 OR	2	
7	X02.148.000	DISCO ROTANTE PER REGOLATORE	REGULATOR DISK	1	
8	XTE.006.030I	VITE TE M6X30 INOX	INOX M6X30 BOLT	2	
9	X02.147.500	COPPIA DI SEMICORPO REGOLATORE	REGULATOR HALF-BODY	1	
10	XOR.002.050	OR 12,43 x 1,78 NBR70	12,43 x 1,78 NBR70 O-RING GASKET	1	

X02.008.304C



X02.008.404C

DISTRIBUTORE DIVISO
DIVIDED MANIFOLD

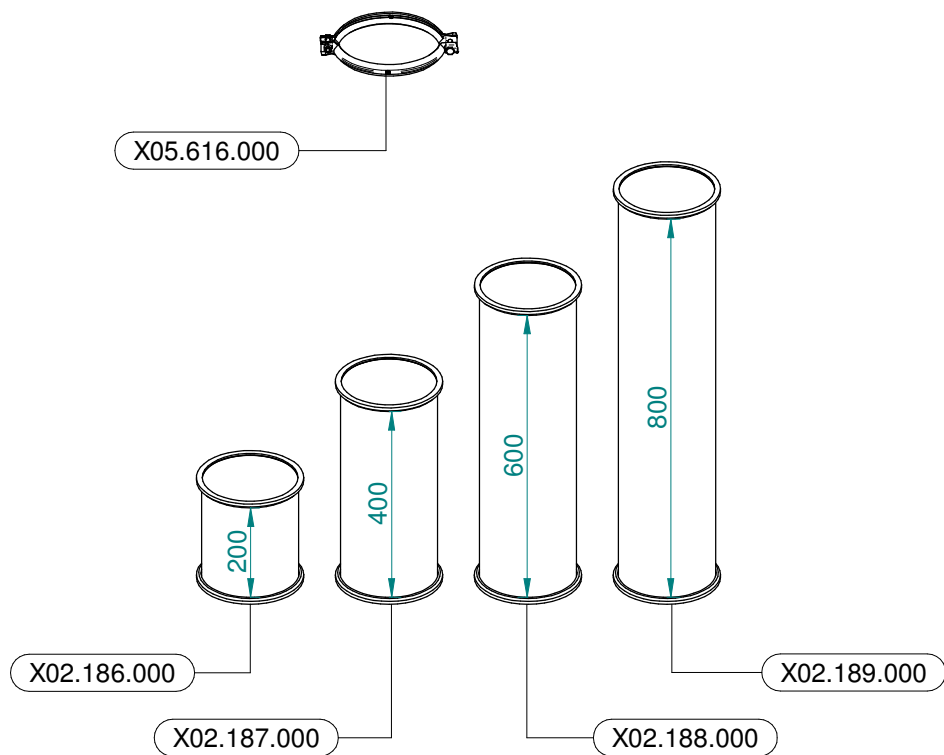


X02.008.304C

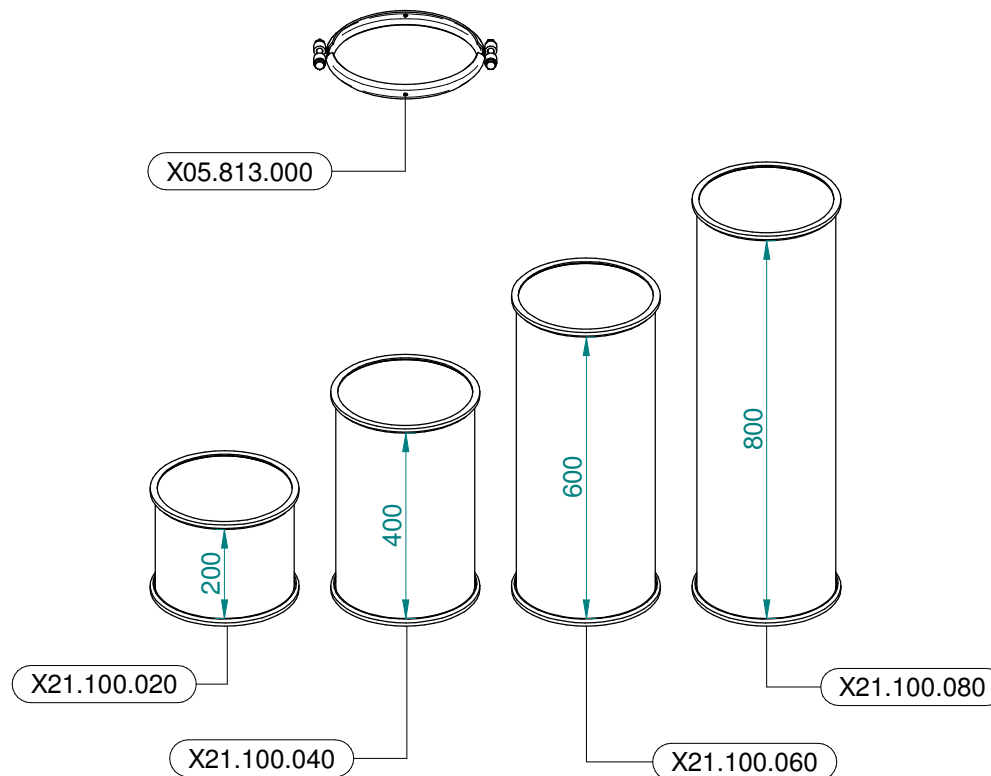
N°	Doc. Number	Titolo	Title	Q.tà	Note
1	XOR.000.117	OR D. 13,1x18,34x2,62	13,1x18,34x2;62 O-RING GASKET	4	
2	X20.202.100	RUBINETTO P.G. D.10 F.1/4" GAS TAGLIATO	TAP ASSEMBLY	4	
3	X00.227.01C	DISPOSITIVO ANTIGOCCIA	ANTDRIP VALVE	4	
4	X02.008.000	DISTRIBUTORE LIQUIDO TESTATE	SPRAYHEADS LIQUID MANIFOLD	1	
5	XOR.002.043	OR 10.82X14.38X1.78 NBR70	10.82X14.38X1.78 NBR70 O-RING GASKET	4	

X02.008.404C

N°	Doc. Number	Titolo	Title	Q.tà	Note
1	XOR.000.117	OR D. 13,1x18,34x2,62	13,1x18,34x2;62 O-RING GASKET	4	
2	X20.202.100	RUBINETTO P.G. D.10 F.1/4" GAS TAGLIATO	TAP ASSEMBLY	4	
3	X00.227.01C	DISPOSITIVO ANTIGOCCIA	ANTDRIP VALVE	4	
4	X02.008.100	DISTRIBUTORE LIQUIDO TESTATE DIVISO	DIVIDED SPRAYHEADS LIQUID MANIFOLD	1	
5	XOR.002.043	OR 10.82X14.38X1.78 NBR70	10.82X14.38X1.78 NBR70 O-RING GASKET	4	



Ø 175
 Plus 42 - 45 - 50
 Blitz 45 - 50
 Link 50



Ø 250
 Plus 55
 Blitz 55
 Link 55