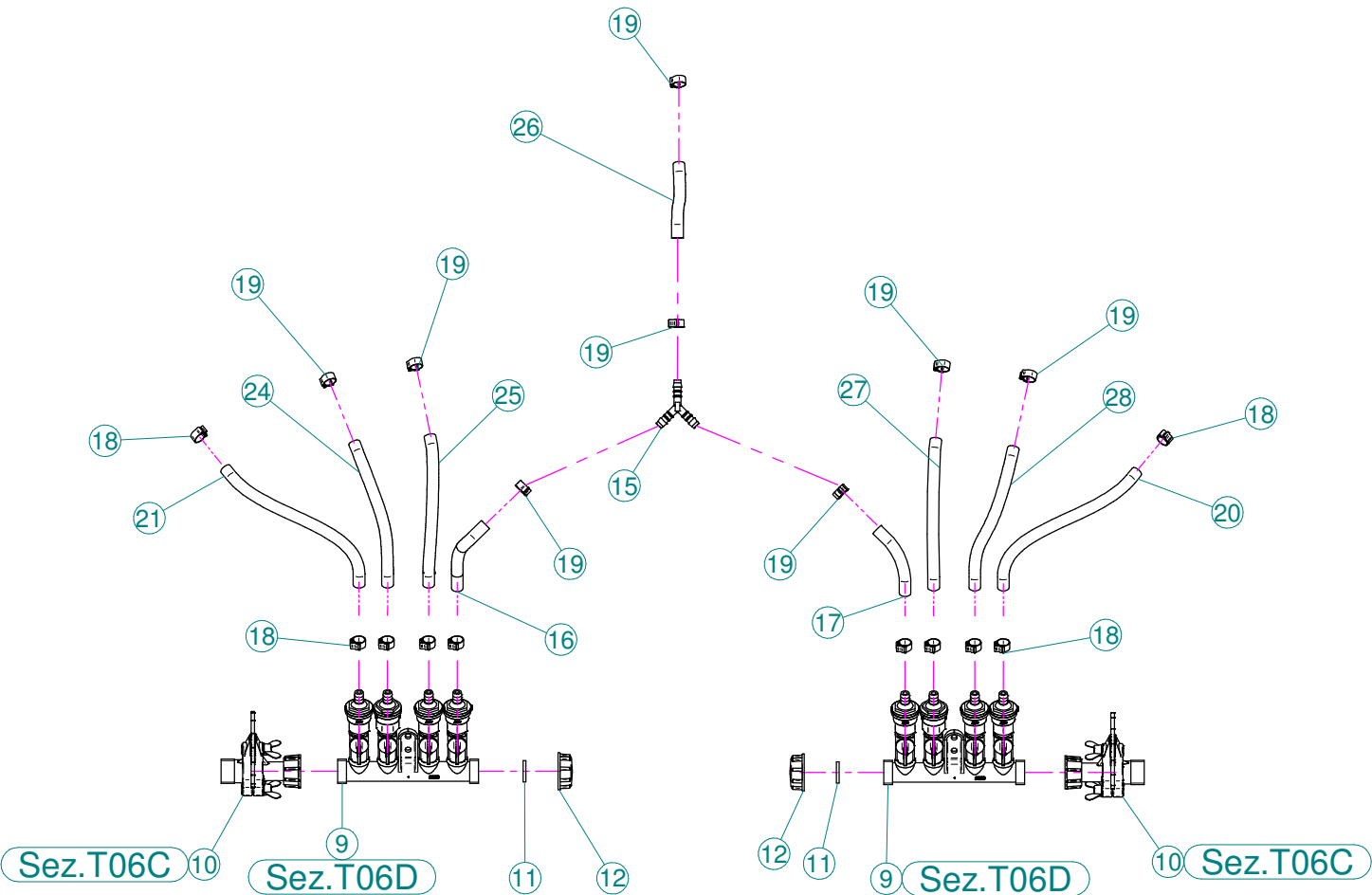
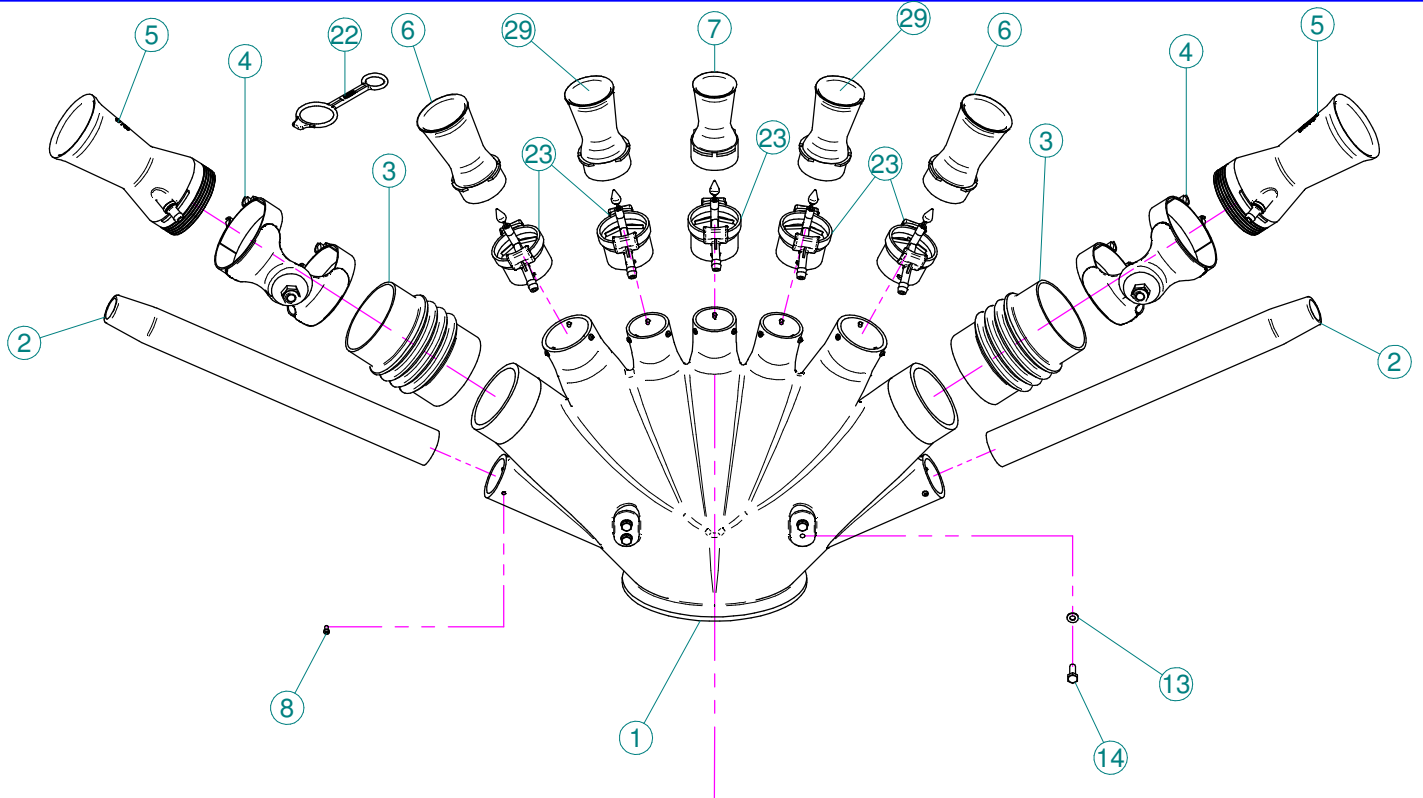


Sez. T03
Condotto dell'aria
Air duct

Sez. T06
Circuito idraulico
Plumbing of liquids



Sez.T06C 10

Sez.T06D 9

11

12

12

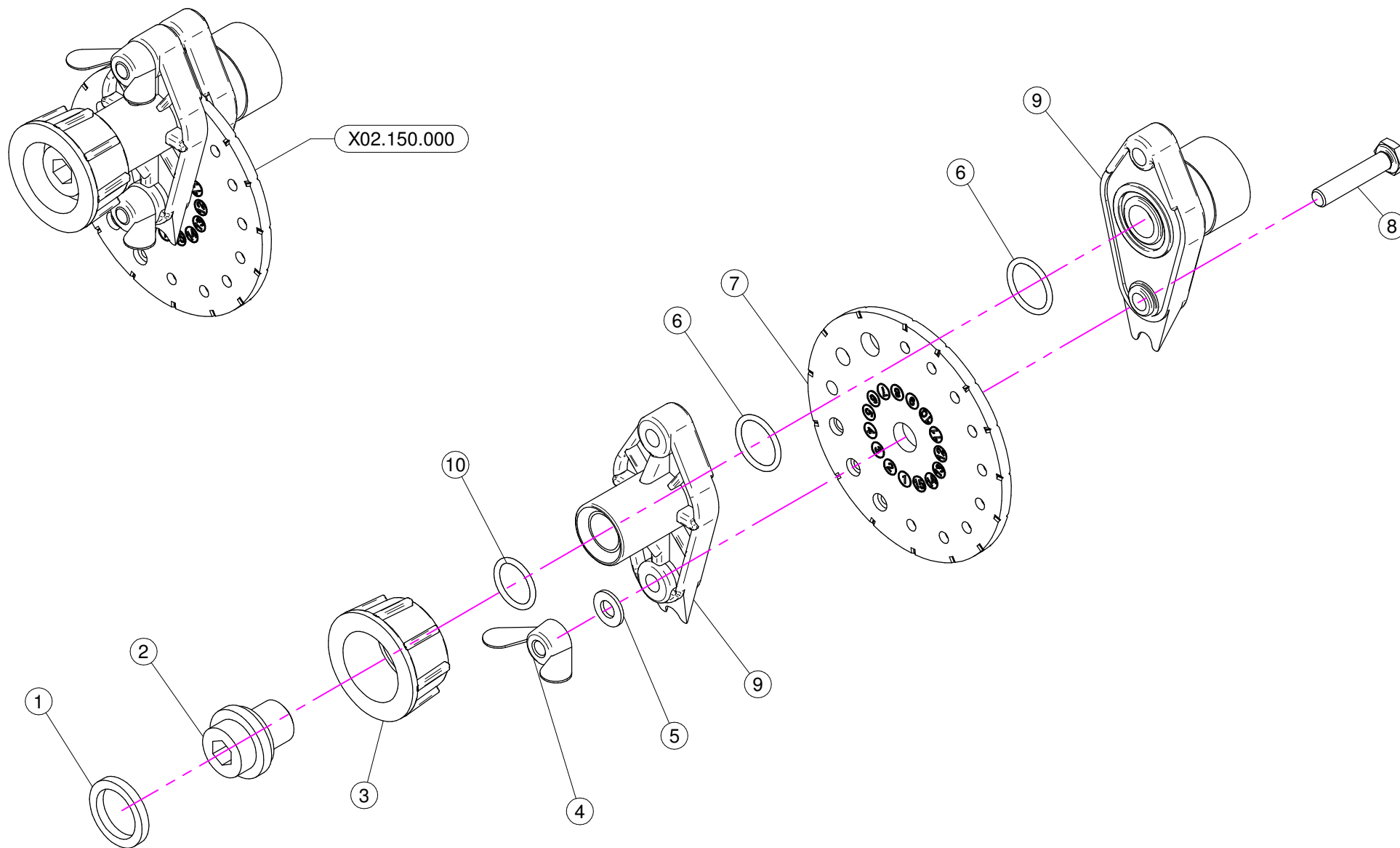
11

9 Sez.T06D

10

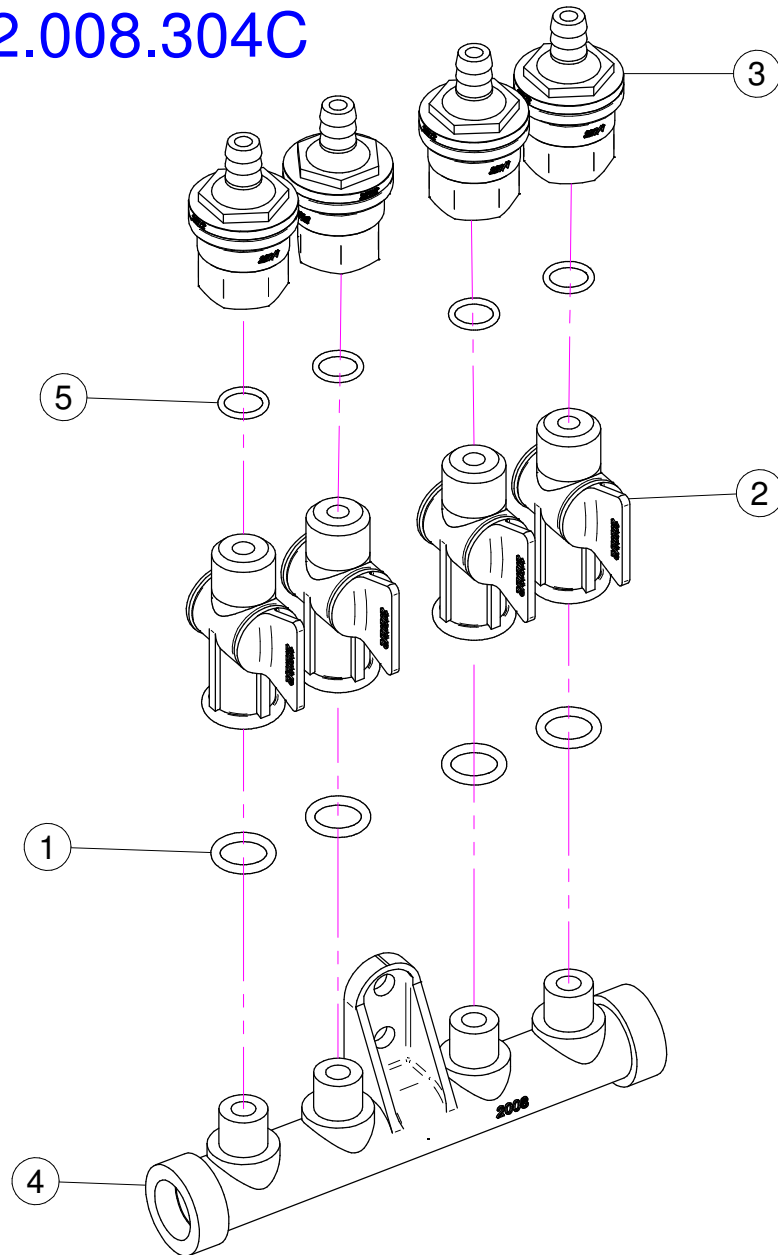
Sez.T06C

N°	Doc. Number	Titolo	Title	Q.tà
1	X00.555.000	CORPO TESTATA A TENDONE D.175 (NON FORNITO)	BODY FOR CANOPY SPRAY HEAD (NOT SUPPLIED)	1
2	X02.181.010	TUBO DI LANCIO LATERALE D.40	AIR TUBE D.40	2
3	X02.020.000	MANICOTTO FLESSIBILE D.80 x 115	FLEXIBLE SLEEVE D.80 x 115	2
4	X02.046.000	COPPIA FASCETTE D.85	CLAMP D.85	2
5	X10.017.080	DIFFUSORE 17/80 CON TUBETTO	NOZZLE 17/80	2
6	X00.010.050	DIFFUSORE 10/50	NOZZLE 10/50	2
7	X00.006.050	DIFFUSORE 6/50	NOZZLE 6/50	1
8	XTA.03,5,09,51	VITE AUTOFILETTANTE D.3,5 x 9,5	SELF THREADING D.3,5 x 9,5	19
9	X02.008.304C	DISTRIBUTORE LIQUIDI A 4 RUBINETTI	4 TAPS LIQUID MANIFOLD	2
10	X02.150.000	REGOLATORE A DISCO ROTANTE COMPLETO	ROTATION DISK REGULATION	2
11	X02.030.010	GUARNIZIONE TAPPO DISTRIBUTORE	GASKET	2
12	X02.182.000	TAPPO 3/4" FEMMINA	FEMALE 3/4" CAP	2
13	XRP.006.000	RONDELLA PIANA D. 6	WASHER D.6	4
14	XTE.006.020T	VITE TE M6 x 20	SCREW TE M6 x 20	4
15	X02.077.010	RACCORDO A Y D.8-8-8	Y FITTING	1
16	X02.217.012	TUBO D. 8 x 13 L=120	HOSE D. 8 x 13 L=120	1
17	X02.217.012	TUBO D. 8 x 13 L=120	HOSE D. 8 x 13 L=120	1
18	XFC.013,5,015	FASCETTA COBRA SLO30710	KOBRA CLAMP	10
19	XFC.012,5,014	FASCETTA COBRA SLO30705	KOBRA CLAMP	8
20	X02.217.024	TUBO D.8x13 L=240	HOSE D.8x13 L=240	1
21	X02.217.024	TUBO D.8x13 L=240	HOSE D.8x13 L=240	1
22	X20.697.000	FERMA DIFFUSORE	NOZZLE STOP	5
23	X20.016.01C	RACCORDO ATTACCO RAPIDO PORTA TUBETTO	PIPE WITH OLIVE	5
24	X02.217.018	TUBO D.8x13 L=180	HOSE D.8x13 L=180	1
25	X02.217.018	TUBO D.8x13 L=180	HOSE D.8x13 L=180	1
26	X02.217.007	TUBO D.8x13 L=070	HOSE D.8x13 L=070	1
27	X02.217.018	TUBO D.8x13 L=180	HOSE D.8x13 L=180	1
28	X02.217.018	TUBO D.8x13 L=180	HOSE D.8x13 L=180	1
29	X00.008.050	DIFFUSORE 8/50	NOZZLE 8/50	2



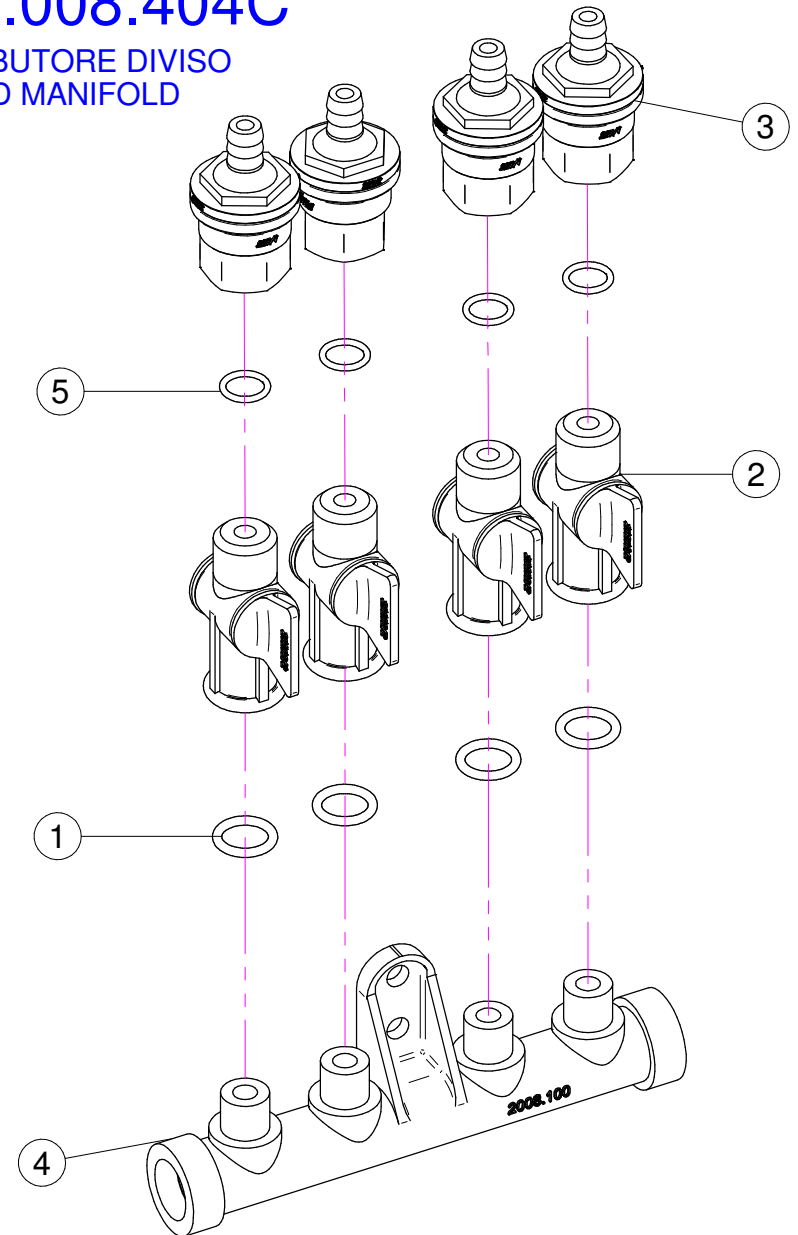
N°	Doc. Number	Titolo	Title	Q.tà	Note
1	X02.349.000	GUARNIZIONE PIANA D.17X23X3	17X23X3 FLAT GASKET	1	
2	X02.117.000	NIPPLO M14X1.5/D.17	ADAPTOR NIPPLE	1	
3	X00.055.045	GIRELLO 3/4" GAS	3/4" FLY NUT	1	
4	XDF.OTT.006	DADO AD ALETTE IN OTTONE M6	WING NUT M6	2	
5	XRP.006.000I	RONDELLA PIANA D. 6 INOX	INOX WASHER D.6	2	
6	XOR.002.062	OR D.15.6X1.78	D.15.6X1.78 OR	2	
7	X02.148.000	DISCO ROTANTE PER REGOLATORE	REGULATOR DISK	1	
8	XTE.006.030I	VITE TE M6X30 INOX	INOX M6X30 BOLT	2	
9	X02.147.500	COPPIA DI SEMICORPO REGOLATORE	REGULATOR HALF-BODY	1	
10	XOR.002.050	OR 12,43 x 1,78 NBR70	12,43 x 1,78 NBR70 O-RING GASKET	1	

X02.008.304C



X02.008.404C

DISTRIBUTORE DIVISO
DIVIDED MANIFOLD



X02.008.304C

N°	Doc. Number	Titolo	Title	Q.tà	Note
1	XOR.000.117	OR D. 13,1x18,34x2,62	13,1x18,34x2;62 O-RING GASKET	4	
2	X20.202.100	RUBINETTO P.G. D.10 F.1/4" GAS TAGLIATO	TAP ASSEMBLY	4	
3	X00.227.01C	DISPOSITIVO ANTIGOCCIA	ANTDRIP VALVE	4	
4	X02.008.000	DISTRIBUTORE LIQUIDO TESTATE	SPRAYHEADS LIQUID MANIFOLD	1	
5	XOR.002.043	OR 10.82X14.38X1.78 NBR70	10.82X14.38X1.78 NBR70 O-RING GASKET	4	

X02.008.404C

N°	Doc. Number	Titolo	Title	Q.tà	Note
1	XOR.000.117	OR D. 13,1x18,34x2,62	13,1x18,34x2;62 O-RING GASKET	4	
2	X20.202.100	RUBINETTO P.G. D.10 F.1/4" GAS TAGLIATO	TAP ASSEMBLY	4	
3	X00.227.01C	DISPOSITIVO ANTIGOCCIA	ANTDRIP VALVE	4	
4	X02.008.100	DISTRIBUTORE LIQUIDO TESTATE DIVISO	DIVIDED SPRAYHEADS LIQUID MANIFOLD	1	
5	XOR.002.043	OR 10.82X14.38X1.78 NBR70	10.82X14.38X1.78 NBR70 O-RING GASKET	4	