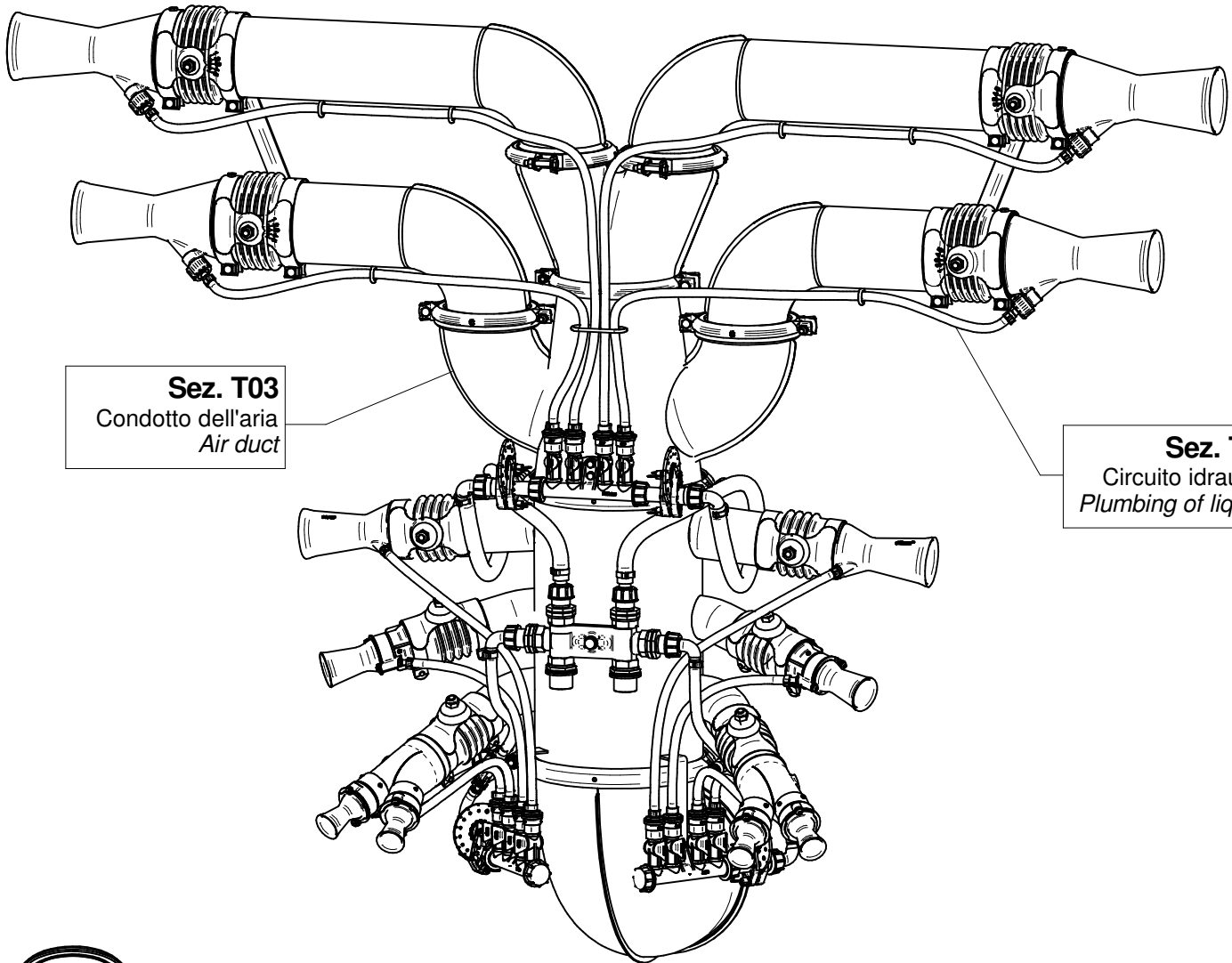
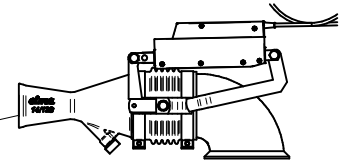


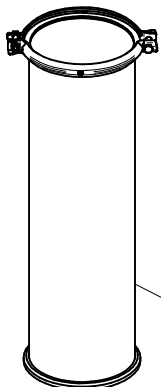
Sez. T24 (⌘)
Movimentazione Idraulica
Hydraulic Movement

Sez. T25 (⌘)
Movimentazione Elettrica
Electrical Movement

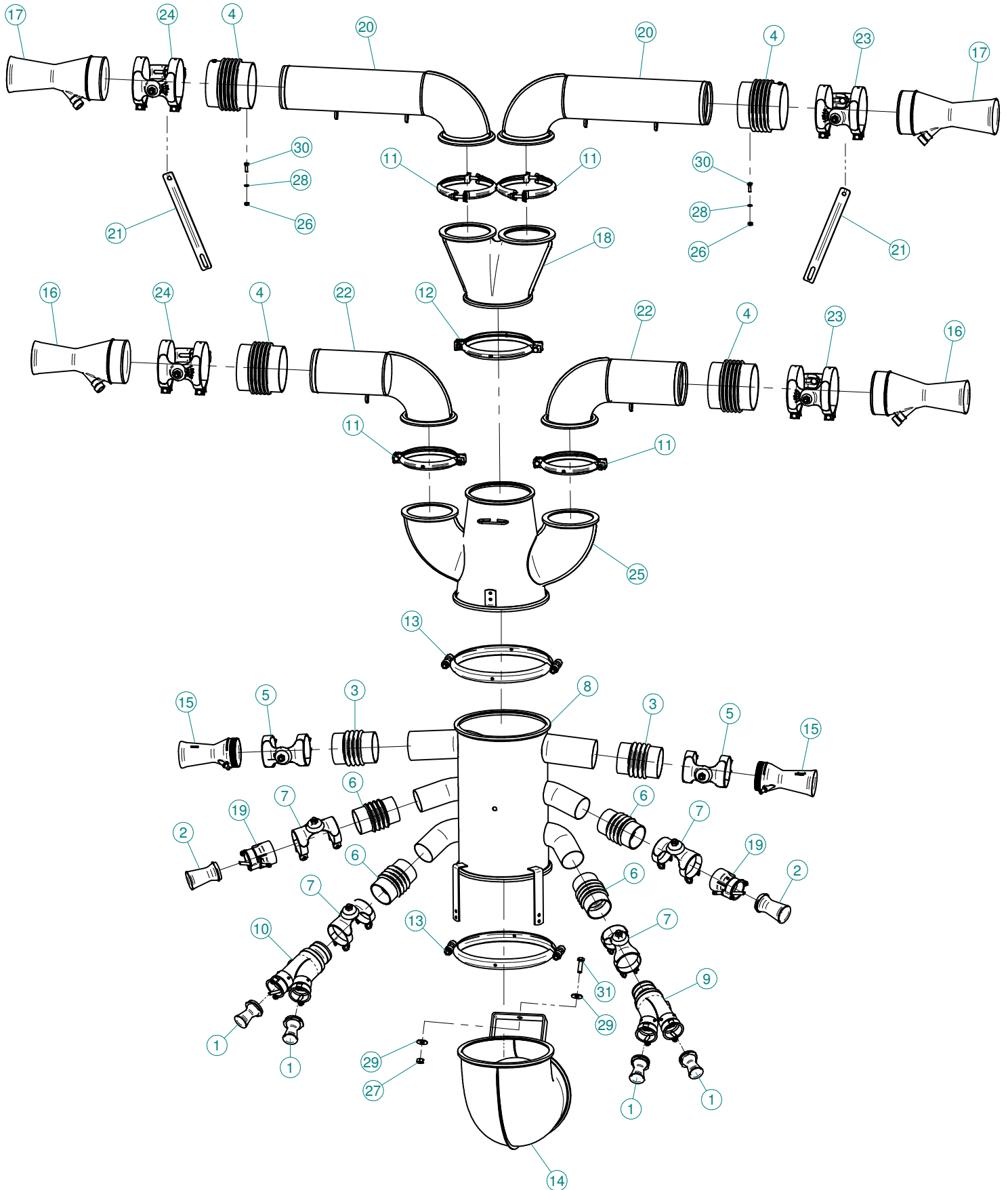


Sez. T03
Condotto dell'aria
Air duct

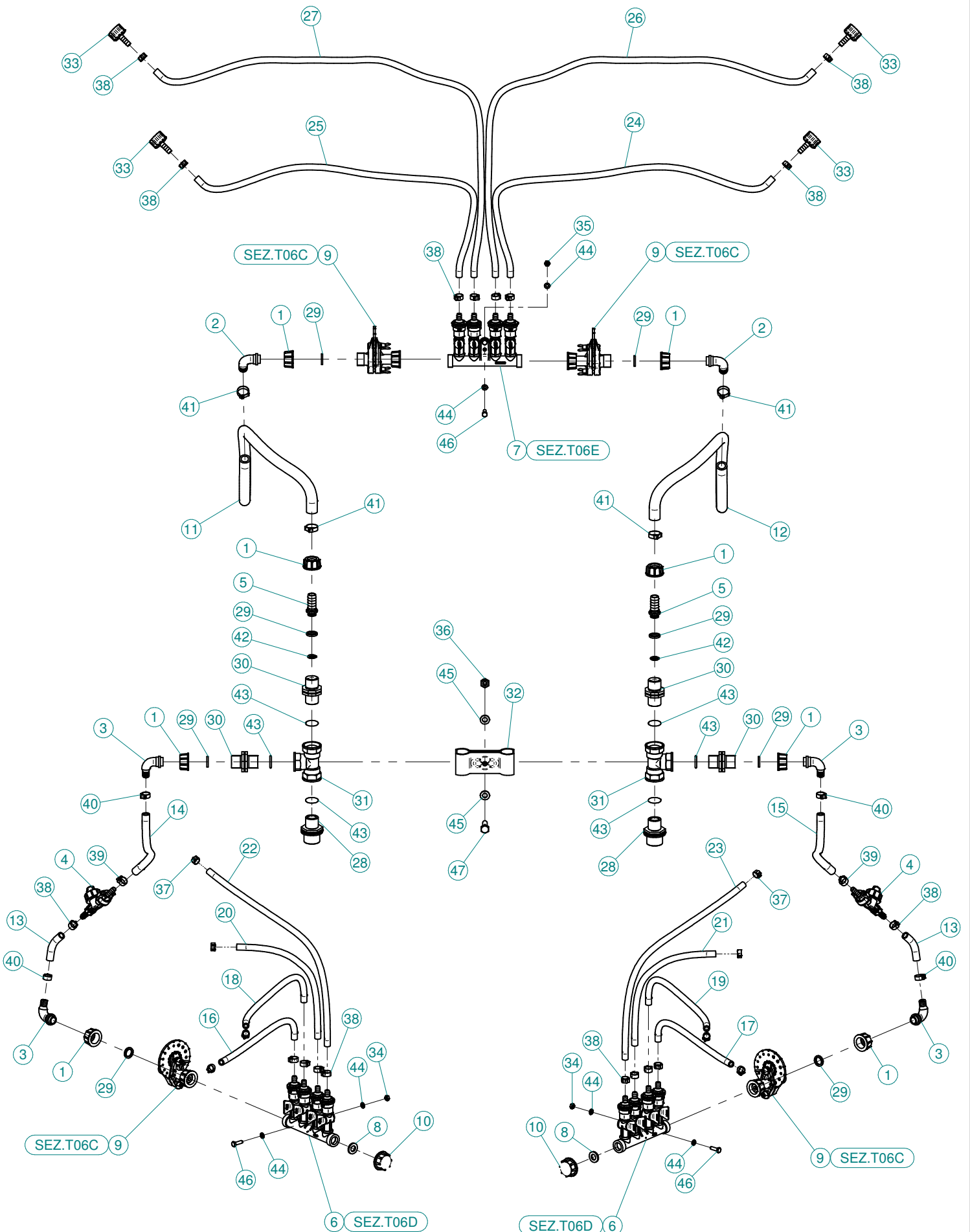
Sez. T06
Circuito idraulico
Plumbing of liquids



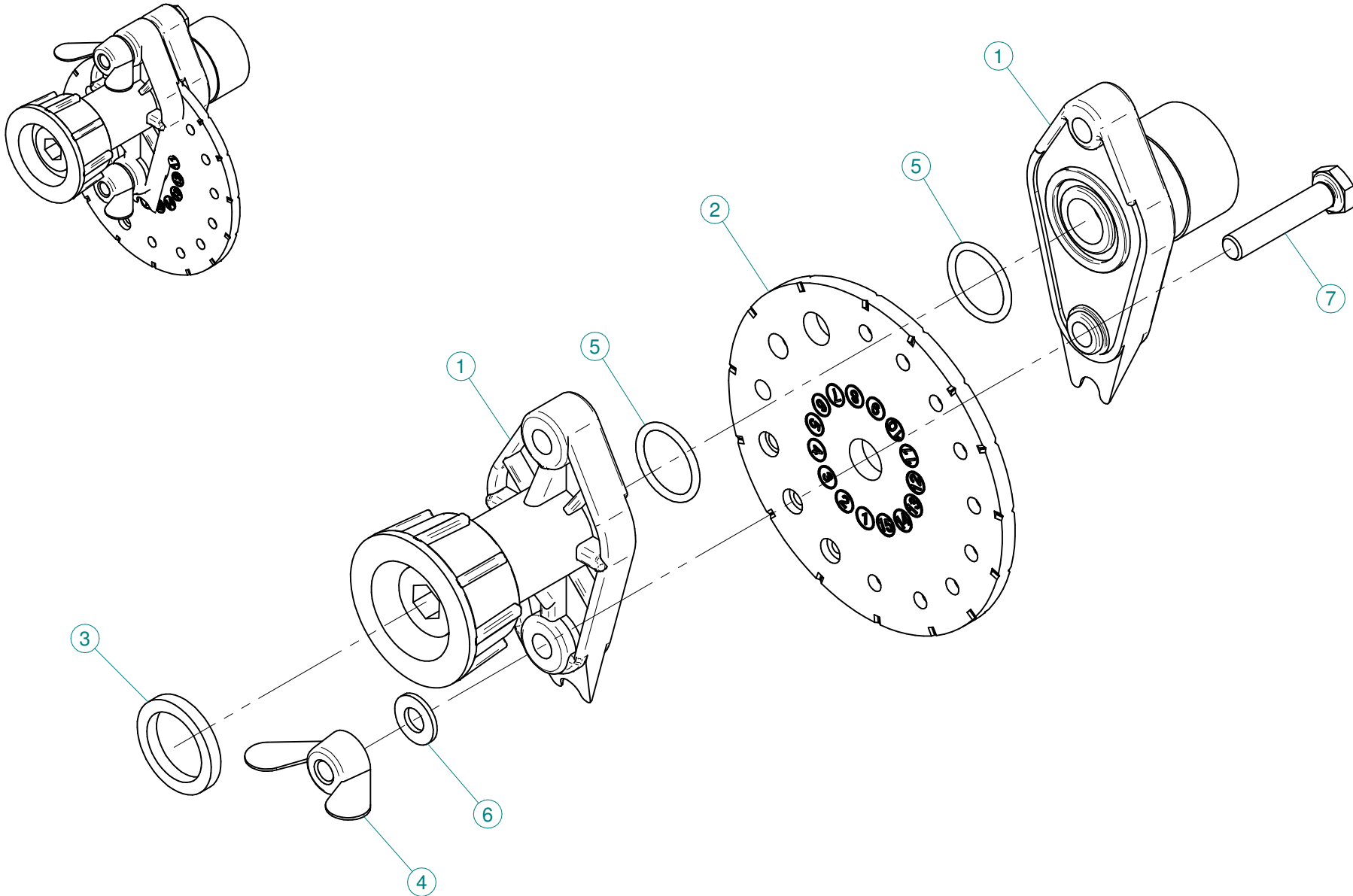
Sez. T28 (⌘)
Prolunghe
Extension



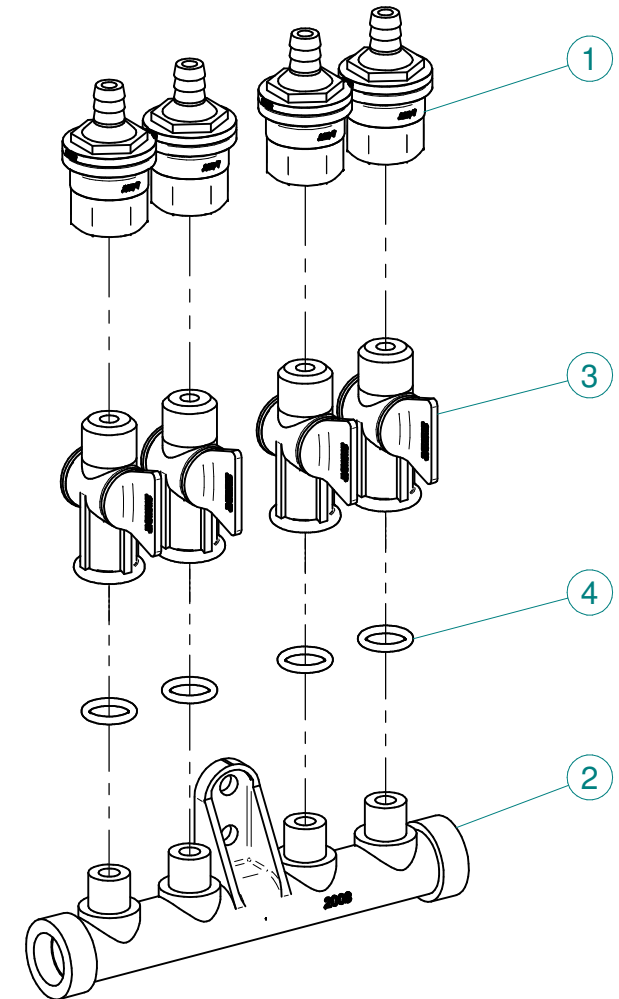
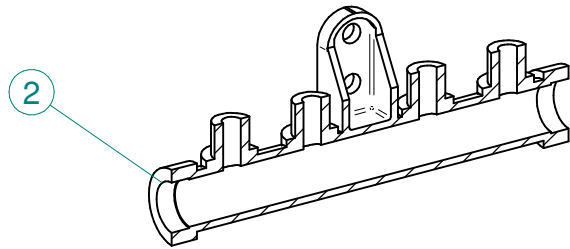
| N° | Doc. Number | Titolo | Title | Q.tà |
|----|----------------|---|---|------|
| 1 | X00.003,5.50 | DIFFUSORE 3,5/50 | NOZZLE 3,5/50 | 4 |
| 2 | X00.008.050 | DIFFUSORE 8/50 | NOZZLE 8/50 | 2 |
| 3 | X02.020.000 | MANICOTTO FLESSIBILE Ø 80 x 115 | FLEXIBLE SLEEVE Ø 80 x 115 | 2 |
| 4 | X02.021.000 | MANICOTTO FLESSIBILE D.120X120 | 120 D. FLEXIBLE SLEEVE | 4 |
| 5 | X02.046.000 | COPPIA FASCETTE Ø 85 | CLAMP Ø 85 | 2 |
| 6 | X02.700.000 | MANICOTTO FLESSIBILE D.65 x 115 | FLEXIBLE SLEEVE | 4 |
| 7 | X02.710.000 | COPPIA FASCETTE ORIENTABILI D.72 x 120 | PAIR OF D.72 x 120 SWINGING CLAMPS | 4 |
| 8 | X02.940.000 | CORPO INFERIORE TESTATA PATATE | POTATOES HEAD LOWER BODY | 1 |
| 9 | X02.968.100CDX | MANO Ø 80 A DUE USCITE CON TUBETTI | TWO OUTLETS BODY | 1 |
| 10 | X02.968.100CSX | MANO Ø 80 A DUE USCITE CON TUBETTI | TWO OUTLETS BODY | 1 |
| 11 | X04.027.000 | COLLARE PER TUBI D. 150 | PIPE CLAMP D. 150 | 4 |
| 12 | X05.616.000 | COLLARE PER TUBI Ø 175 | PIPE CLAMP Ø 175 | 1 |
| 13 | X05.813.000 | COLLARE Ø275 | CLAMP Ø275 | 2 |
| 14 | X05.822.000 | CURVA Ø250 A 90° | ELBOW Ø250 90° | 1 |
| 15 | X10.014.080 | DIFFUSORE 14/80 CON TUBETTO | NOZZLE 14/80 | 2 |
| 16 | X10.022,5.120 | DIFFUSORE 22,5/120 CON TUBETTO | NOZZLE 22,5/120 | 2 |
| 17 | X10.027.120 | DIFFUSORE 27/120 CON TUBETTO | NOZZLE 27/120 | 2 |
| 18 | X20.204.000 | CORPO D.175 CON 2 USCITE D.130 | BODY D.175 WITH 2 OUTLETS D.130 | 1 |
| 19 | X20.487.100C | RIDUZIONE D.65/D.55 CON TUBETTO IN OTTONE | COMPLETE REDUCTION D.65/D.55 (BRASS PIPE) | 2 |
| 20 | X20.644.102 | CURVA D.120 L=520 PER TC | ELBOW D.120 L=520 PER TC | 2 |
| 21 | X20.666.000 | STAFFA COLLEGAMENTO DIFFUSORI | NOZZLES UNION BRACKET | 2 |
| 22 | X20.675.000 | CURVA D.120 L=330 PER TC | ELBOW D.120 L=330 PER TC | 2 |
| 23 | X21.080.000 | COPPIA FASCETTE Ø 127 DESTRA | RIGHT CLAMP Ø 127 | 2 |
| 24 | X21.081.000 | COPPIA FASCETTE Ø 127 SINISTRA | LEFT CLAMP Ø 127 | 2 |
| 25 | X50.078.000 | CORPO D.250-175 CON DUE USCITE D.130 | BODY D.250-175 WITH 2 OUTLETS D.130 | 1 |
| 26 | XD0.06.5588G | DADO M6 6S PG 5588 ZINC. | M6 6S BIG LEAD NUT 5588 | 4 |
| 27 | XD0.10.5587G | DADO M10 6S PG 5587 ZINC. | M10 6S BIG LEAD NUT 5587 | 1 |
| 28 | XRP.006.000 | RONDELLA PIANA D.6 6592 ZINC. | 6mm D. FLAT WASHER | 4 |
| 29 | XRP.010.030 | RONDELLA PIANA F.LARGA D.10X30 ZINC. | 10X30mm D. LARGE THREAD FLAT | 2 |
| 30 | XTE.006.020T | VITE TE M6X20 5739 ZINC. | BOLT TE M6X20 5739 | 4 |
| 31 | XTE.010.035T | VITE TE UNI 5739-65 M10x35-8.8 | SCREW TE UNI 5739-65 M10x35-8.8 | 1 |



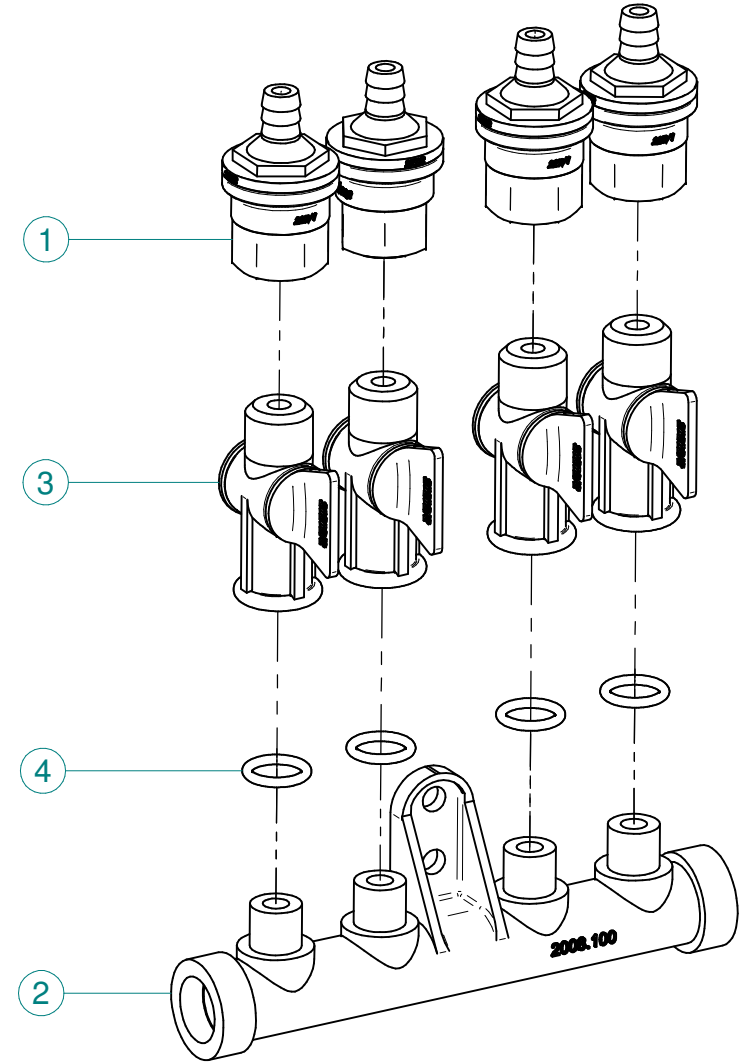
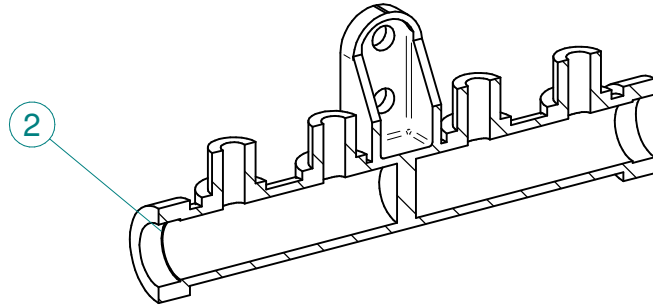
| N° | Doc. Number | Titolo | Title | Q.tà |
|----|---------------|---|--|------|
| 1 | X00.055.045 | GIRELLO 3/4" GAS ALTO | 3/4" GAS FLY NUT | 8 |
| 2 | X00.055.046 | RACCORDO CURVO P.G. Ø16 | CURVED UNION WITH R.H. Ø16 | 2 |
| 3 | X00.055.046R | RACCORDO CURVO P.G. Ø 14 | CURVED UNION WITH R.H. D.14 | 4 |
| 4 | X00.226.05C | GETTO ANTIGOCCIA DIRITTO COMPLETO (0,3 bar) | COMPLETE ANTIDROP (0,3 bar) | 2 |
| 5 | X02.002.000 | RACCORDO DIRITTO 3/4" P.G.16 | STRAIGHT UNION 3/4" R.H.16 | 2 |
| 6 | X02.008.304C | DISTRIBUTORE LIQUIDI A 4 RUBINETTI CON ANTIGOCCIA | FOUR TAPS LIQUID DISTRIBUTOR WITH ANTI-DRIP DEVICE | 2 |
| 7 | X02.008.404C | DISTRIBUTORE LIQUIDI A 4 RUBINETTI | 4 TAPS LIQUID MANIFOLD | 1 |
| 8 | X02.030.010 | GUARNIZIONE IN GOMMA D.24X13X3 | GASKET D.24X13X3 | 2 |
| 9 | X02.150.000 | REGOLATORE A DISCO ROTANTE COMPLETO | ROTATION DISK REGULATION | 4 |
| 10 | X02.182.000 | TAPPO 3/4" F. | FEMALE 3/4" CAP | 2 |
| 11 | X02.211.075 | TUBO Ø16x23 L=750 | HOSE Ø16x23 L=750 | 1 |
| 12 | X02.211.075 | TUBO Ø16x23 L=750 | HOSE Ø16x23 L=750 | 1 |
| 13 | X02.213.007 | TUBO Ø10x16 L=70 | HOSE Ø10x16 L=70 | 2 |
| 14 | X02.213.030 | TUBO Ø10x16 L=300 | HOSE Ø10x16 L=300 | 1 |
| 15 | X02.213.030 | TUBO Ø10x16 L=300 | HOSE Ø10x16 L=300 | 1 |
| 16 | X02.217.030 | TUBO Ø8x13 L=300 | HOSE Ø8x13 L=300 | 1 |
| 17 | X02.217.030 | TUBO Ø8x13 L=300 | HOSE Ø8x13 L=300 | 1 |
| 18 | X02.217.033 | TUBO Ø8x13 L=330 | HOSE Ø8x13 L=330 | 1 |
| 19 | X02.217.033 | TUBO Ø8x13 L=330 | HOSE Ø8x13 L=330 | 1 |
| 20 | X02.217.039 | TUBO Ø8x13 L=390 | HOSE Ø8x13 L=390 | 1 |
| 21 | X02.217.039 | TUBO Ø8x13 L=390 | HOSE Ø8x13 L=390 | 1 |
| 22 | X02.217.055 | TUBO Ø8x13 L=550 | TUBO Ø8x13 L=550 | 1 |
| 23 | X02.217.055 | TUBO Ø8x13 L=550 | TUBO Ø8x13 L=550 | 1 |
| 24 | X02.217.080 | TUBO Ø8x13 L=800 | HOSE Ø8x13 L=800 | 1 |
| 25 | X02.217.080 | TUBO Ø8x13 L=800 | HOSE Ø8x13 L=800 | 1 |
| 26 | X02.217.150 | TUBO Ø8x13 L=1500 | HOSE Ø8x13 L=1500 | 1 |
| 27 | X02.217.150 | TUBO Ø8x13 L=1500 | HOSE Ø8x13 L=1500 | 1 |
| 28 | X02.293.000 | RIDUZIONE 1" M - 3/4" M | 1" M - 3/4" M REDUCER NIPPLE | 2 |
| 29 | X02.349.000 | GUARNIZIONE PIANA D.17X23X3 | 17X23X3 FLAT GASKET (G4000B) | 8 |
| 30 | X02.380.000 | NIPPLO 3/4" | NIPPLE 3/4" | 4 |
| 31 | X02.396.000 | RACCORDO A T 3/4" - 3/4" - 3/4" F. | UNION 3/4" - 3/4" - 3/4" F. | 2 |
| 32 | X02.999.000 | STAFFA FISSAGGIO RACCORDO A T | T UNION FIXING BRACKET | 1 |
| 33 | X21.010.000 | RACCORDO P.G. DIRITTO Ø 10 COMPLETO | COMPLETE R.H. Ø 10 UNION | 4 |
| 34 | XD0.06.5588G | DADO M6 | NUT M6 | 4 |
| 35 | XD0.06.5588G | DADO M6 6S PG 5588 ZINC. | M6 6S BIG LEAD NUT 5588 | 2 |
| 36 | XDA.010.0BG | DADO AUTOBLOCCANTE M10 | SELF LOCKING NUT M10 | 1 |
| 37 | XFC.012,5.014 | FASCETTA COBRA SL030705 | KOBRA CLAMP SL030705 | 8 |
| 38 | XFC.013,5.015 | FASCETTA COBRA SL030710 | KOBRA CLAMP SL030710 | 18 |
| 39 | XFC.015,5.017 | FASCETTA COBRA SLO30720 | KOBRA CLAMP | 2 |
| 40 | XFC.016,5.018 | FASCETTA COBRA 16,5 - 18 | KOBRA CLAMP 16,5 - 18 | 4 |
| 41 | XFC.022,5.024 | FASCETTA COBRA SLO30756 | KOBRA CLAMP SLO30756 | 4 |
| 42 | XOR.000.117 | OR D.13,1X2,62 | 13.1X2.62 O-RING GASKET | 2 |
| 43 | XOR.004.081 | OR Ø 20,22 x 3,53 | 20,22 x 3,53 O-RING GASKET | 6 |
| 44 | XRP.006.000 | RONDELLA PIANA D.6 6592 ZINC. | 6mm D. FLAT WASHER | 12 |
| 45 | XRP.010.000 | RONDELLA PIANA D.10 6592 ZINC. | WASHER Ø 10 | 2 |
| 46 | XTE.006.020T | VITE TE M6X20 5739 ZINC. | BOLT TE M6X20 5739 | 6 |
| 47 | XTE.010.035T | VITE TE UNI 5739-65 M10x35-8.8 | SCREW TE UNI 5739-65 M10x35-8.8 | 1 |



| N° | Doc. Number | Titolo | Title | Q.tà |
|----|--------------|--------------------------------|------------------------------------|------|
| 1 | X02.147.500 | COPPIA DI SEMICORPO REGOLATORE | REGULATOR HALF-BODY | 1 |
| 2 | X02.148.000 | DISCO ROTANTE PER REGOLATORE | REGULATOR DISK | 1 |
| 3 | X02.349.000 | GUARNIZIONE PIANA D.17X23X3 | 17X23X3 FLAT GASKET (G4000B) | 1 |
| 4 | XDF.OTT.006 | DADO AD ALETTE IN OTTONE M6 | BRASS M6 WING NUT | 2 |
| 5 | XOR.002.062 | OR D.15,6X1,78 | 15.6X1.78 O-RING GASKET | 2 |
| 6 | XRP.006.001 | RONDELLA PIANA D.6 INOX | WASHER D.6 | 2 |
| 7 | XTE.006.030I | VITE TE M6X30 INOX 5739 | BOLT TE M6X30 STAINLESS STEEL 5739 | 2 |



| N° | Doc. Number | Titolo | Title | Q.tà |
|----|-------------|------------------------------|-------------------------------|------|
| 1 | X00.227.01C | DISPOSITIVO ANTIGOCCIA | ANTI DRIP DEVICE | 4 |
| 2 | X02.008.000 | DISTRIBUTORE LIQUIDO TESTATE | SPRAYHEADS LIQUID DISTRIBUTOR | 1 |
| 3 | X20.202.100 | RUBINETTO F.1/4" M.18X1,5 | TAP ASSEMBLY | 4 |
| 4 | XOR.000.117 | OR D.13,1X2,62 | 13.1X2.62 O-RING GASKET | 4 |



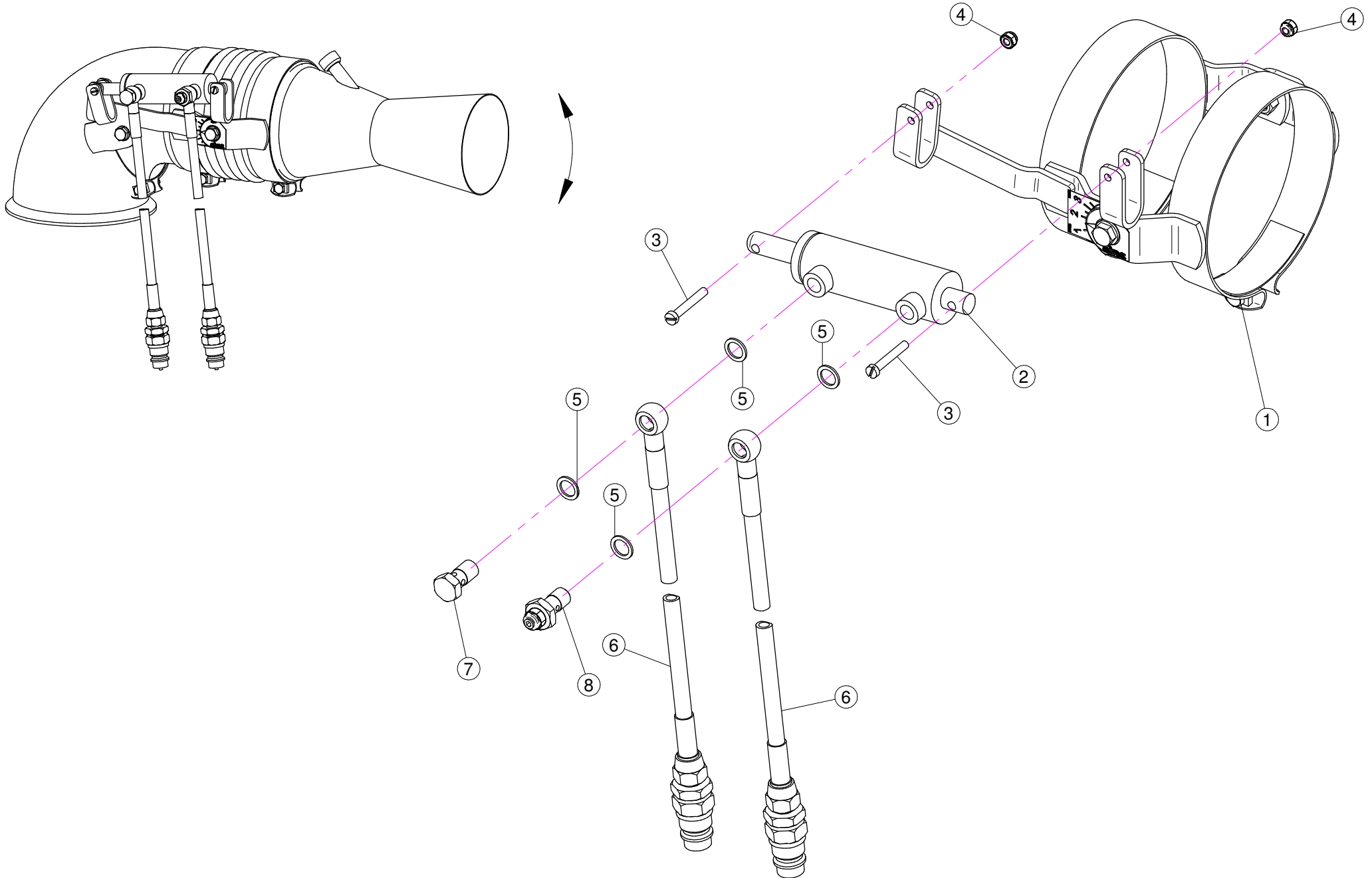
| N° | Doc. Number | Titolo | Title | Q.tà |
|----|-------------|-------------------------------------|------------------------------|------|
| 1 | X00.227.01C | DISPOSITIVO ANTIGOCCIA | ANTI DRIP DEVICE | 4 |
| 2 | X02.008.100 | DISTRIBUTORE LIQUIDO TESTATE DIVISO | SPRAYHEAD LIQUID DISTRIBUTOR | 1 |
| 3 | X20.202.100 | RUBINETTO F.1/4" M.18X1,5 | TAP ASSEMBLY | 4 |
| 4 | XOR.000.117 | OR D.13,1X2,62 | 13.1X2.62 O-RING GASKET | 4 |

Gli esplosi elencati di seguito sono relativi
a varianti o accessori a richiesta

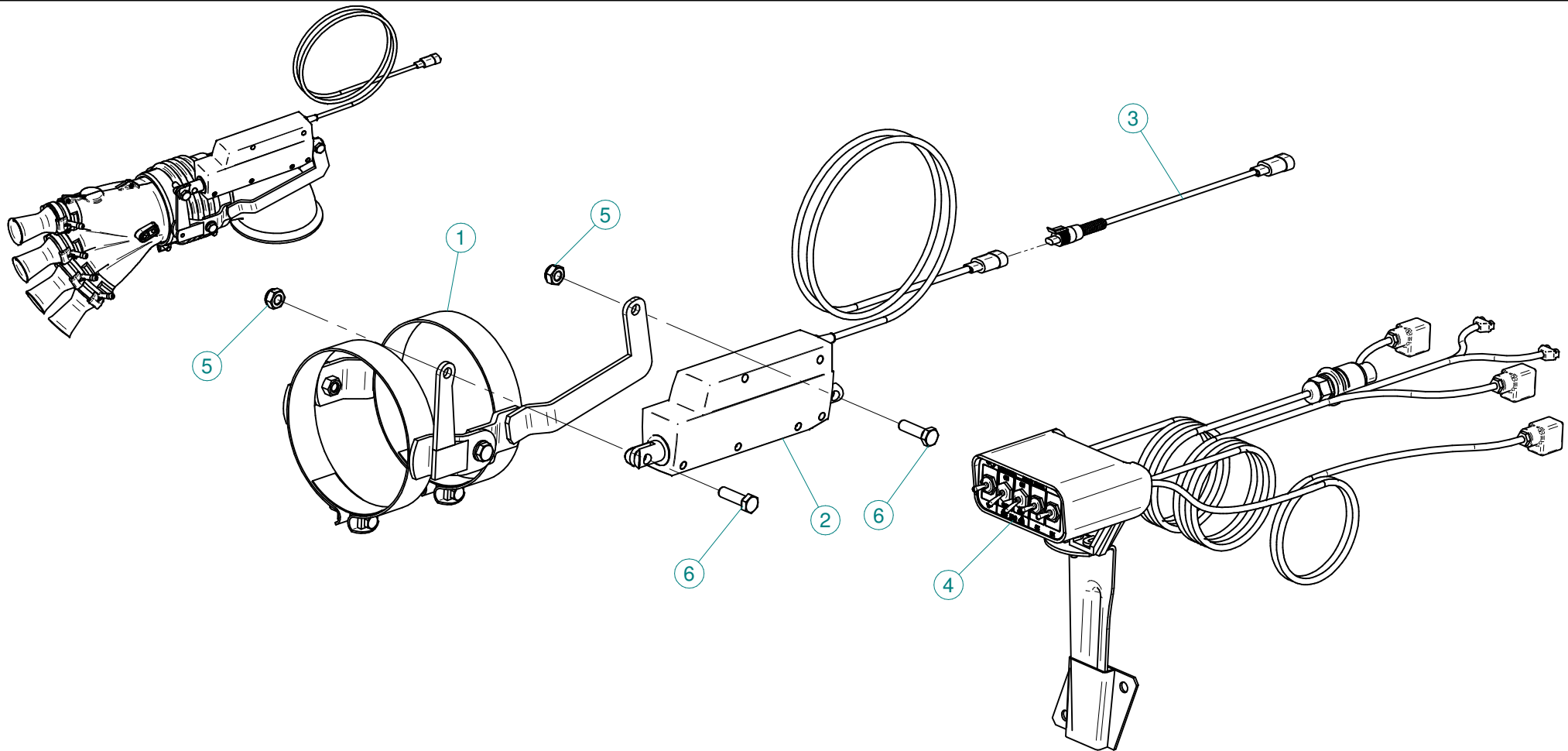
The exploded drawings listed below are related
to different versions or optional accessories

Le vues éclatées suivantes sont relatives
à des variantes ou à des accessoires optionnels

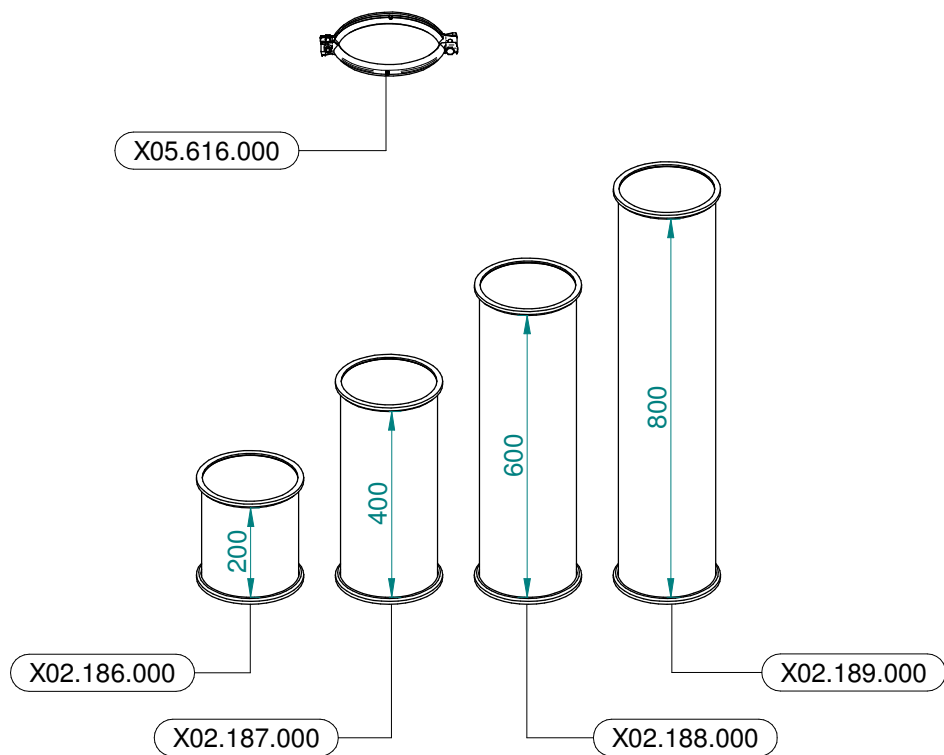
Dibujos de vista despiezada son relativos a
variantes o accesorios opcionales



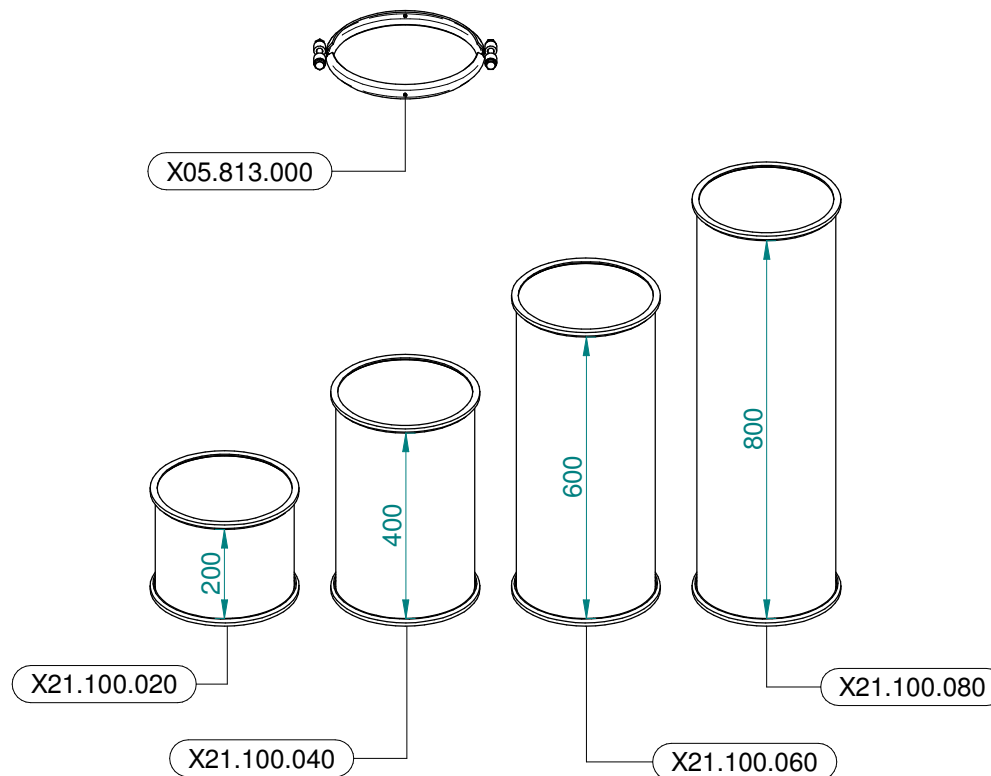
| N° | Doc. Number | Titolo | Title | Q.tà | Note |
|----|---------------|---|-------------------------------|------|------|
| 1 | X02.807.200 | COPPIA FASCETTE SNODATE D.150 CON ATTACCO PISTONE | CLAMP D.150 WITH JACK BRACKET | 2 | |
| 2 | X02.840.04C | MARTINETTO COMPLETO D.20/30 CORSA 60 | JACK | 2 | |
| 3 | XTC.06.40.07I | VITE T.CIL. M6 x 40 INOX | INOX SCREW M6 x 40 | 4 | |
| 4 | XDA.006.0AG | DADO AUTOBLOCCANTE M6 ALTO PG | SELF-LOCKING NUT - HIGH M6 | 4 | |
| 5 | X02.472.000 | RONDELLA DI RAME | COPPER WASHER | 8 | |
| 6 | X20.900.680 | TUBO OLIO PER MARTINETTO L=6800 | OIL PIPE FOR JACK L=6800 | 4 | |
| 7 | X02.408.000 | RACCORDO DRITTO PER OCCHIO | JACK EYE RIGHT UNION | 2 | |
| 8 | X20.718.000 | REGOLATORE PORTATA IDRAULICA | FLOW REGULATOR | 2 | |



| N° | Doc. Number | Titolo | Title | Q.tà |
|----|--------------|---|--------------------------------------|------|
| 1 | X02.807.400 | COPPIA FASCETTE SNODATE D.150 CON ATTACCO ATTUATORE | CLAMP D.150 WITH ACTUATOR BRACKET | 2 |
| 2 | X21.016.000 | ATTUATORE LINEARE (LA 12.1) | LINEAR ACTUATOR (LA 12.1) | 2 |
| 3 | X21.474.000 | CAVO L=2000 mm COLLEGAMENTO ATTUATORI ELETTRICI | CABLE L=2000 mm ACTUATORS CONNECTION | 2 |
| 4 | X21.530.200 | KIT COMANDO ELETTRICO PER PLUS LINK | CONTROL BOX ASSEMBLY FOR PLUS - LINK | 1 |
| 5 | XDA.010.0BG | DADO AUTOBLOCCANTE M10 | SELF LOCKING NUT M10 | 4 |
| 6 | XTE.010.035T | VITE TE UNI 5739-65 M10x35-8.8 | SCREW TE UNI 5739-65 M10x35-8.8 | 4 |



Ø 175
 Plus 42 - 45 - 50
 Blitz 45 - 50
 Link 50



Ø 250
 Plus 55
 Blitz 55
 Link 55