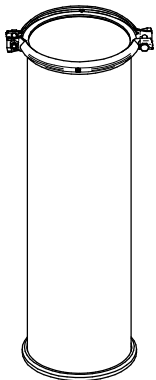


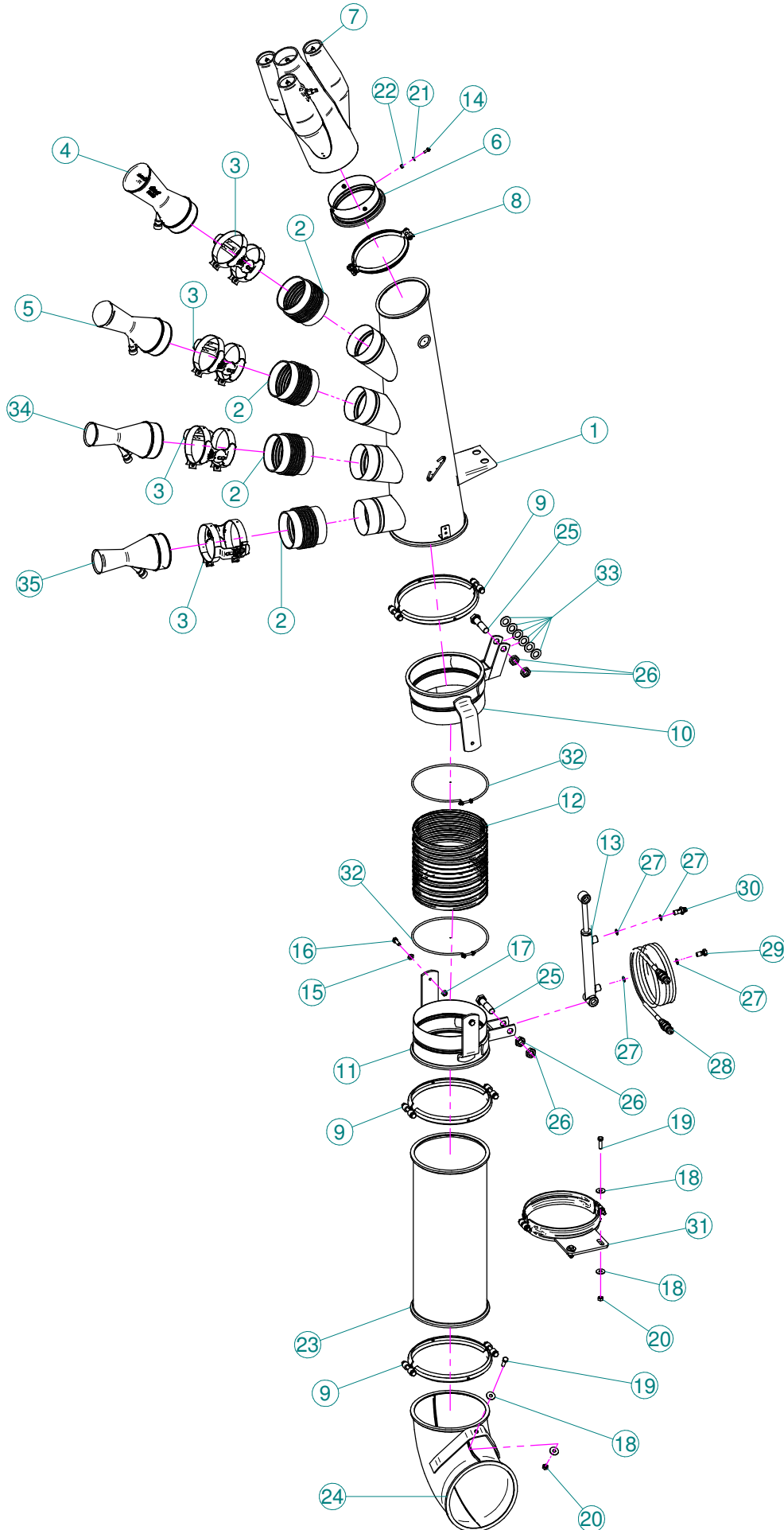
Sez. T03
Condotto dell'aria
Air duct

Sez. T06
Circuito idraulico
Plumbing of liquids

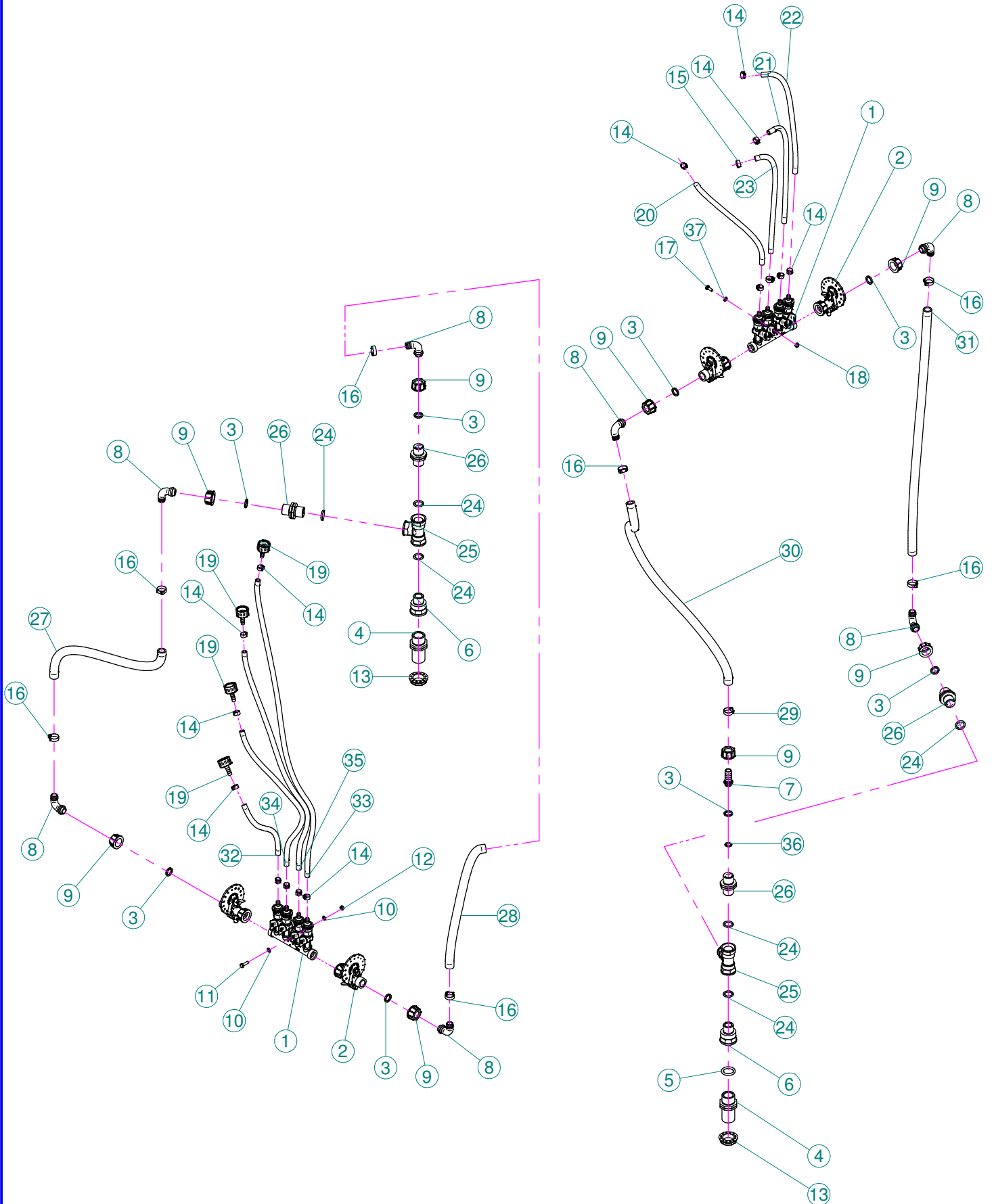


Sez. T28 (☒)
Prolunghe
Extension

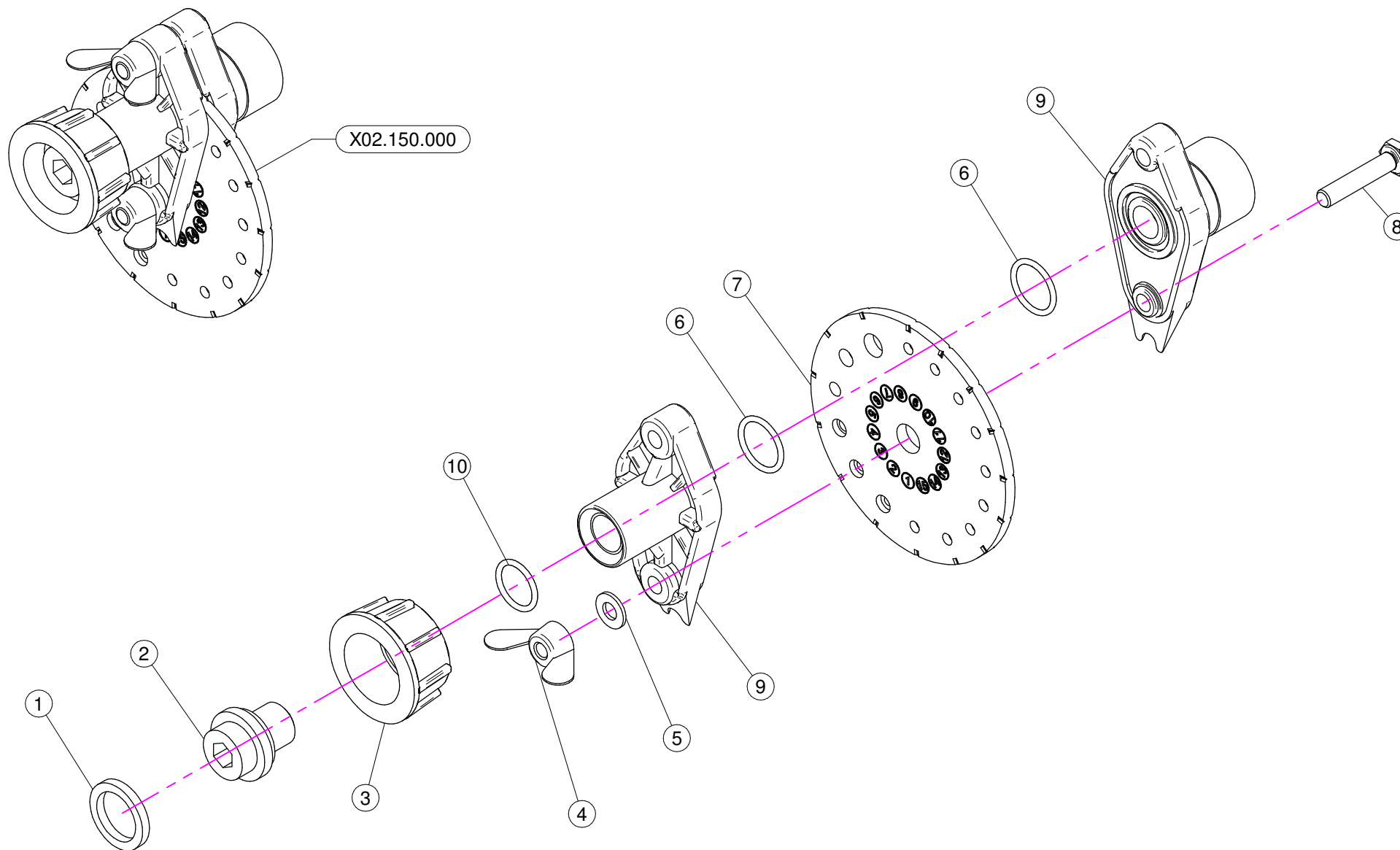
(☒) A richiesta / Optional Devices



N°	Doc. Number	Titolo	Title	Q.tà
1	X05.961.100	CORPO GETTO CANNONE VERTICALE	VERTICAL CANNON BODY	1
2	X02.021.000	MANICOTTO FLESSIBILE D.120	FLEXIBLE SLEEVE	4
3	X21.080.000	COPPIA FASCETTE Ø 127 DESTRA	RIGHT CLAMP Ø 127	4
4	X10.037.120	DIFFUSORE 37/120 CON TUBETTO	NOZZLE 37/120	1
5	X10.022.5.120	DIFFUSORE 22,5/120 CON TUBETTO	NOZZLE 22,5/120	1
6	X50.217.000	IMBOCCO PER DIFFUSORE MULTIPO	MULTIPLE NOZZLE LEAD-IN	1
7	X00.130.180C	DIFFUSORE MULTIPO 130/180 COMPLETO	COMPLETE NOZZLE 130/180	1
8	X05.616.000	COLLARE PER TUBI D.175	PIPE CLAMP D.175	1
9	X05.813.000	COLLARE D.275	CLAMP D.275	3
10	X50.031.003	SEMIFASCETTA FEMMINA	FEMALE SEMICLAMP	1
11	X50.031.001	SEMIFASCETTA MASCHIO	MALE SEMICLAMP	1
12	X02.314.025	TUBO IN POLIURETANO D.250 L=250	POLIURETAN HOSE D.250 L=250	1
13	X02.838.02C	MARTINETTO LATERALE COMPLETO	COMPLETE SIDE JACK	1
14	XTCC.06.16	VITE TESTA A CROCE M6x16	CROSS SLOTTED SCREW M6x16	4
15	XRP.010.000	RONDELLA PIANA D.10	WASHER D.10	2
16	XTE.010.030T	VITE TE M10 x 30	SCREW TE M10 x 30	2
17	XD0.10.5587G	DADO M10	NUT M10	2
18	XRP.010.030	RONDELLA PIANA D.10 x 30 mm	WASHER D.10 x 30 mm	6
19	XTE.010.035T	VITE TE 10 x 35	SCREW TE 10 x 35	3
20	XD0.10.5587G	DADO M10	NUT M10	3
21	XRP.006.000	RONDELLA PIANA D. 6	WASHER D.6	4
22	XD0.06.5588G	DADO M6	NUT M6	4
23	X21.100.060	PROLUNGA D.250 x 600	EXTENSION D.250 x 600	1
24	X05.822.000	CURVA D.250 A 90°	ELBOW D.250 90°	1
25	XTE.020.080	VITE TE M20 x 80	SCREW TE M20 x 80	2
26	XD0.20.5589G	DADO BASSO M20	LOWER NUT M20	4
27	X02.472.000	RONDELLA DI RAME	COPPER WASHER	4
28	X20.900.680	TUBO OLIO PER MARTINETTO L=6800	OIL PIPE FOR JACK L=6800	2
29	X02.408.000	RACCORDO DRITTO PER OCCHIO	JACK EYE RIGHT UNION	1
30	X20.718.000	REGOLATORE PORTATA IDRAULICA	FLOW REGULATOR	1
31	X20.504.000	FASCETTA D.250 FISSAGGIO TESTATE	D.250 CLAMP HEADS FIXING	1
32	XF0.250.000	FASCETTA UNIFILO D.250	CLAMP D.250	2
33	XRP.020.000	RONDELLA PIANA D.20	WASHER D.20	6
34	X10.014.120	DIFFUSORE 14/120	CANNON 14/120	1
35	X10.018.120	DIFFUSORE 18/120 CON TUBETTO	NOZZLE 18/120	1

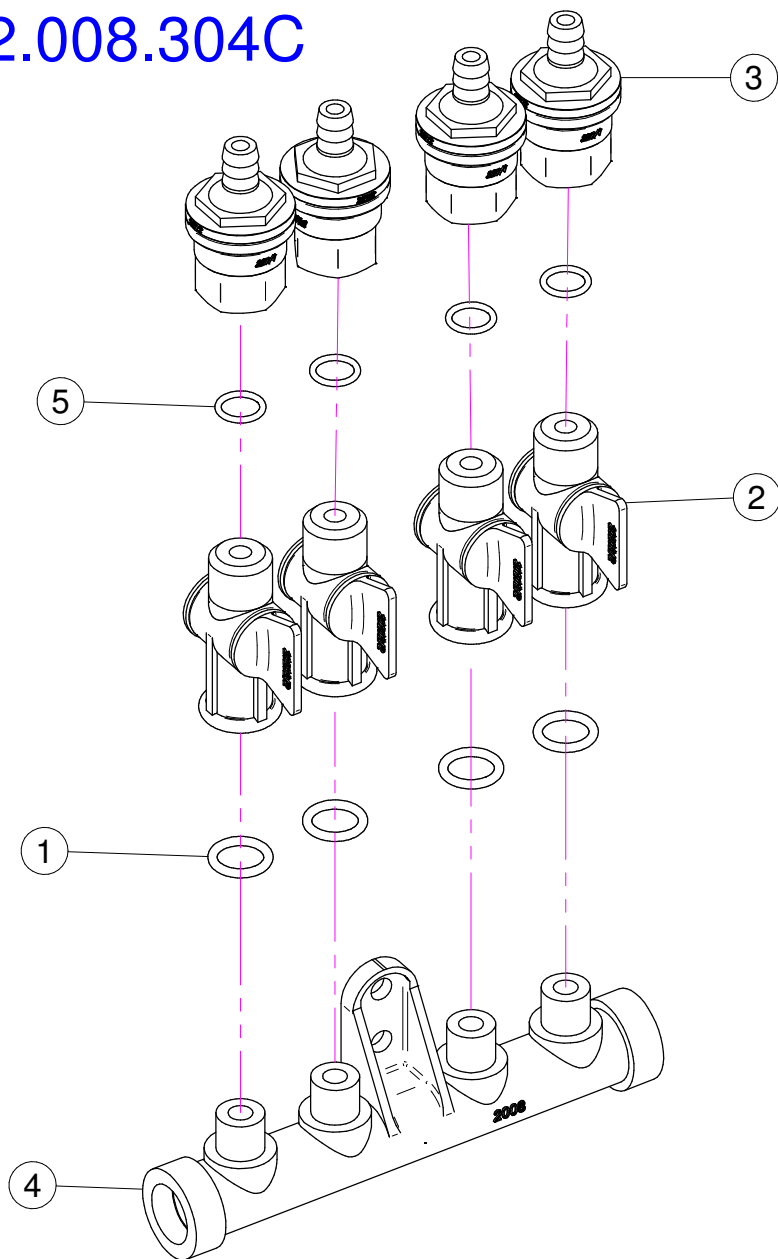


N°	Doc. Number	Titolo	Title	Q.tà
1	X02.008.304C	DISTRIBUTORE LIQUIDI A 4 RUBINETTI	4 TAPS LIQUID MANIFOLD	2
2	X02.150.000	REGOLATORE A DISCO ROTANTE COMPLETO	ROTATION DISK REGULATION	4
3	X02.349.000	GUARNIZIONE PIANA D.17X23X3	17X23X3 FLAT GASKET	8
4	X00.055.034.L	NIPPLO 1" / 1" GAS FILETTO LUNGO	LONG NIPPLE 1" / 1" GAS	2
5	XOR.000.507	OR D.27 x 5	27 x 5 O-RING GASKET	2
6	X02.294.000	RIDUZIONE 3/4" M - 1" F.	3/4" M - 1" F. REDUCTION	2
7	X02.002.000	RACCORDO DIRITTO 3/4" P.G.18	STRAIGHT UNION 3/4" R.H.18	1
8	X00.055.046	RACCORDO CURVO P.G. D.17	CURVED UNION WITH R.H. D.17	7
9	X00.055.045	GIRELLO 3/4" GAS	3/4" FLY NUT	8
10	XRP.006.000	RONDELLA PIANA D. 6	WASHER D.6	4
11	XTE.006.020T	VITE TE M6 x 20	SCREW TE M6 x 20	2
12	XD0.06.5588G	DADO M6	NUT M6	2
13	X00.542.000	GHIERA 1"	NUT 1"	2
14	XFC.013,5.015	FASCETTA COBRA SLO30710	KOBRA CLAMP	14
15	XFC.015,5.017	FASCETTA COBRA SLO30720	KOBRA CLAMP	2
16	XFC.024,5.026	FASCETTA COBRA 24,5 - 26	KOBRA CLAMP 24,5 - 26	7
17	XTCC.06.16	VITE TESTA A CROCE M6x16	CROSS SLOTTED SCREW M6x16	2
18	XDOT.06.5587	DADO OTTONE M6	M6 BRASS NUT 5587	2
19	X21.010.000	RACCORDO P.G. DIRITTO D.10 COMPLETO	COMPLETE R.H. D.10 UNION	4
20	X02.217.035	TUBO D. 8 x 13 L=350	HOSE D. 8 x 13 L=350	1
21	X02.217.030	TUBO D. 8 x 13 L=300	HOSE D. 8 x 13 L=300	1
22	X02.217.032	TUBO D. 8 x 13 L=320	HOSE D. 8 x 13 L=320	1
23	X02.217.032	TUBO D.8x13 L=320	HOSE D.8x13 L=320	1
24	XOR.004.081	OR D.20,22 x 3,53	20,22 x 3,53 O-RING GASKET	6
25	X02.396.000	RACCORDO A T 3/4" - 3/4" - 3/4" F.	UNION 3/4" - 3/4" - 3/4" F.	2
26	X02.380.000	NIPPLO 3/4"	NIPPLE 3/4"	4
27	X02.211.046	TUBO D.16x23 L=460	HOSE D.16x23 L=460	1
28	X02.211.042	TUBO D.16x23 L=420	HOSE D.16x23 L=420	1
29	XFC.022,5.024	FASCETTA COBRA 22,5 - 24	KOBRA CLAMP 22,5 - 24	1
30	X02.211.075	TUBO D.16x23 L=750	HOSE D.16x23 L=750	1
31	X02.211.072	TUBO D.16x23 L=720	HOSE D.16x23 L=720	1
32	X02.217.054	TUBO D.8x13 L=540	HOSE D.8x13 L=540	1
33	X02.217.082	TUBO D.8x13 L=820	HOSE D.8x13 L=820	1
34	X02.217.055	TUBO D.8x13 L=550	HOSE D.8x13 L=550	1
35	X02.217.064	TUBO D.8x13 L=640	HOSE D.8x13 L=640	1
36	XOR.000.117	OR D. 13,1x18,34x2,62	13,1x18,34x2,62 O-RING GASKET	1
37	XRP.006.000I	RONDELLA PIANA D. 6 INOX	INOX WASHER D.6	2



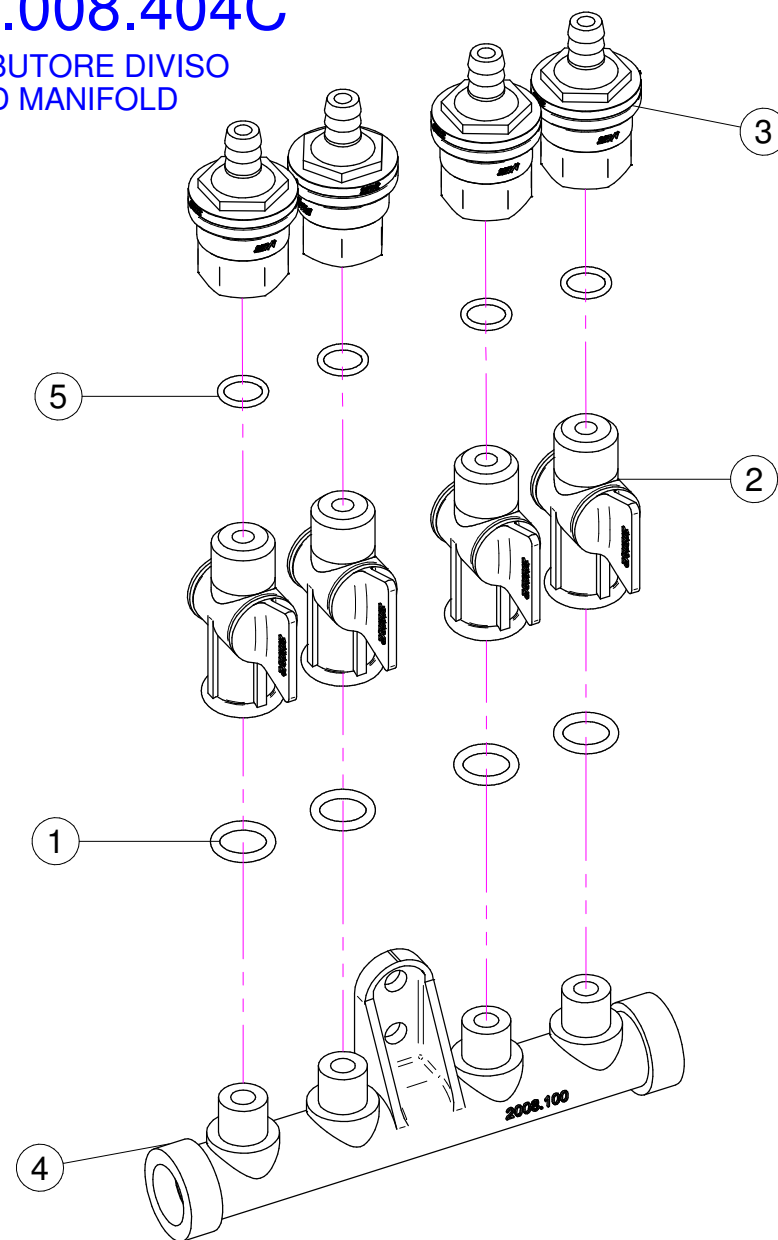
N°	Doc. Number	Titolo	Title	Q.tà	Note
1	X02.349.000	GUARNIZIONE PIANA D.17X23X3	17X23X3 FLAT GASKET	1	
2	X02.117.000	NIPPLO M14X1.5/D.17	ADAPTOR NIPPLE	1	
3	X00.055.045	GIRELLO 3/4" GAS	3/4" FLY NUT	1	
4	XDF.OTT.006	DADO AD ALETTE IN OTTONE M6	WING NUT M6	2	
5	XRP.006.000I	RONDELLA PIANA D. 6 INOX	INOX WASHER D.6	2	
6	XOR.002.062	OR D.15.6X1.78	D.15.6X1.78 OR	2	
7	X02.148.000	DISCO ROTANTE PER REGOLATORE	REGULATOR DISK	1	
8	XTE.006.030I	VITE TE M6X30 INOX	INOX M6X30 BOLT	2	
9	X02.147.500	COPPIA DI SEMICORPO REGOLATORE	REGULATOR HALF-BODY	1	
10	XOR.002.050	OR 12,43 x 1,78 NBR70	12,43 x 1,78 NBR70 O-RING GASKET	1	

X02.008.304C



X02.008.404C

DISTRIBUTORE DIVISO
DIVIDED MANIFOLD

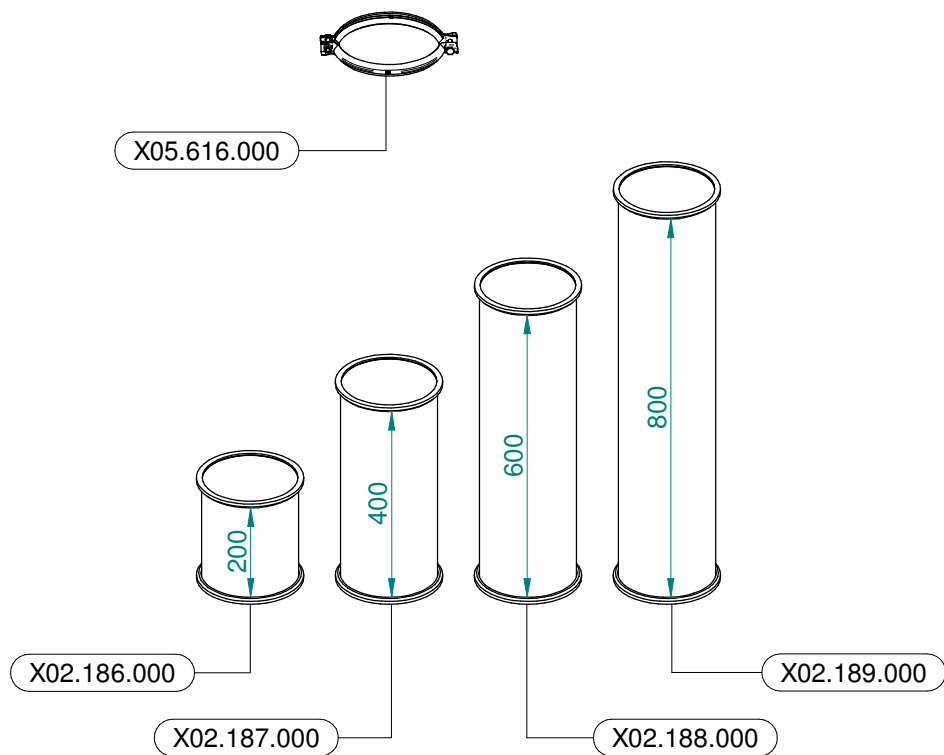


X02.008.304C

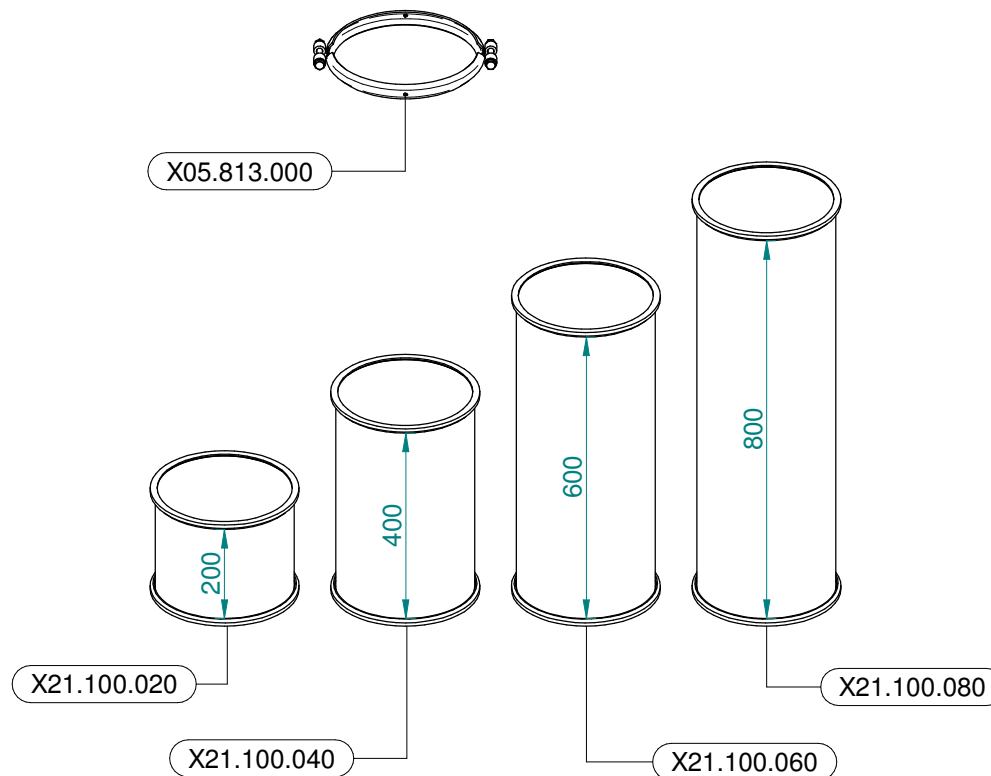
N°	Doc. Number	Titolo	Title	Q.tà	Note
1	XOR.000.117	OR D. 13,1x18,34x2,62	13,1x18,34x2;62 O-RING GASKET	4	
2	X20.202.100	RUBINETTO P.G. D.10 F.1/4" GAS TAGLIATO	TAP ASSEMBLY	4	
3	X00.227.01C	DISPOSITIVO ANTIGOCCIA	ANTDRIP VALVE	4	
4	X02.008.000	DISTRIBUTORE LIQUIDO TESTATE	SPRAYHEADS LIQUID MANIFOLD	1	
5	XOR.002.043	OR 10.82X14.38X1.78 NBR70	10.82X14.38X1.78 NBR70 O-RING GASKET	4	

X02.008.404C

N°	Doc. Number	Titolo	Title	Q.tà	Note
1	XOR.000.117	OR D. 13,1x18,34x2,62	13,1x18,34x2;62 O-RING GASKET	4	
2	X20.202.100	RUBINETTO P.G. D.10 F.1/4" GAS TAGLIATO	TAP ASSEMBLY	4	
3	X00.227.01C	DISPOSITIVO ANTIGOCCIA	ANTDRIP VALVE	4	
4	X02.008.100	DISTRIBUTORE LIQUIDO TESTATE DIVISO	DIVIDED SPRAYHEADS LIQUID MANIFOLD	1	
5	XOR.002.043	OR 10.82X14.38X1.78 NBR70	10.82X14.38X1.78 NBR70 O-RING GASKET	4	



Ø 175
 Plus 42 - 45 - 50
 Blitz 45 - 50
 Link 50



Ø 250
 Plus 55
 Blitz 55
 Link 55