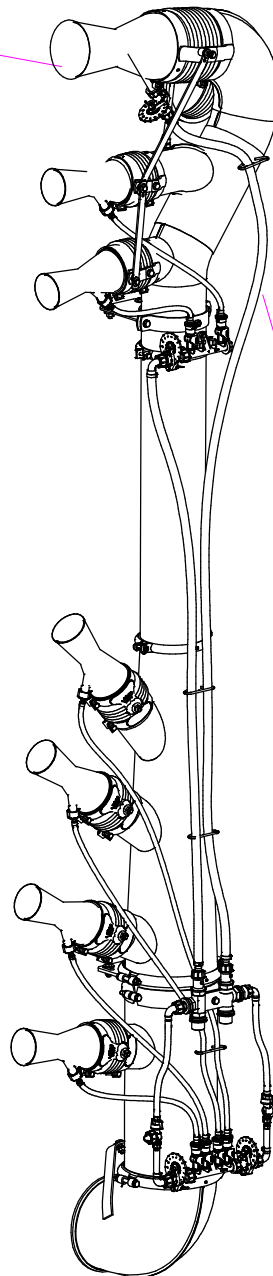
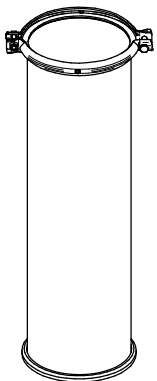


Sez. T03
Condotto dell'aria
Air duct

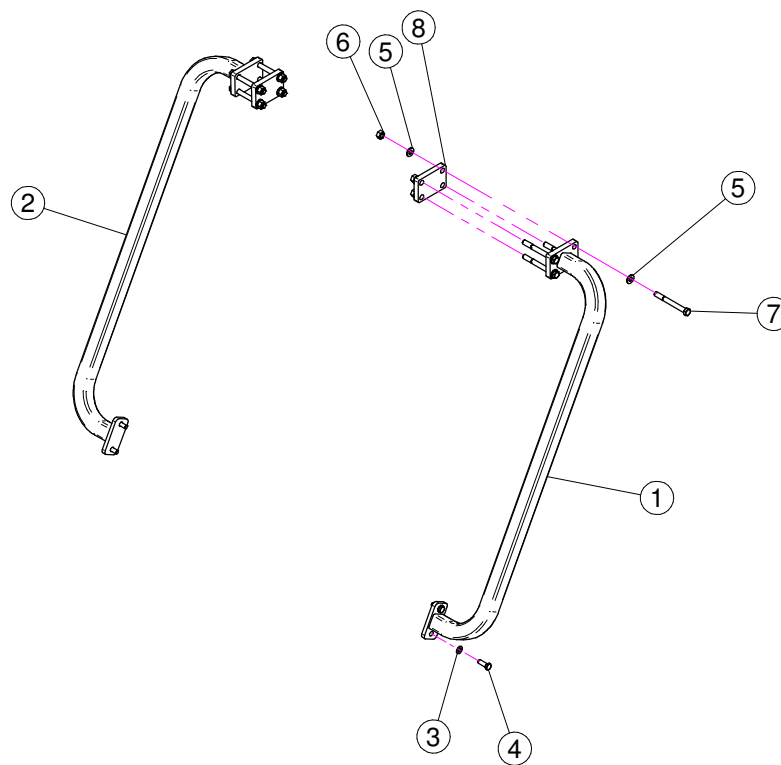


Sez. T06
Circuito idraulico
Plumbing of liquids

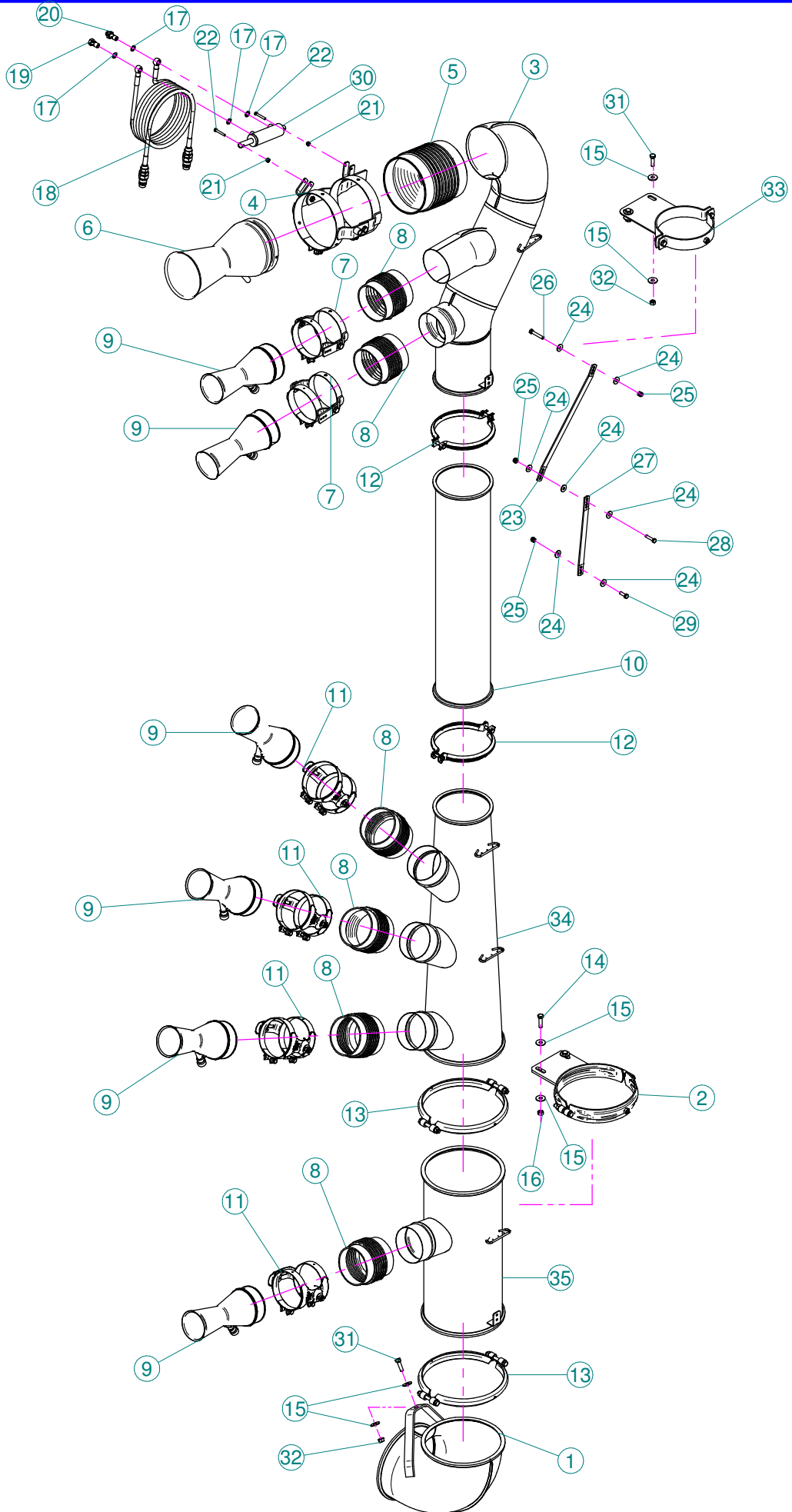


Sez. T28 (⌘)
Prolunghe
Extension

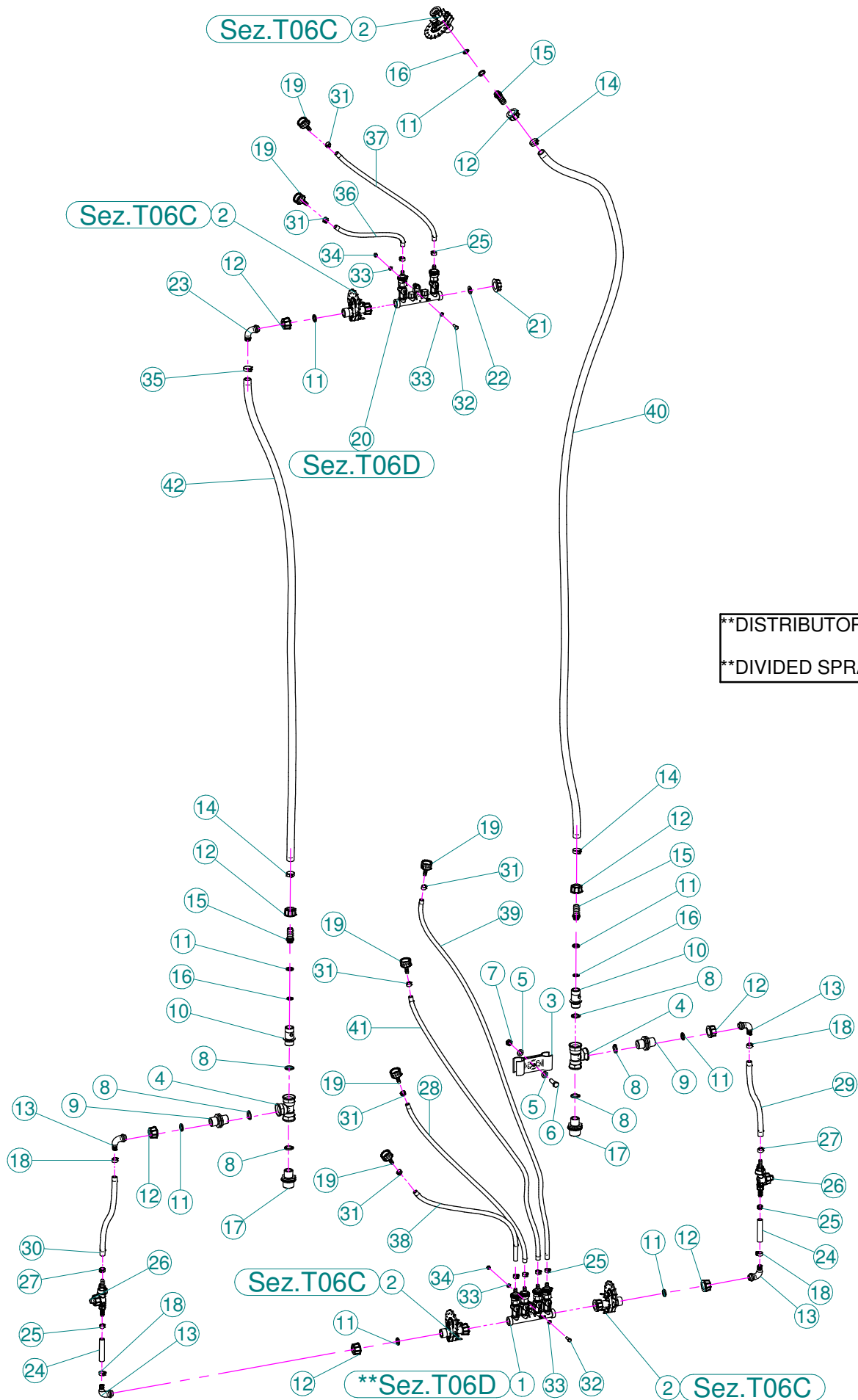
(⌘) A richiesta / Optional Devices



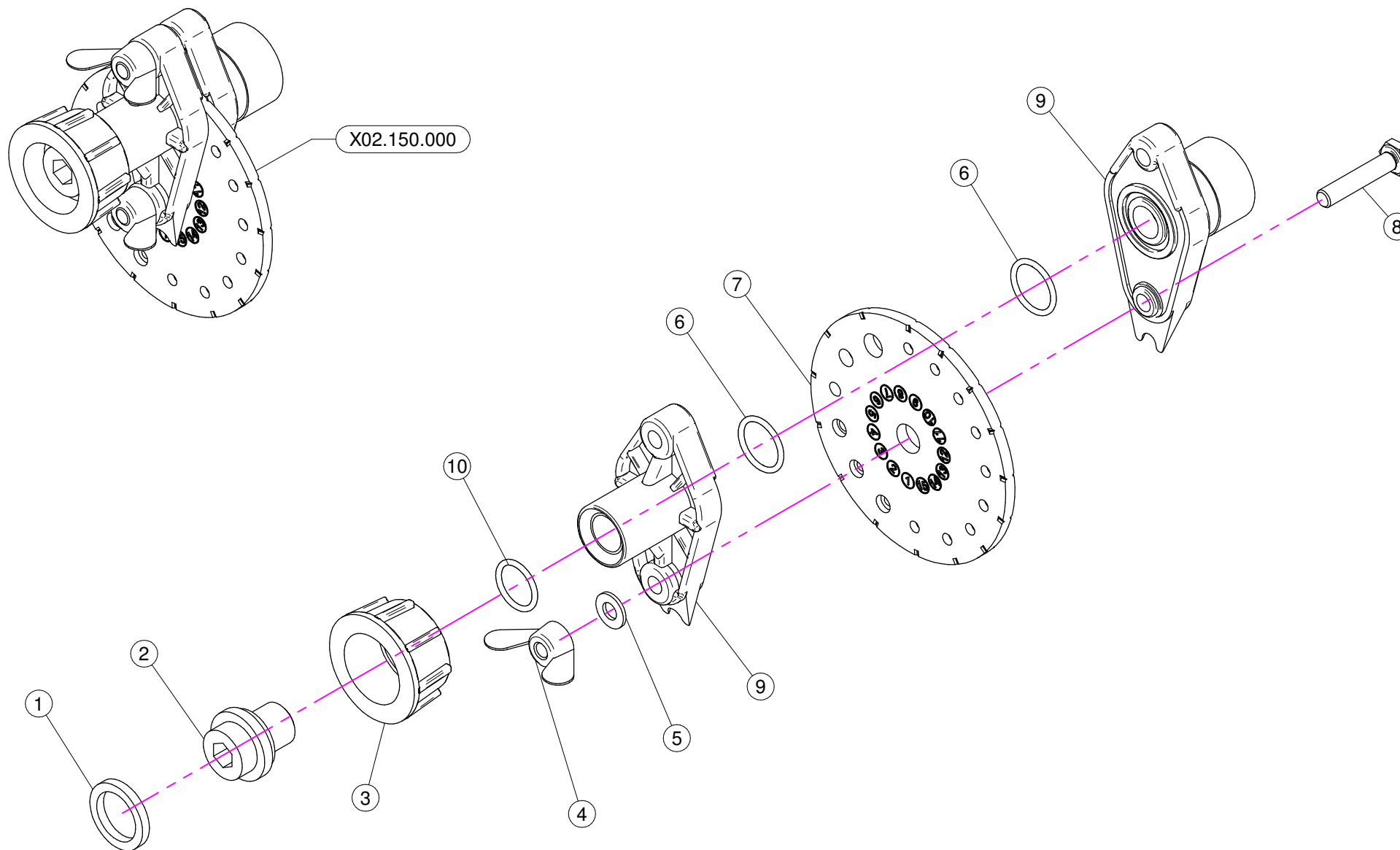
N°	Doc. Number	Titolo	Title	Q.tà
1	X50.232.000	Tirante di Sostegno Sinistro	Left Tie-rod	1
2	X50.232.100	Tirante di sostegno destro	Right tie-rod	1
3	XRP.010.000	RONDELLA PIANA D.10	WASHER D.10	4
4	XTE.010.030T	VITE TE M10 x 30	SCREW TE M10 x 30	4
5	XRP.012.000	RONDELLA PIANA D. 12	WASHER D. 12	16
6	XD0.12.5587G	DADO M12 PG UNI 5587	M12 NUT	8
7	XTE.012.110	VITE TE M12 x 110	SCREW TE M12 x 110	8
8	X20.937.000	LAMIERA FISSAGGIO TIRANTI	BRACKET	2



N°	Doc. Number	Titolo	Title	Q.tà
1	X05.822.000	CURVA D.250 A 90°	ELBOW D.250 90°	1
2	X20.504.000	FASCETTA D.250 FISSAGGIO TESTATE	D.250 CLAMP HEADS FIXING	1
3	X02.734.300	CORPO CANNONE D.175	CANNON BODY D.175	1
4	X02.735.100	COPPIA FASCETTE ORIENTABILI D.175	CANNON SPRAYER CLAMP D.175	1
5	X02.146.010	MANICOTTO FLESSIBILE D.180	FLEXIBLE SLEEVE	1
6	X10.042.180	DIFFUSORE 42/180	NOZZLE 42/180	1
7	X02.140.020	COPPIA FASCETTE ORIENTABILI D.127	CANNON SPRAYER CLAMP D.127	2
8	X02.021.000	MANICOTTO FLESSIBILE D.120	FLEXIBLE SLEEVE	6
9	X10.027.120	DIFFUSORE 27/120 CON TUBETTO	NOZZLE 27/120	6
10	X02.189.000	PROLUNGA D.175 X 800	EXTENSION D.175 X 800	1
11	X21.080.000	COPPIA FASCETTE Ø 127 DESTRA	RIGHT CLAMP Ø 127	4
12	X05.616.000	COLLARE PER TUBI D.175	PIPE CLAMP D.175	2
13	X05.813.000	COLLARE D.275	CLAMP D.275	2
14	XTE.010.040T	VITE TE M10 x 40	SCREW TE M10 x 40	2
15	XRP.010.030	RONDELLA PIANA D.10 x 30 mm	WASHER D.10 x 30 mm	10
16	XD0.10.5587G	DADO M10	NUT M10	2
17	X02.472.000	RONDELLA DI RAME	COPPER WASHER	4
18	X20.900.900	TUBO OLIO PER MARTINETTO L=9000	OIL PIPE FOR JACK L=9000	2
19	X02.408.000	RACCORDO DRITTO PER OCCHIO	JACK EYE RIGHT UNION	1
20	X20.718.000	REGOLATORE PORTATA IDRAULICA	FLOW REGULATOR	1
21	XDA.006.0AG	DADO AUTOBLOCCANTE M6 ALTO PG	SELF-LOCKING NUT - HIGH M6	2
22	XTC.06.40.07I	VITE T.CIL. M6 x 40 INOX	INOX SCREW M6 x 40	2
23	X20.880.000	STAFFA DI COLLEGAMENTO L=430	BRACKET L=430	1
24	XRP.008.024	RONDELLA PIANA LARGA D.8X24	WASHER D.8X24	7
25	XDA.008.0AG	DADO AUTOBLOCCANTE M8	SELF LOCKING NUT M8	3
26	XTE.008.050T	VITE TE M8X50	SCREW TE M8X50	1
27	X20.881.000	STAFFA DI COLLEGAMENTO L=300	BRACKET L=300	1
28	XTE.008.035T	VITE TE M8x35	SCREW TE M8x35	1
29	XTE.008.025T	VITE TE M8 x 25	SCREW TE M8 x 25	1
30	X02.840.04C	MARTINETTO COMPLETO D.20/30 CORSA 60	JACK	1
31	XTE.010.035T	VITE TE 10 x 35	SCREW TE 10 x 35	3
32	XD0.10.5587G	DADO M10	NUT M10	3
33	X20.503.500	FASCETTA D.175 FISSAGGIO TESTATE	D.175 CLAMP HEADS FIXING	1
34	X05.961.300	CORPO GETTO CANNONE CON 3 USCITE	CANNON BODY 3 OUTLET	1
35	X05.961.400	CORPO GETTO CANNONE CON 1 USCITA	CANNON BODY 1 OUTLET	1

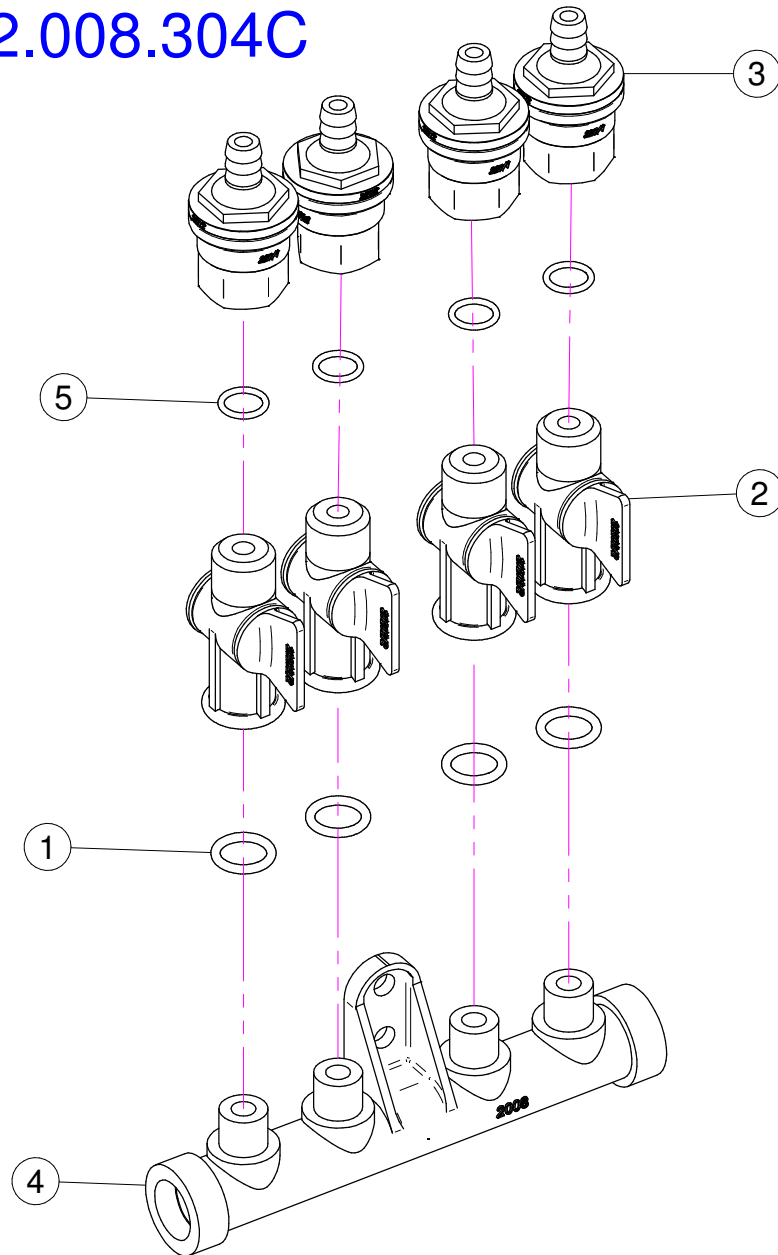


N°	Doc. Number	Titolo	Title	Q.tà
1	X02.008.404C	DISTRIBUTORE LIQUIDI A 4 RUBINETTI	4 TAPS LIQUID MANIFOLD	1
2	X02.150.000	REGOLATORE A DISCO ROTANTE COMPLETO	ROTATION DISK REGULATION	4
3	X02.999.000	STAFFA FISSAGGIO RACCORDO A T	T UNION FIXING BRACKET	1
4	X02.396.000	RACCORDO A T 3/4" - 3/4" - 3/4" F.	UNION 3/4" - 3/4" - 3/4" F.	2
5	XRP.010.000	RONDELLA PIANA D.10	WASHER D.10	2
6	XTE.010.035T	VITE TE 10 x 35	SCREW TE 10 x 35	1
7	XDA.010.0BG	DADO AUTOBLOCCANTE M10	SELF LOCKING NUT M10	1
8	XOR.004.081	OR D.20,22 x 3,53	20,22 x 3,53 O-RING GASKET	6
9	X02.380.000	NIPPLIO 3/4"	NIPPLE 3/4"	2
10	X20.087.000	VALVOLA ANTIRITORNO 3/4 3/4	VALVE 3/4 3/4	2
11	X02.349.000	GUARNIZIONE PIANA D.17X23X3	17X23X3 FLAT GASKET	8
12	X00.055.045	GIRELLO 3/4" GAS	3/4" FLY NUT	8
13	X00.055.046R	RACCORDO CURVO P.G. D.14	CURVED UNION WITH R.H. D.14	4
14	XFC.022,5.024	FASCETTA COBRA 22,5 - 24	KOBRA CLAMP 22,5 - 24	3
15	X02.002.000	RACCORDO DIRITTO 3/4" P.G.18	STRAIGHT UNION 3/4" R.H.18	3
16	XOR.000.117	OR D. 13,1x18,34x2,62	13,1x18,34x2,62 O-RING GASKET	3
17	X02.293.000	RIDUZIONE 1" M - 3/4" M	1" M - 3/4" M REDUCER NIPPLE	2
18	XFC.016,5.018	FASCETTA COBRA 16,5 - 18	KOBRA CLAMP 16,5 - 18	4
19	X21.010.000	RACCORDO P.G. DIRITTO D.10 COMPLETO	COMPLETE R.H. D.10 UNION	6
20	X02.008.302C	DISTRIBUTORE LIQUIDI A 2 RUBINETTI	2 TAPS LIQUID MANIFOLD	1
21	X02.182.000	TAPPO 3/4" FEMMINA	FEMALE 3/4" CAP	1
22	X02.030.010	GUARNIZIONE TAPPO DISTRIBUTORE	GASKET	1
23	X00.055.046	RACCORDO CURVO P.G. D.17	CURVED UNION WITH R.H. D.17	1
24	X02.213.007	TUBO D.10x16 L=70	HOSE D.10x16 L=70	2
25	XFC.013,5.015	FASCETTA COBRA SLO30710	KOBRA CLAMP	8
26	X00.226.05C	GETTO ANTIGOCCIA DIRITTO COMPLETO	COMPLETE ANTIDROP	2
27	XFC.015,5.017	FASCETTA COBRA SLO30720	KOBRA CLAMP	2
28	X02.217.072	TUBO D.8x13 L=720	HOSE D.8x13 L=720	1
29	X02.213.032	TUBO D.10x16 L=320	HOSE D.10x16 L=320	1
30	X02.213.032	TUBO D.10x16 L=320	HOSE D.10x16 L=320	1
31	XFC.012,5.014	FASCETTA COBRA SLO30705	KOBRA CLAMP	6
32	XTE.006.020T	VITE TE M6 x 20	SCREW TE M6 x 20	4
33	XRP.006.000	RONDELLA PIANA D. 6	WASHER D.6	8
34	XD0.06.5588G	DADO M6	NUT M6	4
35	XFC.023,5.025	FASCETTA COBRA 23,5 - 25	KOBRA CLAMP 23,5 - 25	1
36	X02.217.035	TUBO D.8x13 L=350	HOSE D.8x13 L=350	1
37	X02.217.047	TUBO D.8x13 L=470	HOSE D.8x13 L=470	1
38	X02.217.047	TUBO D.8x13 L=470	HOSE D.8x13 L=470	1
39	X02.217.133	TUBO D.8x13 L=1330	HOSE D.8x13 L=1330	1
40	X02.211.255	TUBO D.16x23 L=2550	HOSE D.16x23 L=2550	1
41	X02.217.112	TUBO D.8x13 L=1120	HOSE D.8x13 L=1120	1
42	X02.211.182	TUBO D.16x23 L=1820	HOSE D.16x23 L=1820	1



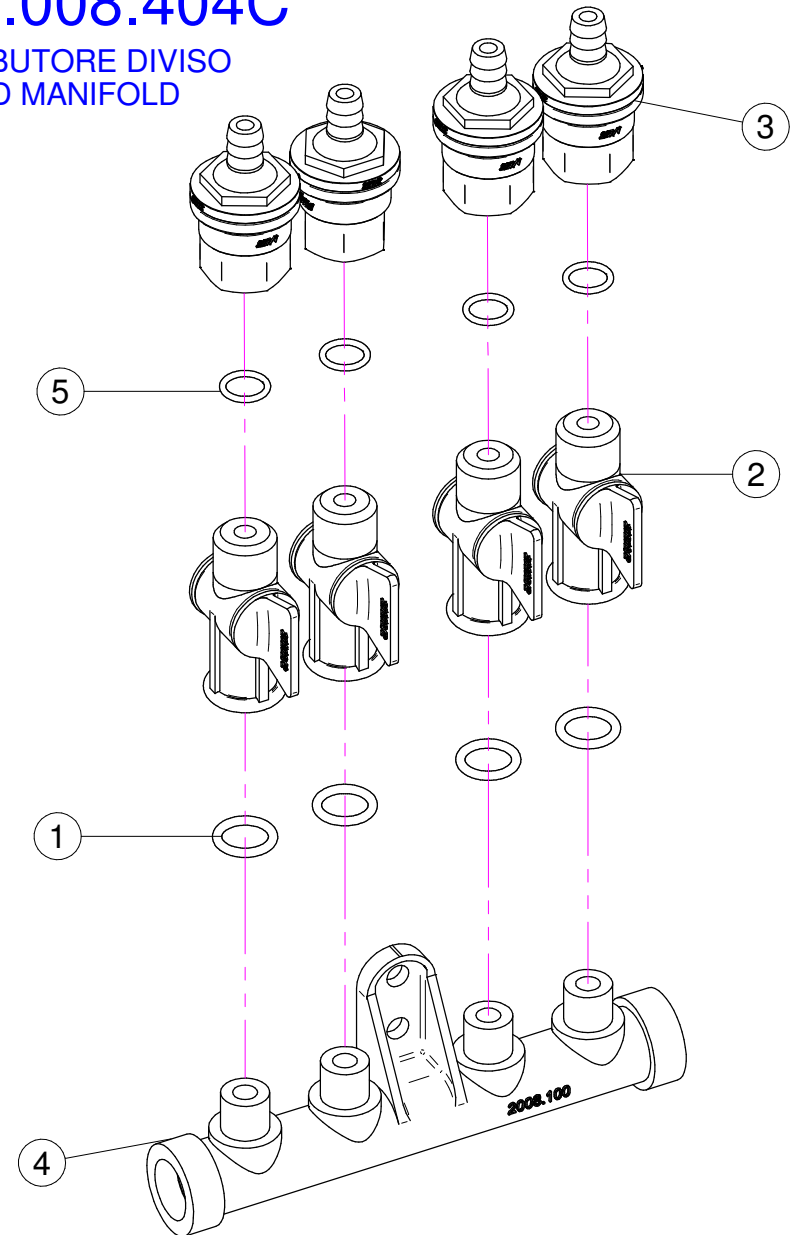
N°	Doc. Number	Titolo	Title	Q.tà	Note
1	X02.349.000	GUARNIZIONE PIANA D.17X23X3	17X23X3 FLAT GASKET	1	
2	X02.117.000	NIPPLO M14X1.5/D.17	ADAPTOR NIPPLE	1	
3	X00.055.045	GIRELLO 3/4" GAS	3/4" FLY NUT	1	
4	XDF.OTT.006	DADO AD ALETTE IN OTTONE M6	WING NUT M6	2	
5	XRP.006.000I	RONDELLA PIANA D. 6 INOX	INOX WASHER D.6	2	
6	XOR.002.062	OR D.15.6X1.78	D.15.6X1.78 OR	2	
7	X02.148.000	DISCO ROTANTE PER REGOLATORE	REGULATOR DISK	1	
8	XTE.006.030I	VITE TE M6X30 INOX	INOX M6X30 BOLT	2	
9	X02.147.500	COPPIA DI SEMICORPO REGOLATORE	REGULATOR HALF-BODY	1	
10	XOR.002.050	OR 12,43 x 1,78 NBR70	12,43 x 1,78 NBR70 O-RING GASKET	1	

X02.008.304C



X02.008.404C

DISTRIBUTORE DIVISO
DIVIDED MANIFOLD

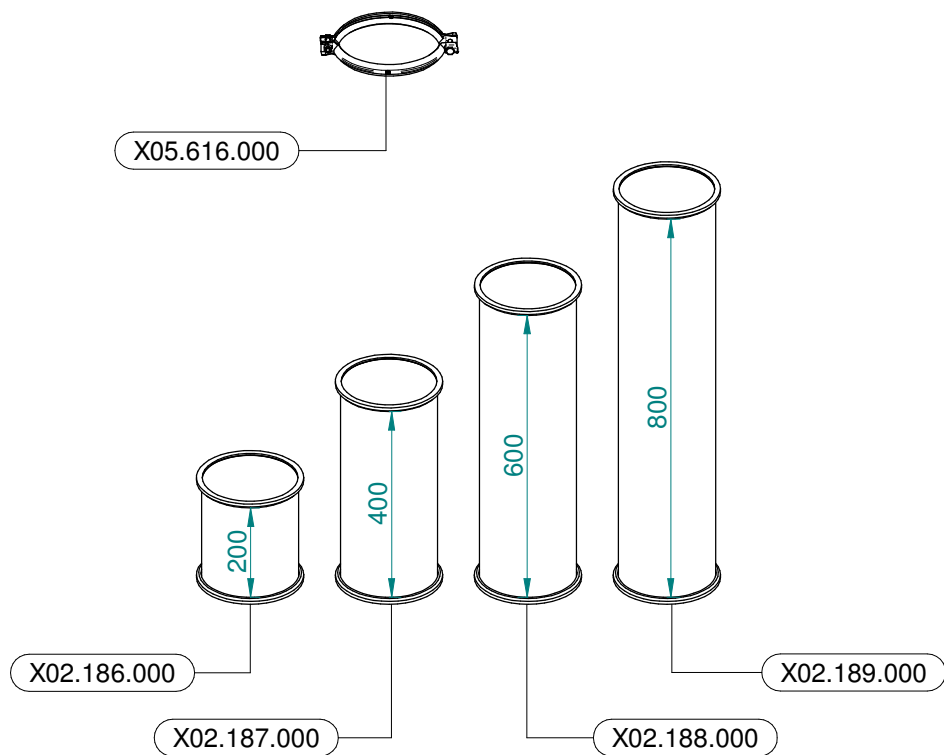


X02.008.304C

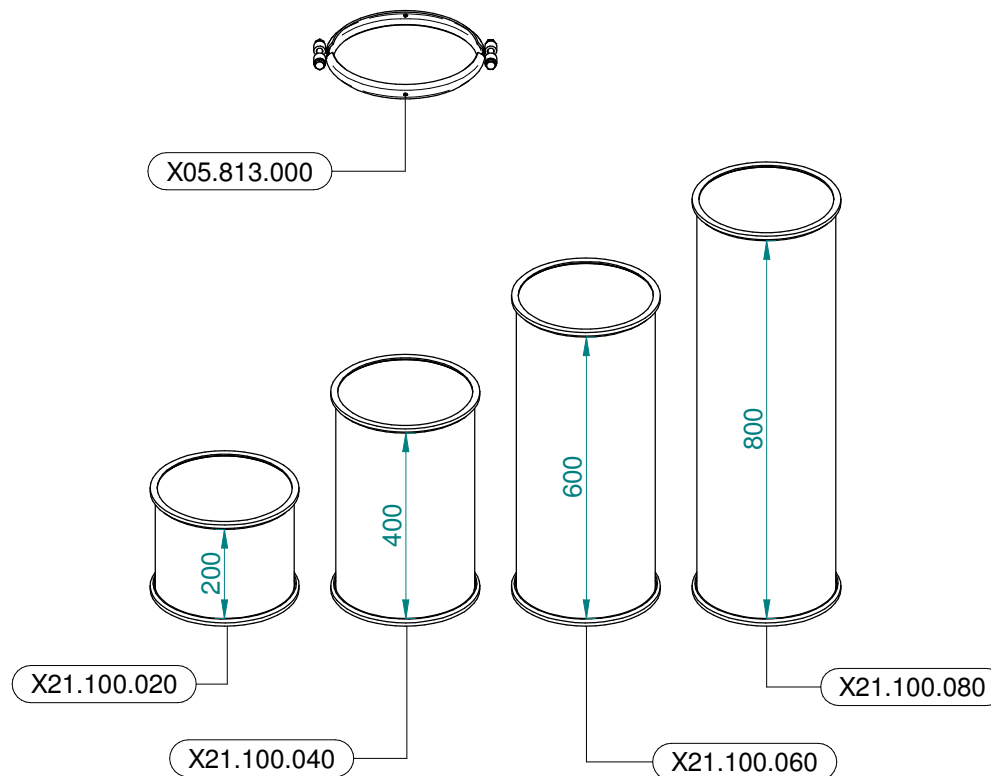
N°	Doc. Number	Titolo	Title	Q.tà	Note
1	XOR.000.117	OR D. 13,1x18,34x2,62	13,1x18,34x2;62 O-RING GASKET	4	
2	X20.202.100	RUBINETTO P.G. D.10 F.1/4" GAS TAGLIATO	TAP ASSEMBLY	4	
3	X00.227.01C	DISPOSITIVO ANTIGOCCIA	ANTDRIP VALVE	4	
4	X02.008.000	DISTRIBUTORE LIQUIDO TESTATE	SPRAYHEADS LIQUID MANIFOLD	1	
5	XOR.002.043	OR 10.82X14.38X1.78 NBR70	10.82X14.38X1.78 NBR70 O-RING GASKET	4	

X02.008.404C

N°	Doc. Number	Titolo	Title	Q.tà	Note
1	XOR.000.117	OR D. 13,1x18,34x2,62	13,1x18,34x2;62 O-RING GASKET	4	
2	X20.202.100	RUBINETTO P.G. D.10 F.1/4" GAS TAGLIATO	TAP ASSEMBLY	4	
3	X00.227.01C	DISPOSITIVO ANTIGOCCIA	ANTDRIP VALVE	4	
4	X02.008.100	DISTRIBUTORE LIQUIDO TESTATE DIVISO	DIVIDED SPRAYHEADS LIQUID MANIFOLD	1	
5	XOR.002.043	OR 10.82X14.38X1.78 NBR70	10.82X14.38X1.78 NBR70 O-RING GASKET	4	



Ø 175
 Plus 42 - 45 - 50
 Blitz 45 - 50
 Link 50



Ø 250
 Plus 55
 Blitz 55
 Link 55