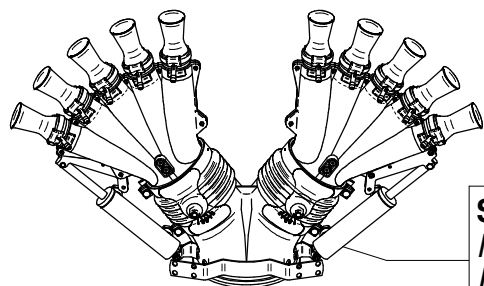


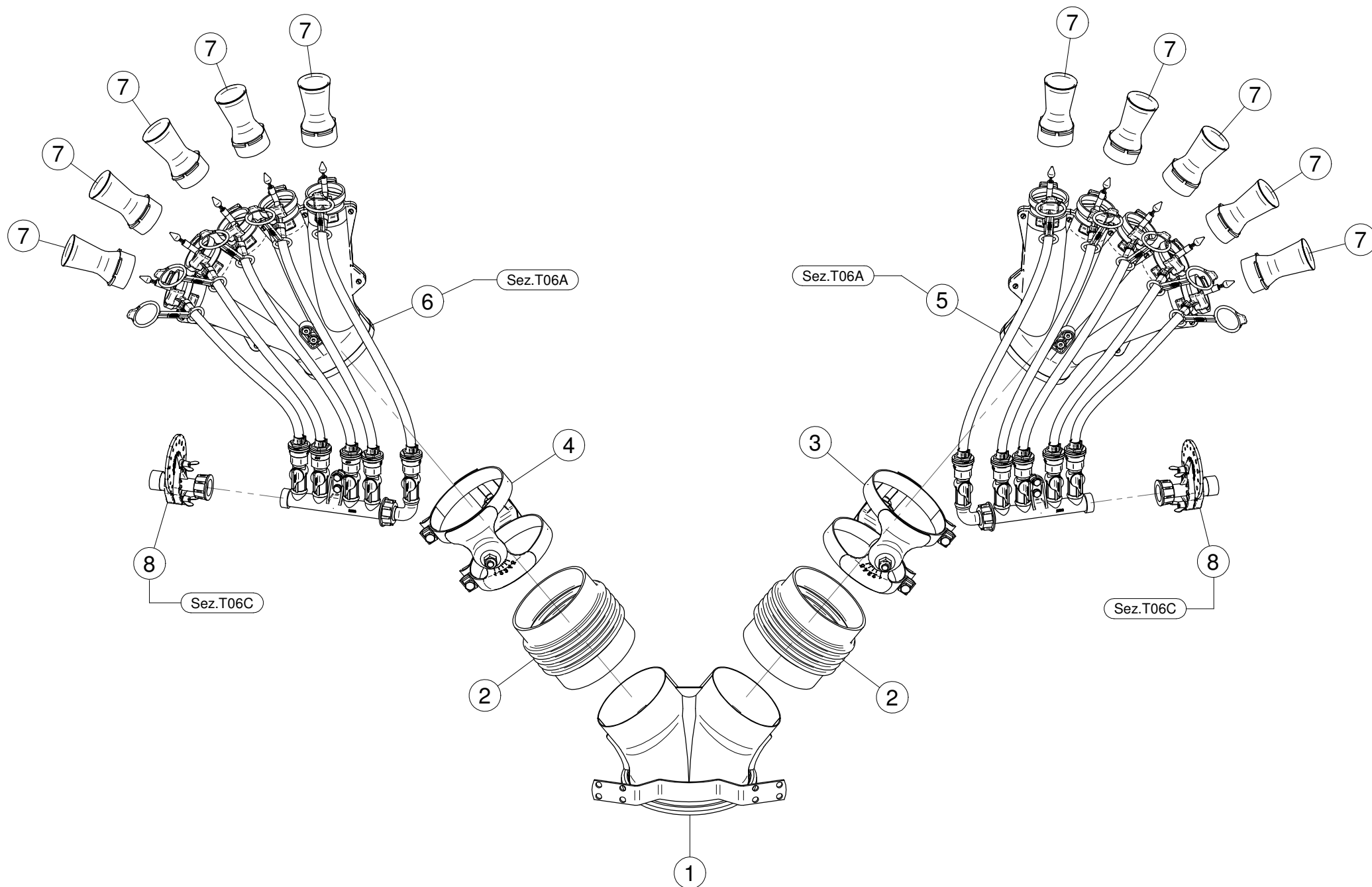
**Sez. T03**  
*Percorso Aria*  
*Air Duct*

**Sez. T06A**  
*Percorso Liquidi*  
*Liquid Duct*

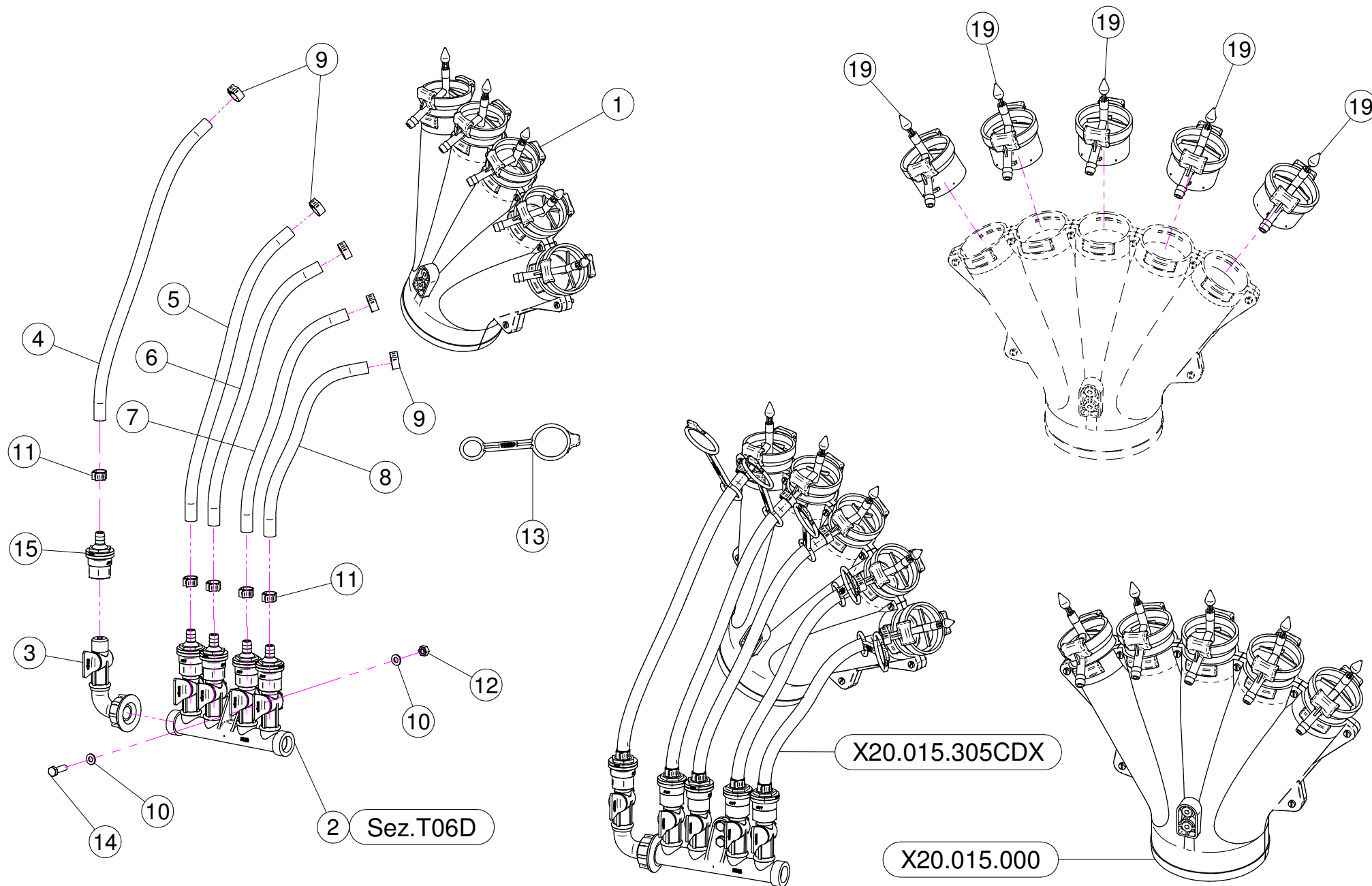


**Sez. T26 (a)**  
*Movimentazione Idraulica*  
*Hydraulic Movement*

**(a) A richiesta / Optional Devices**



| N° | Doc. Number    | Titolo   | Title                         | Qtà |
|----|----------------|--|-------------------------------|-----|
| 1  | X02.739.000    | CORPO TESTATA D.175 A 2 USCITE                 | BODY HEAD                     | 1   |
| 2  | X02.021.000    | MANICOTTO FLESSIBILE D.120                     | FLEXIBLE SLEEVE               | 2   |
| 3  | X21.080.000    | COPPIA FASCETTE Ø 127 DESTRA                   | RIGHT CLAMP Ø 127             | 1   |
| 4  | X21.081.000    | COPPIA FASCETTE Ø 127 SINISTRA                 | LEFT CLAMP Ø 127              | 1   |
| 5  | X20.015.305CDX | MANO A 5 USCITE CON DISTRIBUTORE A 5 RUBINETTI | FIVE OUTLETS WITH DISTRIBUTOR | 1   |
| 6  | X20.015.305CSX | MANO A 5 USCITE CON DISTRIBUTORE A 5 RUBINETTI | FIVE OUTLETS WITH DISTRIBUTOR | 1   |
| 7  | X00.006.050    | DIFFUSORE 6/50                                 | NOZZLE 6/50                   | 10  |
| 8  | X02.150.000    | REGOLATORE A DISCO ROTANTE COMPLETO            | ROTATION DISK REGULATION      | 2   |

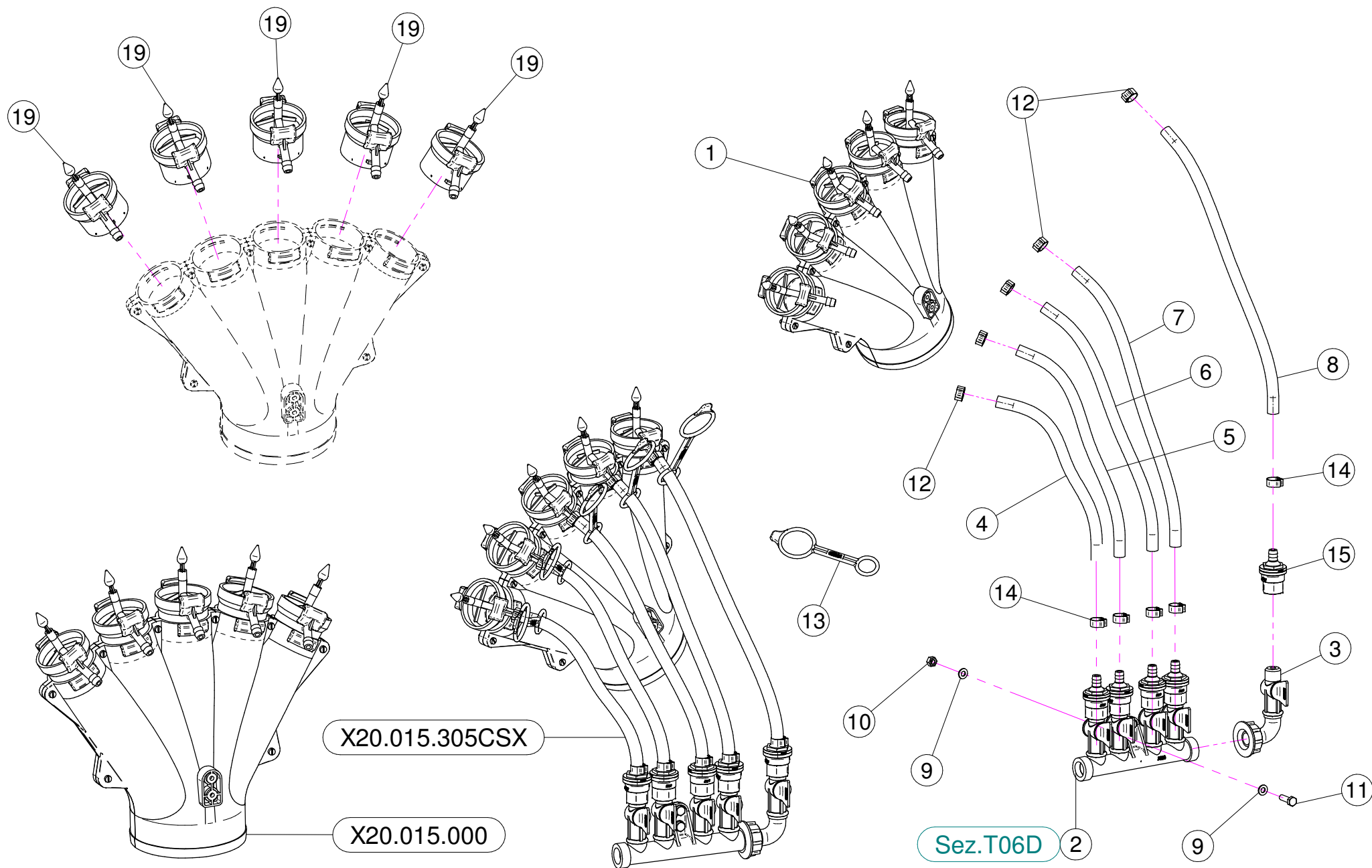


## X20.015.305CDX

| N° | Doc. Number   | Titolo                      | Title                   | Q.tà |
|----|---------------|-----------------------------|-------------------------|------|
| 1  | X20.015.000   | MANO A 5 USCITE CON TUBETTI | FIVE OUTLETS WITH PIPES | 1    |
| 2  | X02.008.304C  | DISTRIBUTORE A 4 VIE        | 4 PIPES DISTRIBUTOR     | 1    |
| 3  | X20.202.102C  | RUBINETTO 1/4"F CON CURVA   | TAP ASSEMBLY WITH ELBOW | 1    |
| 4  | X02.217.038   | TUBO D. 8 x 13 L=380        | HOSE D. 8 x 13 L=380    | 1    |
| 5  | X02.217.038   | TUBO D. 8 x 13 L=380        | HOSE D. 8 x 13 L=380    | 1    |
| 6  | X02.217.038   | TUBO D. 8 x 13 L=380        | HOSE D. 8 x 13 L=380    | 1    |
| 7  | X02.217.035   | TUBO D. 8 x 13 L=350        | HOSE D. 8 x 13 L=350    | 1    |
| 8  | X02.217.033   | TUBO D. 8 x 13 L=330        | HOSE D. 8 x 13 L=330    | 1    |
| 9  | XFC.012,5.014 | FASCETTA COBRA SLO30705     | KOBRA CLAMP             | 5    |
| 10 | XRP.006.000   | RONDELLA PIANA D. 6         | WASHER D.6              | 4    |
| 11 | XFC.013,5.015 | FASCETTA COBRA SLO30710     | KOBRA CLAMP             | 5    |
| 12 | XD0.06.5588G  | DADO M6                     | NUT M6                  | 2    |
| 13 | X20.697.000   | FERMA DIFFUSORE             | NOZZLE STOP             | 5    |
| 14 | XTE.006.020T  | VITE TE M6 x 20             | SCREW TE M6 x 20        | 2    |
| 15 | X00.227.01C   | DISPOSITIVO ANTIGOCCIA      | ANTDRIP VALVE           | 1    |

## X20.015.000

| N° | Doc. Number | Titolo                                | Title           | Q.tà |
|----|-------------|---------------------------------------|-----------------|------|
| 19 | X20.016.01C | RACCORDO ATTACCO RAPIDO PORTA TUBETTO | PIPE WITH OLIVE | 5    |

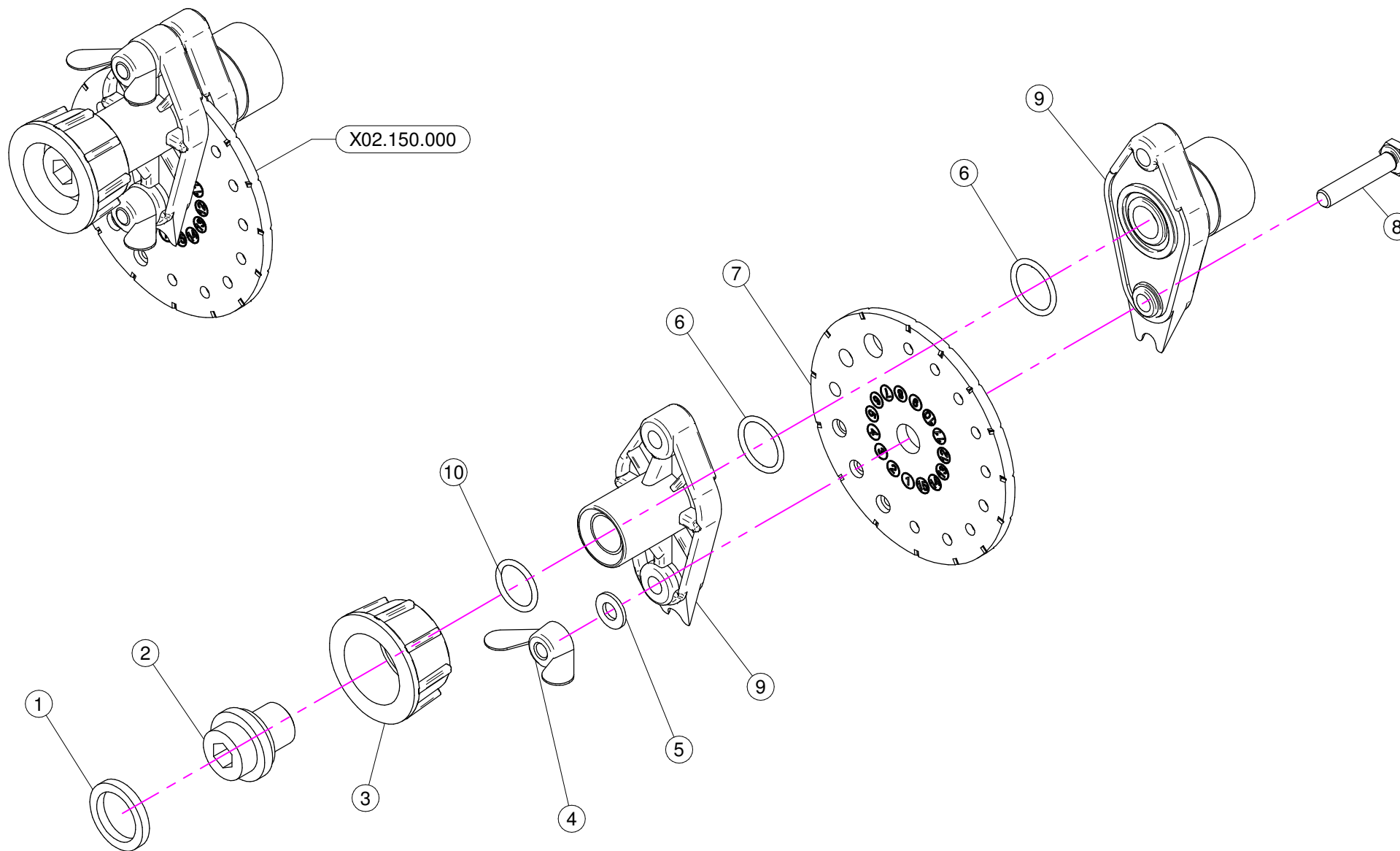


## X20.015.305CSX

| N° | Doc. Number   | Titolo                      | Title                   | Q.tà |
|----|---------------|-----------------------------|-------------------------|------|
| 1  | X20.015.000   | MANO A 5 USCITE CON TUBETTI | FIVE OUTLETS WITH PIPES | 1    |
| 2  | X02.008.304C  | DISTRIBUTORE A 4 VIE        | 4 PIPES DISTRIBUTOR     | 1    |
| 3  | X20.202.102C  | RUBINETTO 1/4"F CON CURVA   | TAP ASSEMBLY WITH ELBOW | 1    |
| 4  | X02.217.033   | TUBO D. 8 x 13 L=330        | HOSE D. 8 x 13 L=330    | 1    |
| 5  | X02.217.035   | TUBO D. 8 x 13 L=350        | HOSE D. 8 x 13 L=350    | 1    |
| 6  | X02.217.038   | TUBO D. 8 x 13 L=380        | HOSE D. 8 x 13 L=380    | 1    |
| 7  | X02.217.038   | TUBO D. 8 x 13 L=380        | HOSE D. 8 x 13 L=380    | 1    |
| 8  | X02.217.038   | TUBO D. 8 x 13 L=380        | HOSE D. 8 x 13 L=380    | 1    |
| 9  | XRP.006.000   | RONDELLA PIANA D. 6         | WASHER D.6              | 4    |
| 10 | XD0.06.5588G  | DADO M6                     | NUT M6                  | 2    |
| 11 | XTE.006.020T  | VITE TE M6 x 20             | SCREW TE M6 x 20        | 2    |
| 12 | XFC.012,5.014 | FASCETTA COBRA SLO30705     | KOBRA CLAMP             | 5    |
| 13 | X20.697.000   | FERMA DIFFUSORE             | NOZZLE STOP             | 5    |
| 14 | XFC.013,5.015 | FASCETTA COBRA SLO30710     | KOBRA CLAMP             | 5    |
| 15 | X00.227.01C   | DISPOSITIVO ANTIGOCCIA      | ANTDRIP VALVE           | 1    |

## X20.015.000

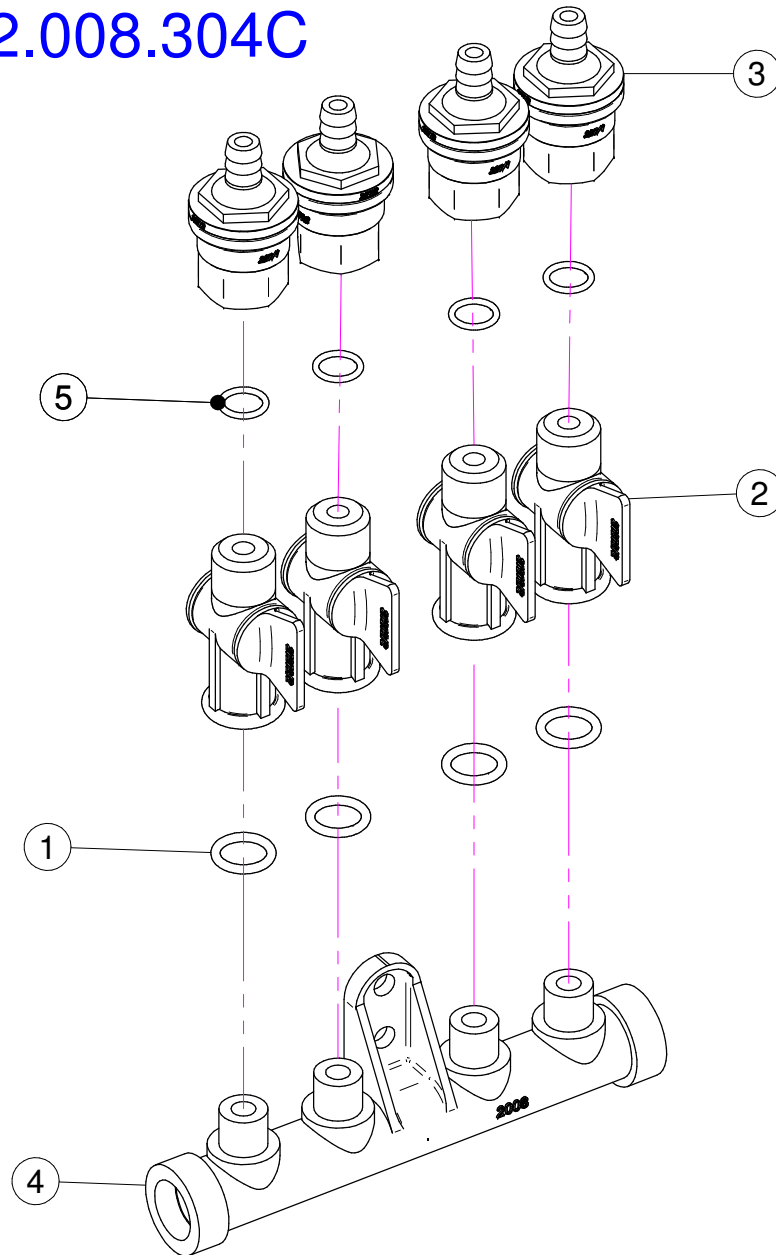
| N° | Doc. Number | Titolo                                | Title           | Q.tà |
|----|-------------|---------------------------------------|-----------------|------|
| 19 | X20.016.01C | RACCORDO ATTACCO RAPIDO PORTA TUBETTO | PIPE WITH OLIVE | 5    |





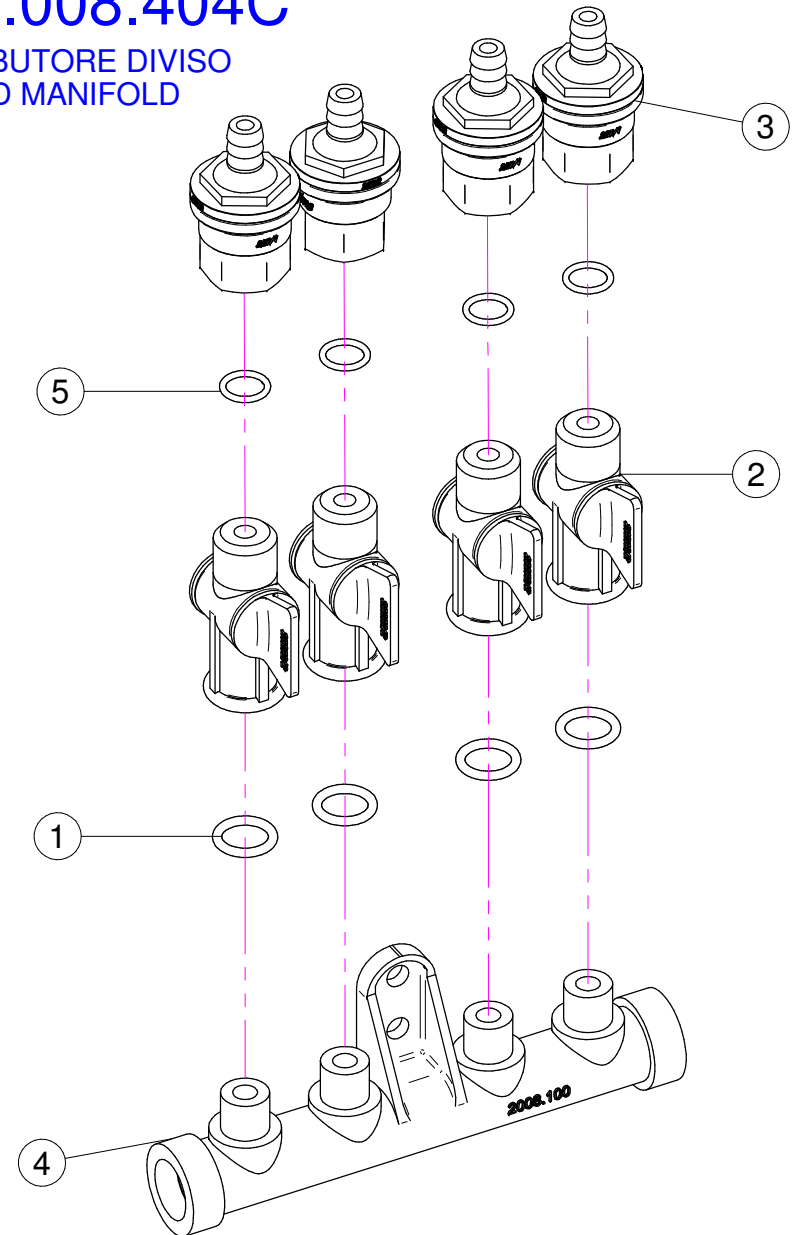
| N° | Doc. Number  | Titolo                         | Title               | Q.tà | Note |
|----|--------------|--------------------------------|---------------------|------|------|
| 1  | X02.349.000  | GUARNIZIONE PIANA D.17X23X3    | 17X23X3 FLAT GASKET | 1    |      |
| 2  | X02.117.000  | NIPPLO M14X1.5/D.17            | ADAPTOR NIPPLE      | 1    |      |
| 3  | X00.055.045  | GIRELLO 3/4" GAS               | 3/4" FLY NUT        | 1    |      |
| 4  | XDF.OTT.006  | DADO AD ALETTE IN OTTONE M6    | WING NUT M6         | 2    |      |
| 5  | XRP.006.000I | RONDELLA PIANA D. 6 INOX       | INOX WASHER D.6     | 2    |      |
| 6  | XOR.002.062  | OR D.15.6X1.78                 | D.15.6X1.78 OR      | 2    |      |
| 7  | X02.148.000  | DISCO ROTANTE PER REGOLATORE   | REGULATOR DISK      | 1    |      |
| 8  | XTE.006.030I | VITE TE M6X30 INOX             | INOX M6X30 BOLT     | 2    |      |
| 9  | X02.147.500  | COPPIA DI SEMICORPO REGOLATORE | REGULATOR HALF-BODY | 1    |      |
| 10 | XOR.003.050  | OR D.12.37x2.62                | O-RING D.12.37x2.62 | 1    |      |

## X02.008.304C



## X02.008.404C

DISTRIBUTORE DIVISO  
DIVIDED MANIFOLD

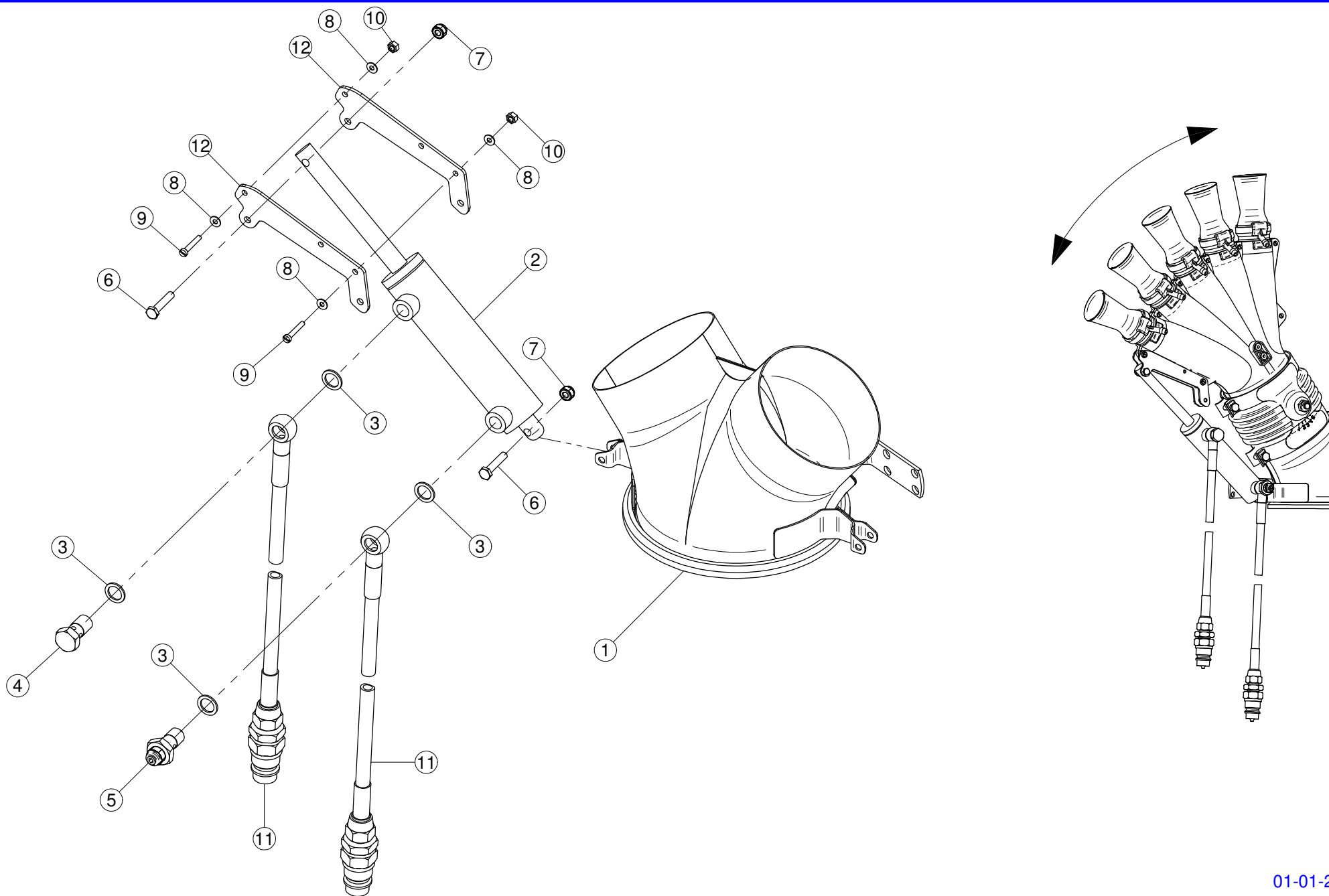


## X02.008.304C

| N° | Doc. Number | Titolo                                  | Title                                | Q.tà | Note |
|----|-------------|---|--------------------------------------|------|------|
| 1  | XOR.000.117 | OR D. 13,1x18,34x2,62                   | 13,1x18,34x2;62 O-RING GASKET        | 4    |      |
| 2  | X20.202.100 | RUBINETTO P.G. D.10 F.1/4" GAS TAGLIATO | TAP ASSEMBLY                         | 4    |      |
| 3  | X00.227.01C | DISPOSITIVO ANTIGOCCIA                  | ANTDRIP VALVE                        | 4    |      |
| 4  | X02.008.000 | DISTRIBUTORE LIQUIDO TESTATE            | SPRAYHEADS LIQUID MANIFOLD           | 1    |      |
| 5  | XOR.002.043 | OR 10.82X14.38X1.78 NBR70               | 10.82X14.38X1.78 NBR70 O-RING GASKET | 4    |      |

## X02.008.404C

| N° | Doc. Number | Titolo                                  | Title                                | Q.tà | Note |
|----|-------------|---|--------------------------------------|------|------|
| 1  | XOR.000.117 | OR D. 13,1x18,34x2,62                   | 13,1x18,34x2;62 O-RING GASKET        | 4    |      |
| 2  | X20.202.100 | RUBINETTO P.G. D.10 F.1/4" GAS TAGLIATO | TAP ASSEMBLY                         | 4    |      |
| 3  | X00.227.01C | DISPOSITIVO ANTIGOCCIA                  | ANTDRIP VALVE                        | 4    |      |
| 4  | X02.008.100 | DISTRIBUTORE LIQUIDO TESTATE DIVISO     | DIVIDED SPRAYHEADS LIQUID MANIFOLD   | 1    |      |
| 5  | XOR.002.043 | OR 10.82X14.38X1.78 NBR70               | 10.82X14.38X1.78 NBR70 O-RING GASKET | 4    |      |



| N° | Doc. Number   | Titolo                                   | Title                      | Q.tà | Note |
|----|---------------|--|----------------------------|------|------|
| 1  | X02.739.300   | CORPO TESTATA Ø175 CON 2 USCITE Ø120     | BODY HEAD                  | 1    |      |
| 2  | X02.840.05C   | MARTINETTO COMPLETO D.20/30 CORSA 100    | JACK                       | 2    |      |
| 3  | X02.472.000   | RONDELLA DI RAME                         | COPPER WASHER              | 8    |      |
| 4  | X02.408.000   | RACCORDO DRITTO PER OCCHIO               | JACK EYE RIGHT UNION       | 2    |      |
| 5  | X20.718.000   | REGOLATORE PORTATA IDRAULICA             | FLOW REGULATOR             | 2    |      |
| 6  | XTE.006.030I  | VITE TE M6X30 INOX                       | INOX M6X30 BOLT            | 4    |      |
| 7  | XDA.006.0AG   | DADO AUTOBLOCCANTE M6 ALTO PG            | SELF-LOCKING NUT - HIGH M6 | 4    |      |
| 8  | XRP.004.000I  | RONDELLA PIANA D.4 INOX                  | INOX WASHER D.4            | 8    |      |
| 9  | XTC.04.25.07I | VITE M4 x 25 INOX                        | INOX SCREW M4 x 25         | 4    |      |
| 10 | XDOT.04.5588G | DADO M4 IN OTTONE                        | BRASS NUT M4               | 4    |      |
| 11 | X20.900.370   | TUBO OLIO PER MARTINETTO L=3700          | OIL PIPE FOR JACK L=3700   | 4    |      |
| 12 | X20.647.002   | PIASTRINA LATERALE KIT DI MOVIMENTAZIONE | BRACKET                    | 4    |      |