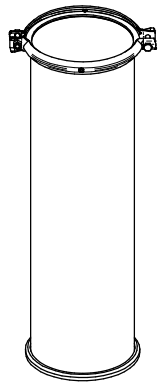
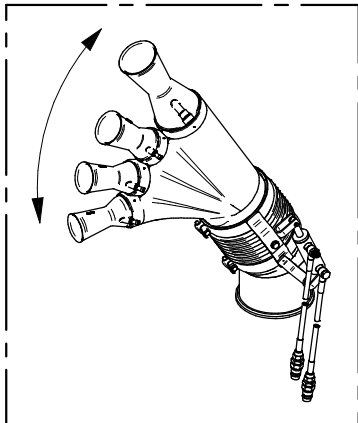


Sez. T06
Circuito idraulico
Plumbing of liquids

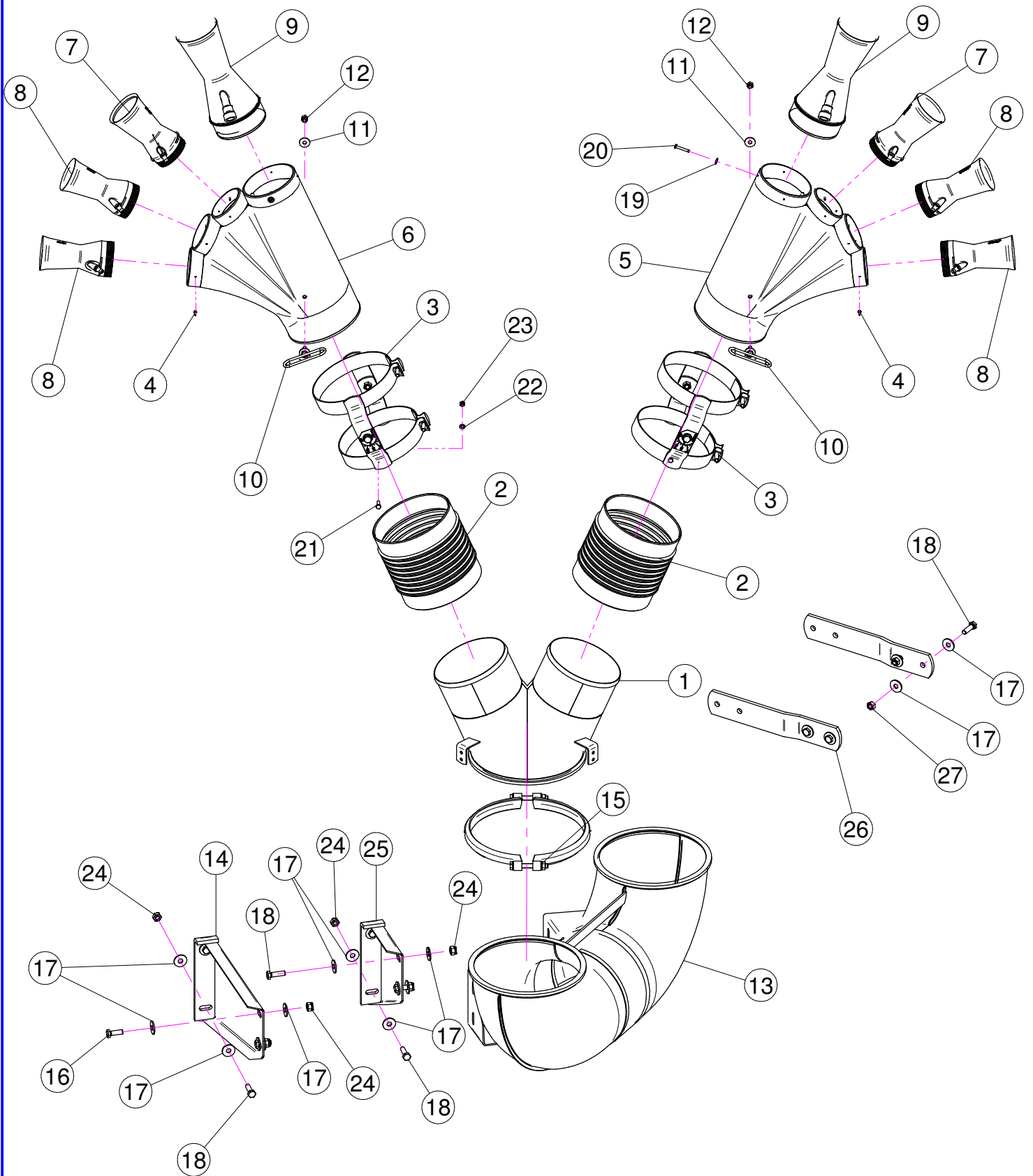


Sez. T28 (π)
Prolunghe
Extension

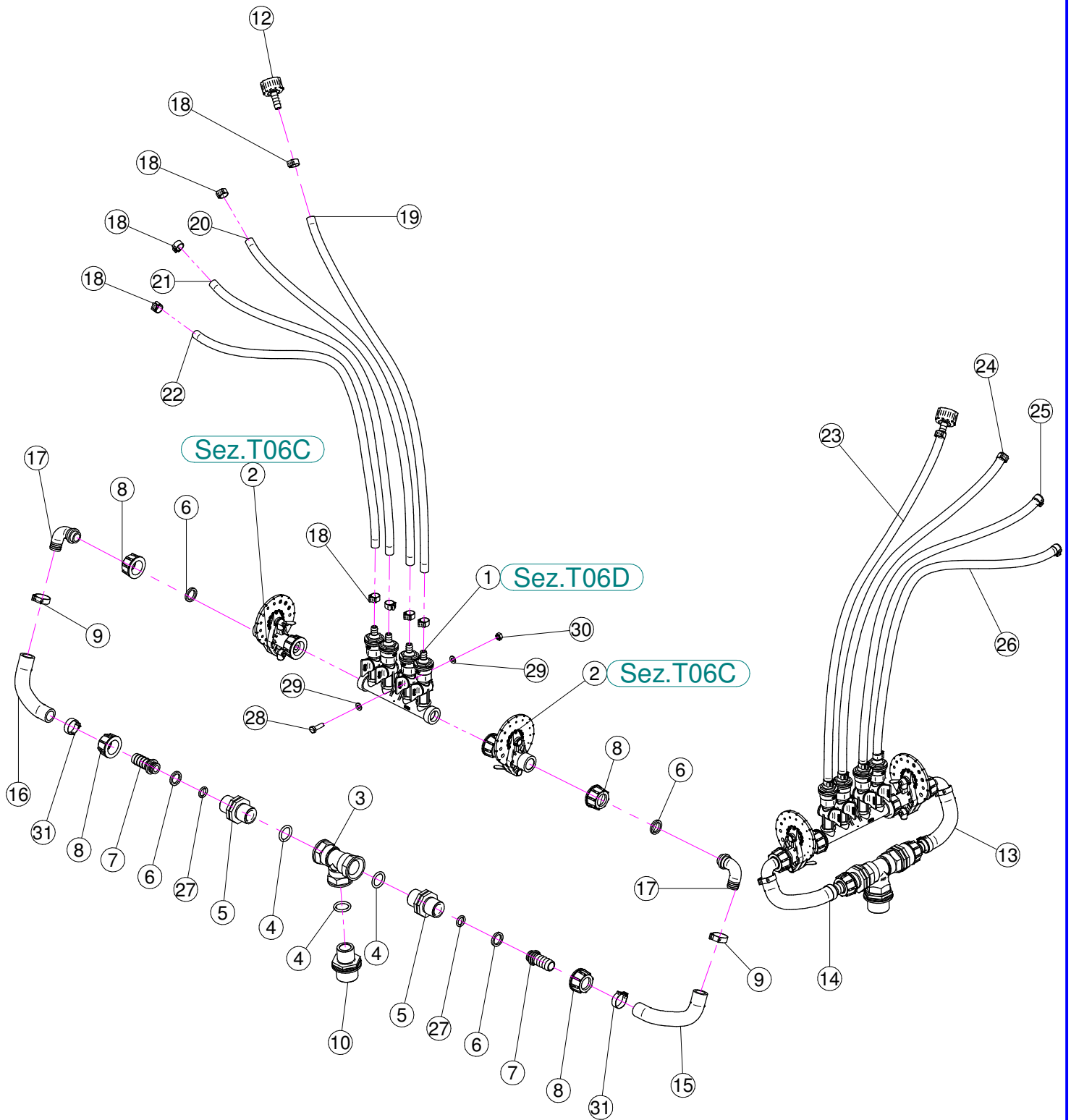
Sez. T03
Condotto dell'aria
Air duct



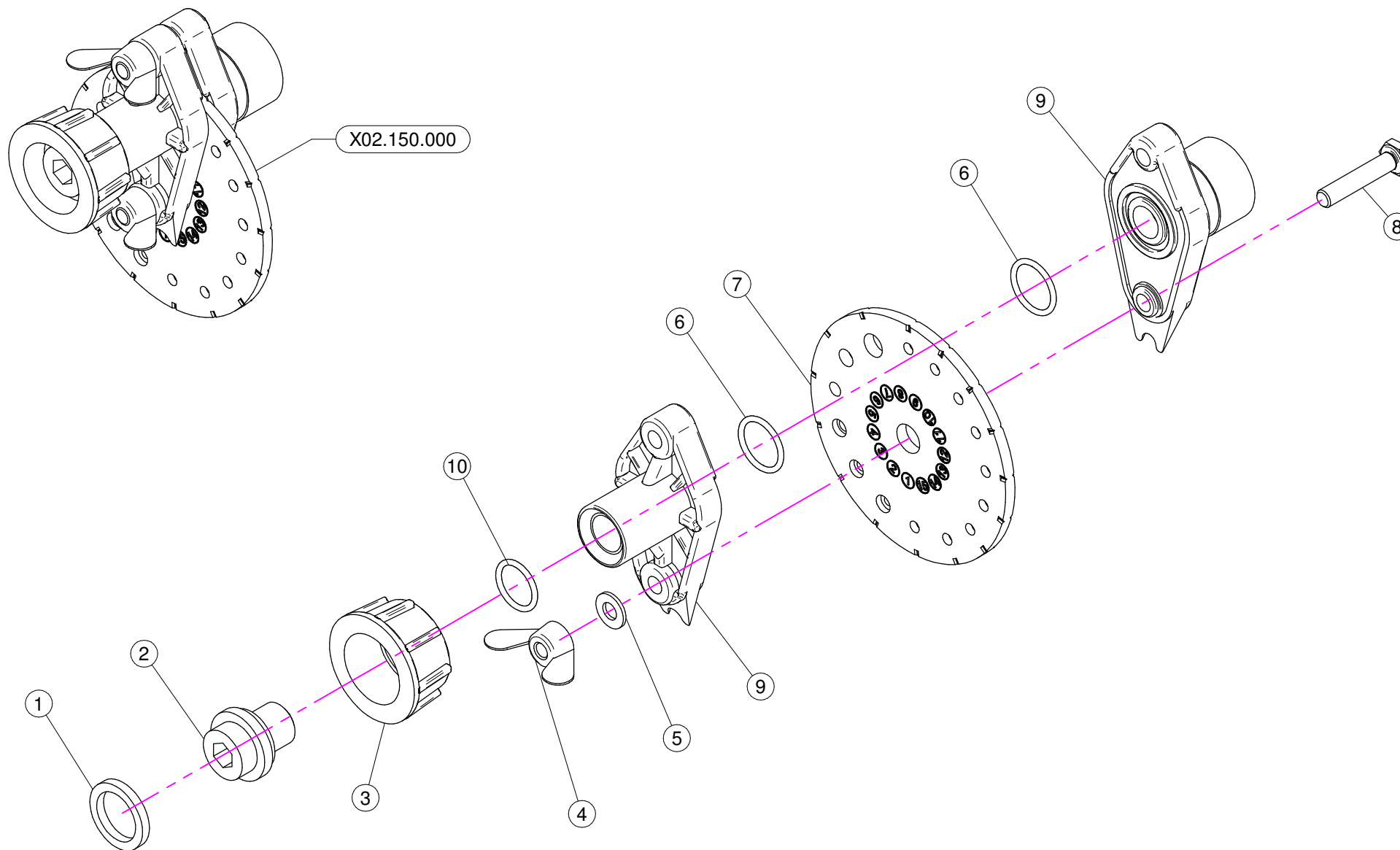
Sez. T24 (π)
Movimentazione Idraulica
Hydraulic Movement



N°	Doc. Number	Titolo	Title	Q.tà
1	X50.220.000	CORPO Ø250 CON 2 USCITE Ø175		1
2	X02.146.010	MANICOTTO FLESSIBILE D.180	FLEXIBLE SLEEVE	2
3	X02.804.000	FASCETTA SNODATA	CLAMP	2
4	XTA.03.9.016I	VITE AUTOFILETTANTE D. 3,9x16 INOX	SELF-THREADED D. 3,9x16	18
5	X00.533.000	CORPO GETTO OLIVO	OLIVE BODY	1
6	X00.533.100	CORPO GETTO OLIVO	OLIVE BODY	1
7	X10.22.080	DIFFUSORE 22/80 CON TUBETTO	NOZZLE 22/80	2
8	X10.017.080	DIFFUSORE 17/80 CON TUBETTO	NOZZLE 17/80	4
9	X10.027.120	DIFFUSORE 27/120 CON TUBETTO	NOZZLE 27/120	2
10	X21.036.000	FASCETTA PASSATUBI	BRACKET	2
11	XRP.008.024	RONDELLA PIANA LARGA D.8X24	WASHER D.8X24	2
12	XDA.008.0AG	DADO AUTOBLOCCANTE M8	SELF LOCKING NUT M8	2
13	X05.802.050	CURVA A 180° D. 250	ELBOW 180° D. 250	1
14	X05.802.051	STAFFA FISSAGGIO CURVA D.250 A 180°	ELBOW FIXING BRACKET	1
15	X05.813.000	COLLARE D.275	CLAMP D.275	1
16	XTE.010.030T	VITE TE M10 x 30	SCREW TE M10 x 30	2
17	XRP.010.030	RONDELLA PIANA D.10 x 30 mm	WASHER D.10 x 30 mm	24
18	XTE.010.035T	VITE TE 10 x 35	SCREW TE 10 x 35	10
19	XRP.005.015I	RONDELLA PIANA D. 5x15	WASHER D. 5x15	6
20	XRV.4.8.030	RIVETTO D.4,8 x 30	RIVET D.4,8 x 30	6
21	XTE.006.020T	VITE TE M6 x 20	SCREW TE M6 x 20	2
22	XRP.006.000	RONDELLA PIANA D. 6	WASHER D.6	2
23	XD0.06.5588G	DADO M6	NUT M6	2
24	XDA.010.0AG	DADO AUTOBLOCCANTE M10	SELF LOCKING NUT M10	8
25	X05.802.151	STAFFA FISSAGGIO CURVA D.250 A 180°	ELBOW FIXING BRACKET	1
26	X20.765.000	STAFFA FISSAGGIO CERCHIO DI PROTEZIONE	FIXING BUMPER BRACKET	2
27	XD0.10.5587G	DADO M10	NUT M10	4

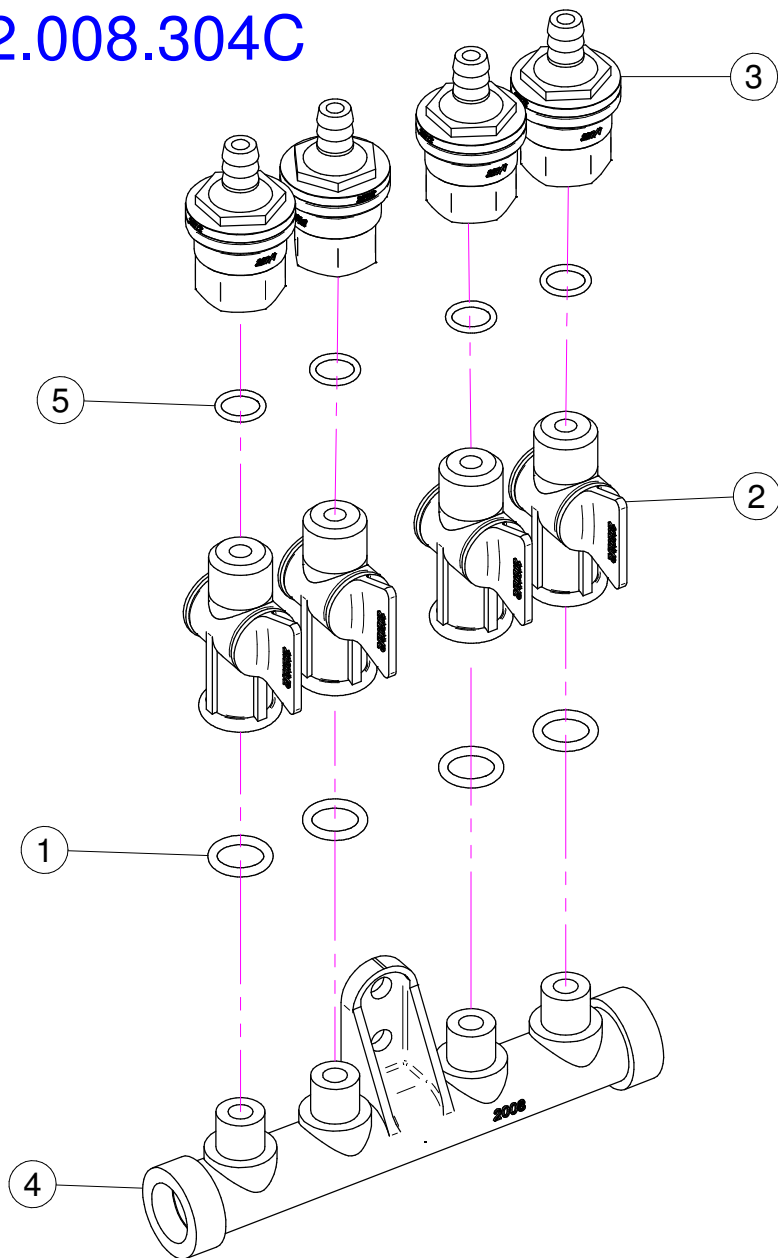


N°	Doc. Number	Titolo	Title	Q.tà
1	X02.008.304C	DISTRIBUTORE LIQUIDI A 4 RUBINETTI	4 TAPS LIQUID MANIFOLD	2
2	X02.150.000	REGOLATORE A DISCO ROTANTE COMPLETO	ROTATION DISK REGULATION	4
3	X02.396.000	RACCORDO A T 3/4" - 3/4" - 3/4" F.	UNION 3/4" - 3/4" - 3/4" F.	2
4	XOR.004.081	OR D.20,22 x 3,53	20,22 x 3,53 O-RING GASKET	6
5	X02.380.000	NIPPLO 3/4"	NIPPLE 3/4"	4
6	X02.349.000	GUARNIZIONE PIANA D.17X23X3	17X23X3 FLAT GASKET	8
7	X02.002.000	RACCORDO DIRITTO 3/4" P.G.18	STRAIGHT UNION 3/4" R.H.18	4
8	X00.055.045	GIRELLO 3/4" GAS	3/4" FLY NUT	8
9	XFC.023,5.025	FASCETTA COBRA 23,5 - 25	KOBRA CLAMP 23,5 - 25	4
10	X02.293.000	RIDUZIONE 1" M - 3/4" M	1" M - 3/4" M REDUCER NIPPLE	2
12	X21.010.000	RACCORDO P.G. DIRITTO D.10 COMPLETO	COMPLETE R.H. D.10 UNION	2
13	X02.211.021	TUBO D.16x23 L=210	HOSE D.16x23 L=210	1
14	X02.211.021	TUBO D.16x23 L=210	HOSE D.16x23 L=210	1
15	X02.211.020	TUBO D.16x23 L=200	HOSE D.16x23 L=200	1
16	X02.211.020	TUBO D.16x23 L=200	HOSE D.16x23 L=200	1
17	X00.055.046	RACCORDO CURVO P.G. D.17	CURVED UNION WITH R.H. D.17	4
18	XFC.013,5.015	FASCETTA COBRA SLO30710	KOBRA CLAMP	16
19	X02.217.067	TUBO D.8x13 L=670	HOSE D.8x13 L=670	1
20	X02.217.062	TUBO D.8x13 L=620	HOSE D.8x13 L=620	1
21	X02.217.058	TUBO D.8x13 L=580	HOSE D.8x13 L=580	1
22	X02.217.058	TUBO D.8x13 L=580	HOSE D.8x13 L=580	1
23	X02.217.067	TUBO D.8x13 L=670	HOSE D.8x13 L=670	1
24	X02.217.062	TUBO D.8x13 L=620	HOSE D.8x13 L=620	1
25	X02.217.058	TUBO D.8x13 L=580	HOSE D.8x13 L=580	1
26	X02.217.058	TUBO D.8x13 L=580	HOSE D.8x13 L=580	1
27	XOR.000.117	OR D. 13,1x18,34x2,62	13,1x18,34x2,62 O-RING GASKET	4
28	XTE.006.020T	VITE TE M6 x 20	SCREW TE M6 x 20	4
29	XRP.006.000	RONDELLA PIANA D. 6	WASHER D.6	8
30	XD0.06.5588G	DADO M6	NUT M6	4
31	XFC.022,5.024	FASCETTA COBRA 22,5 - 24	KOBRA CLAMP 22,5 - 24	4



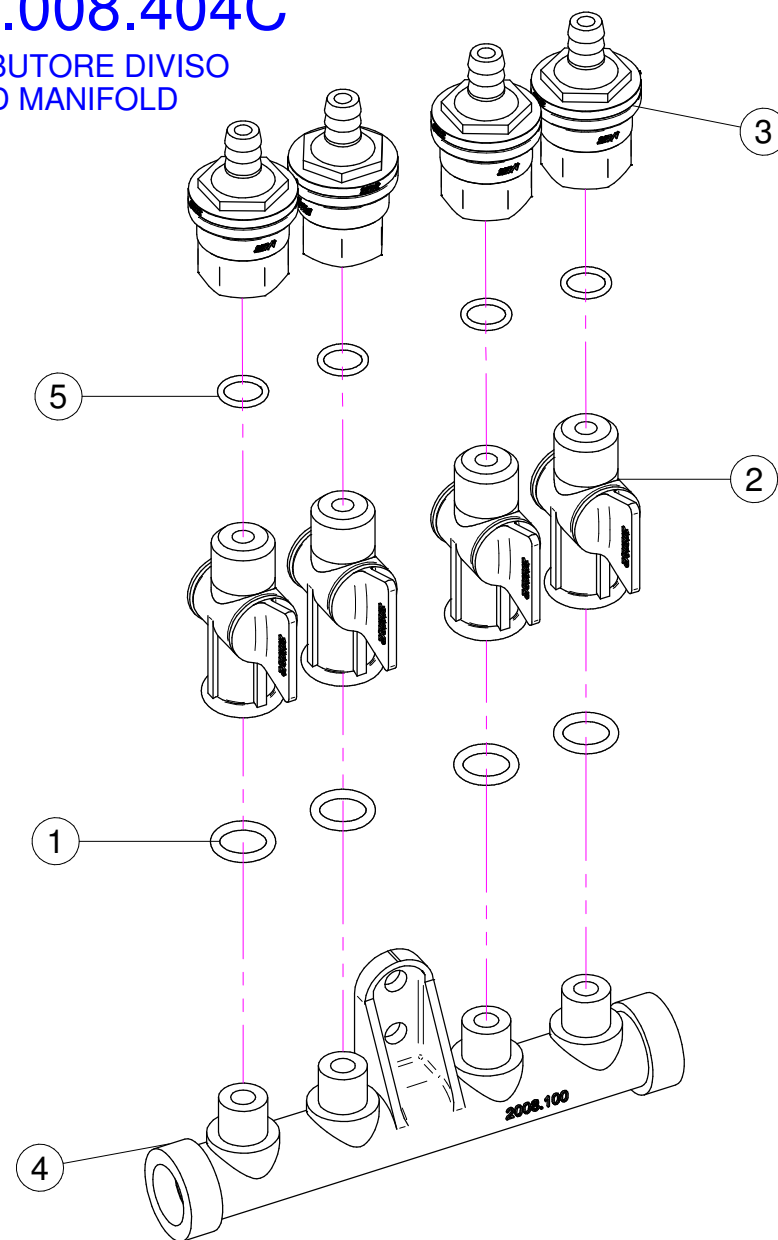
N°	Doc. Number	Titolo	Title	Q.tà	Note
1	X02.349.000	GUARNIZIONE PIANA D.17X23X3	17X23X3 FLAT GASKET	1	
2	X02.117.000	NIPPLO M14X1.5/D.17	ADAPTOR NIPPLE	1	
3	X00.055.045	GIRELLO 3/4" GAS	3/4" FLY NUT	1	
4	XDF.OTT.006	DADO AD ALETTE IN OTTONE M6	WING NUT M6	2	
5	XRP.006.000I	RONDELLA PIANA D. 6 INOX	INOX WASHER D.6	2	
6	XOR.002.062	OR D.15.6X1.78	D.15.6X1.78 OR	2	
7	X02.148.000	DISCO ROTANTE PER REGOLATORE	REGULATOR DISK	1	
8	XTE.006.030I	VITE TE M6X30 INOX	INOX M6X30 BOLT	2	
9	X02.147.500	COPPIA DI SEMICORPO REGOLATORE	REGULATOR HALF-BODY	1	
10	XOR.002.050	OR 12,43 x 1,78 NBR70	12,43 x 1,78 NBR70 O-RING GASKET	1	

X02.008.304C



X02.008.404C

DISTRIBUTORE DIVISO
DIVIDED MANIFOLD

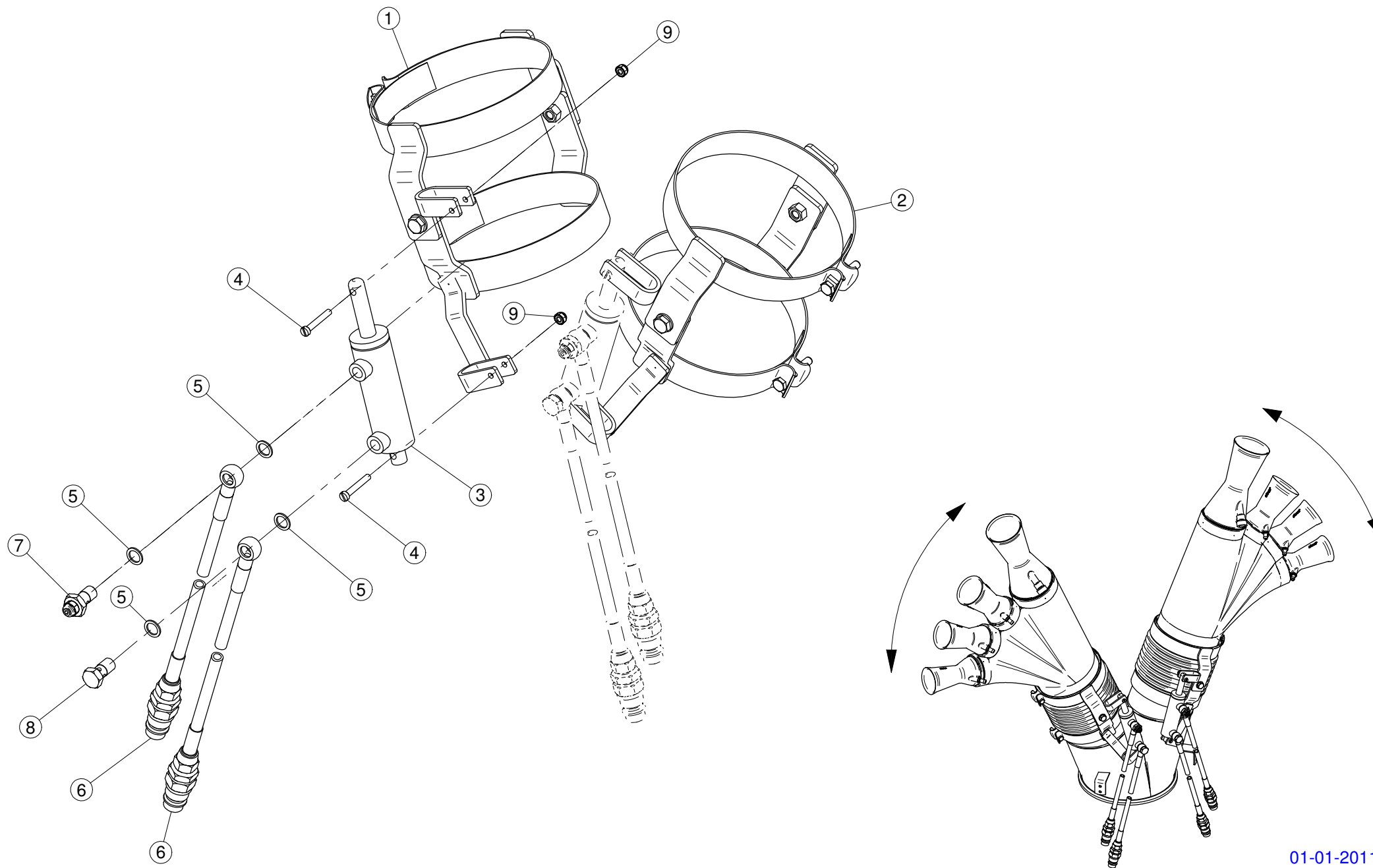


X02.008.304C

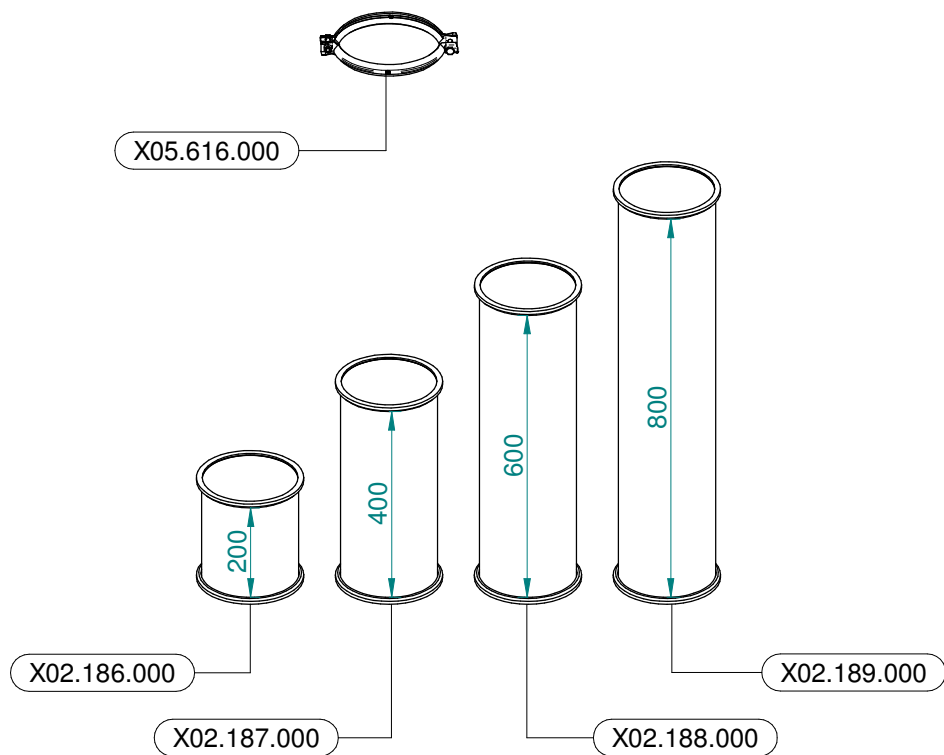
N°	Doc. Number	Titolo	Title	Q.tà	Note
1	XOR.000.117	OR D. 13,1x18,34x2,62	13,1x18,34x2;62 O-RING GASKET	4	
2	X20.202.100	RUBINETTO P.G. D.10 F.1/4" GAS TAGLIATO	TAP ASSEMBLY	4	
3	X00.227.01C	DISPOSITIVO ANTIGOCCIA	ANTDRIP VALVE	4	
4	X02.008.000	DISTRIBUTORE LIQUIDO TESTATE	SPRAYHEADS LIQUID MANIFOLD	1	
5	XOR.002.043	OR 10.82X14.38X1.78 NBR70	10.82X14.38X1.78 NBR70 O-RING GASKET	4	

X02.008.404C

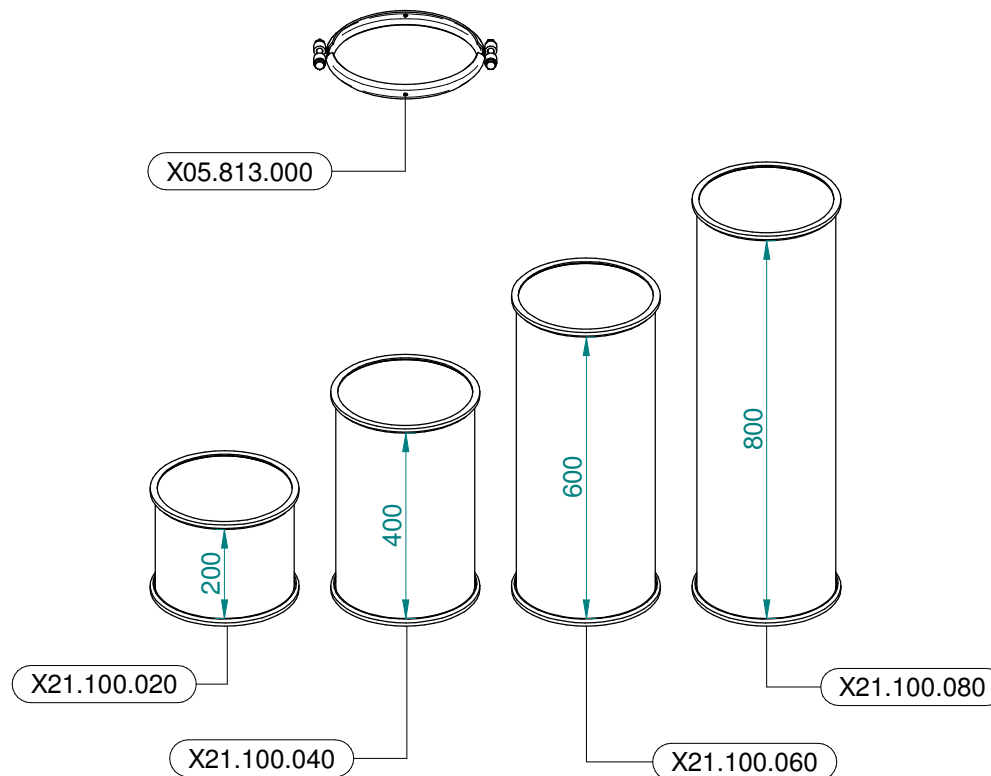
N°	Doc. Number	Titolo	Title	Q.tà	Note
1	XOR.000.117	OR D. 13,1x18,34x2,62	13,1x18,34x2;62 O-RING GASKET	4	
2	X20.202.100	RUBINETTO P.G. D.10 F.1/4" GAS TAGLIATO	TAP ASSEMBLY	4	
3	X00.227.01C	DISPOSITIVO ANTIGOCCIA	ANTDRIP VALVE	4	
4	X02.008.100	DISTRIBUTORE LIQUIDO TESTATE DIVISO	DIVIDED SPRAYHEADS LIQUID MANIFOLD	1	
5	XOR.002.043	OR 10.82X14.38X1.78 NBR70	10.82X14.38X1.78 NBR70 O-RING GASKET	4	



N°	Doc. Number	Titolo	Title	Q.tà	Note
1	X02.804.100	COPPIA FASCETTE SNODATE D.180 CON ATTACCO PISTONE	CLAMP D.180 WITH JACK BRACKET	1	
2	X02.804.200	COPPIA FASCETTE SNODATE D.180 CON ATTACCO PISTONE	CLAMP D.180 WITH JACK BRACKET	1	
3	X02.840.04C	MARTINETTO COMPLETO D.20/30 CORSA 60	JACK	2	
4	XTC.06.40.07I	VITE T.CIL. M6 x 40 INOX	INOX SCREW M6 x 40	4	
5	X02.472.000	RONDELLA DI RAME	COPPER WASHER	8	
6	X20.900.370	TUBO OLIO PER MARTINETTO L=3700	OIL PIPE FOR JACK L=3700	4	
7	X20.718.000	REGOLATORE PORTATA IDRAULICA	FLOW REGULATOR	2	
8	X02.408.000	RACCORDO DRITTO PER OCCHIO	JACK EYE RIGHT UNION	2	
9	XDA.006.0AG	DADO AUTOBLOCCANTE M6 ALTO PG	SELF-LOCKING NUT - HIGH M6	4	



Ø 175
 Plus 42 - 45 - 50
 Blitz 45 - 50
 Link 50



Ø 250
 Plus 55
 Blitz 55
 Link 55