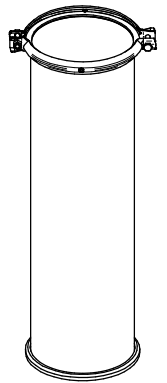
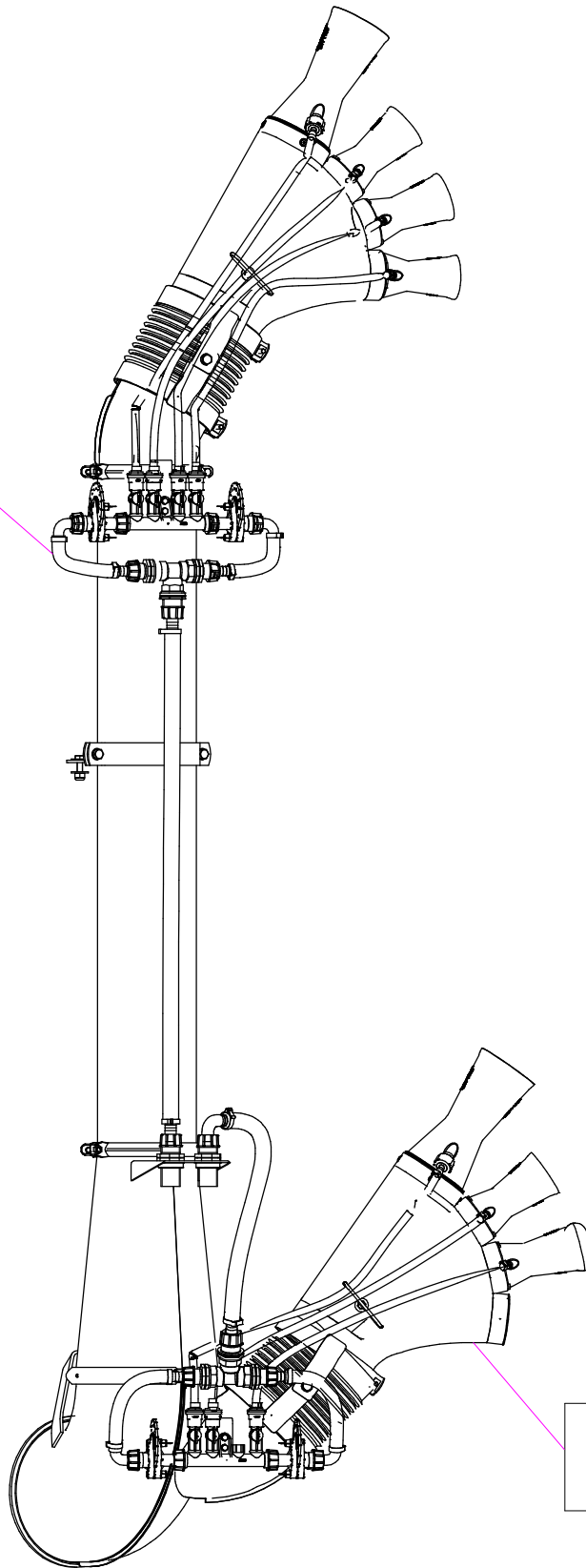
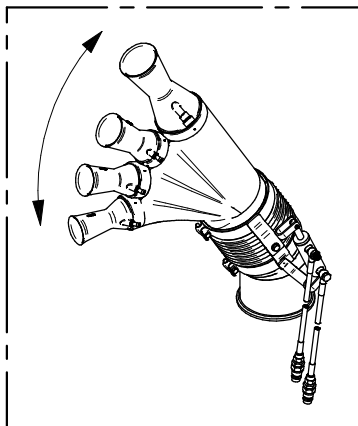


Sez. T06
Circuito idraulico
Plumbing of liquids



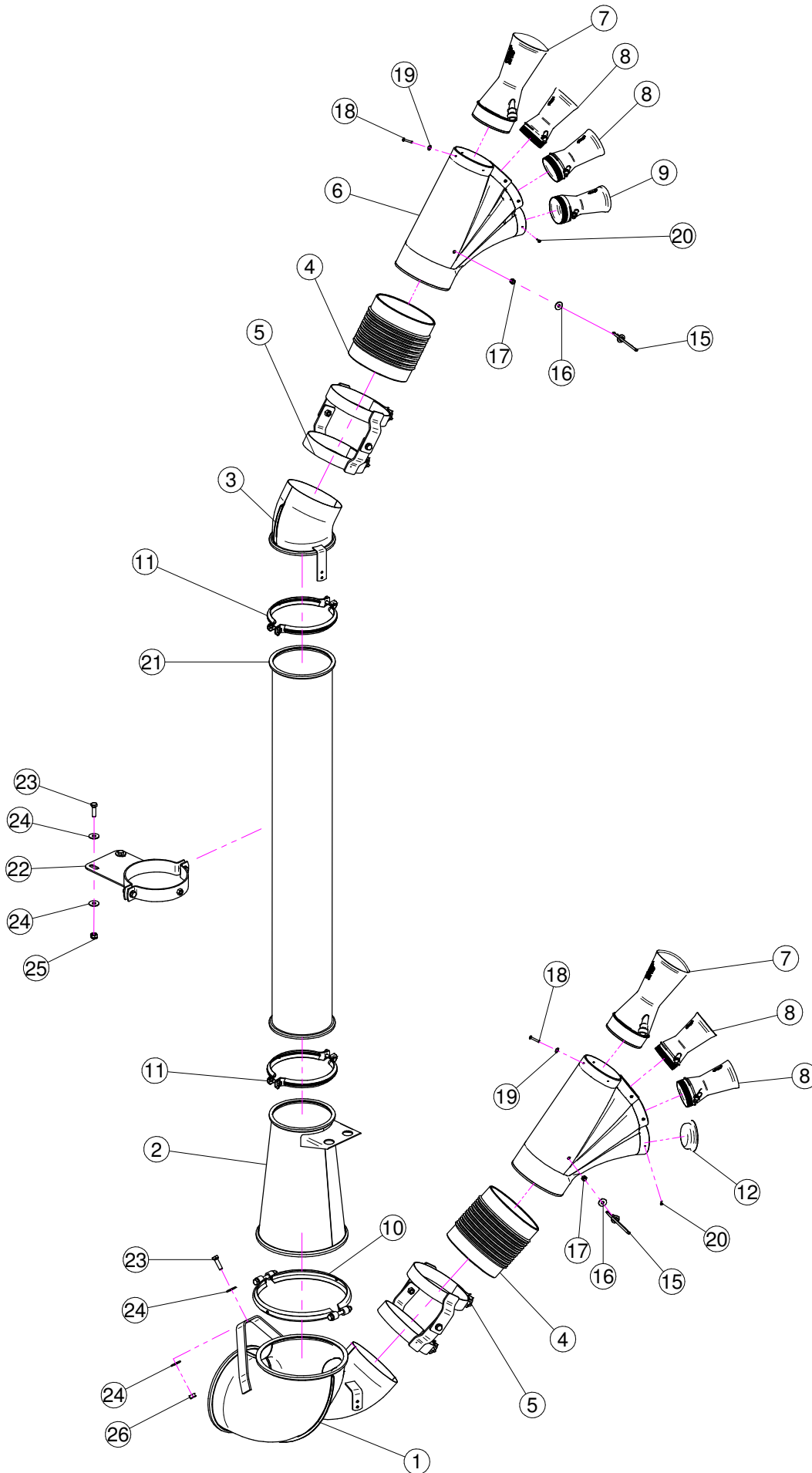
Sez. T28 (a)
Prolunghe
Extension



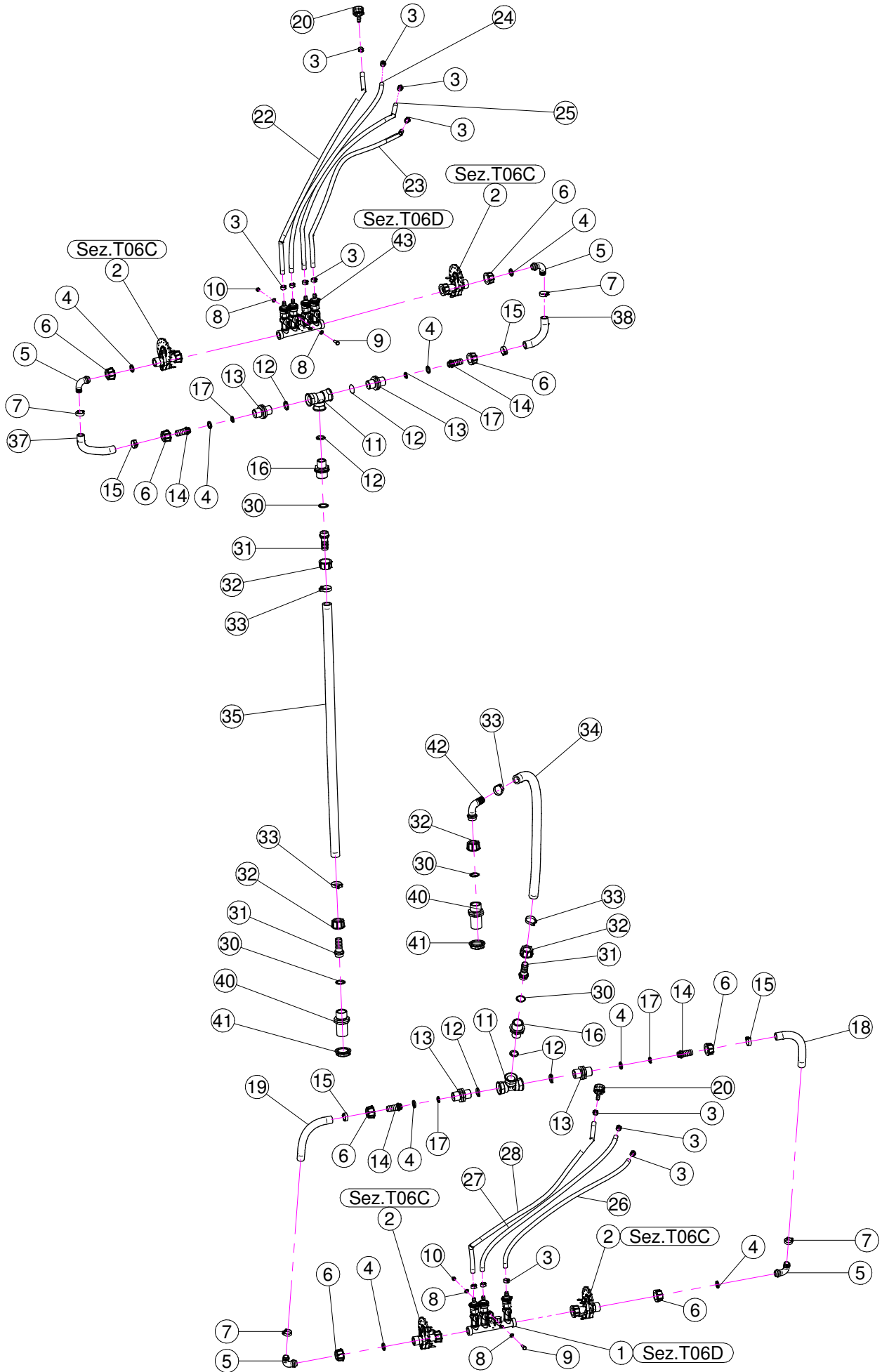
Sez. T24 (a)
Movimentazione Idraulica
Hydraulic Movement

Sez. T03
Condotto dell'aria
Air duct

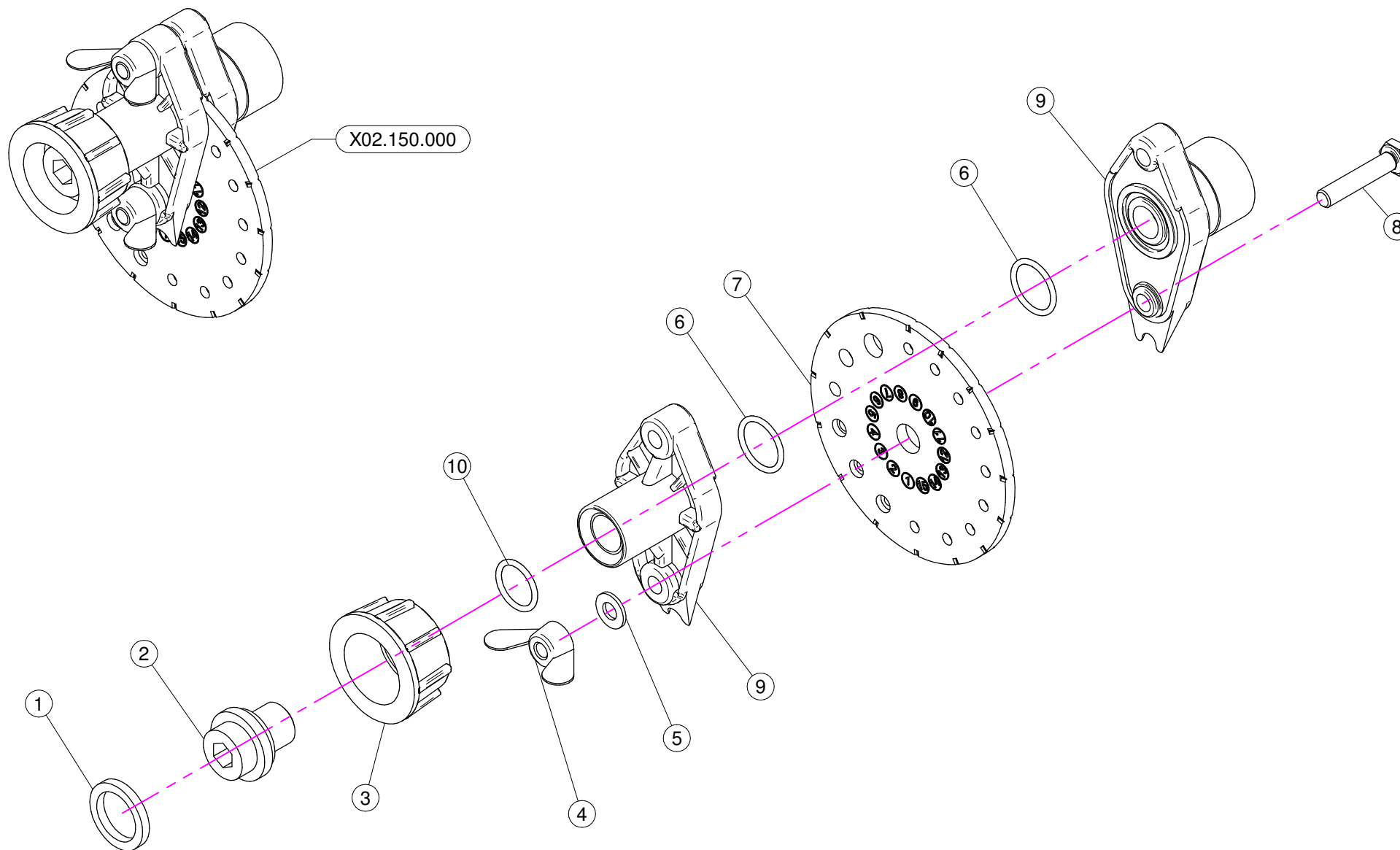
(a) A richiesta / Optional Devices



N°	Doc. Number	Titolo	Title	Q.tà
1	X05.843.500	CORPO D.250 CON 1 USCITA D.175	BODY D.250 WITH 1 OUTLETS D.175	1
2	X20.252.200	RIDUZIONE DA Ø250 A Ø175 L=400	REDUCTION FROM Ø250 TO Ø175 L=400	1
3	X20.650.600	CURVA D.175 30°	ELBOW D.175 30°	1
4	X02.146.010	MANICOTTO FLESSIBILE D.180	FLEXIBLE SLEEVE	2
5	X02.804.000	FASCETTA SNODATA	CLAMP	2
6	X00.533.000	CORPO GETTO OLIVO	OLIVE BODY	2
7	X10.037.120	DIFFUSORE 37/120 CON TUBETTO	NOZZLE 37/120	2
8	X10.22.080	DIFFUSORE 22/80	NOZZLE 22/80	4
9	X10.017.080	DIFFUSORE 17/80 CON TUBETTO	NOZZLE 17/80	1
10	X05.813.000	COLLARE D.275	CLAMP D.275	1
11	X05.616.000	COLLARE PER TUBI D.175	PIPE CLAMP D.175	2
12	X21.188.000	TAPPO PER BOCCHETTA D.80	CAP	1
15	X21.036.000	FASCETTA PASSATUBI	BRACKET	2
16	XRP.008.024	RONDELLA PIANA LARGA D.8X24	WASHER D.8X24	2
17	XDA.008.0AG	DADO AUTOBLOCCANTE M8	SELF LOCKING NUT M8	2
18	XRV.4,8.030	RIVETTO D.4,8 x 30	RIVET D.4,8 x 30	8
19	XRP.005.015I	RONDELLA PIANA D. 5x15	WASHER D. 5x15	8
20	XTA.03,9.016I	VITE AUTOFILETTANTE D. 3,9x16 INOX	SELF-THREATED D. 3,9x16	15
21	X21.300.120	PROLUNGA D.175 X 1200	EXTENSION D.175 X 1200	1
22	X20.503.500	FASCETTA D.175 FISSAGGIO TESTATE	D.175 CLAMP HEADS FIXING	1
23	XTE.010.035T	VITE TE 10 x 35	SCREW TE 10 x 35	3
24	XRP.010.030	RONDELLA PIANA D.10 x 30 mm	WASHER D.10 x 30 mm	6
25	XDA.010.0AG	DADO AUTOBLOCCANTE M10	SELF LOCKING NUT M10	2
26	XD0.10.5587G	DADO M10	NUT M10	1

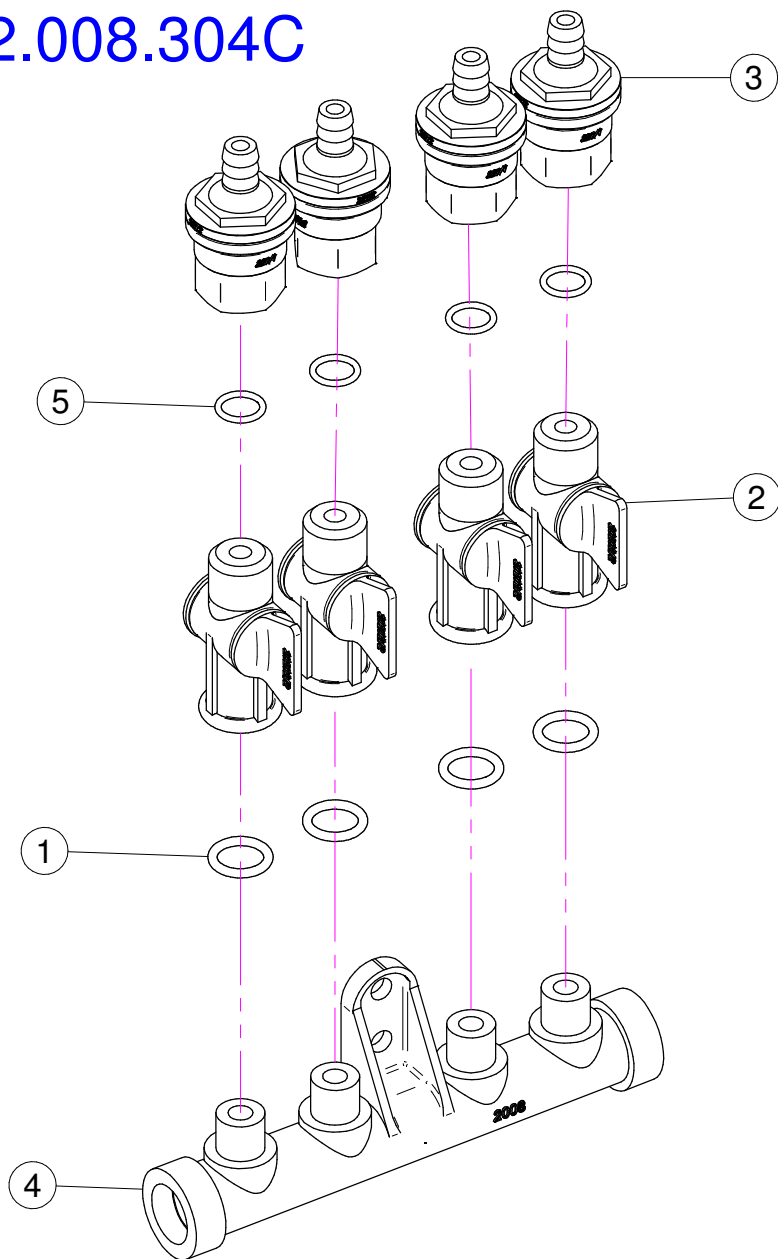


N°	Doc. Number	Titolo	Title	Q.tà
1	X02.008.303C	DISTRIBUTORE LIQUIDI A 3 RUBINETTI	3 TAPS LIQUID MANIFOLD	1
2	X02.150.000	REGOLATORE A DISCO ROTANTE COMPLETO	ROTATION DISK REGULATION	4
3	XFC.013,5.015	FASCETTA COBRA SLO30710	KOBRA CLAMP	14
4	X02.349.000	GUARNIZIONE PIANA D.17X23X3	17X23X3 FLAT GASKET	8
5	X00.055.046	RACCORDO CURVO P.G. D.17	CURVED UNION WITH R.H. D.17	4
6	X00.055.045	GIRELLO 3/4" GAS	3/4" FLY NUT	8
7	XFC.024,5.026	FASCETTA COBRA 24,5 - 26	KOBRA CLAMP 24,5 - 26	4
8	XRP.006.000	RONDELLA PIANA D. 6	WASHER D.6	8
9	XTE.006.020T	VITE TE M6 x 20	SCREW TE M6 x 20	4
10	XD0.06.5588G	DADO M6	NUT M6	4
11	X02.396.000	RACCORDO A T 3/4" - 3/4" - 3/4" F.	UNION 3/4" - 3/4" - 3/4" F.	2
12	XOR.004.081	OR D.20,22 x 3,53	20,22 x 3,53 O-RING GASKET	6
13	X02.380.000	NIPPLO 3/4"	NIPPLE 3/4"	4
14	X02.002.000	RACCORDO DIRITTO 3/4" P.G.18	STRAIGHT UNION 3/4" R.H.18	4
15	XFC.022,5.024	FASCETTA COBRA 22,5 - 24	KOBRA CLAMP 22,5 - 24	4
16	X02.293.000	RIDUZIONE 1" M - 3/4" M	1" M - 3/4" M REDUCER NIPPLE	2
17	XOR.000.117	OR D. 13,1x18,34x2,62	13,1x18,34x2,62 O-RING GASKET	4
18	X02.211.020	TUBO D.16x23 L=200	HOSE D.16x23 L=200	1
19	X02.211.020	TUBO D.16x23 L=200	HOSE D.16x23 L=200	1
20	X21.010.000	RACCORDO P.G. DIRITTO D.10 COMPLETO	COMPLETE R.H. D.10 UNION	2
22	X02.217.071	TUBO D.8x13 L=710	HOSE D.8x13 L=710	1
23	X02.217.061	TUBO D.8x13 L=610	HOSE D.8x13 L=610	1
24	X02.217.068	TUBO D.8x13 L=680	HOSE D.8x13 L=680	1
25	X02.217.063	TUBO D.8x13 L=630	HOSE D.8x13 L=630	1
26	X02.217.056	TUBO D.8x13 L=560	HOSE D.8x13 L=560	1
27	X02.217.060	TUBO D.8x13 L=600	HOSE D.8x13 L=600	1
28	X02.217.066	TUBO D.8x13 L=660	HOSE D.8x13 L=660	1
30	XOR.000.132	OR D.23,81 x 2,62	23,81 x 2,62 O-RING GASKET	4
31	X00.055.022	RACCORDO DIRITTO P.G. D.19	STRAIGHT HOSE R.H. D.19	3
32	X00.055.24.2	GIRELLO 1" GAS	1" FLY NUT	4
33	XFC.027,5.029	FASCETTA COBRA 27,08 - W8	KOBRA CLAMP 27,08 - W8	4
34	X02.212.044	TUBO D.19x28 L=440	HOSE D.19x28 L=440	1
35	X02.212.084	TUBO D.19x28 L=840	HOSE D.19x28 L=840	1
37	X02.211.020	TUBO D.16x23 L=200	HOSE D.16x23 L=200	1
38	X02.211.020	TUBO D.16x23 L=200	HOSE D.16x23 L=200	1
40	X00.055.034.L	NIPPLO 1" / 1" GAS FILETTO LUNGO	LONG NIPPLE 1" / 1" GAS	2
41	X00.542.000	GHIERA 1"	NUT 1"	2
42	X00.055.038	RACCORDO CURVO A P.G. D.19	CURVED UNION WITH R.H. D.19	1
43	X02.008.304C	DISTRIBUTORE LIQUIDI A 4 RUBINETTI	4 TAPS LIQUID MANIFOLD	1



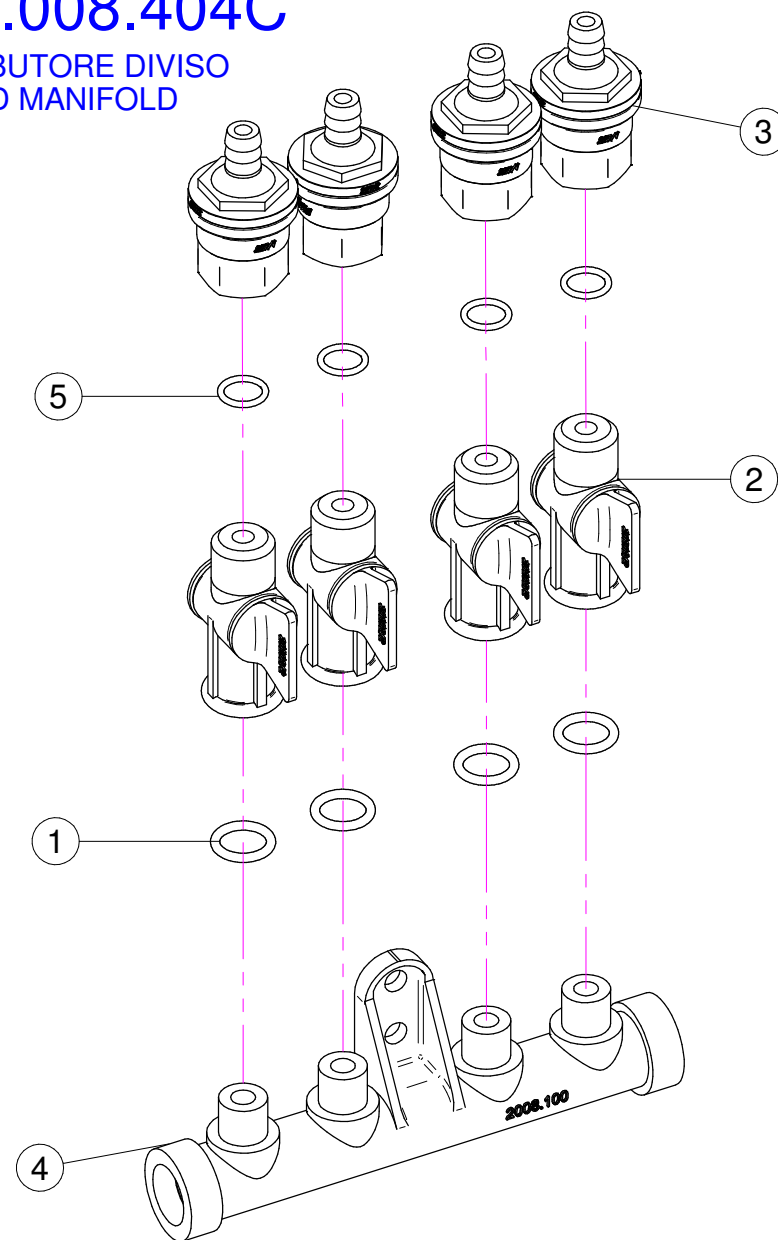
N°	Doc. Number	Titolo	Title	Q.tà	Note
1	X02.349.000	GUARNIZIONE PIANA D.17X23X3	17X23X3 FLAT GASKET	1	
2	X02.117.000	NIPPLO M14X1.5/D.17	ADAPTOR NIPPLE	1	
3	X00.055.045	GIRELLO 3/4" GAS	3/4" FLY NUT	1	
4	XDF.OTT.006	DADO AD ALETTE IN OTTONE M6	WING NUT M6	2	
5	XRP.006.000I	RONDELLA PIANA D. 6 INOX	INOX WASHER D.6	2	
6	XOR.002.062	OR D.15.6X1.78	D.15.6X1.78 OR	2	
7	X02.148.000	DISCO ROTANTE PER REGOLATORE	REGULATOR DISK	1	
8	XTE.006.030I	VITE TE M6X30 INOX	INOX M6X30 BOLT	2	
9	X02.147.500	COPPIA DI SEMICORPO REGOLATORE	REGULATOR HALF-BODY	1	
10	XOR.002.050	OR 12,43 x 1,78 NBR70	12,43 x 1,78 NBR70 O-RING GASKET	1	

X02.008.304C



X02.008.404C

DISTRIBUTORE DIVISO
DIVIDED MANIFOLD

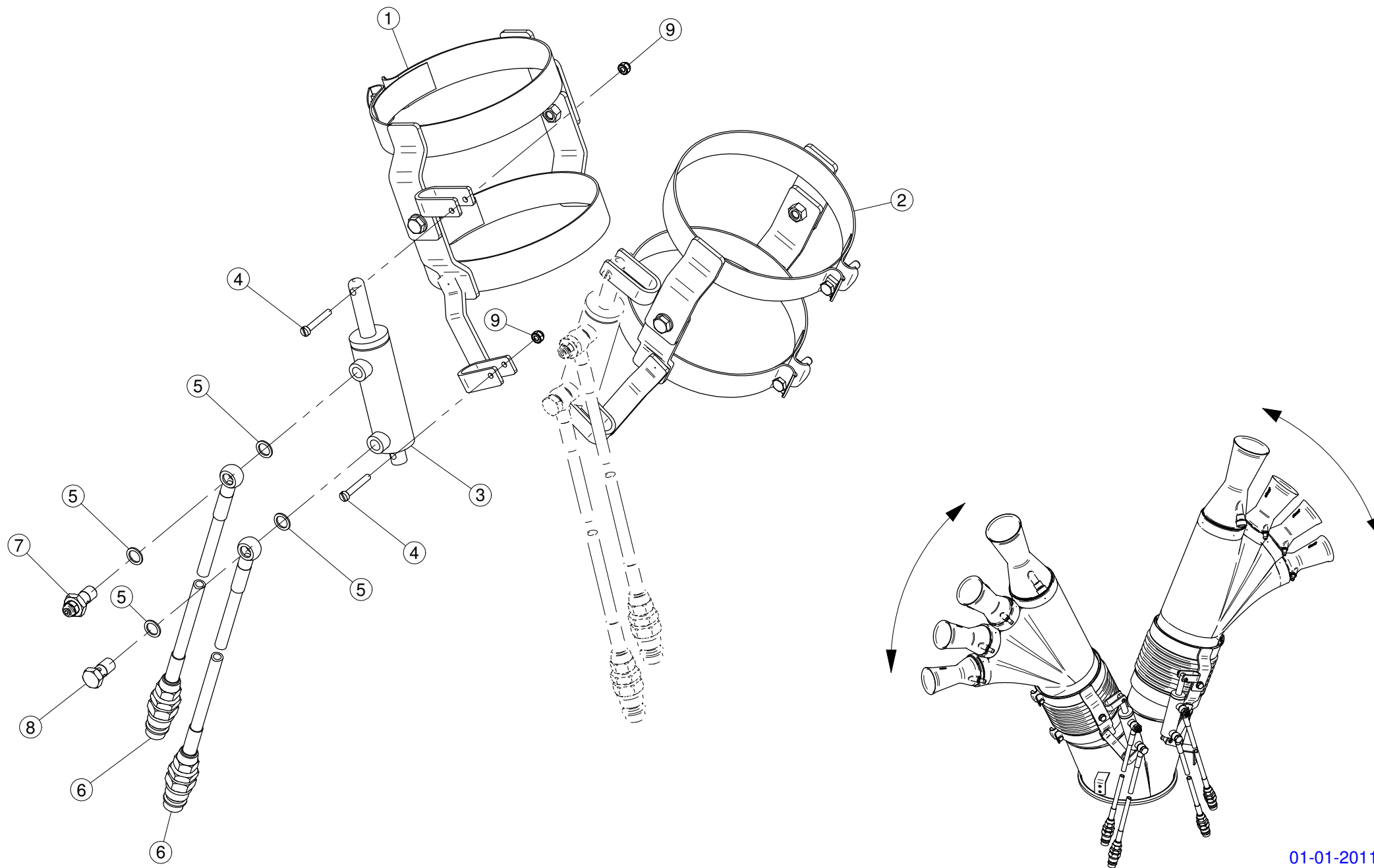


X02.008.304C

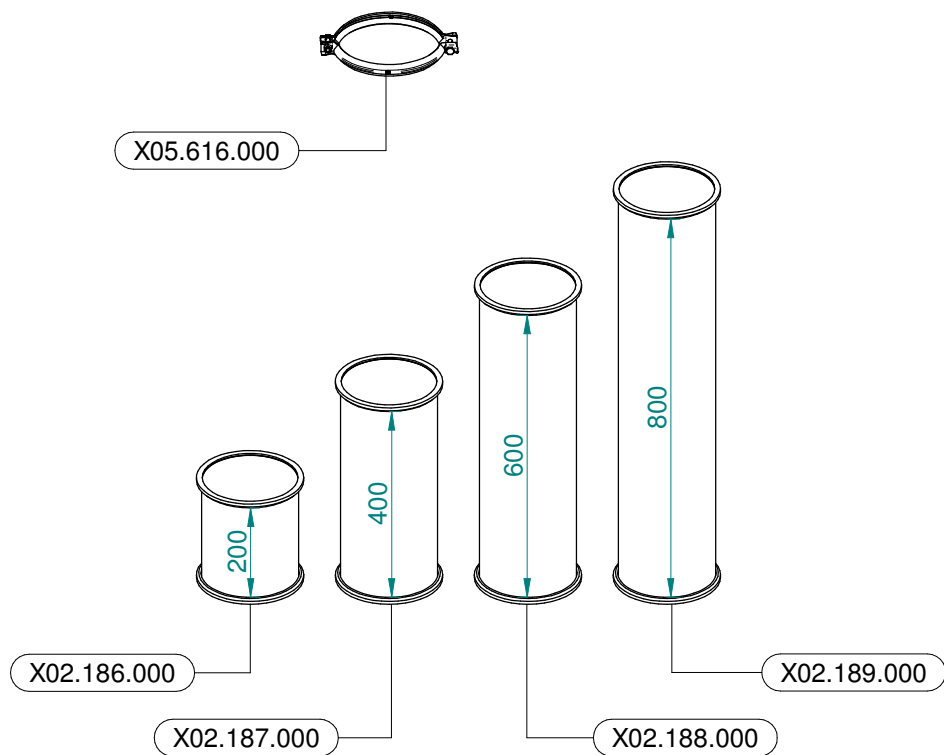
N°	Doc. Number	Titolo	Title	Q.tà	Note
1	XOR.000.117	OR D. 13,1x18,34x2,62	13,1x18,34x2;62 O-RING GASKET	4	
2	X20.202.100	RUBINETTO P.G. D.10 F.1/4" GAS TAGLIATO	TAP ASSEMBLY	4	
3	X00.227.01C	DISPOSITIVO ANTIGOCCIA	ANTDRIP VALVE	4	
4	X02.008.000	DISTRIBUTORE LIQUIDO TESTATE	SPRAYHEADS LIQUID MANIFOLD	1	
5	XOR.002.043	OR 10.82X14.38X1.78 NBR70	10.82X14.38X1.78 NBR70 O-RING GASKET	4	

X02.008.404C

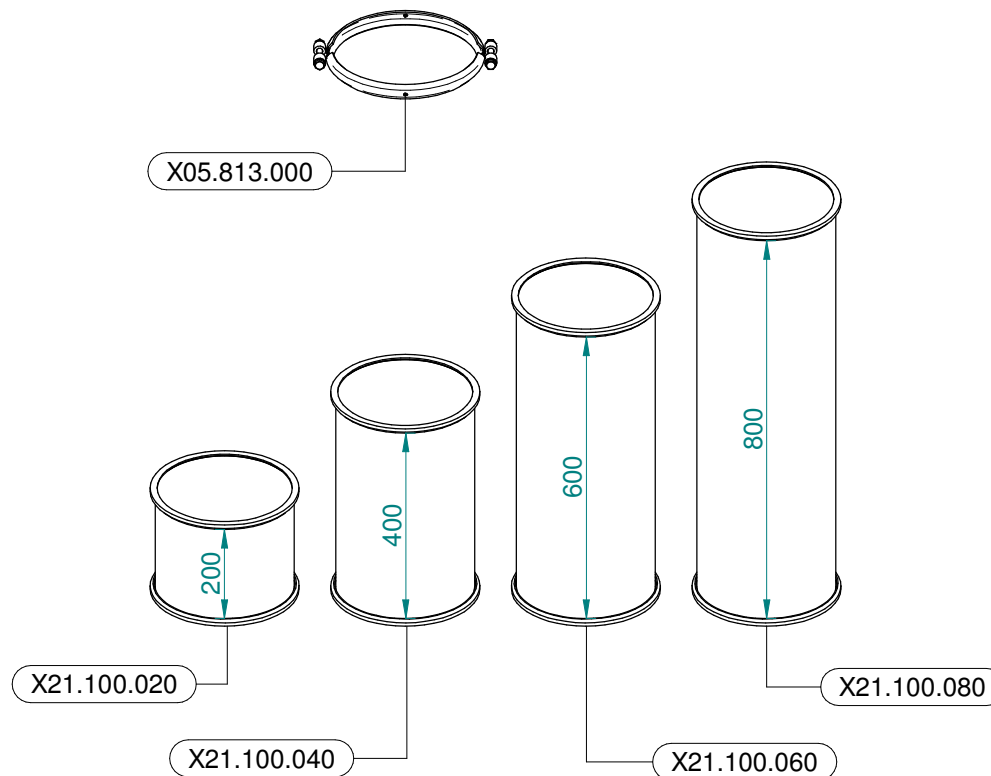
N°	Doc. Number	Titolo	Title	Q.tà	Note
1	XOR.000.117	OR D. 13,1x18,34x2,62	13,1x18,34x2;62 O-RING GASKET	4	
2	X20.202.100	RUBINETTO P.G. D.10 F.1/4" GAS TAGLIATO	TAP ASSEMBLY	4	
3	X00.227.01C	DISPOSITIVO ANTIGOCCIA	ANTDRIP VALVE	4	
4	X02.008.100	DISTRIBUTORE LIQUIDO TESTATE DIVISO	DIVIDED SPRAYHEADS LIQUID MANIFOLD	1	
5	XOR.002.043	OR 10.82X14.38X1.78 NBR70	10.82X14.38X1.78 NBR70 O-RING GASKET	4	



N°	Doc. Number	Titolo	Title	Q.tà	Note
1	X02.804.100	COPPIA FASCETTE SNODATE D.180 CON ATTACCO PISTONE	CLAMP D.180 WITH JACK BRACKET	1	
2	X02.804.200	COPPIA FASCETTE SNODATE D.180 CON ATTACCO PISTONE	CLAMP D.180 WITH JACK BRACKET	1	
3	X02.840.04C	MARTINETTO COMPLETO D.20/30 CORSA 60	JACK	2	
4	XTC.06.40.07I	VITE T.CIL. M6 x 40 INOX	INOX SCREW M6 x 40	4	
5	X02.472.000	RONDELLA DI RAME	COPPER WASHER	8	
6	X20.900.680	TUBO OLIO PER MARTINETTO L=6800	OIL PIPE FOR JACK L=6800	4	
7	X20.718.000	REGOLATORE PORTATA IDRAULICA	FLOW REGULATOR	2	
8	X02.408.000	RACCORDO DRITTO PER OCCHIO	JACK EYE RIGHT UNION	2	
9	XDA.006.0AG	DADO AUTOBLOCCANTE M6 ALTO PG	SELF-LOCKING NUT - HIGH M6	4	



Ø 175
Plus 42 - 45 - 50
Blitz 45 - 50
Link 50



Ø 250
Plus 55
Blitz 55
Link 55