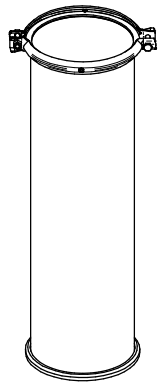
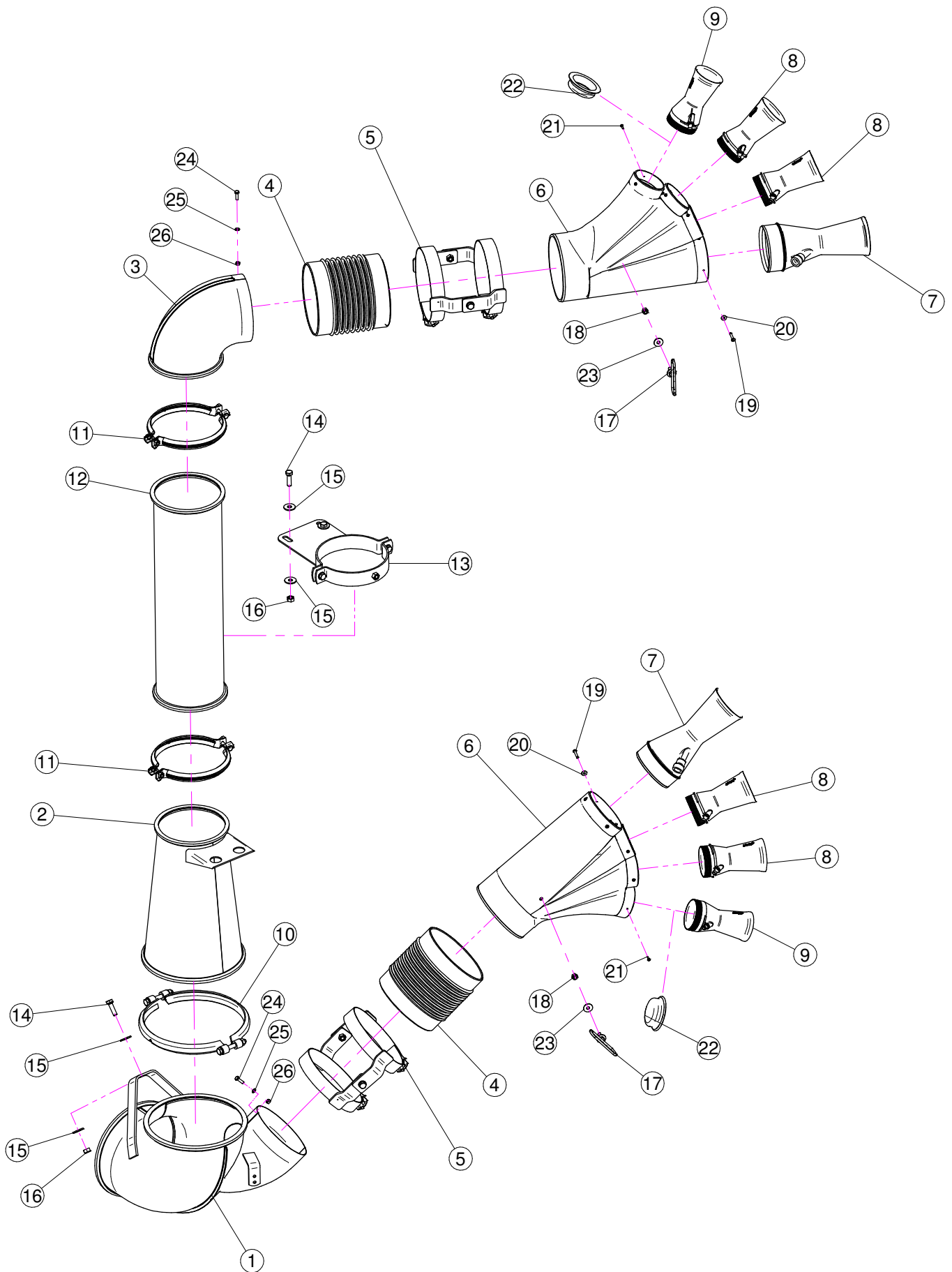


Sez. T06
Circuito idraulico
Plumbing of liquids

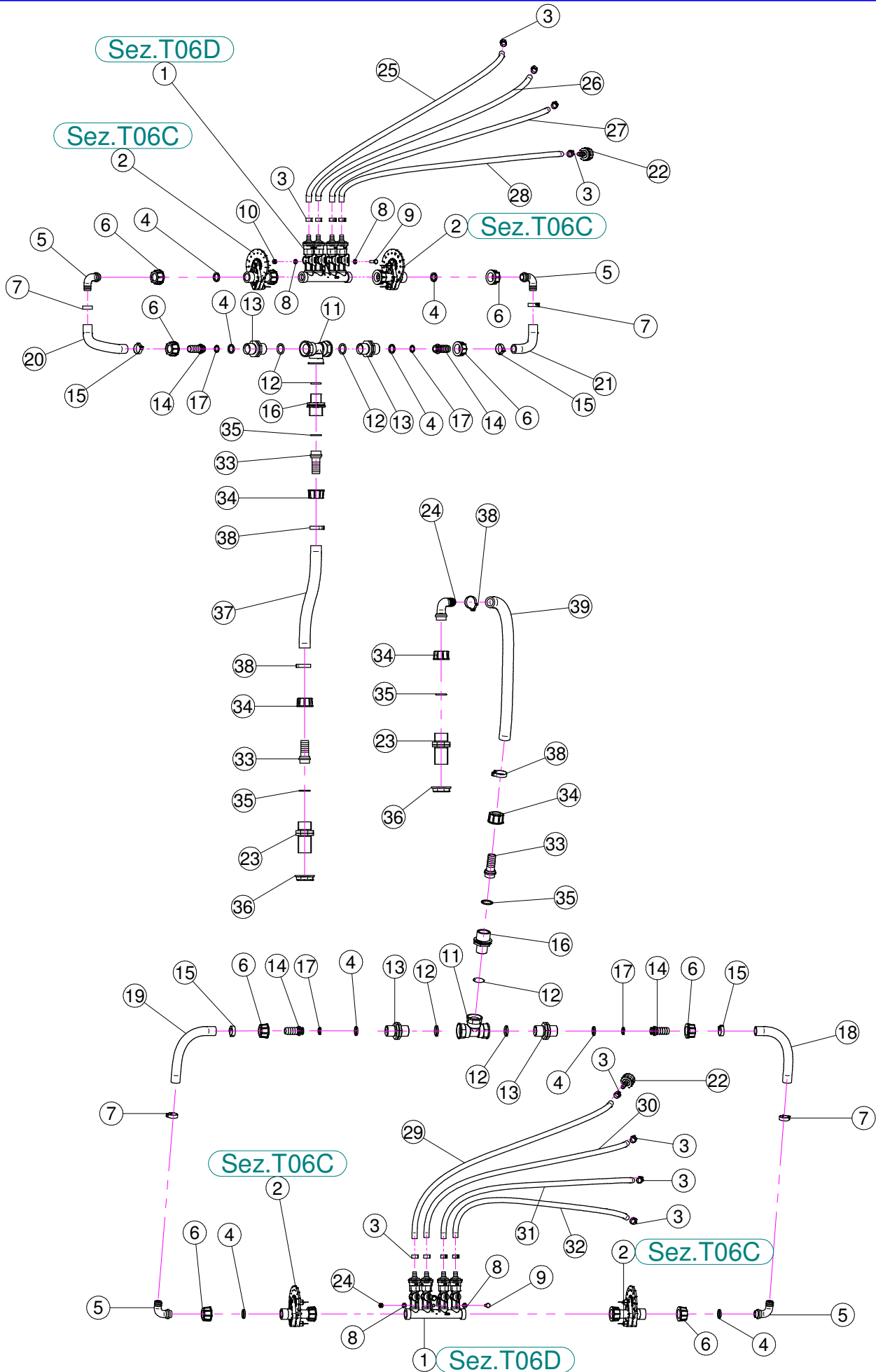


Sez. T28 (π)
Prolunghe
Extension

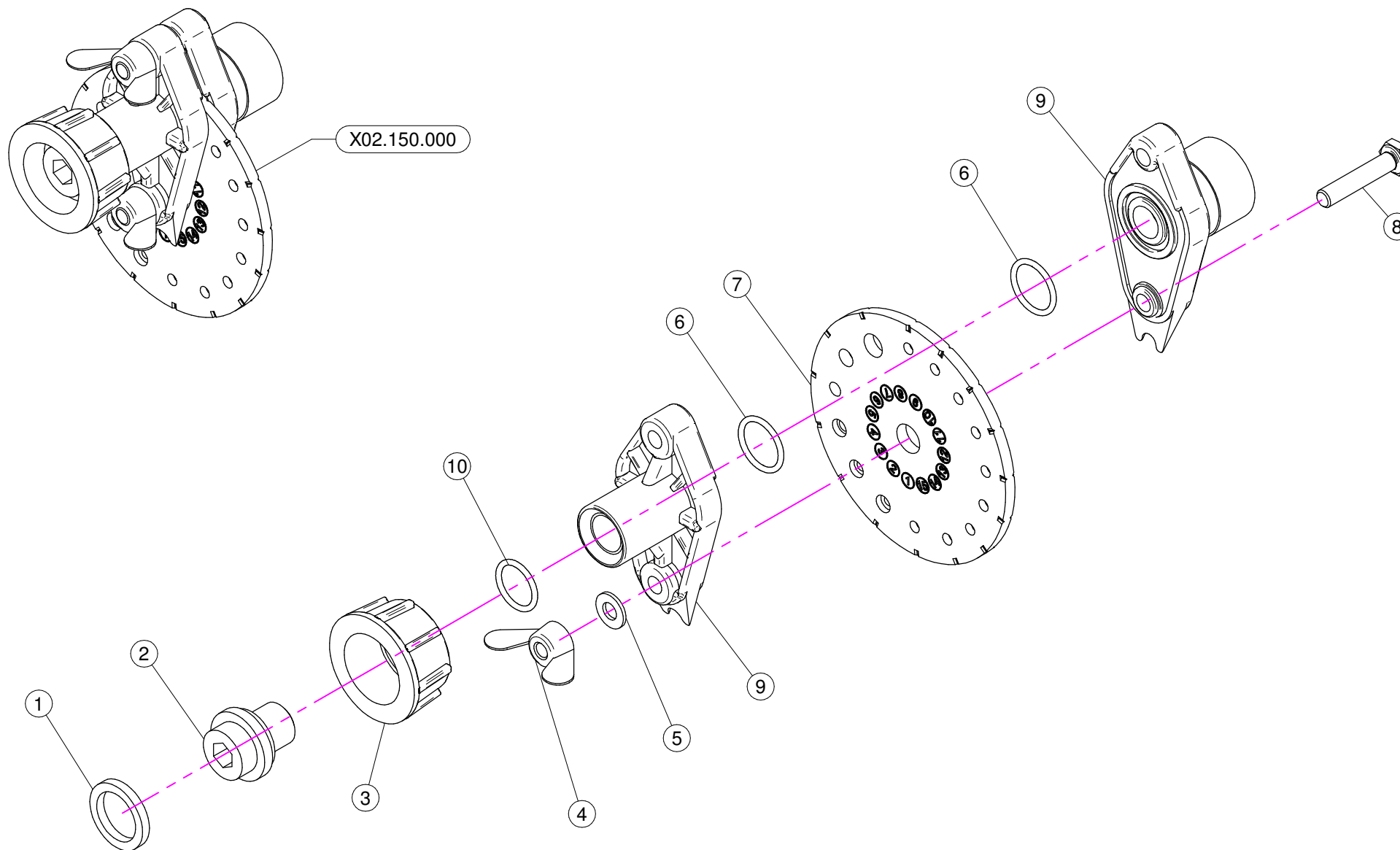
Sez. T03
Condotto dell'aria
Air duct



N°	Doc. Number	Titolo	Title	Q.tà
1	X05.843.500	CORPO D.250 CON 1 USCITA D.175	BODY D.250 WITH 1 OUTLETS D.175	1
2	X20.252.200	RIDUZIONE DA Ø250 A Ø175 L=400	REDUCTION FROM Ø250 TO Ø175 L=400	1
3	X20.650.300	CURVA D.175 60° CON PORTAGOMMA D.180	ELBOW D.175 60° WITH RUBBER HOLDER D.180	1
4	X02.146.010	MANICOTTO FLESSIBILE D.180	FLEXIBLE SLEEVE	2
5	X02.804.000	FASCETTA SNODATA PER GETTO OLIVO	OLIVE HEAD CLAMP	2
6	X00.533.000	CORPO GETTO OLIVO	OLIVE BODY	2
7	X10.027.120	DIFFUSORE 27/120 CON TUBETTO	NOZZLE 27/120	2
8	X10.22.080	DIFFUSORE 22/80	NOZZLE 22/80	4
9	X10.017.080	DIFFUSORE 17/80 CON TUBETTO	NOZZLE 17/80	2
10	X05.813.000	COLLARE D.275	CLAMP D.275	1
11	X05.616.000	COLLARE PER TUBI D.175	PIPE CLAMP D.175	2
12	X02.188.000	PROLUNGA D.175 X 600	EXTENSION D.175 X 600	1
13	X20.503.500	FASCETTA D.175 FISSAGGIO TESTATE	D.175 CLAMP HEADS FIXING	1
14	XTE.010.035T	VITE TE 10 x 35	SCREW TE 10 x 35	3
15	XRP.010.030	RONDELLA PIANA D.10 x 30 mm	WASHER D.10 x 30 mm	6
16	XD0.10.5587G	DADO M10	NUT M10	3
17	X21.036.000	FASCETTA PASSATUBI	BRACKET	2
18	XDA.008.0AG	DADO AUTOBLOCCANTE M8	SELF LOCKING NUT M8	2
19	XRV.4.8.030	Rivetto D.4,8 x 30	Rivet D.4,8 x 30	8
20	XRP.005.015I	RONDELLA PIANA D. 5x15	WASHER D. 5x15	8
21	XTA.0,39.016I	VITE AUTOFILETTANTE D. 39x16 INOX	SELF-THREATED D. 39x16	18
22	X21.188.000	TAPPO PER BOCCHETTA D.80	CAP	2
23	XRP.008.024	RONDELLA PIANA LARGA D.8X24	WASHER D.8X24	2
24	XTE.006.020T	VITE TE M6 x 20	SCREW TE M6 x 20	2
25	XRP.006.000	RONDELLA PIANA D. 6	WASHER D.6	2
26	XD0.06.5588G	DADO M6	NUT M6	2

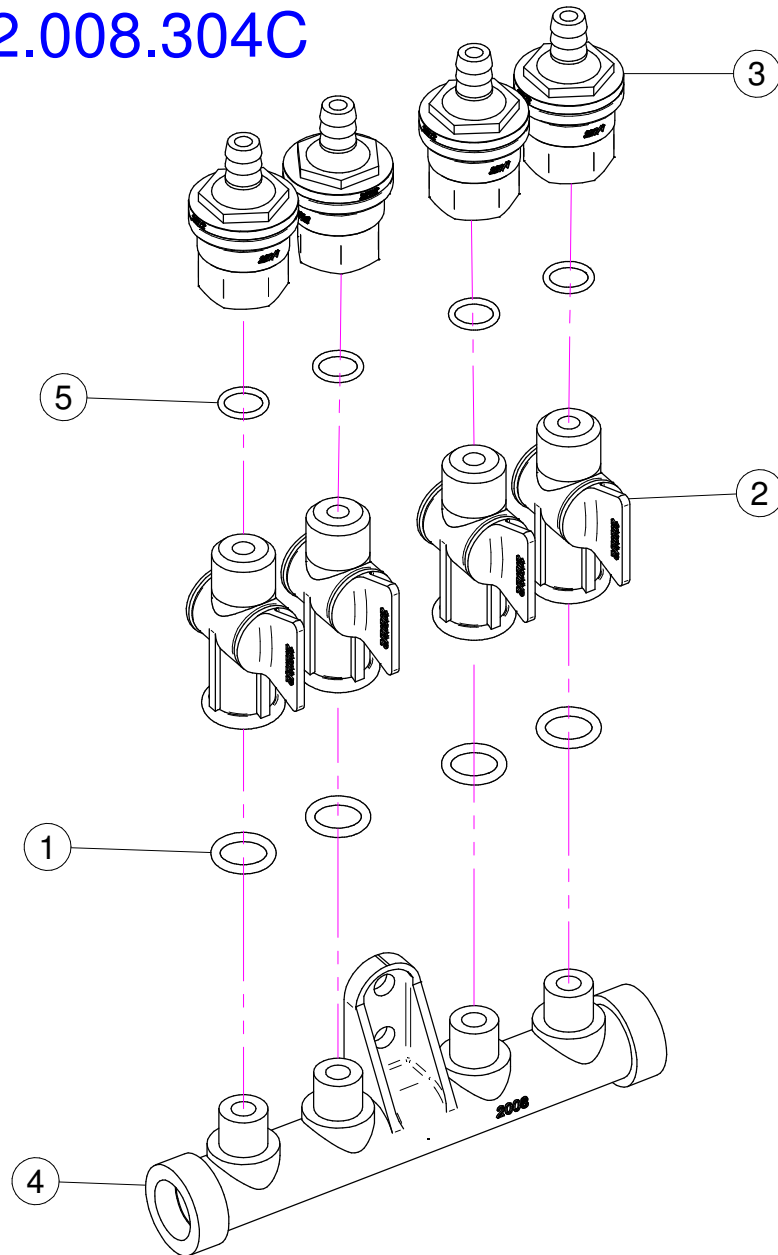


N°	Doc. Number	Titolo	Title	Q.tà
1	X02.008.304C	DISTRIBUTORE LIQUIDI A 4 RUBINETTI	4 TAPS LIQUID MANIFOLD	2
2	X02.150.000	REGOLATORE A DISCO ROTANTE COMPLETO	ROTATION DISK REGULATION	4
3	XFC.013,5.015	FASCETTA COBRA SLO30710	KOBRA CLAMP	16
4	X02.349.000	GUARNIZIONE PIANA D.17X23X3	17X23X3 FLAT GASKET	8
5	X00.055.046	RACCORDO CURVO P.G. D.17	CURVED UNION WITH R.H. D.17	4
6	X00.055.045	GIRELLO 3/4" GAS	3/4" FLY NUT	8
7	XFC.024,5.026	FASCETTA COBRA 24,5 - 26	KOBRA CLAMP 24,5 - 26	4
8	XRP.006.000	RONDELLA PIANA D. 6	WASHER D.6	8
9	XTE.006.020T	VITE TE M6 x 20	SCREW TE M6 x 20	4
10	XD0.06.5588G	DADO M6	NUT M6	4
11	X02.396.000	RACCORDO A T 3/4" - 3/4" - 3/4" F.	UNION 3/4" - 3/4" - 3/4" F.	2
12	XOR.004.081	OR D.20,22 x 3,53	20,22 x 3,53 O-RING GASKET	6
13	X02.380.000	NIPPLO 3/4"	NIPPLE 3/4"	4
14	X02.002.000	RACCORDO DIRITTO 3/4" P.G.18	STRAIGHT UNION 3/4" R.H.18	4
15	XFC.022,5.024	FASCETTA COBRA 22,5 - 24	KOBRA CLAMP 22,5 - 24	4
16	X02.293.000	RIDUZIONE 1" M - 3/4" M	1" M - 3/4" M REDUCER NIPPLE	2
17	XOR.000.117	OR D. 13,1x18,34x2,62	13,1x18,34x2,62 O-RING GASKET	4
18	X02.211.020	TUBO D.16x23 L=200	HOSE D.16x23 L=200	1
19	X02.211.020	TUBO D.16x23 L=200	HOSE D.16x23 L=200	1
20	X02.211.020	TUBO D.16x23 L=200	HOSE D.16x23 L=200	1
21	X02.211.020	TUBO D.16x23 L=200	HOSE D.16x23 L=200	1
22	X21.010.000	RACCORDO P.G. DIRITTO D.10 COMPLETO	COMPLETE R.H. D.10 UNION	2
23	X00.055.034.L	NIPPLO 1" / 1" GAS FILETTO LUNGO	LONG NIPPLE 1" / 1" GAS	2
24	X00.055.038	RACCORDO CURVO A P.G. D.19	CURVED UNION WITH R.H. D.19	1
25	X02.217.100	TUBO D.8x13 L=1000	HOSE D.8x13 L=1000	1
26	X02.217.090	TUBO D.8x13 L=900	HOSE D.8x13 L=900	1
27	X02.217.080	TUBO D.8x13 L=800	HOSE D.8x13 L=800	1
28	X02.217.070	TUBO D.8x13 L=700	HOSE D.8x13 L=700	1
29	X02.217.078	TUBO D.8x13 L=780	HOSE D.8x13 L=780	1
30	X02.217.074	TUBO D.8x13 L=740	HOSE D.8x13 L=740	1
31	X02.217.068	TUBO D.8x13 L=680	HOSE D.8x13 L=680	1
32	X02.217.066	TUBO D.8x13 L=660	HOSE D.8x13 L=660	1
33	X00.055.022	RACCORDO DIRITTO P.G. D.19	STRAIGHT HOSE R.H. D.19	3
34	X00.055.24.2	GIRELLO 1" GAS	1" FLY NUT	4
35	XOR.000.132	OR D.23,81 x 2,62	23,81 x 2,62 O-RING GASKET	4
36	X00.542.000	GHIERA 1"	NUT 1"	2
37	X02.212.028	TUBO D.19x28 L=280	HOSE D.19x28 L=280	1
38	XFC.027,5.029	FASCETTA COBRA 27,08 - W8	KOBRA CLAMP 27,08 - W8	4
39	X02.212.050	TUBO D.19x28 L=500	HOSE D.19x28 L=500	1



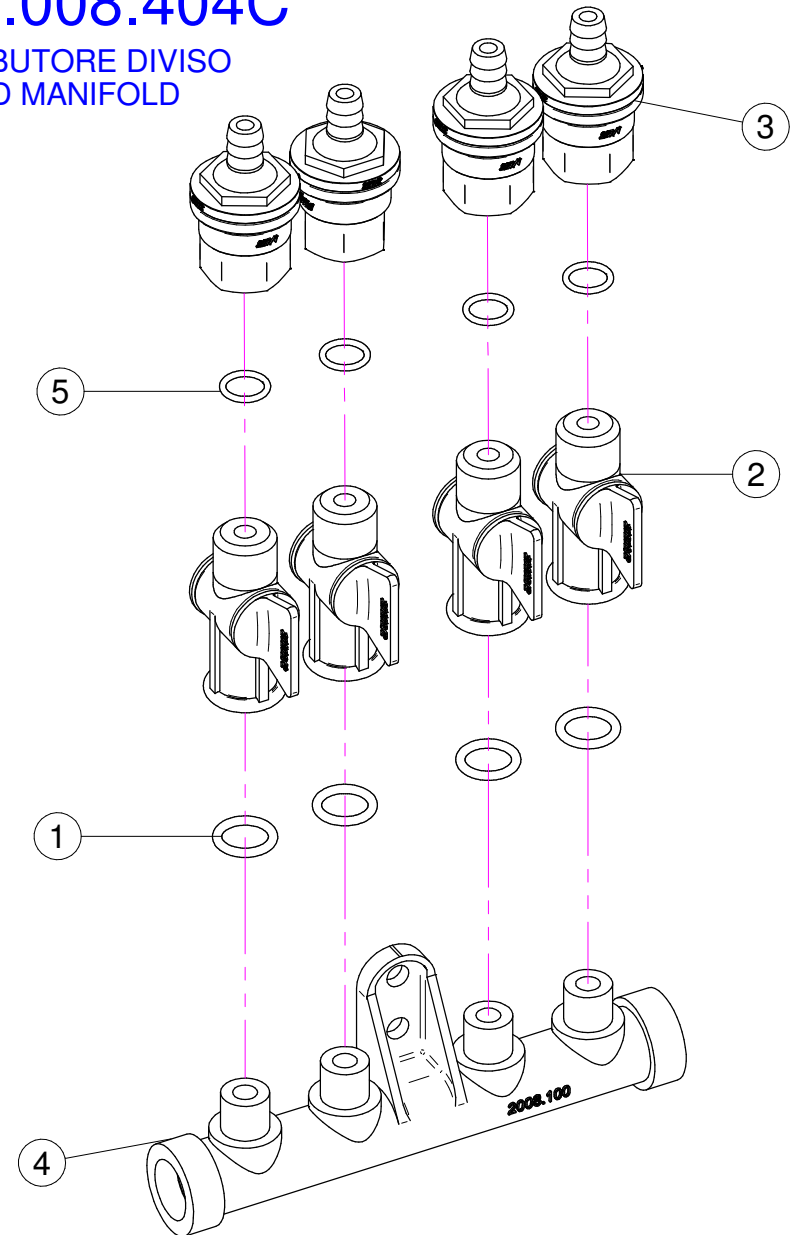
N°	Doc. Number	Titolo	Title	Q.tà	Note
1	X02.349.000	GUARNIZIONE PIANA D.17X23X3	17X23X3 FLAT GASKET	1	
2	X02.117.000	NIPPLO M14X1.5/D.17	ADAPTOR NIPPLE	1	
3	X00.055.045	GIRELLO 3/4" GAS	3/4" FLY NUT	1	
4	XDF.OTT.006	DADO AD ALETTE IN OTTONE M6	WING NUT M6	2	
5	XRP.006.000I	RONDELLA PIANA D. 6 INOX	INOX WASHER D.6	2	
6	XOR.002.062	OR D.15.6X1.78	D.15.6X1.78 OR	2	
7	X02.148.000	DISCO ROTANTE PER REGOLATORE	REGULATOR DISK	1	
8	XTE.006.030I	VITE TE M6X30 INOX	INOX M6X30 BOLT	2	
9	X02.147.500	COPPIA DI SEMICORPO REGOLATORE	REGULATOR HALF-BODY	1	
10	XOR.002.050	OR 12,43 x 1,78 NBR70	12,43 x 1,78 NBR70 O-RING GASKET	1	

X02.008.304C



X02.008.404C

DISTRIBUTORE DIVISO
DIVIDED MANIFOLD

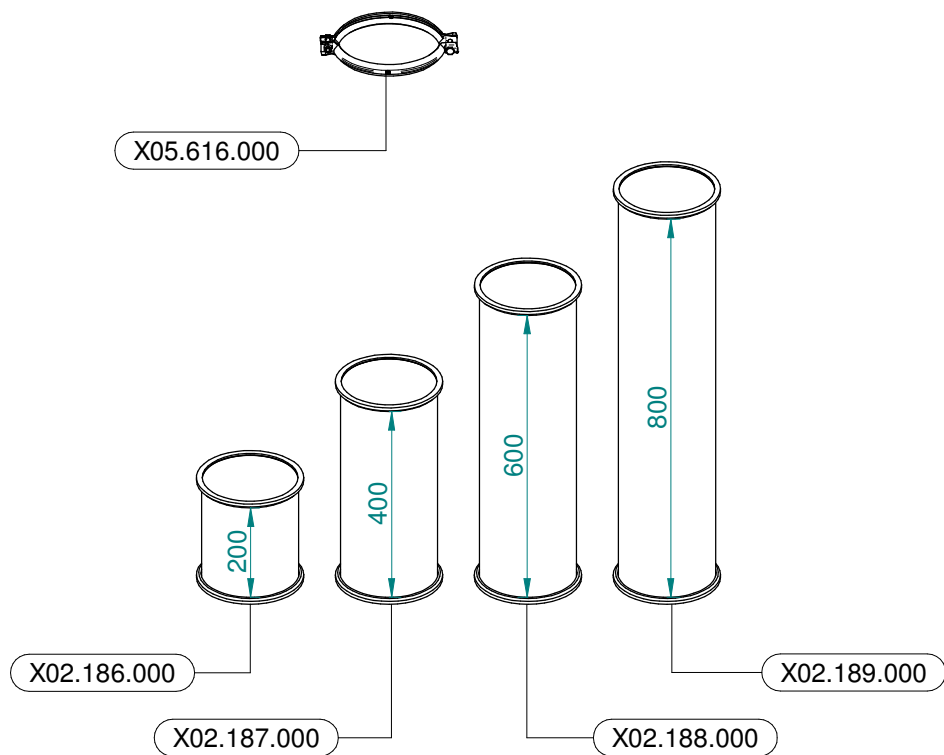


X02.008.304C

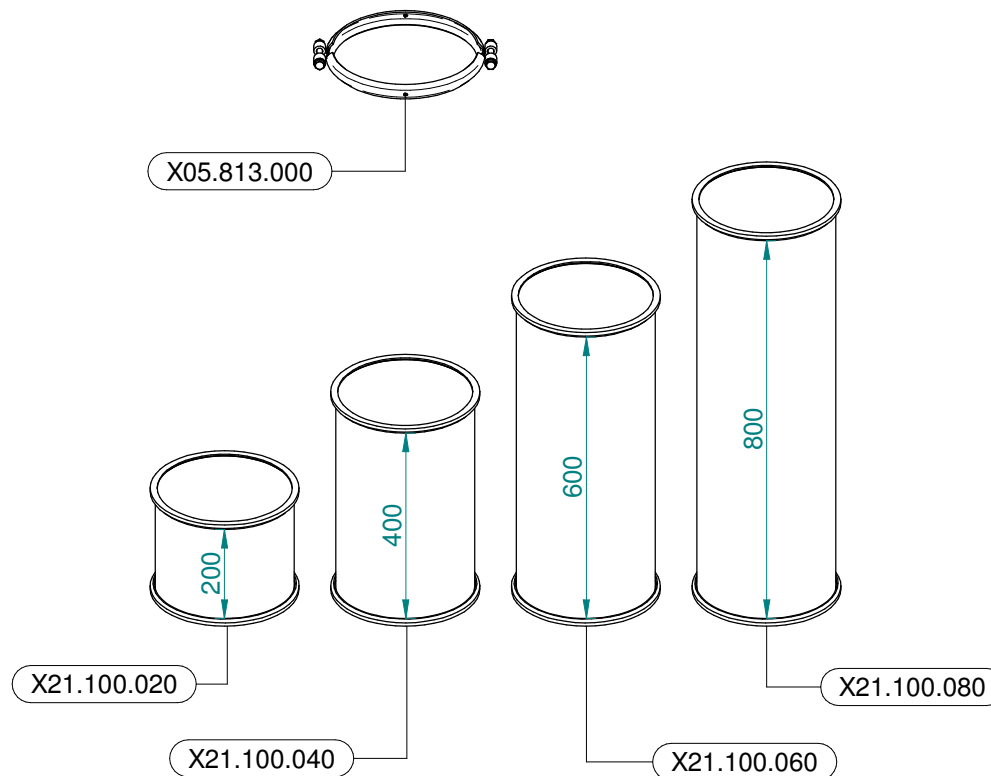
N°	Doc. Number	Titolo	Title	Q.tà	Note
1	XOR.000.117	OR D. 13,1x18,34x2,62	13,1x18,34x2;62 O-RING GASKET	4	
2	X20.202.100	RUBINETTO P.G. D.10 F.1/4" GAS TAGLIATO	TAP ASSEMBLY	4	
3	X00.227.01C	DISPOSITIVO ANTIGOCCIA	ANTDRIP VALVE	4	
4	X02.008.000	DISTRIBUTORE LIQUIDO TESTATE	SPRAYHEADS LIQUID MANIFOLD	1	
5	XOR.002.043	OR 10.82X14.38X1.78 NBR70	10.82X14.38X1.78 NBR70 O-RING GASKET	4	

X02.008.404C

N°	Doc. Number	Titolo	Title	Q.tà	Note
1	XOR.000.117	OR D. 13,1x18,34x2,62	13,1x18,34x2;62 O-RING GASKET	4	
2	X20.202.100	RUBINETTO P.G. D.10 F.1/4" GAS TAGLIATO	TAP ASSEMBLY	4	
3	X00.227.01C	DISPOSITIVO ANTIGOCCIA	ANTDRIP VALVE	4	
4	X02.008.100	DISTRIBUTORE LIQUIDO TESTATE DIVISO	DIVIDED SPRAYHEADS LIQUID MANIFOLD	1	
5	XOR.002.043	OR 10.82X14.38X1.78 NBR70	10.82X14.38X1.78 NBR70 O-RING GASKET	4	



Ø 175
 Plus 42 - 45 - 50
 Blitz 45 - 50
 Link 50



Ø 250
 Plus 55
 Blitz 55
 Link 55