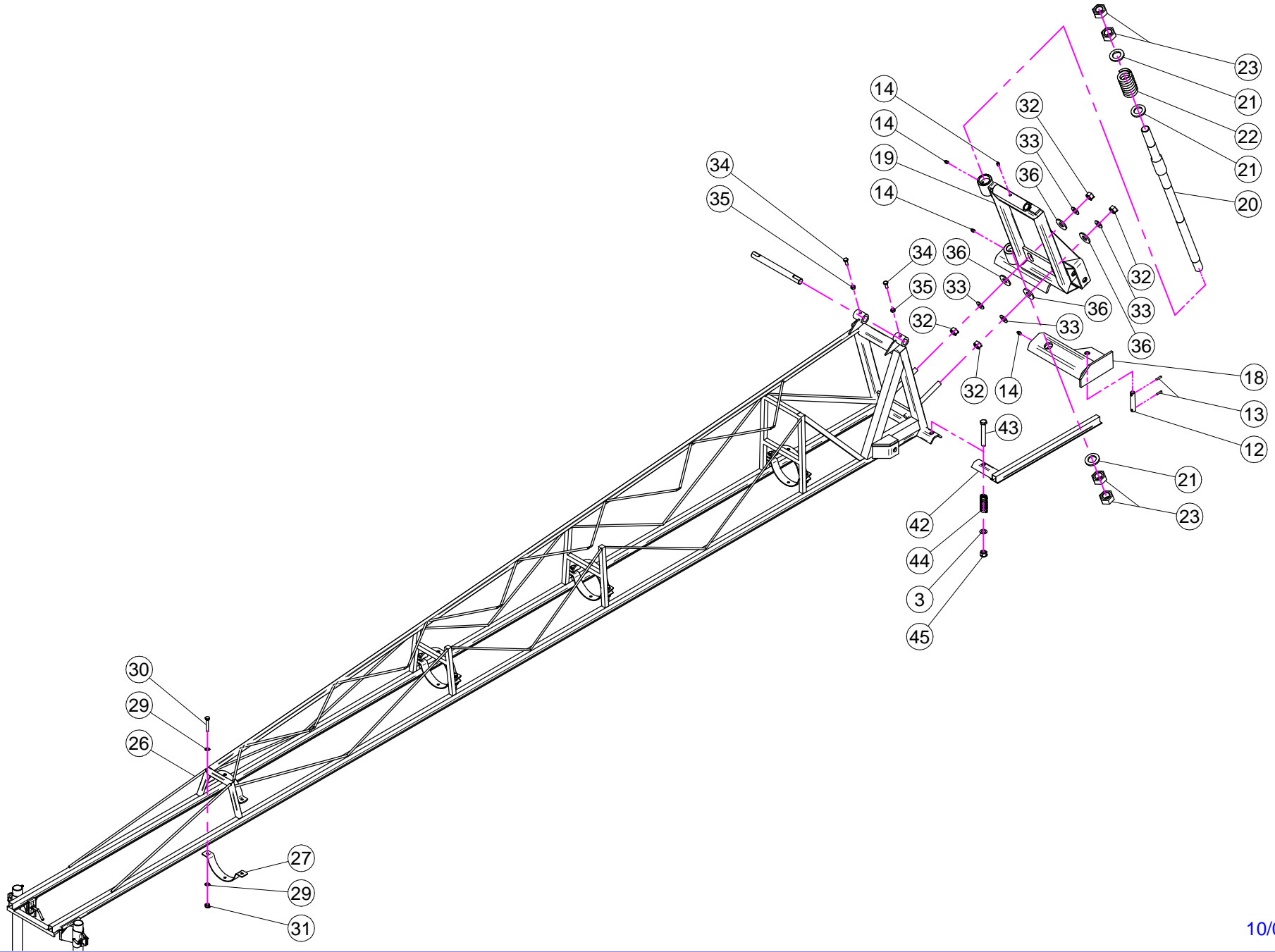
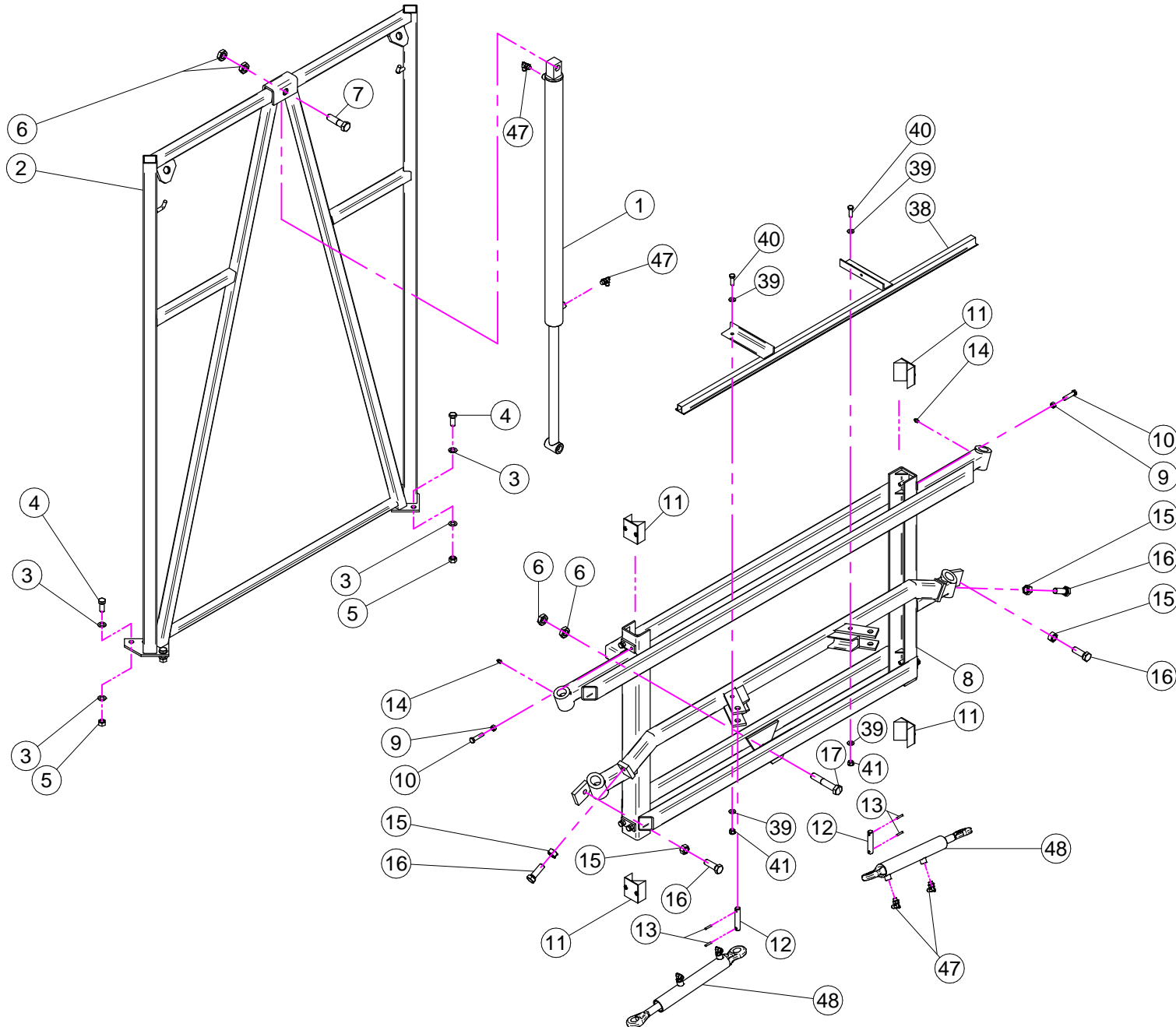
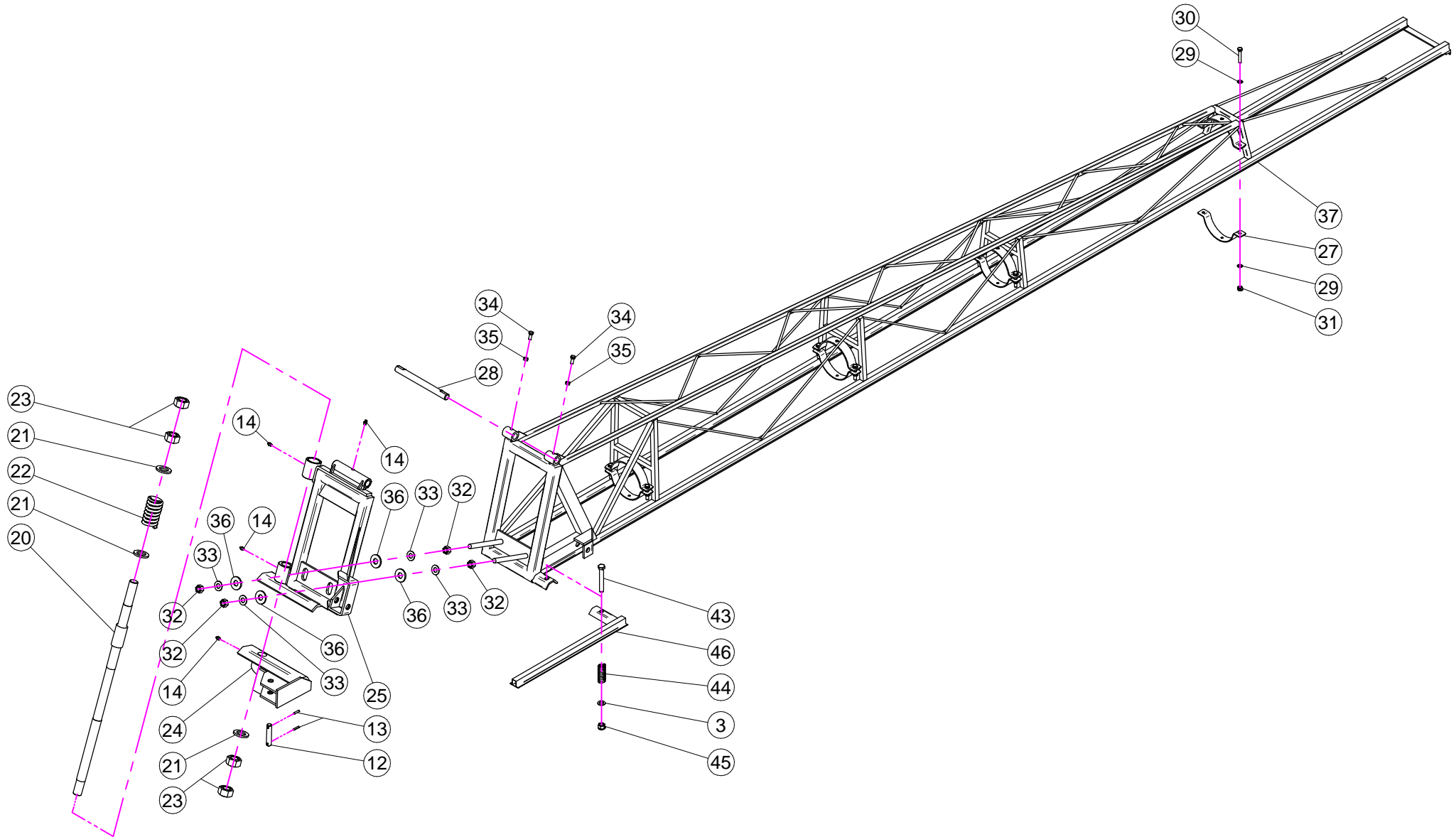


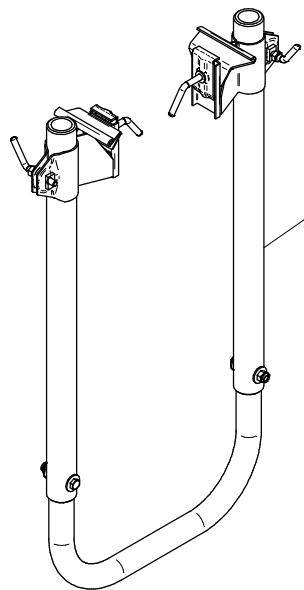
| N° | Doc. Number | Titolo | Title | Q.tà | Note |
|----|---------------|---|---|------|------|
| 1 | X20.324.000 | STAFFA BRACCIO A RIPOSO | BRACKET FOR SIDE SECTION AT REST | 2 | |
| 2 | XRP.020.000 | RONDELLA PIANA D.20 | WASHER D.20 | 8 | |
| 3 | X20.295.001 | TIRANTE Ø 1" FISSAGGIO TELAIO | ROD FIXING LOWER AND TOP FRAME | 2 | |
| 4 | XD0.20.5587G | DADO M20 | NUT M20 | 8 | |
| 5 | X21.065.001 | TELAIO INFERIORE | FRAME | 1 | |
| 6 | XTE.012.035T | VITE TE M12X35 | SCREW TE M12X35 | 6 | |
| 7 | X20.312.001 | SPINOTTO ATTACCO 3° PUNTO | PIN | 1 | |
| 8 | X02.439.000 | SPINOTTO A SCATTO D.10 | PIN D.10 | 4 | |
| 9 | X20.311.000 | SPINOTTO DUE PUNTI BARRA | PIN | 2 | |
| 10 | X20.314.001 | SPINOTTO ATTACCO 3° PUNTO | PIN FOR 3°-POINT | 1 | |
| 11 | X20.298.003 | TIRANTE 3° PUNTO | TIE-ROD | 2 | |
| 12 | XCP.006.040I | COPIGLIA D.6 Lg.40 | PIN D.6 Lg.40 | 1 | |
| 13 | X00.100.004 | COPIGLIA D.4 | SPLIT PIN D.4 | 1 | |
| 14 | X20.778.100 | BOCCOLA PER TERZO PUNTO PER PLUS + BARRA | BUSH | 1 | |
| 15 | X40.202.001 | BOCCOLA PER SPINOTTI SOLLEVATORE | BUSH | 2 | |
| 16 | X40.201.200 | SPINOTTO SOLLEVATORE | PIN POWER-LIFT | 2 | |
| 17 | XRD.022.000 | RONDELLA DENTELLATA D.22 | TAB WASHER D.22 | 2 | |
| 18 | XDI.022.5593F | DADO AD INTAGLI 6 M 22 | CASTLE NUT (6 SLOTS) M 22 | 2 | |
| 19 | XCP.004.040 | COPIGLIA D.4 L=40 | SPLIT PIN D.4 L=40 | 2 | |
| 20 | X20.338.000DX | STAFFA SCORRIMENTO PER BRACCIO IN RIPOSO | BRACKET | 1 | |
| 21 | X20.338.000SX | STAFFA SCORRIMENTO PER BRACCIO IN RIPOSO | BRACKET | 1 | |
| 22 | X20.323.000SX | SUPPORTO SINISTRO PER BRACCIO A RIPOSO | LH SUPPORTING FOR SIDE SECTION AT REST | 1 | |
| 23 | X20.496.000 | SQUADRETTA PER TIRANTE DI ANCORAGGIO | SHAPED PLATE WITH HOLES | 2 | |
| 24 | X20.323.000DX | SUPPORTO DESTRO PER BRACCIO A RIPOSO | RH SUPPORTING FOR SIDE SECTION AT REST | 1 | |
| 25 | XRP.014.000 | RONDELLA PIANA D.14 | WASHER D.14 | 4 | |
| 26 | XD0.14.5587G | DADO M14 | NUT M14 | 6 | |
| 27 | X20.495.000 | TIRANTE DI ANCORAGGIO | ROD | 2 | |
| 28 | XBRF.014.025 | BARRA FILETTATA M14 L=250 | BAR M14 L=250 | 2 | |
| 29 | X20.656.000 | STAFFA POSTERIORE FISSAGGIO PORTATO AL TELAIO | BRACKET FIXING MOUNTED TO THE LOWER FRAME | 2 | |
| 30 | XRP.016.000 | RONDELLA PIANA D.16 | WASHER D.16 | 8 | |
| 31 | XD0.16.5587G | DADO M16 | NUT M16 | 4 | |
| 32 | XTE.016.110 | VITE TE M16x110 ZINC. | SCREW TE M16x110 | 4 | |



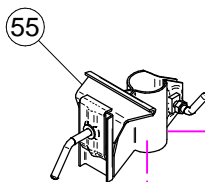




| N° | Doc. Number | Titolo | Title | Q.tà | Note | N° | Doc. Number | Titolo | Title | Q.tà | Note |
|----|---------------|---------------------------------------|--------------------------|------|------|----|---------------|---------------------------------------|--------------------------------|------|------|
| 1 | X20.199.01C | MARTINETTO CENTRALE B.PN. 10-12 | SIDE JACK CENTRAL | 1 | | 25 | X20.320.100DX | SEZIONE LATERALE DESTRA | RH SUPPORTING | 1 | |
| 2 | X20.293.001 | TELAIO SUPERIORE | TOP FRAME | 1 | | 26 | X20.316.100SX | BRACCIO SINISTRO PER BARRA PNEUMATICA | PNEUMATIC BAR LEFT ARM | 1 | |
| 3 | XRP.016.000 | RONDELLA PIANA D.16 | WASHER D.16 | 14 | | 27 | X20.322.000 | SEMIFASCETTA D.160 INOX | INOX D.160 SEMICLAMP | 8 | |
| 4 | XTE.016.040T | VITE TE 16x40 | SCREW TE 16x40 | 6 | | 28 | X20.319.000 | PERNO SOLLEVAMENTO BRACCIO | PIN FOR HOISTING | 2 | |
| 5 | XD0.16.5587G | DADO M16 | NUT M16 | 6 | | 29 | XRP.010.000 | RONDELLA PIANA D.10 | WASHER D.10 | 32 | |
| 6 | XD0.22.5589G | DADO M22 6S PG ZINC. | NUT M22 6S | 4 | | 30 | XTE.010.060T | VITE TE M10 x 60 | SCREW TE M10 x 60 | 16 | |
| 7 | XTE.022.080 | VITE TE M22X80 | SCREW TE M22X80 | 1 | | 31 | XDA.010.0BG | DADO AUTOBLOCCANTE M10 | SELF LOCKING NUT M10 | 16 | |
| 8 | X20.294.000 | TELAIO SCORREVOLE | SLIDING FRAME | 1 | | 32 | XD0.18.5587G | DADO M 18 | NUT M 18 | 8 | |
| 9 | XD0.12.5588G | DADO M12 PG 5588 | M12 6S BIG LEAD NUT 5588 | 8 | | 33 | XRP.018.000 | RONDELLA PIANA D.18 | WASHER | 8 | |
| 10 | XTE.012.050T | VITE TE M12x50T | SCREW M12X50T | 8 | | 34 | XTE.010.025T | VITE TE 10x25T | SCREW TE 10x25T | 4 | |
| 11 | X20.326.000 | GUIDA PER TELAIO SCORREVOLE | GUIDE | 4 | | 35 | XD0.10.5588G | DADO M 10 6S PG | M10 6S BIG LEAD NUT 5588 | 4 | |
| 12 | X20.329.000 | SPINOTTO D.19 PER MARTINETTI | PIN D. 19 FOR CYLINDERS | 4 | | 36 | X20.820.000 | RONDELLA BLOCCAGGIO VENTOLA | WASHER | 8 | |
| 13 | XSE.006.028 | SPINA ELASTICA D.6 x 28 | ELASTIC PIN | 8 | | 37 | X20.316.100DX | BRACCIO DESTRO PER BARRA PNEUMATICA | PNEUMATIC BAR RIGHT ARM | 1 | |
| 14 | XID.010.001 | INGRASSATORE DIRITTO M10X1 | GREASE NIPPLE | 12 | | 38 | X20.317.000 | STAFFA PORTA DIFFUSORI CENTRALE | CENTRAL CARRIER OUTLET BRACKET | 1 | |
| 15 | XD0.20.5587G | DADO M20 | NUT M20 | 4 | | 39 | XRP.012.000 | RONDELLA PIANA D. 12 | WASHER D. 12 | 4 | |
| 16 | XTE.020.060T | VITE M20x60 | SCREW TE M20x60 | 4 | | 40 | XTE.012.035T | VITE TE M12X35 | SCREW TE M12X35 | 2 | |
| 17 | XTE.022.120 | VITE TE M22x120 | SCREW TE M22x120 | 1 | | 41 | XDA.012.0AG | DADO AUTOBLOCCANTE M12 | SELF LOCKING NUT M12 | 2 | |
| 18 | X20.321.000SX | SUPPORTO SINISTRO PER SNODO | SUPPORT LEFT | 1 | | 42 | X20.287.000SX | STAFFA PORTA DIFFUSORI CENTRALI (SX) | OUTLETS CARRIER LEFT BRACKET | 1 | |
| 19 | X20.320.100SX | SEZIONE LATERALE SINISTRA | RH SUPPORTING | 1 | | 43 | XTE.016.110 | VITE TE M16x110 ZINC. | SCREW TE M16x110 | 2 | |
| 20 | X20.318.000 | PERNO PER SNODO | PIN FOR ARTICULATION | 2 | | 44 | X07.544.000 | MOLLA A COMPRESSIONE | SPRING | 2 | |
| 21 | X20.921.000 | RONDELLA BRACCI LATERALI D.60X36 SP.6 | WASHER D.60X36 SP.6 | 6 | | 45 | XDA.016.0AG | DADO AUTOBLOCCANTE M16 | SELF LOCKING NUT M16 | 2 | |
| 22 | X20.264.000 | MOLLA | SPRING | 2 | | 46 | X20.287.000DX | STAFFA PORTA DIFFUSORI CENTRALI (DX) | OUTLETS CARRIER RIGHT BRACKET | 1 | |
| 23 | XD0.33.5588F | DADO M33 6S PF ZINC. | NUT M33 6S | 8 | | 47 | X02.409.000 | RACCORDO CURVO 1/4 " CON DADO | ELBOW WITH RETAINING RING SEAL | 6 | |
| 24 | X20.321.000DX | SUPPORTO DESTRO PER SNODO | SUPPORT RIGHT | 1 | | 48 | X20.147.01C | MARTINETTO CON ROTULE COMPLETO | SIDE JACK | 2 | |



X20.339.000



50

54

52

52

53

50

51

X20.171.00C

61

57

58

59

56

60

62

59

| N° | Doc. Number | Titolo | Title | Q.tà | Note |
|----|--------------|------------------------------------|--------------------------------|------|------|
| 50 | X20.341.000 | TUBO POLIETENE Ø 40 PN 16 | POLYETHYLENE HOSE Ø 40 Lg. 600 | 2 | |
| 51 | X20.342.001 | TUBO PIEGATO PER CAVALLOTTO | BUMPER | 1 | |
| 52 | XRP.008.024 | RONDELLA PIANA LARGA D.8X24 | WASHER D.8X24 | 4 | |
| 53 | XTE.008.050T | VITE TE M8X50 | SCREW TE M8X50 | 2 | |
| 54 | XDA.008.0AG | DADO AUTOBLOCCANTE M8 | SELF LOCKING NUT M8 | 2 | |
| 55 | X20.171.00C | STAFFA SCORR. PORTA DIFF. COMPLETO | SLIDING BRACKET AIR BOOM | 2 | |

X20.171.00C

| N° | Doc. Number | Titolo | Title | Q.tà | Note |
|----|--------------|---------------------------------------|--------------------|------|------|
| 56 | X20.171.000 | STAFFA SCORREVOLE PORTA DIFFUSORI | SLIDING BRACKET | 1 | |
| 57 | X20.068.000 | STAFFA FISSAGGIO SCORREVOLE PER BARRA | BRACKET | 1 | |
| 58 | XRP.008.000 | RONDELLA PIANA D.8 | WASHER D.8 | 1 | |
| 59 | X20.069.000 | LEVA FISSAGGIO STAFFA | THRGEGED HANDLE M8 | 2 | |
| 60 | X20.071.000 | DADO RETTANGOLARE CON FORO PASSANTE | SQUARE NUT M8 | 1 | |
| 61 | X20.070.000 | DADO RETTANGOLARE M8 | SQUARE NUT M8 | 1 | |
| 62 | XD0.08.5588G | DADO M8 | NUT M8 | 1 | |

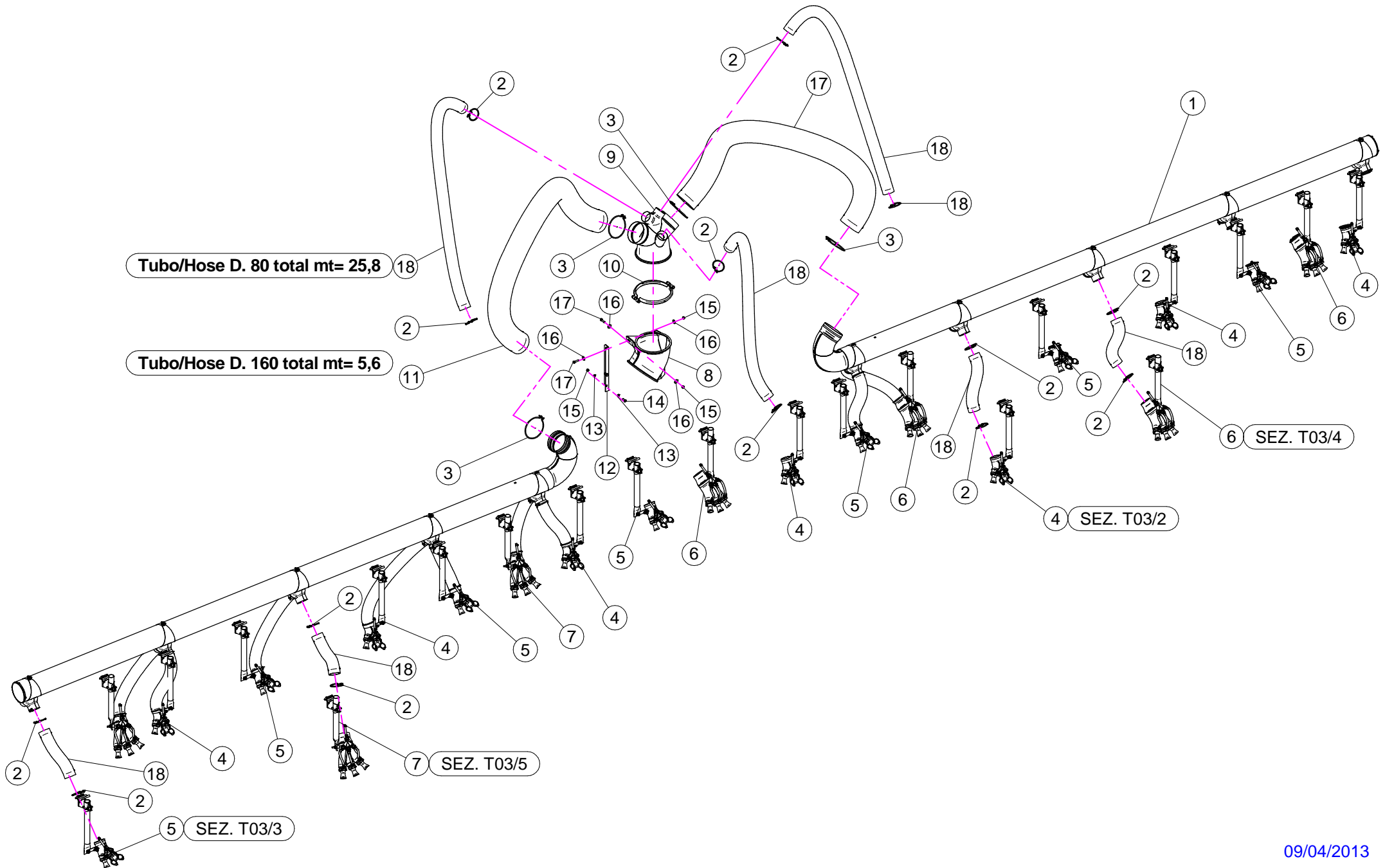
Sez. T03/1
Percorso aria
Air route

Sez. T03/3
Staffa scorrevole porta diffusori completa DX
Sliding bracket air boom DX

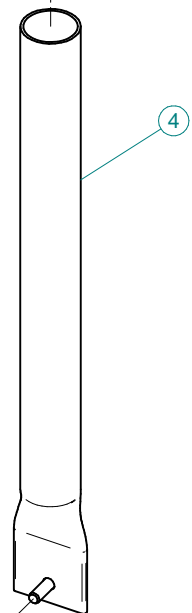
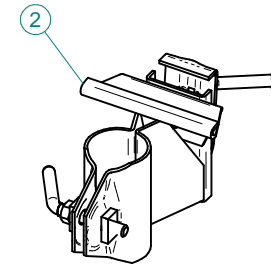
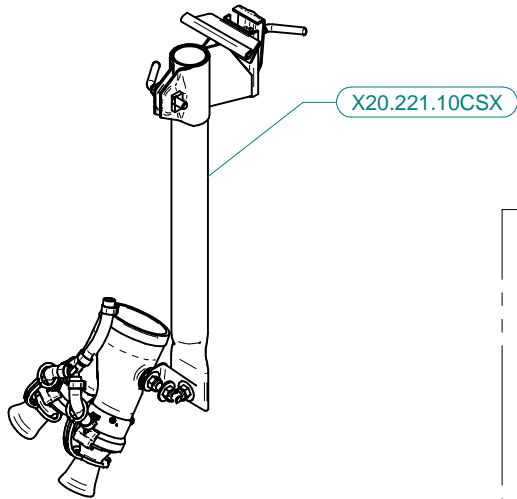
Sez. T03/5
Staffa scorrevole porta diffusori completa SX
Sliding bracket air boom SX

Sez. T03/4
Staffa scorrevole porta diffusori completa DX
Sliding bracket air boom DX

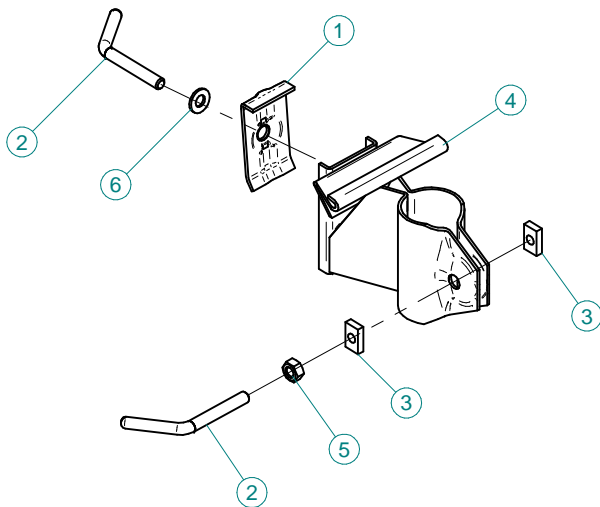
Sez. T03/2
Staffa scorrevole porta diffusori completa SX
Sliding bracket air boom SX



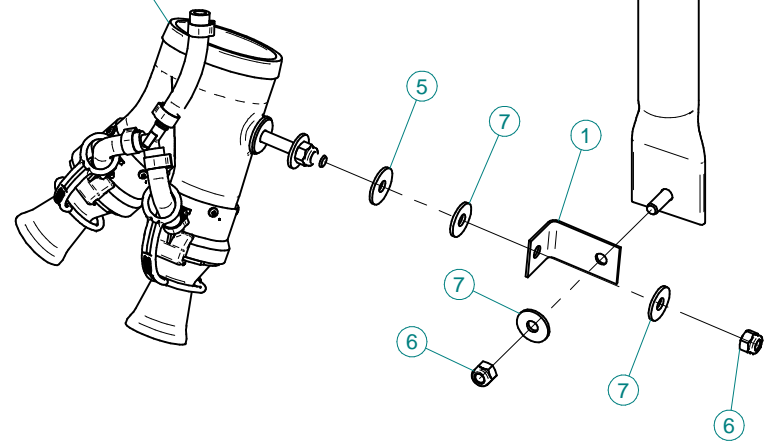
| N° | Doc. Number | Titolo | Title | Q.tà | Note |
|----|---------------|---------------------------------|---------------------------------|------|------|
| 1 | X20.307.100 | CONDODTTO ARIA | AIR DUCT | 2 | |
| 2 | XF0.080.000 | FASCETTA UNIFILO D.80 | CLAMP D.80 | 42 | |
| 3 | XF0.160.000 | FASCETTA UNIFILO D.160 | CLAMP D.160 | 4 | |
| 4 | X20.221.10CSX | KIT-2D D.80 COMPLETO DI STAFFA | 2 NOZZLES KIT D.80 WITH BRACKET | 7 | |
| 5 | X20.221.10CDX | KIT-2D D.80 COMPLETO DI STAFFA | 2 NOZZLES KIT D.80 WITH BRACKET | 7 | |
| 6 | X20.837.60CSX | KIT-3D D.80 COMPLETO DI STAFFA | 3 NOZZLES KIT D.80 WITH BRACKET | 4 | |
| 7 | X20.837.60CDX | KIT-3D D.80 COMPLETO DI STAFFA | 3 NOZZLES KIT D.80 WITH BRACKET | 3 | |
| 8 | X05.809.050 | CURVA A 45° D. 250 | 45° BEND D. 250 | 1 | |
| 9 | X20.286.100 | CORPO USCITA ARIA D. 250-160-80 | BODY AIR OUTLET D. 250-160-80 | 1 | |
| 10 | X05.813.000 | COLLARE D.275 | CLAMP D.275 | 1 | |
| 11 | X02.427.245 | TUBO SPIRALATO D. 160 L=2450 | HOSE D. 160 L=2450 | 2 | |
| 12 | X05.809.051 | STAFFA FISSAGGIO CURVA A 45° | 45° ELBOW BRACKET | 1 | |
| 13 | XRP.010.000 | RONDELLA PIANA D.10 | WASHER D.10 | 4 | |
| 14 | XTE.010.025T | VITE TE 10x25T | SCREW TE 10x25T | 2 | |
| 15 | XD0.10.5587G | DADO M10 | NUT M10 | 5 | |
| 16 | XRP.010.030 | RONDELLA PIANA D.10 x 30 mm | WASHER D.10 x 30 mm | 6 | |
| 17 | XTE.010.035T | VITE TE 10 x 35 | SCREW TE 10 x 35 | 3 | |
| 18 | X02.280.240 | TUBO SPIRALATO D. 80 | HOSE D. 80 | 21 | |



X20.171.00C



X20.221.01CSX 3

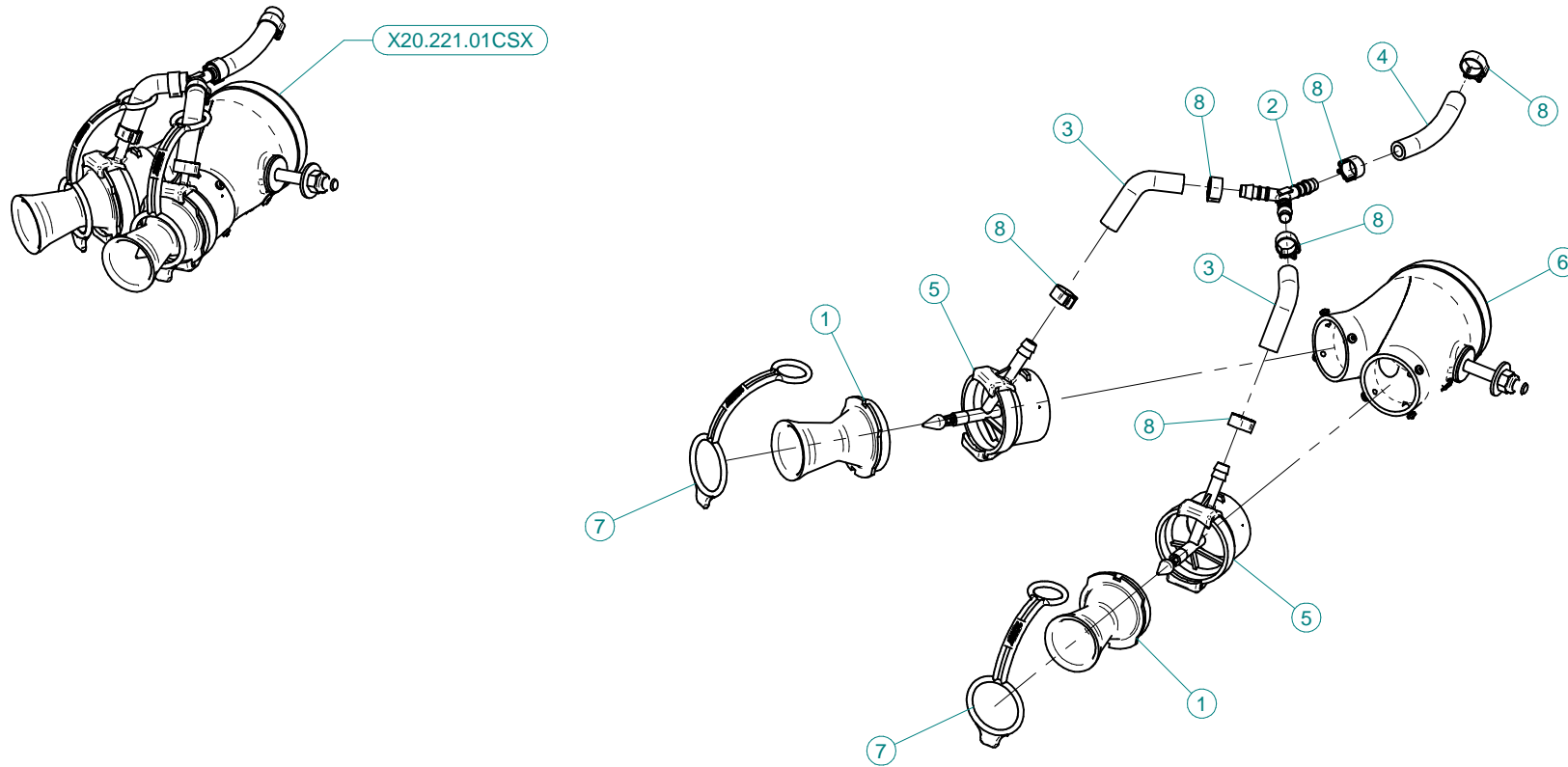


X20.221.10CSX

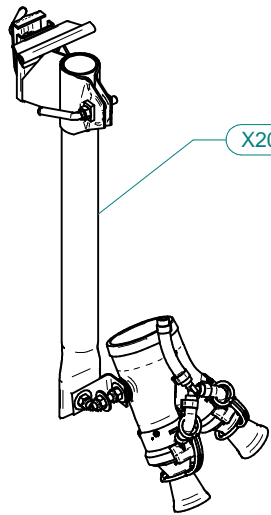
| N° | Doc. Number | Titolo | Title | Q.tà |
|----|---------------|--|------------------------------|------|
| 1 | X02.195.100.C | CAVALLOTTO PER VENTAGLIO D.80 INOX | BRACKET | 1 |
| 2 | X20.171.00C | STAFFA SCORREVOLE PER BARRA PNEUMATICA | SLIDING BRACKET FOR AIR BOOM | 1 |
| 3 | X20.221.01CSX | MANO 2 USCITE SX COMPLETA DI DIFFUSORI | 2 NOZZLES LEFT BODY KIT | 1 |
| 4 | X20.266.001 | TUBO D.40 L=460 PER BARRA PNEUMATICA | BRACKET | 1 |
| 5 | X21.112.000 | GUARNIZIONE 26X8X2 | O-RING | 1 |
| 6 | XDA.008.0AG | DADO AUTOBLOCCANTE M8 ALTO PG ZINC. | HIGH BIG LEAD M8 SELFLOCKING | 2 |
| 7 | XRP.008.024 | RONDELLA PIANA F.LARGA D.8X24 ZINC. | WASHER D.8X24 | 3 |

X20.171.00C

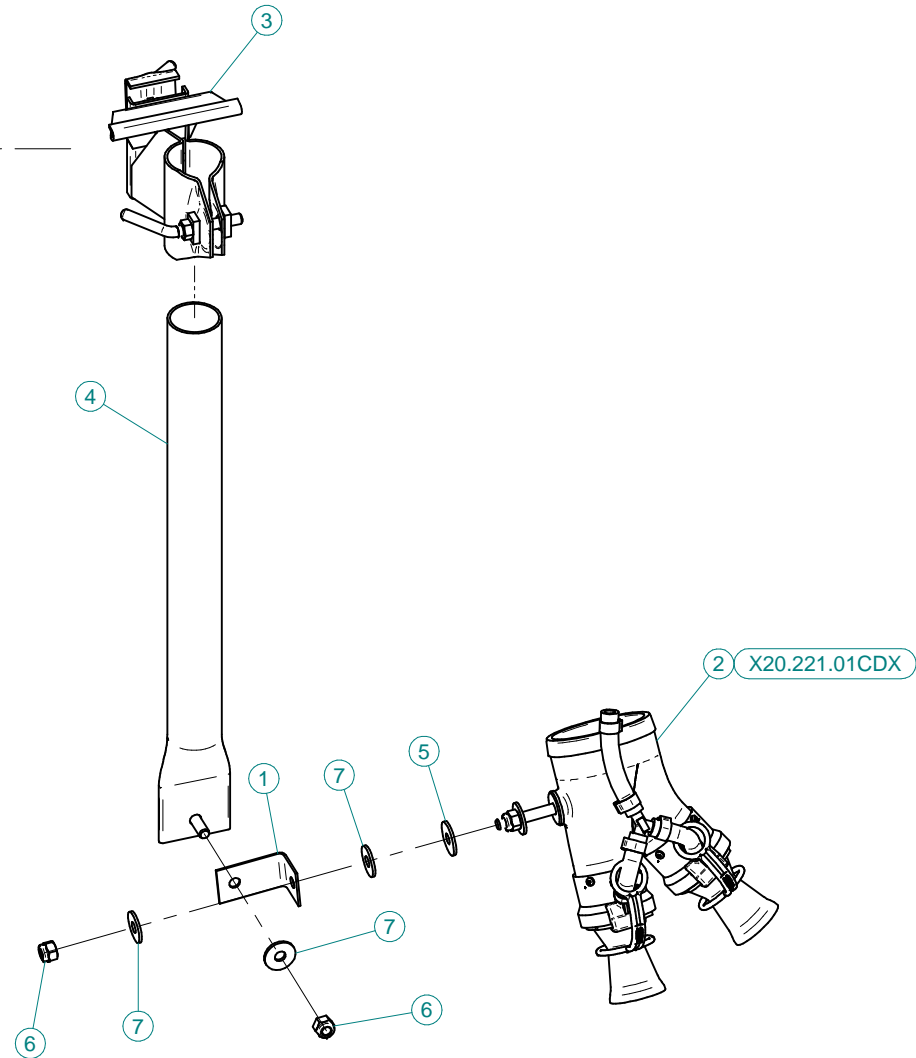
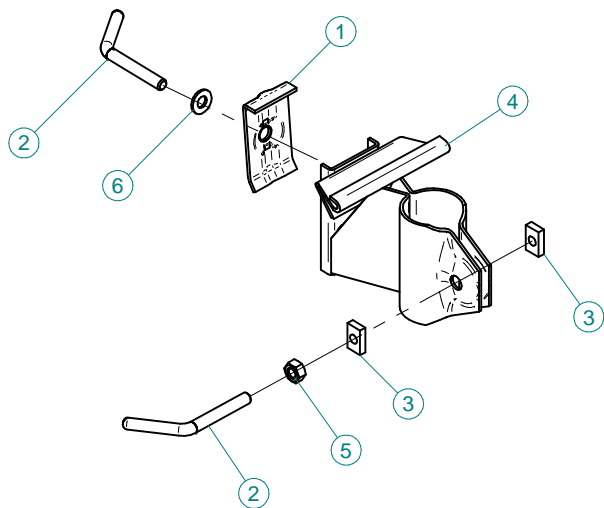
| N° | Doc. Number | Titolo | Title | Q.tà |
|----|---------------|--|-------------------------|------|
| 1 | X20.068.000.Z | STAFFA FISSAGGIO SCORREVOLE PER BARRA | GALVANIZED PLATE | 1 |
| 2 | X20.069.000 | MANIGLIA DI BLOCCAGGIO M8 | M8 FIXING LEVER | 2 |
| 3 | X20.070.000 | DADO RETTANG.FILETTATO M 8 | SQUARE NUT M8 | 2 |
| 4 | X20.171.000.Z | STAFFA SCORREVOLE PER BARRA PNEUMATICA | SLIDING BRACKET | 1 |
| 5 | XD0.08.5588G | DADO M8 6S PG 5588 ZINC. | M8 6S BIG LEAD NUT 5588 | 1 |
| 6 | XRP.008.000 | RONDELLA PIANA D.8 6592 ZINC. | 8 D. FLAT WASHER | 1 |



| N° | Doc. Number | Titolo | Title | Q.tà |
|----|---------------|---------------------------------------|----------------------|------|
| 1 | X00.003,5.50 | DIFFUSORE 3,5/50 | NOZZLE 3,5/50 | 2 |
| 2 | X02.077.010 | RACCORDO A Y D.8-8-8 | Y FITTING | 1 |
| 3 | X02.217.005 | TUBO Ø8x13 L=50 | HOSE Ø8x13 L=50 | 2 |
| 4 | X02.217.009 | TUBO Ø8x13 L=90 | HOSE Ø8x13 L=90 | 1 |
| 5 | X20.016.01C | RACCORDO ATTACCO RAPIDO PORTA TUBETTO | PIPE WITH OLIVE | 2 |
| 6 | X20.221.000SX | MANO 2 USCITE SX | LH 2 OUTLETS | 1 |
| 7 | X20.697.000 | FERMA DIFFUSORI | NOZZLE STOP | 2 |
| 8 | XFC.012,5.014 | FASCETTA COBRA SL030705 | KOBRA CLAMP SL030705 | 6 |



X20.171.00C

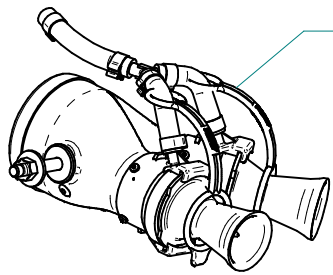


X20.221.10CDX

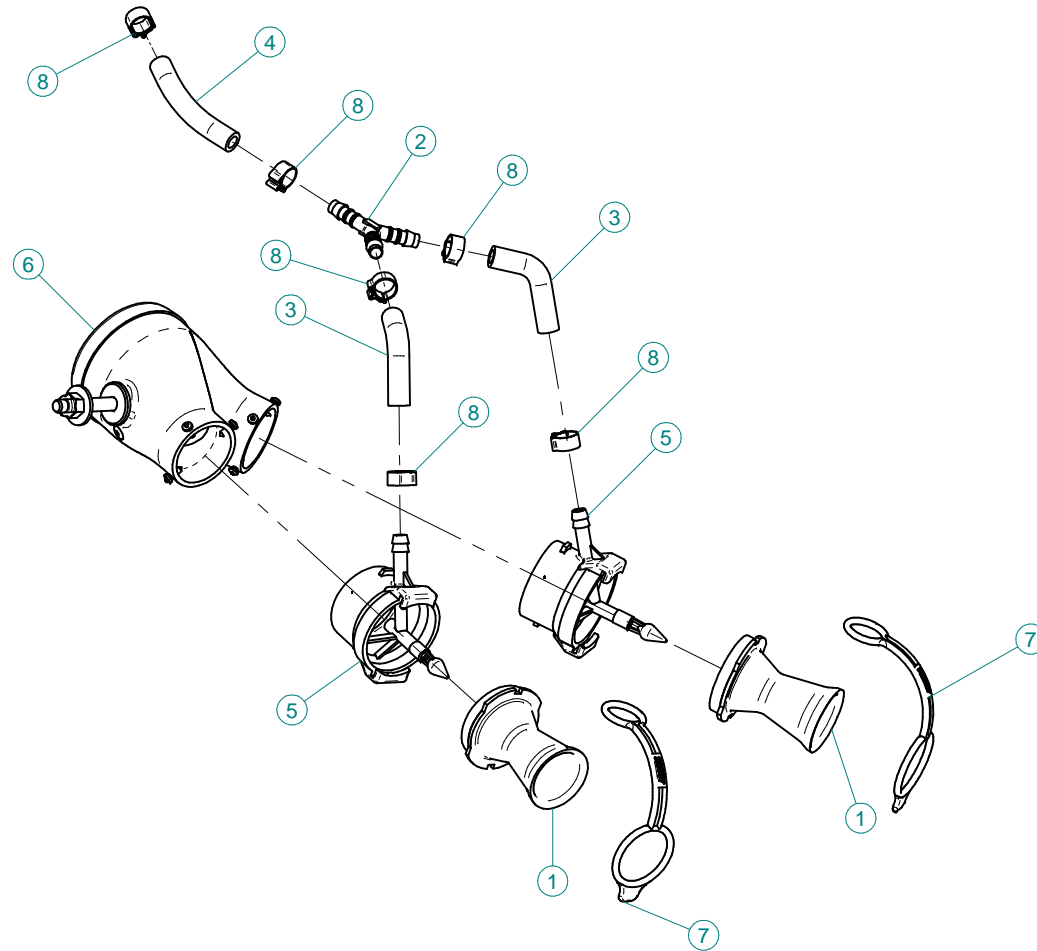
| N° | Doc. Number | Titolo | Title | Q.tà |
|----|---------------|--|------------------------------|------|
| 1 | X02.195.100.C | CAVALLOTTO PER VENTAGLIO D.80 INOX | BRACKET | 1 |
| 2 | X02.221.01CDX | MANO 2 USCITE DX COMPLETA DI DIFFUSORI | 2 NOZZLES RIGHT BODY KIT | 1 |
| 3 | X20.171.00C | STAFFA SCORREVOLE PER BARRA PNEUMATICA | SLIDING BRACKET FOR AIR BOOM | 1 |
| 4 | X20.266.001 | TUBO D.40 L=460 PER BARRA PNEUMATICA | BRACKET | 1 |
| 5 | X21.112.000 | GUARNIZIONE 26X8X2 | O-RING | 1 |
| 6 | XDA.008.0AG | DADO AUTOBLOCCANTE M8 ALTO PG ZINC. | HIGH BIG LEAD M8 SELFLOCKING | 2 |
| 7 | XRP.008.024 | RONDELLA PIANA F.LARGA D.8X24 ZINC. | WASHER D.8X24 | 3 |

X20.171.00C

| N° | Doc. Number | Titolo | Title | Q.tà |
|----|---------------|--|-------------------------|------|
| 1 | X20.068.000.Z | STAFFA FISSAGGIO SCORREVOLE PER BARRA | GALVANIZED PLATE | 1 |
| 2 | X20.069.000 | MANIGLIA DI BLOCCAGGIO M8 | M8 FIXING LEVER | 2 |
| 3 | X20.070.000 | DADO RETTANG.FILETTATO M 8 | SQUARE NUT M8 | 2 |
| 4 | X20.171.000.Z | STAFFA SCORREVOLE PER BARRA PNEUMATICA | SLIDING BRACKET | 1 |
| 5 | XD0.08.5588G | DADO M8 6S PG 5588 ZINC. | M8 6S BIG LEAD NUT 5588 | 1 |
| 6 | XRP.008.000 | RONDELLA PIANA D.8 6592 ZINC. | 8 D. FLAT WASHER | 1 |



X20.221.01CDX

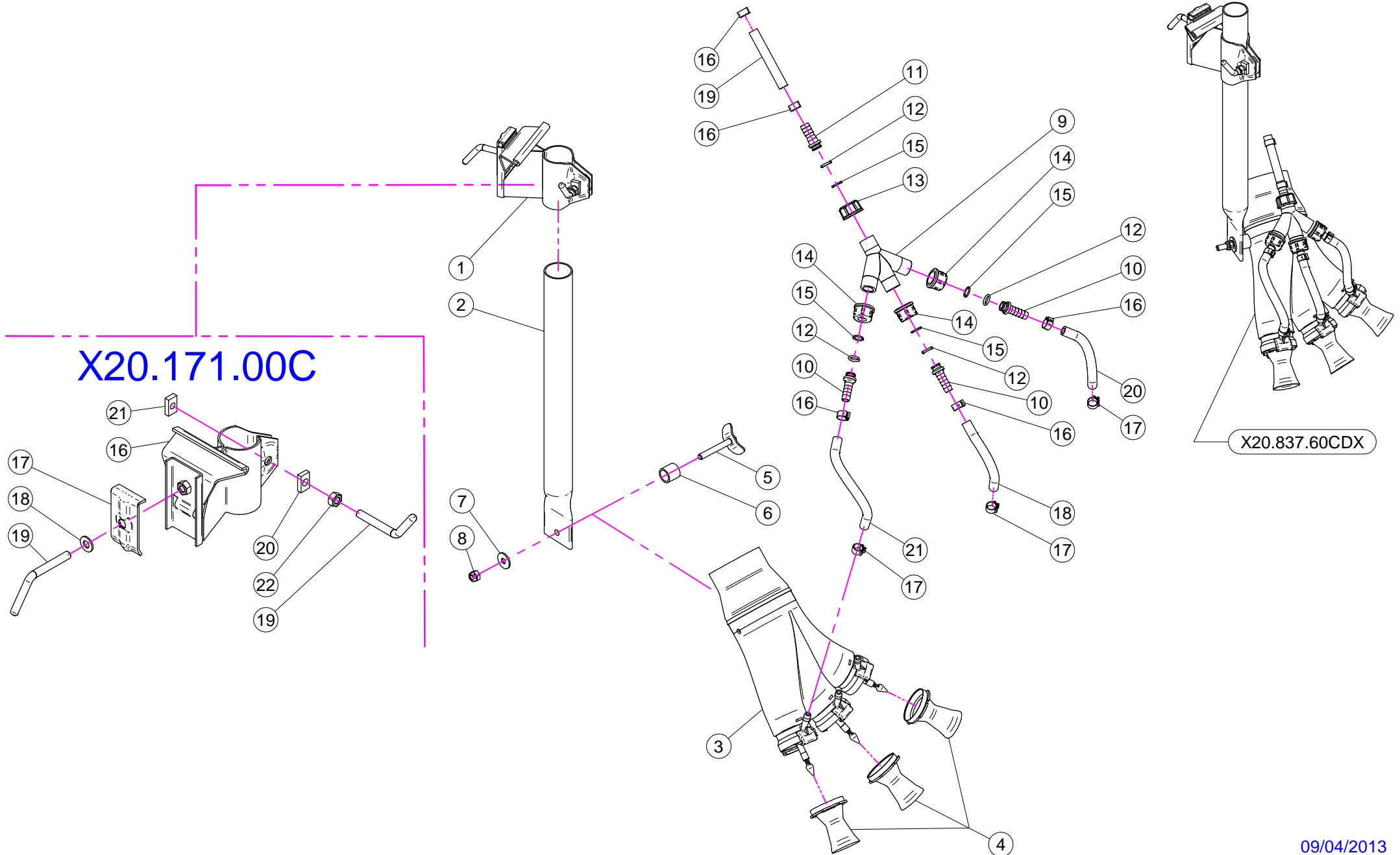


| N° | Doc. Number | Titolo | Title | Q.tà |
|----|---------------|---------------------------------------|----------------------|------|
| 1 | X00.003,5.50 | DIFFUSORE 3,5/50 | NOZZLE 3,5/50 | 2 |
| 2 | X02.077.010 | RACCORDO A Y D.8-8-8 | Y FITTING | 1 |
| 3 | X02.217.005 | TUBO Ø8x13 L=50 | HOSE Ø8x13 L=50 | 2 |
| 4 | X02.217.009 | TUBO Ø8x13 L=90 | HOSE Ø8x13 L=90 | 1 |
| 5 | X20.016.01C | RACCORDO ATTACCO RAPIDO PORTA TUBETTO | PIPE WITH OLIVE | 2 |
| 6 | X20.221.000DX | MANO 2 USCITE DX | RH 2 OUTLETS | 1 |
| 7 | X20.697.000 | FERMA DIFFUSORI | NOZZLE STOP | 2 |
| 8 | XFC.012,5.014 | FASCETTA COBRA SL030705 | KOBRA CLAMP SL030705 | 6 |

| N° | Doc. Number | Titolo | Title | Q.tà | Note |
|----|---------------|---------------------------------------|------------------------------------|------|------|
| 1 | X20.171.00C | STAFFA SCORR. PORTA DIFF. COMPLETO | SLIDING BRACKET AIR BOOM | 1 | |
| 2 | X20.266.001 | SUPPORTO FISSAGGIO VENTAGLIO | BRACKET | 1 | |
| 3 | X20.837.300SX | MANO COMPLETA (D.80) A 3 USCITE | D.80 COMPLETED POLY-HAND 3 OUTLETS | 1 | |
| 4 | X00.003.5.50 | DIFFUSORE 3,5/50 | NOZZLE 3,5/50 | 3 | |
| 5 | X21.059.000 | VITE DI FISSAGGIO MANO IN POLIETILENE | FIXING SCREW FOR POLY-HAND | 1 | |
| 6 | X20.265.000 | DISTANZIALE TUBO 1/2 " | SPACER | 1 | |
| 7 | XRP.008.024 | RONDELLA PIANA LARGA D.8X24 | WASHER D.8X24 | 1 | |
| 8 | XDA.008.0AG | DADO AUTOBLOCCANTE M8 | SELF LOCKING NUT M8 | 1 | |
| 9 | X02.346.000 | RACCORDO A 4 VIE | 4 WAYS UNION | 1 | |
| 10 | X02.285.000 | RACCORDO A P.G. D.11 | D.11 UNION | 3 | |
| 11 | X02.286.000 | RACCORDO A P.G. D.13 | D.13 R.H. UNION | 1 | |
| 12 | XOR.003.043 | OR D.10.78 X 2.62 | D.10.78 X 2.62 OR | 4 | |
| 13 | X02.288.000 | GIRELLO PER P.G. DRITTO D.13 | D.13 R.H. NUT | 1 | |
| 14 | X02.287.000 | GIRELLO 1/2" | FLY NUT 1/2" | 3 | |
| 15 | X07.602.000 | OR D.13,9 X 1,75 | D.13,9 X 1,75 O-RING GASKET | 4 | |
| 16 | XFC.013.5.015 | FASCETTA COBRA SLO30710 | KOBRA CLAMP | 5 | |
| 17 | XFC.012.5.014 | FASCETTA COBRA SLO30705 | KOBRA CLAMP | 3 | |
| 18 | X02.217.008 | TUBO D.8 x 13 L=80 | HOSE D.8 x 13 L=80 | 1 | |
| 19 | X02.217.009 | TUBO D.8 x 13 L=90 | HOSE D.8 x 13 L=90 | 1 | |
| 20 | X02.217.009 | TUBO D.8 x 13 L=90 | HOSE D.8 x 13 L=90 | 1 | |
| 21 | X02.217.009 | TUBO D.8 x 13 L=90 | HOSE D.8 x 13 L=90 | 1 | |

X20.171.00C

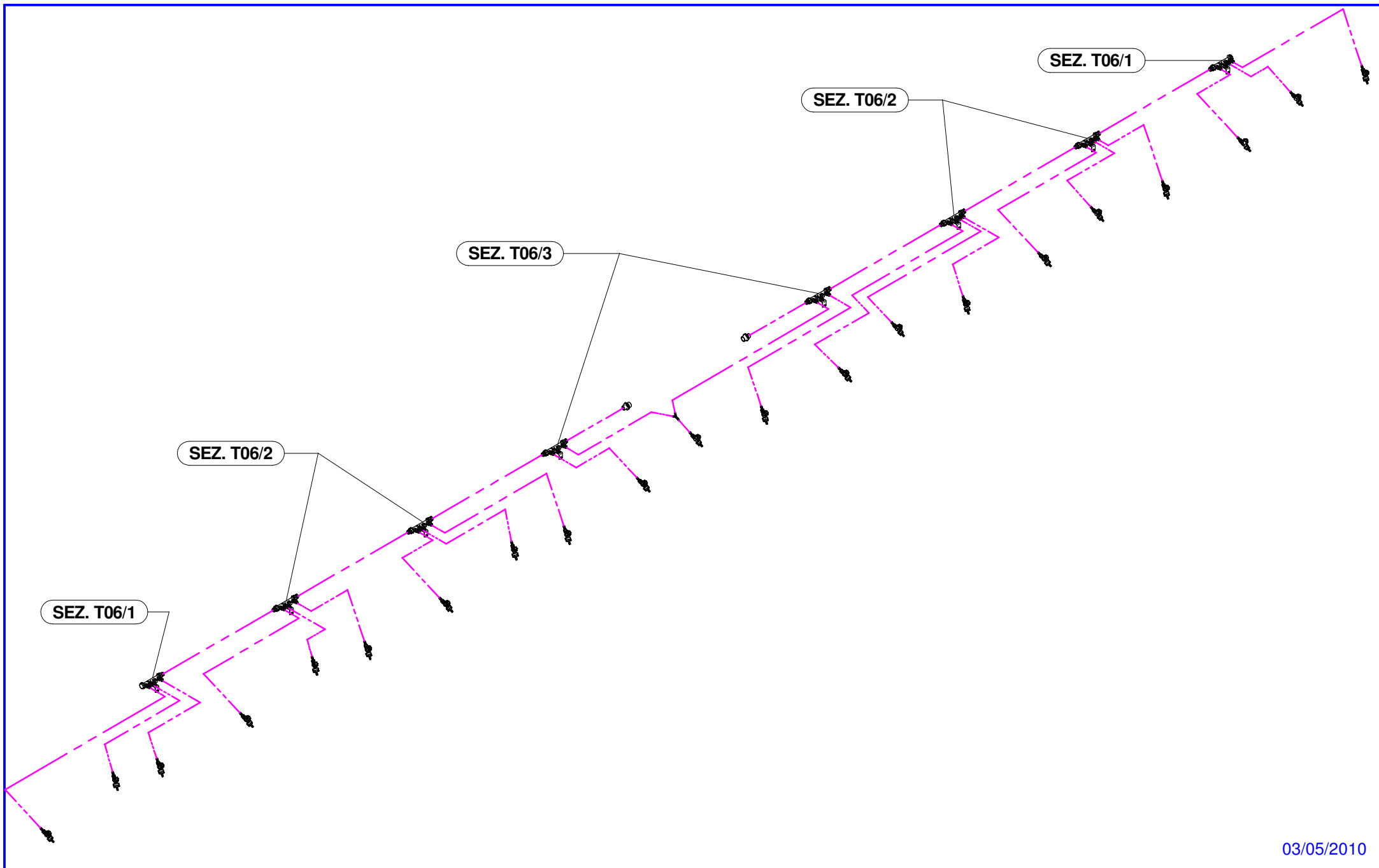
| N° | Doc. Number | Titolo | Title | Q.tà | Note |
|----|--------------|---------------------------------------|--------------------|------|------|
| 16 | X20.171.000 | STAFFA SCORREVOLE PORTA DIFFUSORI | SLIDING BRACKET | 1 | |
| 17 | X20.068.000 | STAFFA FISSAGGIO SCORREVOLE PER BARRA | BRACKET | 1 | |
| 18 | XRP.008.000 | RONDELLA PIANA D.8 | WASHER D.8 | 1 | |
| 19 | X20.069.000 | LEVA FISSAGGIO STAFFA | THRGEGED HANDLE M8 | 2 | |
| 20 | X20.071.000 | DADO RETTANGOLARE CON FORO PASSANTE | SQUARE NUT M8 | 1 | |
| 21 | X20.070.000 | DADO RETTANGOLARE M8 | SQUARE NUT M8 | 1 | |
| 22 | XD0.08.5588G | DADO M8 | NUT M8 | 1 | |

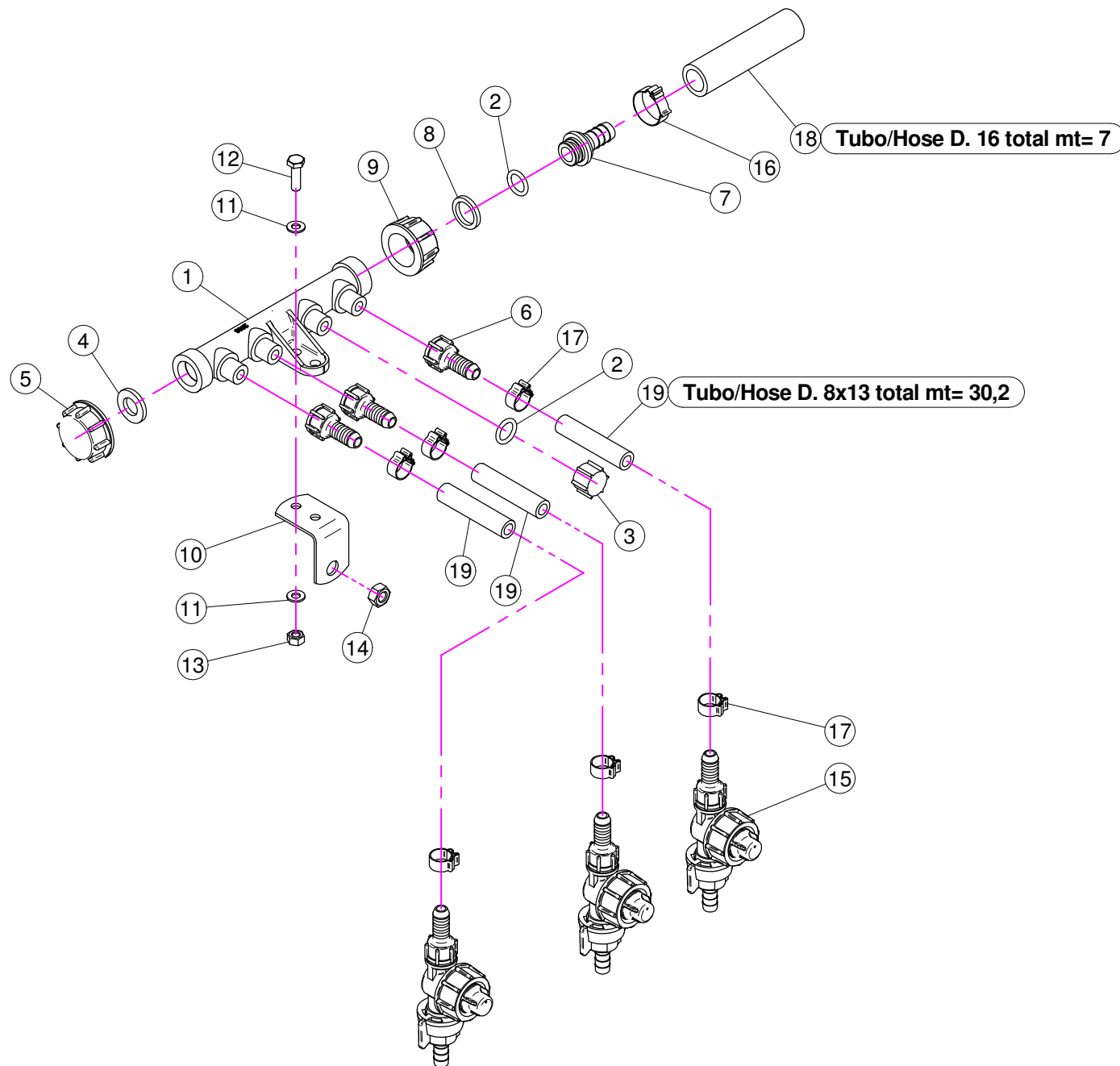


| N° | Doc. Number | Titolo | Title | Q.tà | Note |
|----|---------------|---------------------------------------|------------------------------------|------|------|
| 1 | X20.171.00C | STAFFA SCORR. PORTA DIFF. COMPLETO | SLIDING BRACKET AIR BOOM | 1 | |
| 2 | X20.266.001 | SUPPORTO FISSAGGIO VENTAGLIO | BRACKET | 1 | |
| 3 | X20.837.300DX | MANO COMPLETA (D.80) A 3 USCITE | D.80 COMPLETED POLY-HAND 3 OUTLETS | 1 | |
| 4 | X00.003,5,50 | DIFFUSORE 3,5/50 | NOZZLE 3,5/50 | 3 | |
| 5 | X21.059.000 | VITE DI FISSAGGIO MANO IN POLIETILENE | FIXING SCREW FOR POLY-HAND | 1 | |
| 6 | X20.265.000 | DISTANZIALE TUBO 1/2 " | SPACER | 1 | |
| 7 | XRP.008.024 | RONDELLA PIANA LARGA D.8X24 | WASHER D.8X24 | 1 | |
| 8 | XDA.008.0AG | DADO AUTOBLOCCANTE M8 | SELF LOCKING NUT M8 | 1 | |
| 9 | X02.346.000 | RACCORDO A 4 VIE | 4 WAYS UNION | 1 | |
| 10 | X02.285.000 | RACCORDO A P.G. D.11 | D.11 UNION | 3 | |
| 11 | X02.286.000 | RACCORDO A P.G. D.13 | D.13 R.H. UNION | 1 | |
| 12 | XOR.003.043 | OR D.10.78 X 2.62 | D.10.78 X 2.62 OR | 4 | |
| 13 | X02.288.000 | GIRELLO PER P.G. DRITTO D.13 | D.13 R.H. NUT | 1 | |
| 14 | X02.287.000 | GIRELLO 1/2" | FLY NUT 1/2" | 3 | |
| 15 | X07.602.000 | OR D.13,9 X 1,75 | D.13,9 X 1,75 O-RING GASKET | 4 | |
| 16 | XFC.013,5,015 | FASCETTA COBRA SLO30710 | KOBRA CLAMP | 5 | |
| 17 | XFC.012,5,014 | FASCETTA COBRA SLO30705 | KOBRA CLAMP | 3 | |
| 18 | X02.217.008 | TUBO D.8 x 13 L=80 | HOSE D.8 x 13 L=80 | 1 | |
| 19 | X02.217.009 | TUBO D.8 x 13 L=90 | HOSE D.8 x 13 L=90 | 1 | |
| 20 | X02.217.009 | TUBO D.8 x 13 L=90 | HOSE D.8 x 13 L=90 | 1 | |
| 21 | X02.217.009 | TUBO D.8 x 13 L=90 | HOSE D.8 x 13 L=90 | 1 | |

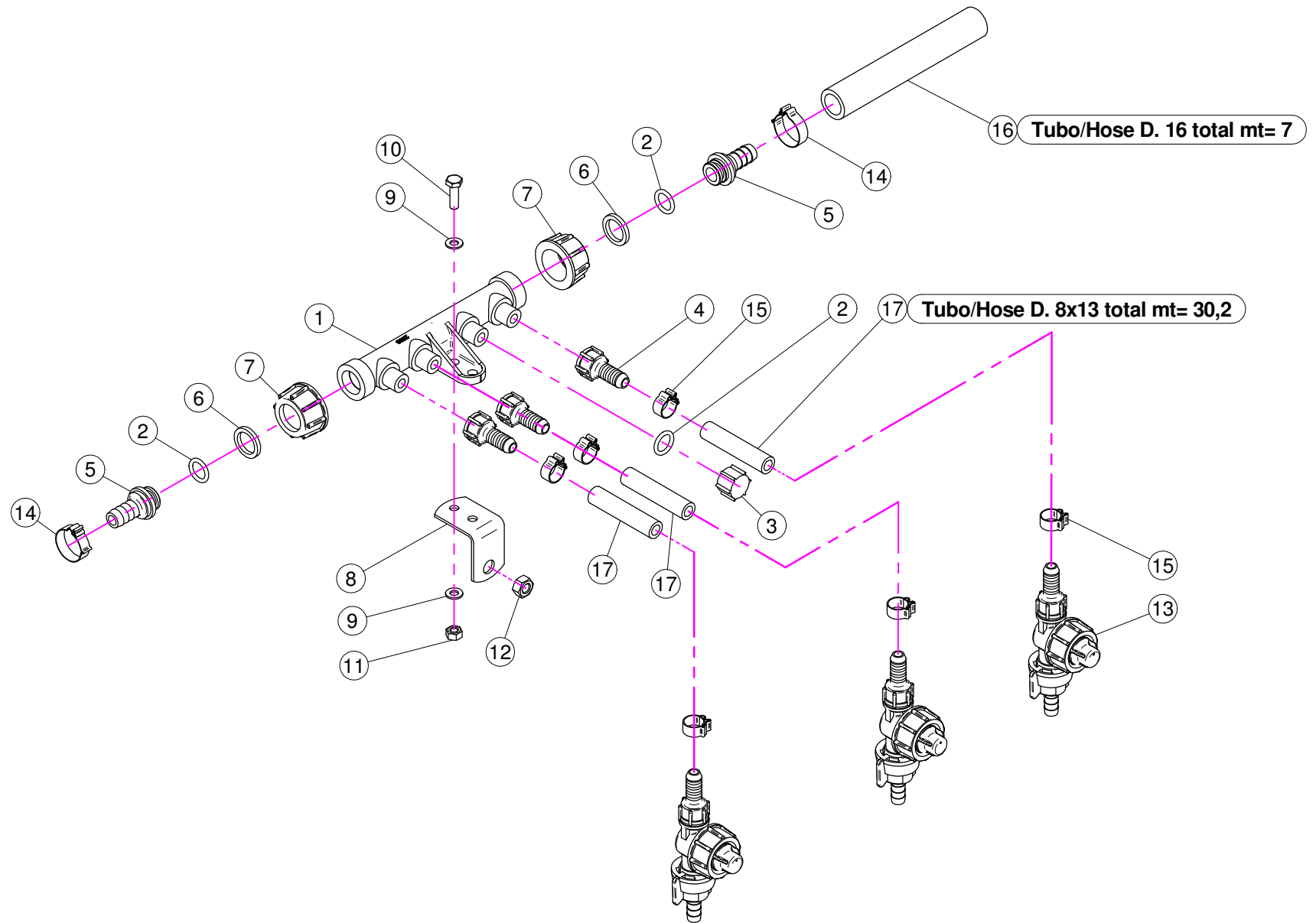
X20.171.00C

| N° | Doc. Number | Titolo | Title | Q.tà | Note |
|----|--------------|---------------------------------------|--------------------|------|------|
| 16 | X20.171.000 | STAFFA SCORREVOLE PORTA DIFFUSORI | SLIDING BRACKET | 1 | |
| 17 | X20.068.000 | STAFFA FISSAGGIO SCORREVOLE PER BARRA | BRACKET | 1 | |
| 18 | XRP.008.000 | RONDELLA PIANA D.8 | WASHER D.8 | 1 | |
| 19 | X20.069.000 | LEVA FISSAGGIO STAFFA | THRGEGED HANDLE M8 | 2 | |
| 20 | X20.071.000 | DADO RETTANGOLARE CON FORO PASSANTE | SQUARE NUT M8 | 1 | |
| 21 | X20.070.000 | DADO RETTANGOLARE M8 | SQUARE NUT M8 | 1 | |
| 22 | XD0.08.5588G | DADO M8 | NUT M8 | 1 | |

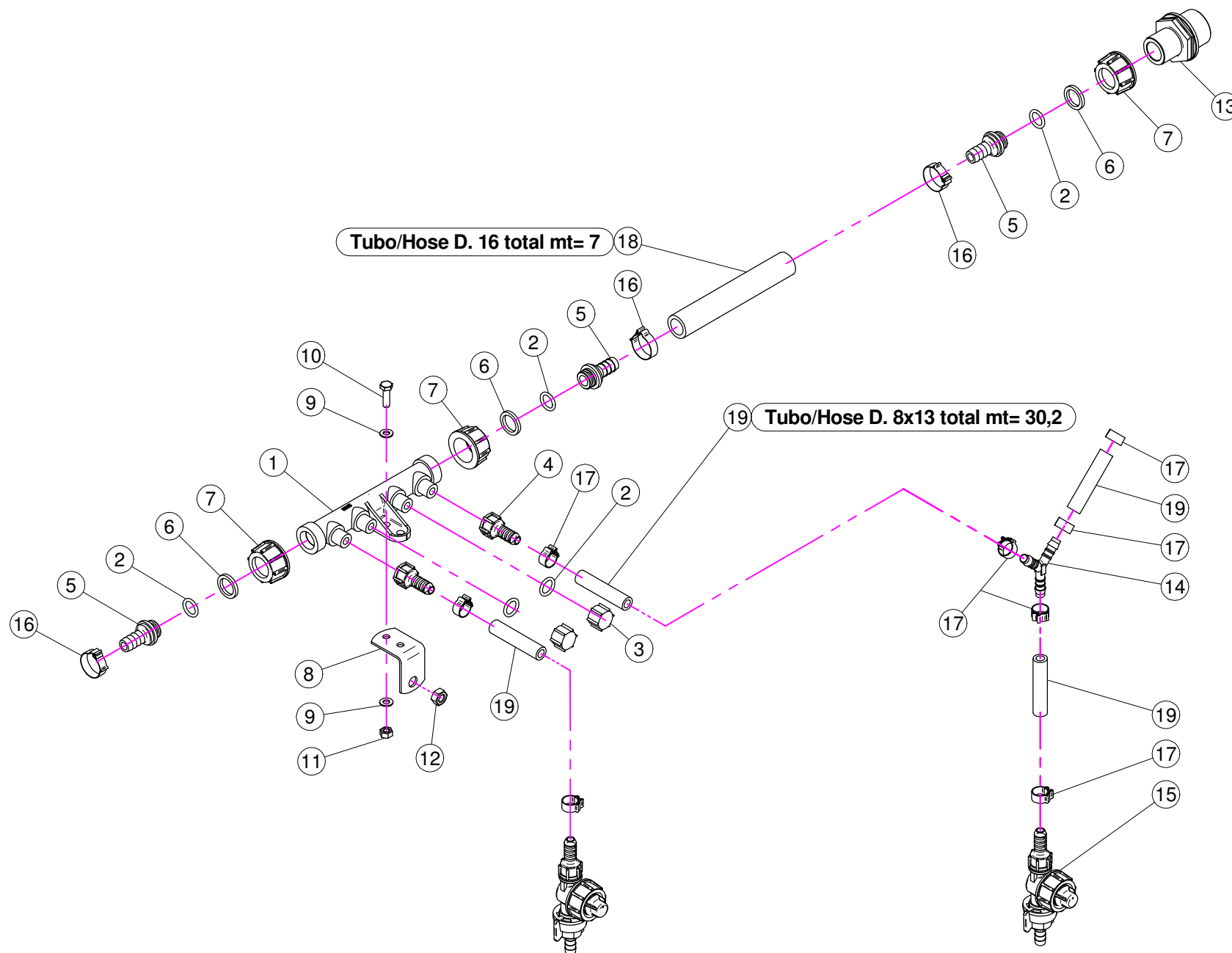




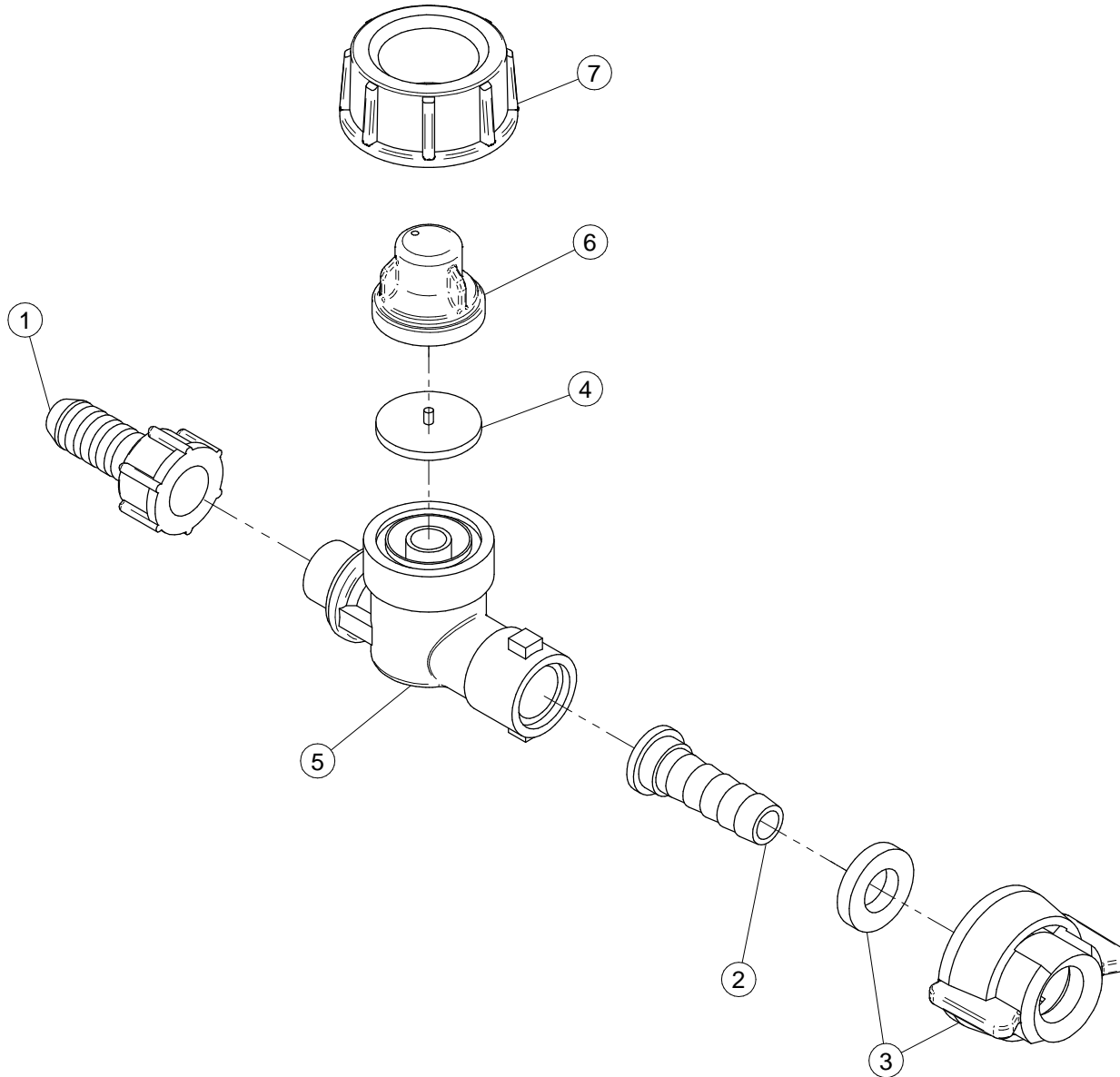
| N° | Doc. Number | Titolo | Title | Q.tà | Note |
|----|---------------|-----------------------------------|-------------------------------|------|------|
| 1 | X02.008.000 | DISTRIBUTORE LIQUIDO TESTATE | SPRAYHEADS LIQUID MANIFOLD | 1 | |
| 2 | XOR.000.117 | OR D. 13,1x18,34x2,62 | 13,1x18,34x2;62 O-RING GASKET | 2 | |
| 3 | X02.013.000 | TAPPO CIMA G 1/4" F. | PLUG G 1/4" | 1 | |
| 4 | X02.030.010 | GUARNIZIONE TAPPO DISTRIBUTORE | GASKET | 1 | |
| 5 | X02.182.000 | TAPPO 3/4" FEMMINA | FEMALE 3/4" CAP | 1 | |
| 6 | X02.007.011 | RACCORDO DIRITTO PG D.11 | STRAIGHT UNION R.H. D.11 | 3 | |
| 7 | X02.122.000 | RACCORDO A P.G. D.13 | D.13 UNION | 1 | |
| 8 | X02.349.000 | GUARNIZIONE PIANA D.17X23X3 | 17X23X3 FLAT GASKET | 1 | |
| 9 | X00.055.045 | GIRELLO 3/4" GAS | 3/4" FLY NUT | 1 | |
| 10 | X20.360.000 | Piattino Attacco Distributore | Bracket | 1 | |
| 11 | XRP.006.000 | RONDELLA PIANA D. 6 | WASHER D.6 | 4 | |
| 12 | XTE.006.020T | VITE TE M6 x 20 | SCREW TE M6 x 20 | 2 | |
| 13 | XD0.06.5588G | DADO M6 | NUT M6 | 2 | |
| 14 | XD0.08.5588G | DADO M8 6S PG | M8 6S BIG LEAD NUT 5588 | 1 | |
| 15 | X00.226.05C | GETTO ANTIGOCCIA DIRITTO COMPLETO | COMPLETE ANTIDROP | 3 | |
| 16 | XFC.022.5.024 | FASCETTA COBRA 22,5 - 24 | KOBRA CLAMP 22,5 - 24 | 1 | |
| 17 | XFC.014.5.016 | FASCETTA COBRA SLO30716 | KOBRA CLAMP | 6 | |
| 18 | X02.211.850 | TUBO D. 16 | HOSE D. 16 | 1 | |
| 19 | X02.217.140 | TUBO D. 8x13 | HOSE D. 8x13 | 3 | |



| N° | Doc. Number | Titolo | Title | Q.tà | Note |
|----|---------------|-----------------------------------|-------------------------------|------|------|
| 1 | X02.008.000 | DISTRIBUTORE LIQUIDO TESTATE | SPRAYHEADS LIQUID MANIFOLD | 1 | |
| 2 | XOR.000.117 | OR D. 13,1x18,34x2,62 | 13,1x18,34x2,62 O-RING GASKET | 3 | |
| 3 | X02.013.000 | TAPPO CIMA G 1/4" F. | PLUG G 1/4" | 1 | |
| 4 | X02.007.011 | RACCORDO DIRITTO PG D.11 | STRAIGHT UNION R.H. D.11 | 3 | |
| 5 | X02.122.000 | RACCORDO A P.G. D.13 | D.13 UNION | 2 | |
| 6 | X02.349.000 | GUARNIZIONE PIANA D.17X23X3 | 17X23X3 FLAT GASKET | 2 | |
| 7 | X00.055.045 | GIRELLO 3/4" GAS | 3/4" FLY NUT | 2 | |
| 8 | X20.360.000 | Piattino Attacco Distributore | Bracket | 1 | |
| 9 | XRP.006.000 | RONDELLA PIANA D. 6 | WASHER D.6 | 4 | |
| 10 | XTE.006.020T | VITE TE M6 x 20 | SCREW TE M6 x 20 | 2 | |
| 11 | XD0.06.5588G | DADO M6 | NUT M6 | 2 | |
| 12 | XD0.08.5588G | DADO M8 6S PG | M8 6S BIG LEAD NUT 5588 | 1 | |
| 13 | X00.226.05C | GETTO ANTIGOCCIA DIRITTO COMPLETO | COMPLETE ANTIDROP | 3 | |
| 14 | XFC.022,5.024 | FASCETTA COBRA 22,5 - 24 | KOBRA CLAMP 22,5 - 24 | 2 | |
| 15 | XFC.014,5.016 | FASCETTA COBRA SLO30716 | KOBRA CLAMP | 6 | |
| 16 | X02.211.180 | TUBO D. 16 | HOSE D. 16 | 1 | |
| 17 | X02.217.140 | TUBO D. 8x13 | HOSE D. 8x13 | 3 | |



| N° | Doc. Number | Titolo | Title | Q.tà | Note |
|----|---------------|-----------------------------------|-------------------------------|------|------|
| 1 | X02.008.000 | DISTRIBUTORE LIQUIDO TESTATE | SPRAYHEADS LIQUID MANIFOLD | 1 | |
| 2 | XOR.000.117 | OR D. 13,1x18,34x2,62 | 13,1x18,34x2;62 O-RING GASKET | 5 | |
| 3 | X02.013.000 | TAPPO CIMA G 1/4" F. | PLUG G 1/4" | 2 | |
| 4 | X02.007.011 | RACCORDO DIRITTO PG D.11 | STRAIGHT UNION R.H. D.11 | 2 | |
| 5 | X02.122.000 | RACCORDO A P.G. D.13 | D.13 UNION | 3 | |
| 6 | X02.349.000 | GUARNIZIONE PIANA D.17X23X3 | 17X23X3 FLAT GASKET | 3 | |
| 7 | X00.055.045 | GIRELLO 3/4" GAS | 3/4" FLY NUT | 3 | |
| 8 | X20.360.000 | Piattino Attacco Distributore | Bracket | 1 | |
| 9 | XRP.006.000 | RONDELLA PIANA D. 6 | WASHER D.6 | 4 | |
| 10 | XTE.006.020T | VITE TE M6 x 20 | SCREW TE M6 x 20 | 2 | |
| 11 | XD0.06.5588G | DADO M6 | NUT M6 | 2 | |
| 12 | XD0.08.5588G | DADO M8 6S PG | M8 6S BIG LEAD NUT 5588 | 1 | |
| 13 | X02.293.000 | RIDUZIONE 1" M - 3/4" M | 1" M - 3/4" M REDUCER NIPPLE | 1 | |
| 14 | X02.077.010 | RACCORDO A Y D.8-8-8 | Y FITTING | 1 | |
| 15 | X00.226.05C | GETTO ANTIGOCCIA DIRITTO COMPLETO | COMPLETE ANTIDROP | 2 | |
| 16 | XFC.022.5.024 | FASCETTA COBRA 22,5 - 24 | KOBRA CLAMP 22,5 - 24 | 3 | |
| 17 | XFC.014.5.016 | FASCETTA COBRA SLO30716 | KOBRA CLAMP | 8 | |
| 18 | X02.211.180 | TUBO D. 16 | HOSE D. 16 | 1 | |
| 19 | X02.217.140 | TUBO D. 8x13 | HOSE D. 8x13 | 5 | |



| N° | Doc. Number | Titolo | Title | Q.tà |
|----|---------------|---------------------------|--------------------------|------|
| 1 | X02.007.011 | RACCORDO DIRITTO PG Ø 11 | STRAIGHT UNION R.H. Ø 11 | 1 |
| 2 | X02.379.020 | RACCORDO P.G. 10 SPIANATO | STRAIGHT UNION R.H. 10 | 1 |
| 3 | X00.226.042 | GIRELLO + GUARNIZIONI | FLY NUT + GASKET | 1 |
| 4 | X00.226.041.B | GUARNIZIONE | GASKET | 1 |
| 5 | X00.226.041.A | CORPO ANTIGOCCIA | ANTIDROP BODY | 1 |
| 6 | X00.226.041.C | GUARNIZIONE ANTIGOCCIA | GASKET | 1 |
| 7 | X00.226.045 | GIRELLO 3/4" GAS | 3/4" FLY NUT | 1 |